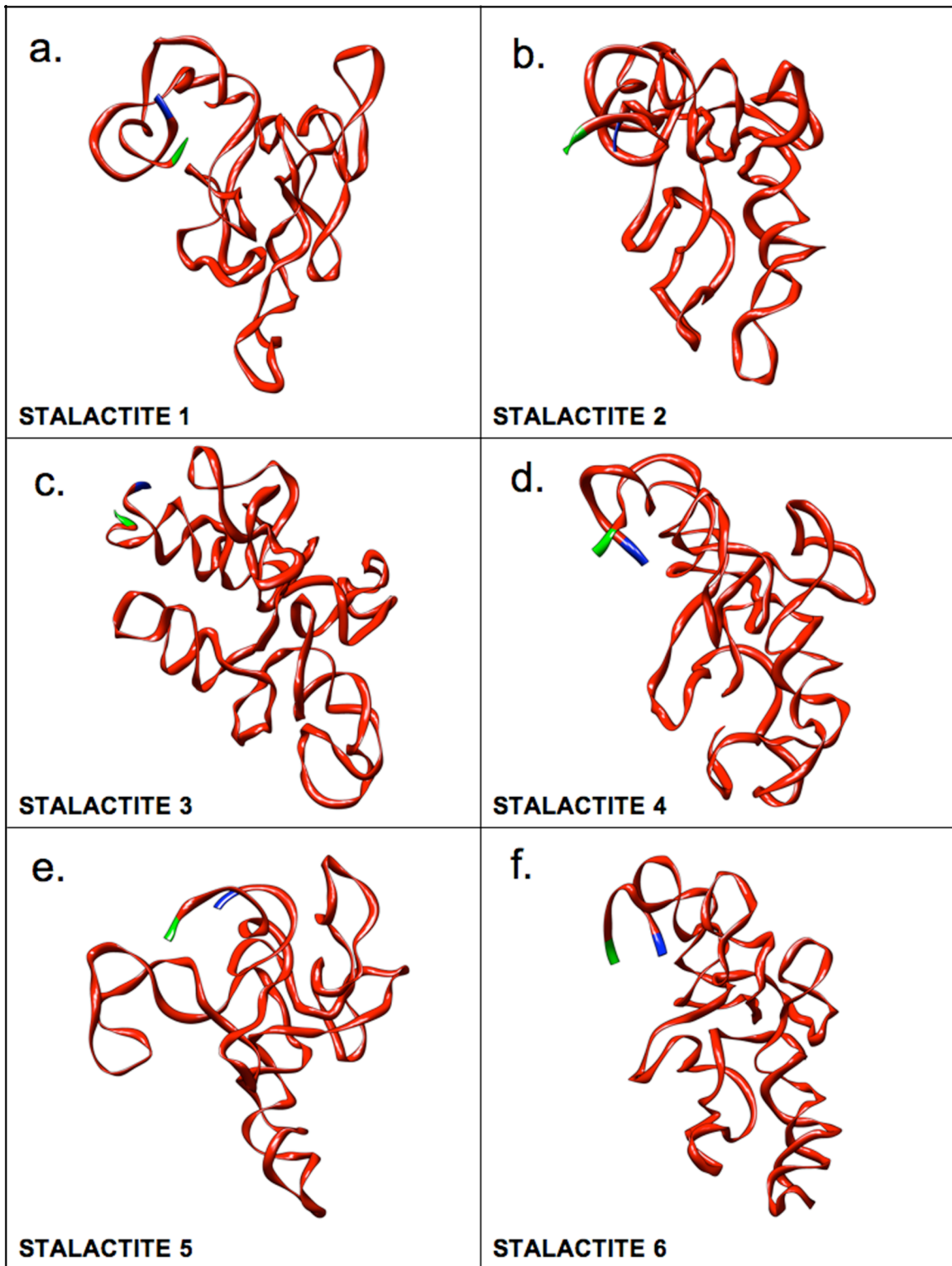
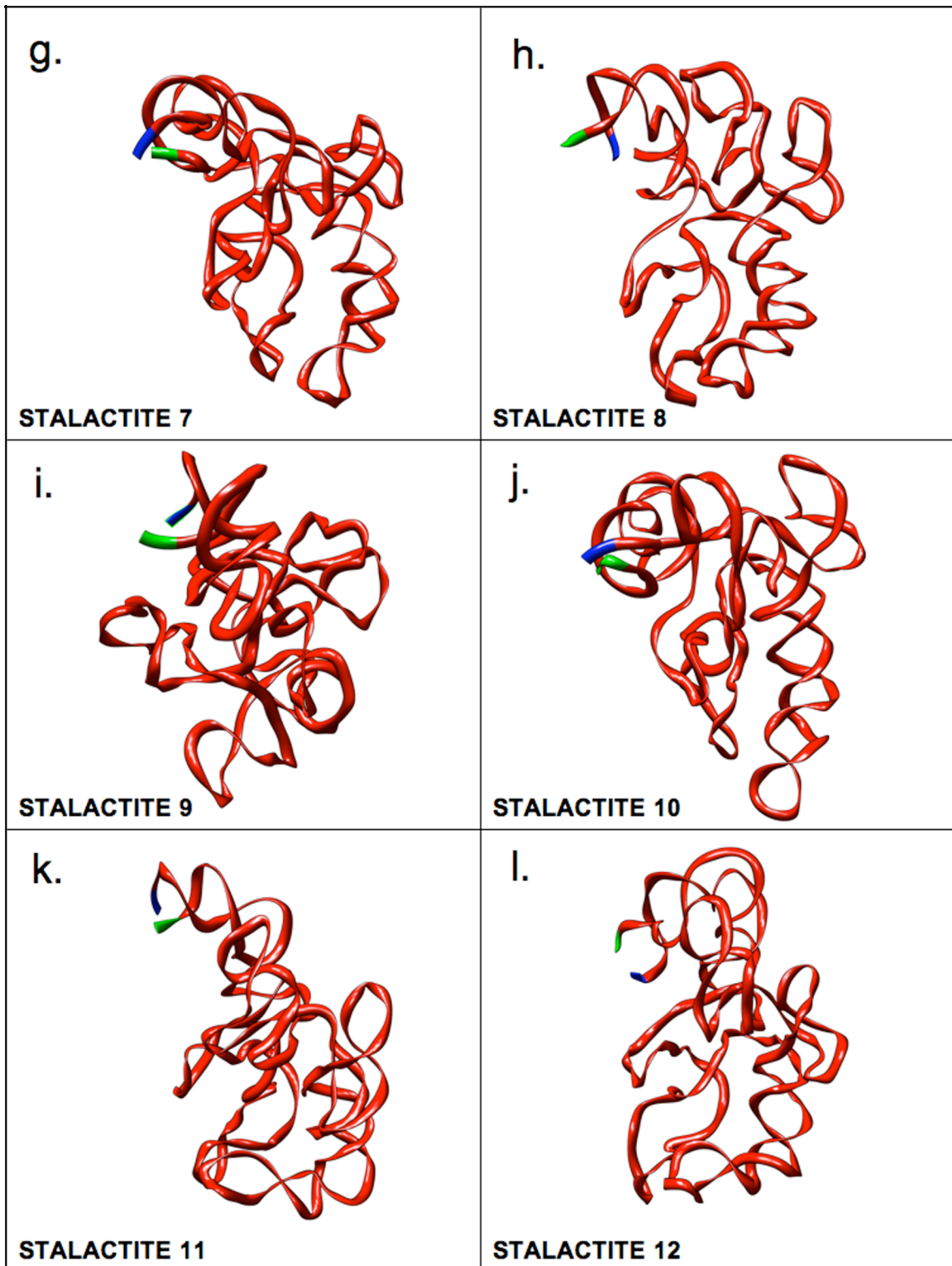


Supplementary Figure 1. Conformations of different stalactites in the final model. The 5'- and 3'-termini of the RNA are labeled in blue and green, respectively.

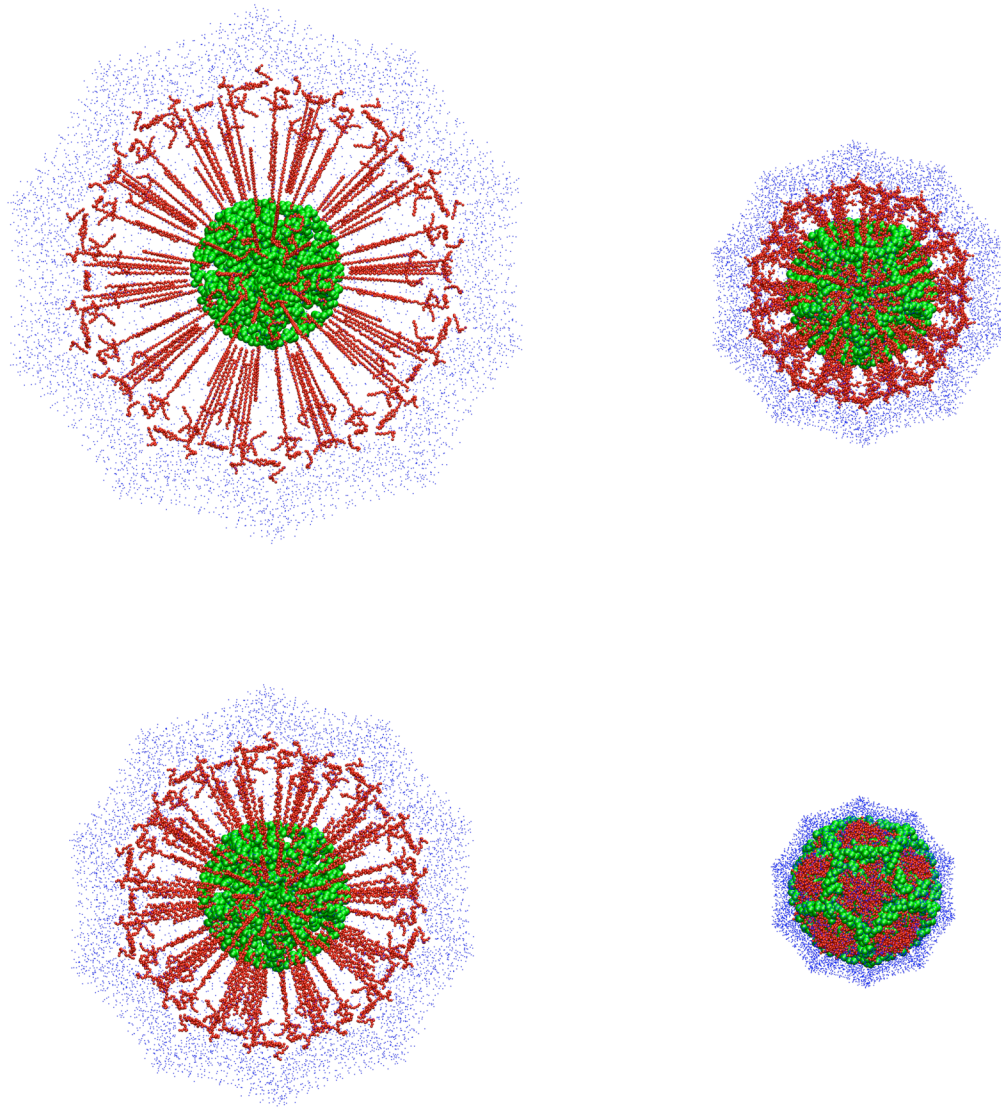
Supplementary Figure 2. Protocol for adding protein tails and optimizing the final structure. The RNA genome (green) is restrained to the conformation shown in Figure 2d. The amino- and carboxy-terminal protein tails (red) are added to the model of the capsid and pulled toward the center of the genome as the capsid is scaled downward in size, with each scaling step followed by extensive energy minimization. **a.** Initial model, with the capsid protein coordinates scaled by a factor of three. **b** and **c.** Intermediate stage of refinement. **d.** Final model.



Supplementary Figure 1a



Supplementary Figure 1b



Supplementary Figure 2