

Legends to Supplementary Figures:

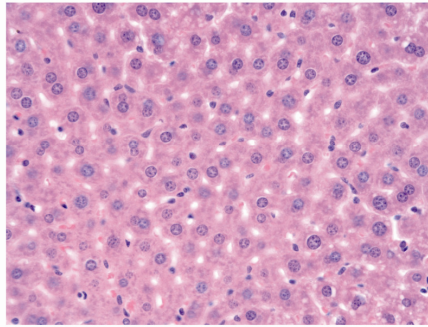
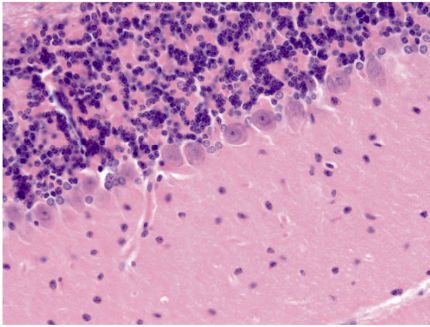
Supplementary Figure 1: Histopathology of NPC1 single null and NPC1/tau double null mutant mice. Purkinje cell loss in cerebellar folia and accumulation of lipid-laden macrophages in liver of 10-week-old NPC1 single null and NPC1/tau double null mutant mice. (H&E stain, original magnification 200 x.)

Supplementary Figure 2: Cerebellar pathology in NPC1 single null and NPC1/tau double null mutant mice. Immunohistochemical stain for phosphorylated neurofilament protein (SMI-31) highlights swollen axons in cerebellar white matter of mutant mice. Astrogliosis (GFAP) and microgliosis (Iba1) are visualized in cerebellum of 10-week-old mutants. (Original magnification 200 X, except neurofilament stain at 4 weeks, which is shown at 400 x.)

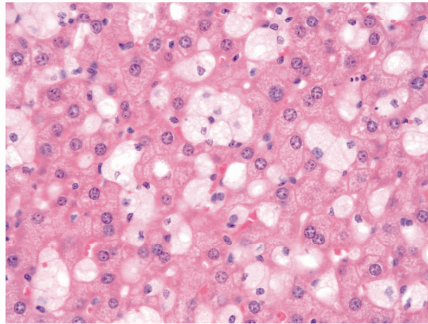
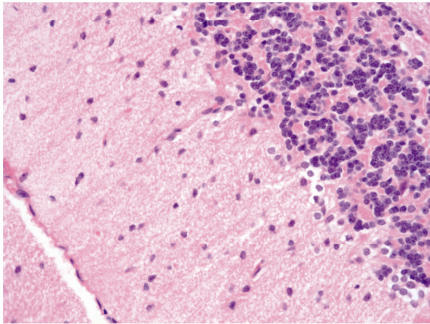
Supplementary Figure 3: LC3-positive swollen axons in cerebellar white matter of NPC1 single null and NPC1/tau double null mutant mice. Arrows indicate LC3 immunoreactive swollen axons in cerebellar white matter of mutant mice. (Original magnification 1000 x.)

Cerebellum

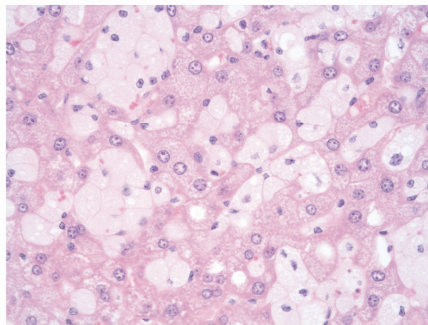
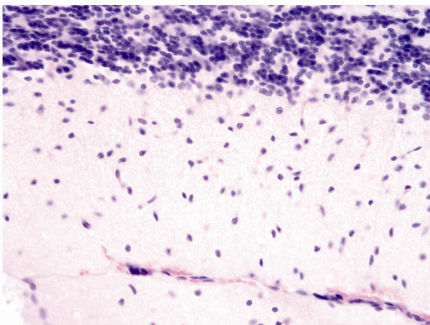
Liver



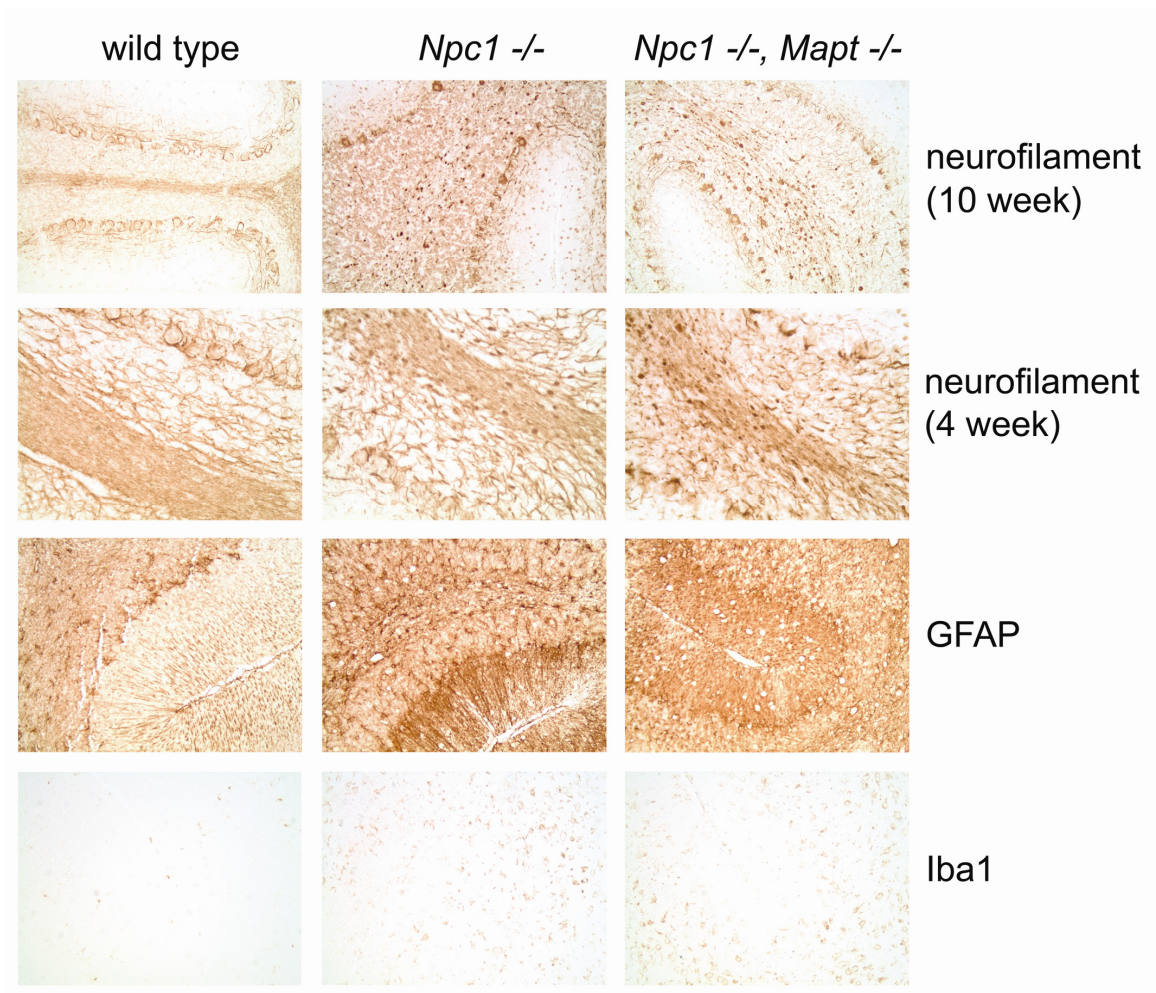
wild type



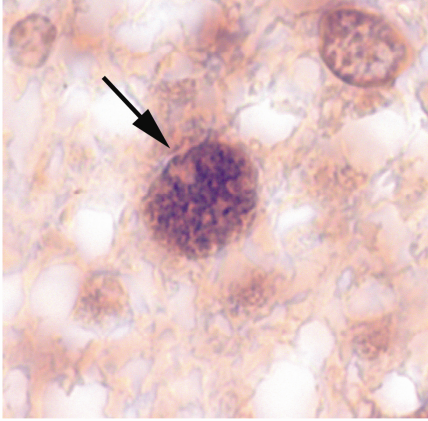
Npc1 -/-



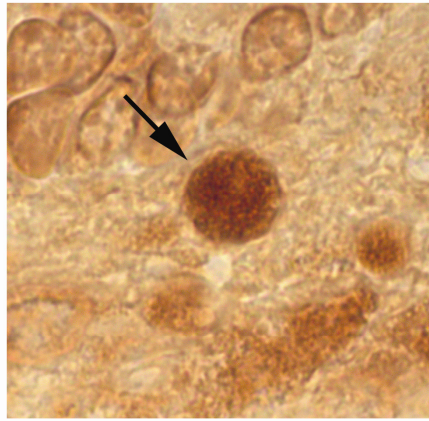
Npc1 -/-,
Mapt -/-



Npc1 *-/-*



Npc1 *-/-*
Mapt *-/-*



LC3