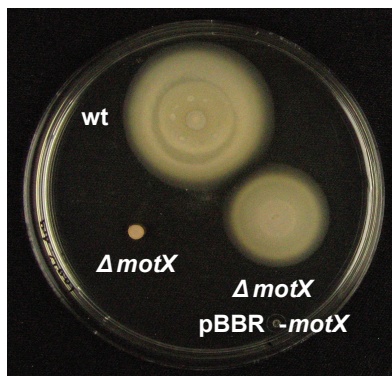
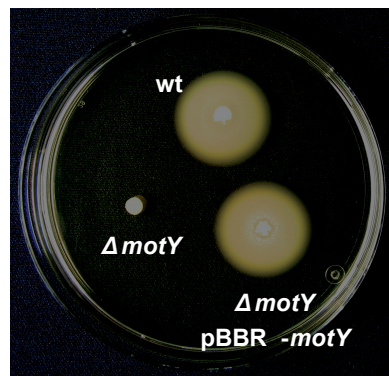


A



B



**Supplemental Figure 1:** Deletion and complementation of *motX* and *motY*. Upper panels: Southern analysis of *motX* and *motY* deletion strains. Chromosomal DNA prepared from the wild type and the deletion strains was digested with BglIII (*motX*) or HindIII (*motY*). Subsequent to agarose gel separation and membrane transfer, DIG-labeled internal fragments of *motX* and *motY* were used as probe. Displayed are images of the gel separation (left), the membrane after signal detection (middle), and the corresponding overlay (right). The detected signals correspond well to the estimated sizes of 2.1 kbp for *motX* and 4.8 kbp for *motY*. The analysis revealed the complete deletion of *motX*, *motY*, or both in the corresponding mutant strains. Lower panel: Complementation of *motX* (A) and *motY* (B) deletions. Wild type, mutant, and the mutant complemented by plasmid borne ectopic expression of the corresponding gene (pBBR-*motX* and pBBR-*motY*, respectively) were spotted on the same semi-solid agar plate and incubated over night.