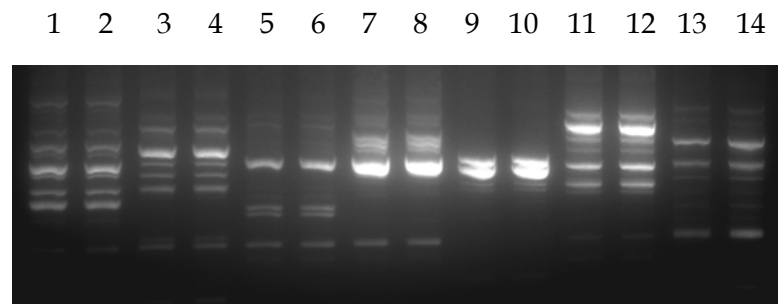


Supplement Figure 1



RAPD profiles of the closely related paired subclones isolated from seven patients in our study, which express CagA with different EPIYA motif combinations, namely *Hp77*:AB-ABC (lanes 1, 2), *Hp147631*:ABC-ABCC (lanes 3, 4), *Hp150934*:ABC-ABCC (lanes 5, 6), *Hp66*:ABC-ABCC (lanes 7, 8), *Hp70*:ABC-ABCC (lanes 9, 10), *Hp71*:ABC-ABCC (lanes 11, 12), *Hp146195*:ABC-ABCC (lanes 13, 14). Primer D11344 was used in the particular RAPD profile as described before (34).