

## Supplementary Information

Supplementary Figure 1 TORC1 regulates Maf1 phosphorylation but not Maf1

nucleocytoplasmic transport in W303a cells

(A) Maf1 phosphorylation requires TORC1 nuclear localization and chromatin-association in W303a cells. Exponentially growing W303a cells expressing Tor1-RR variants were treated without or with 100 nM rapamycin for 30 min. Maf1-Myc9 phosphorylation was determined by electrophoretic mobility by Western blot with a Myc-specific antibody.

(B) Maf1 is predominantly localized in the nucleus of W303a cells during normal growth. Yeast cells were treated as indicated in Supplementary figure 1A and Maf1-Myc9 localization was determined by indirect immunofluorescence (IF) with a Myc-specific antibody. The nucleus was stained by DAPI.

Supplementary Figure 2 Maf1 cytoplasmic localization defect in W303a cells is partially rescued by expression of wild type Ssd1 from FM391

(A) Expression of wild type Ssd1 from FM391 rescues the rapamycin-hypersensitivity of W303a tor1 $\Delta$  strain. W303a wild type or W303a tor1 $\Delta$  cells carrying vector only or a SSD1 gene amplified from FM391 genome were tested for rapamycin sensitivity by 10-fold serial dilution spot assay.

(B) FM391 cells, and W303a cells carrying vector only or expressing Ssd1 from FM391 were analyzed for Maf1-Myc9 localization by IF with a Myc-specific antibody.

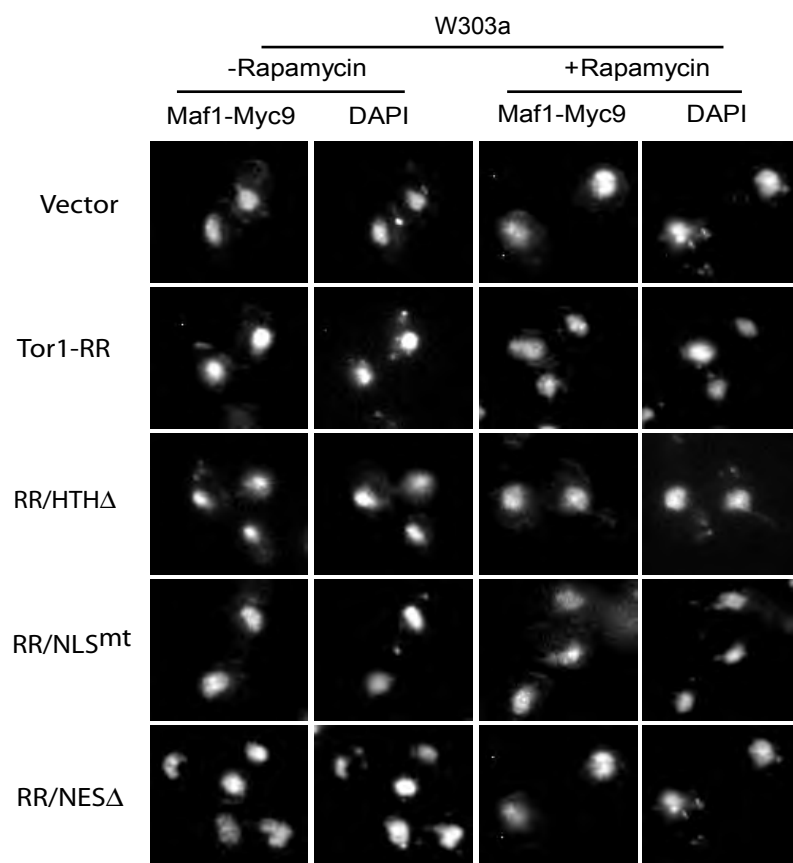
Supplementary Figure 3 Color images for Figure 4

(A) Rpc82 is localized in both nucleus and nucleolus, which is not affected by rapamycin treatment. Exponentially growing W303a cells expressing Rpc82-Myc9 were treated without or with 100 nM rapamycin for 30 min. Rpc82-Myc9 localization (Green) was determined by IF with a Myc-specific antibody. The nucleolus was stained with a Nop1 antibody (red) and the nucleus was stained by DAPI (blue).

(B) Maf1 is normally absent from the nucleolus and rapamycin causes Maf1 nucleolar localization. Exponentially growing W303a cells expressing Maf1-Myc9 were treated without or with 100 nM rapamycin for 30 min. Maf1-Myc9 localization (Green) was determined by IF with a Myc-specific antibody. The nucleolus was stained with a Nop1 antibody (red) and the nucleus was stained by DAPI (blue).

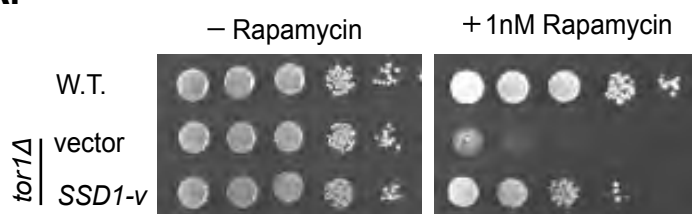
(C) Shown are enlarged images of representative cells from Figure 4B.

Supplementary Figure 1

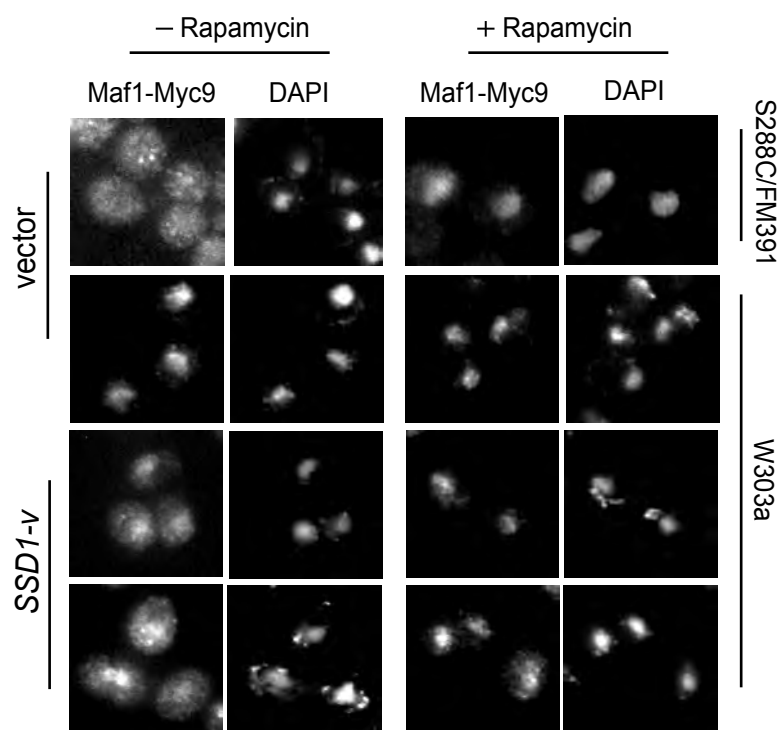


Supplementary Figure 2

**A.**



**B.**



Supplementary Figure 3

