

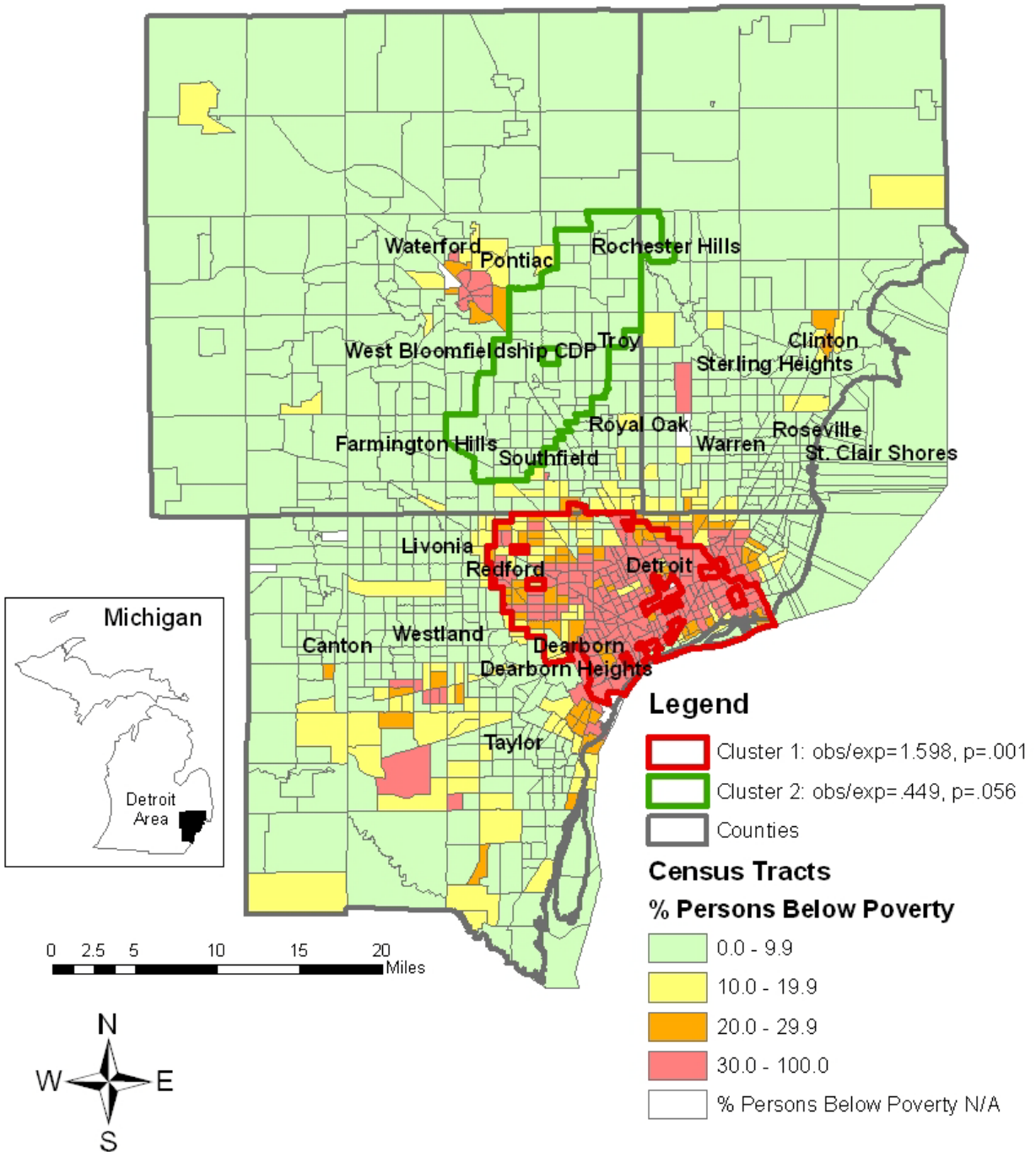
Web Table 1. Summary of Cluster Analysis of Breast Cancer Survival Among Women With Breast Cancer Aged 66 Years or Older Diagnosed in 1992–1999 in 5 SEER Registries

Metropolitan Area	Zone	No. of Observed Cases	No. of Expected Cases	Observed/ Expected^a	No. of Census Tracts	P Value
Detroit	1 ^b	223	139.6	1.60	261	0.001
Detroit	2	30	66.9	0.45	61	0.056
Atlanta	1 ^b	104	57.5	1.81	95	0.001
Atlanta	2	110	152.1	0.72	135	0.026
Seattle-Puget Sound	1 ^b	14	2.8	4.94	9	0.118
San Francisco/Oakland	1 ^b	0	7.7	0.00	9	0.805
Connecticut	1 ^b	0	8.7	0.00	8	0.605

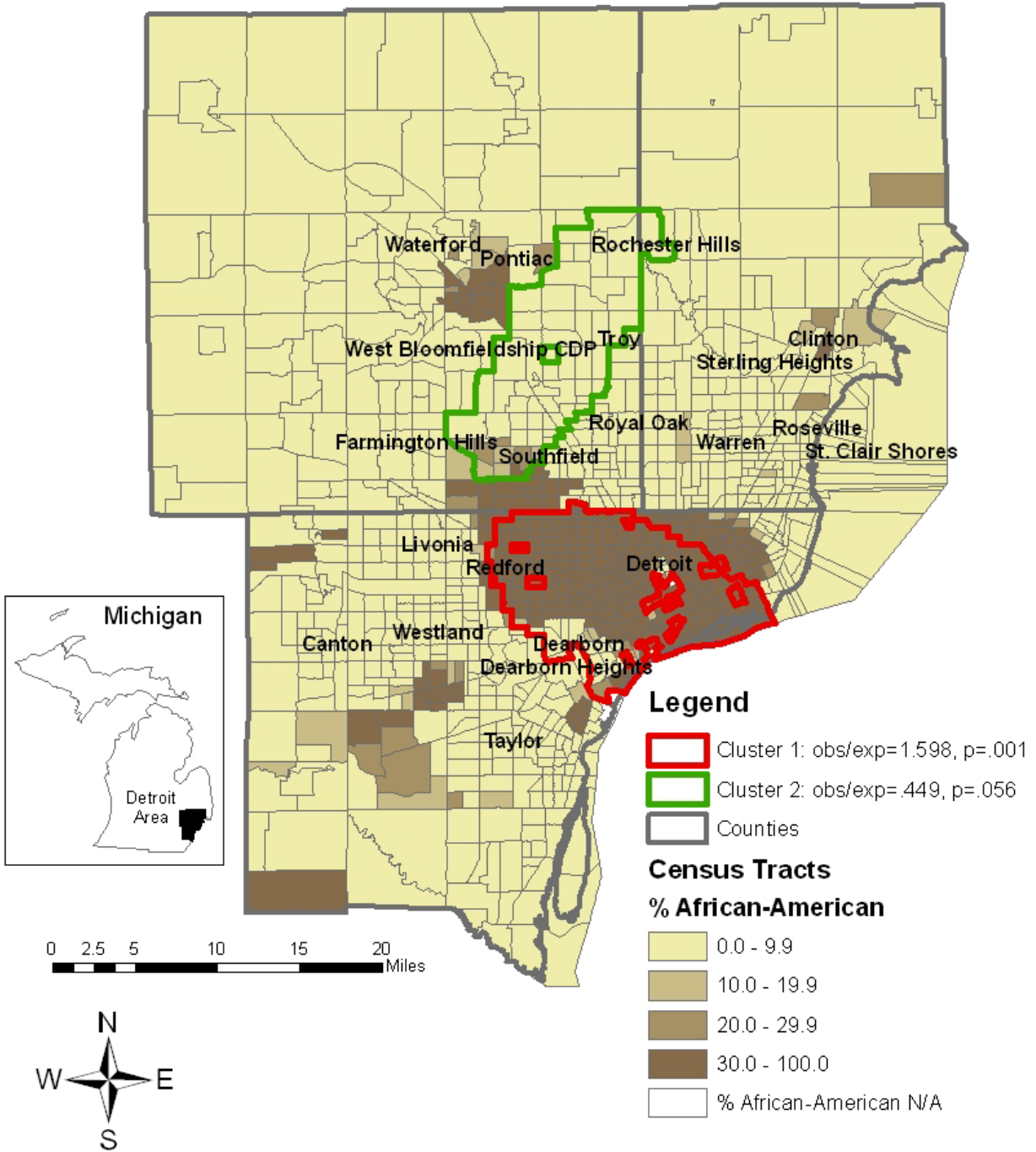
^a Observed/Expected greater than one denotes increased risk of shorter-than-expected survival.

^b Most likely cluster based on Satscan results.

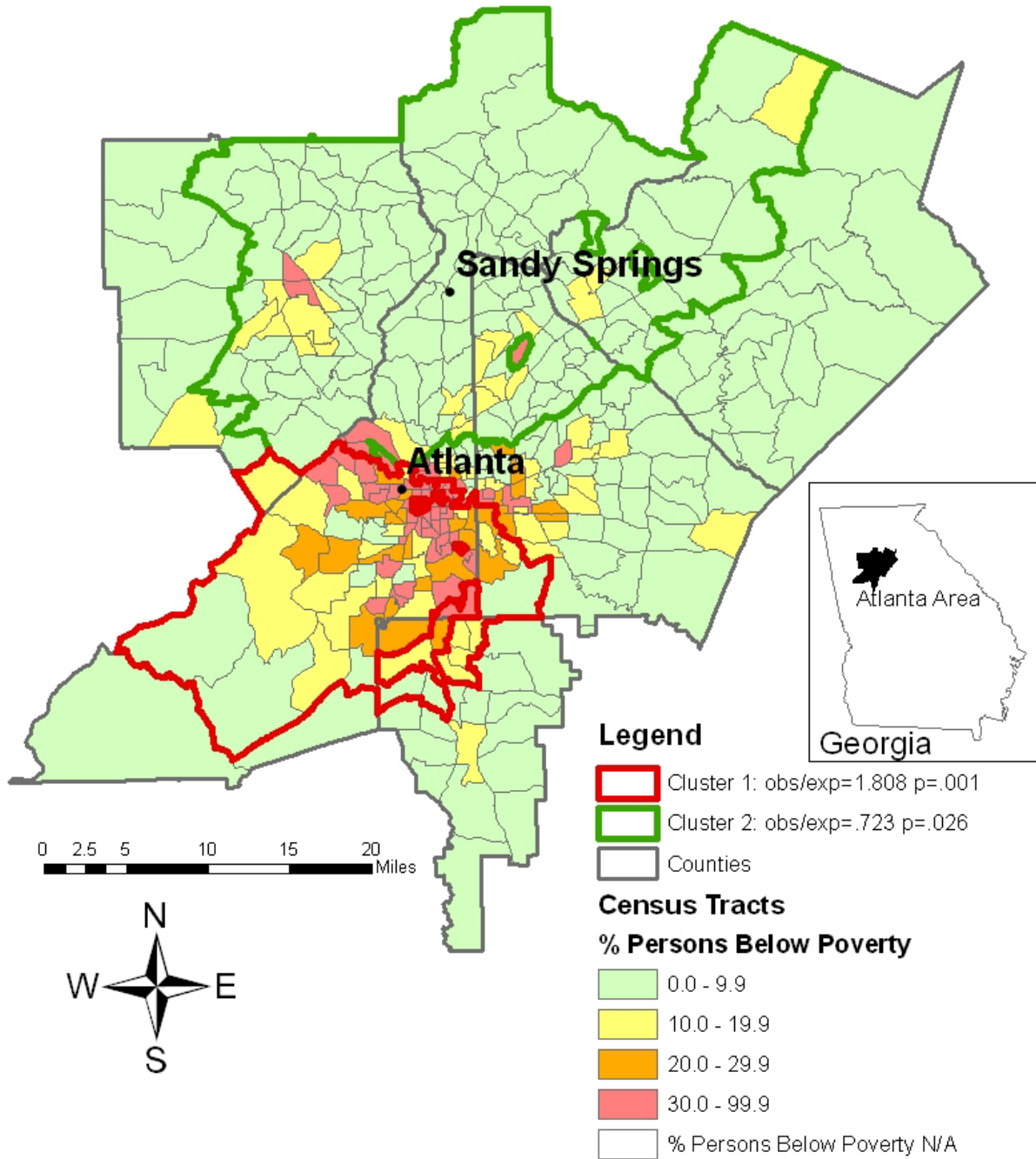
Web Figure 1. Breast cancer cluster of shorter-than-expected survival (cluster 1), longer-than-expected survival (cluster 2), and outside cluster areas with census-tract poverty rate for women with breast cancer age 66 or older diagnosed in 1992-1999, Detroit, MI.



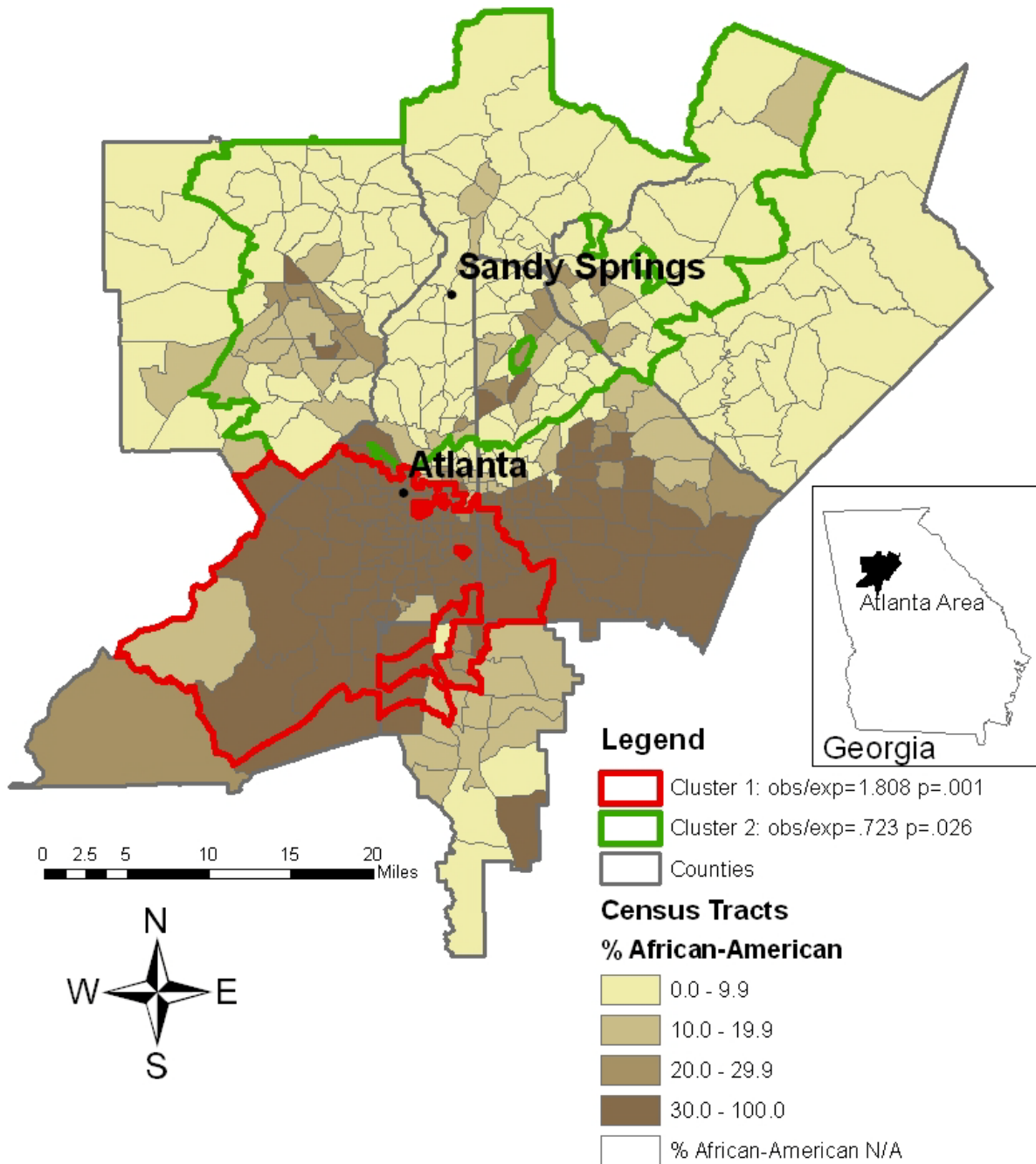
Web Figure 2. Breast cancer cluster of shorter-than-expected survival (cluster 1), longer-than-expected survival (cluster 2), and outside cluster areas with census-tract African Americans for women with breast cancer age 66 or older diagnosed in 1992-1999, Detroit, MI.



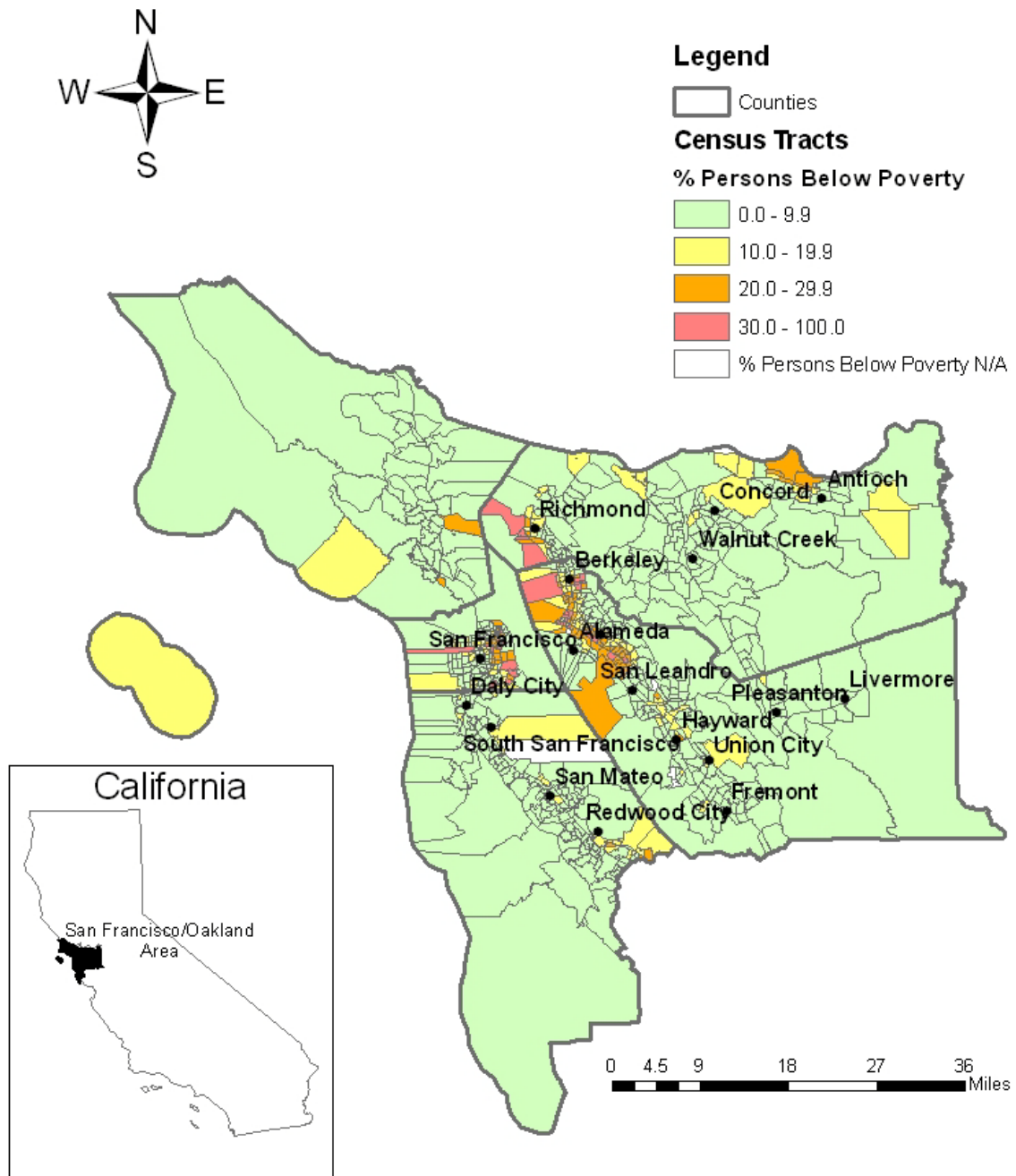
Web Figure 3. Breast cancer cluster of shorter-than-expected survival (cluster 1), longer-than-expected survival (cluster 2), and outside cluster areas with census-tract poverty rate for women with breast cancer age 66 or older diagnosed in 1992-1999, Atlanta, GA.



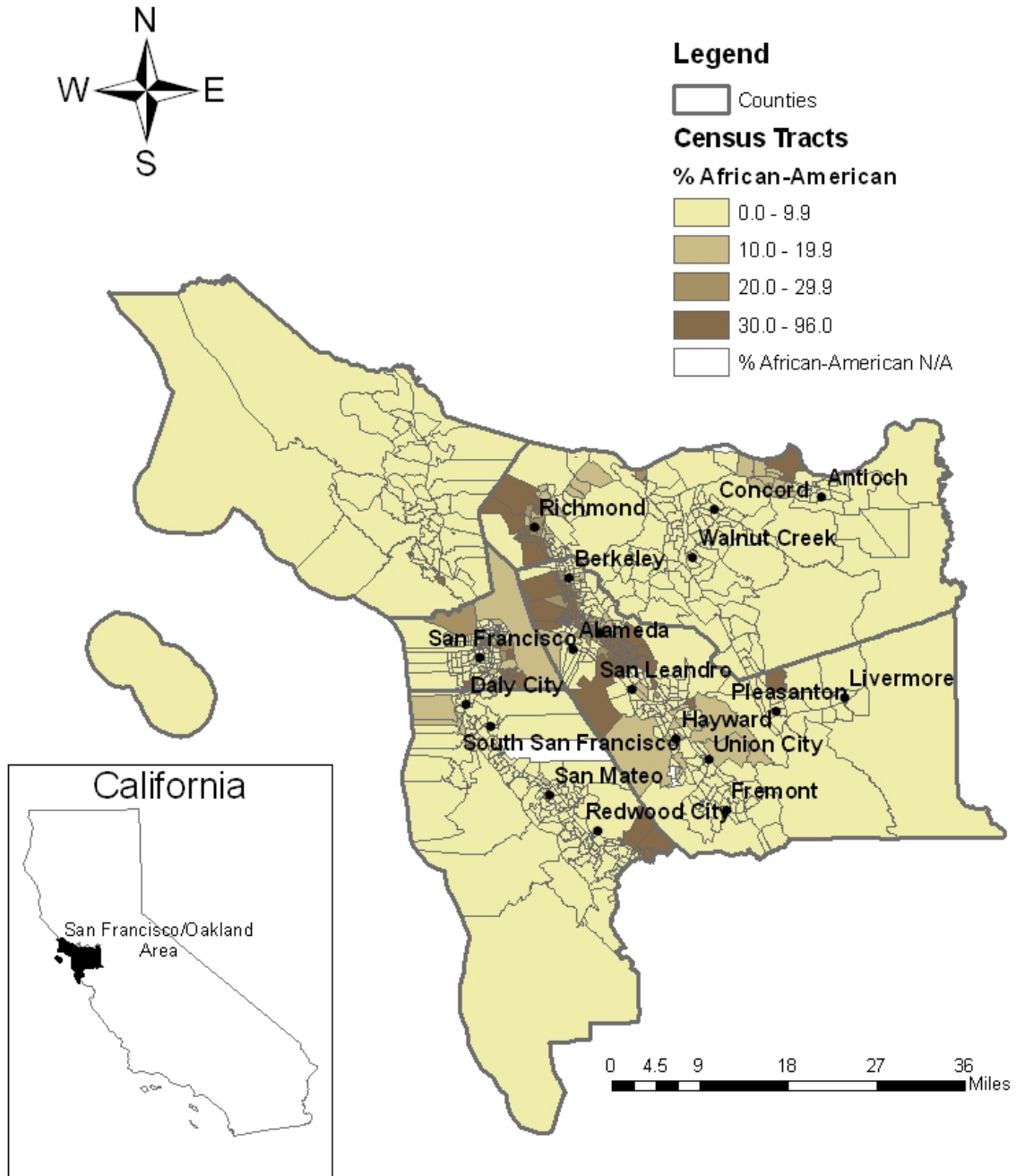
Web Figure 4. Breast cancer cluster of shorter-than-expected survival (cluster 1), longer-than-expected survival (cluster 2), and outside cluster areas with census-tract percent African American for women with breast cancer age 66 or older diagnosed in 1992-1999, Atlanta, GA



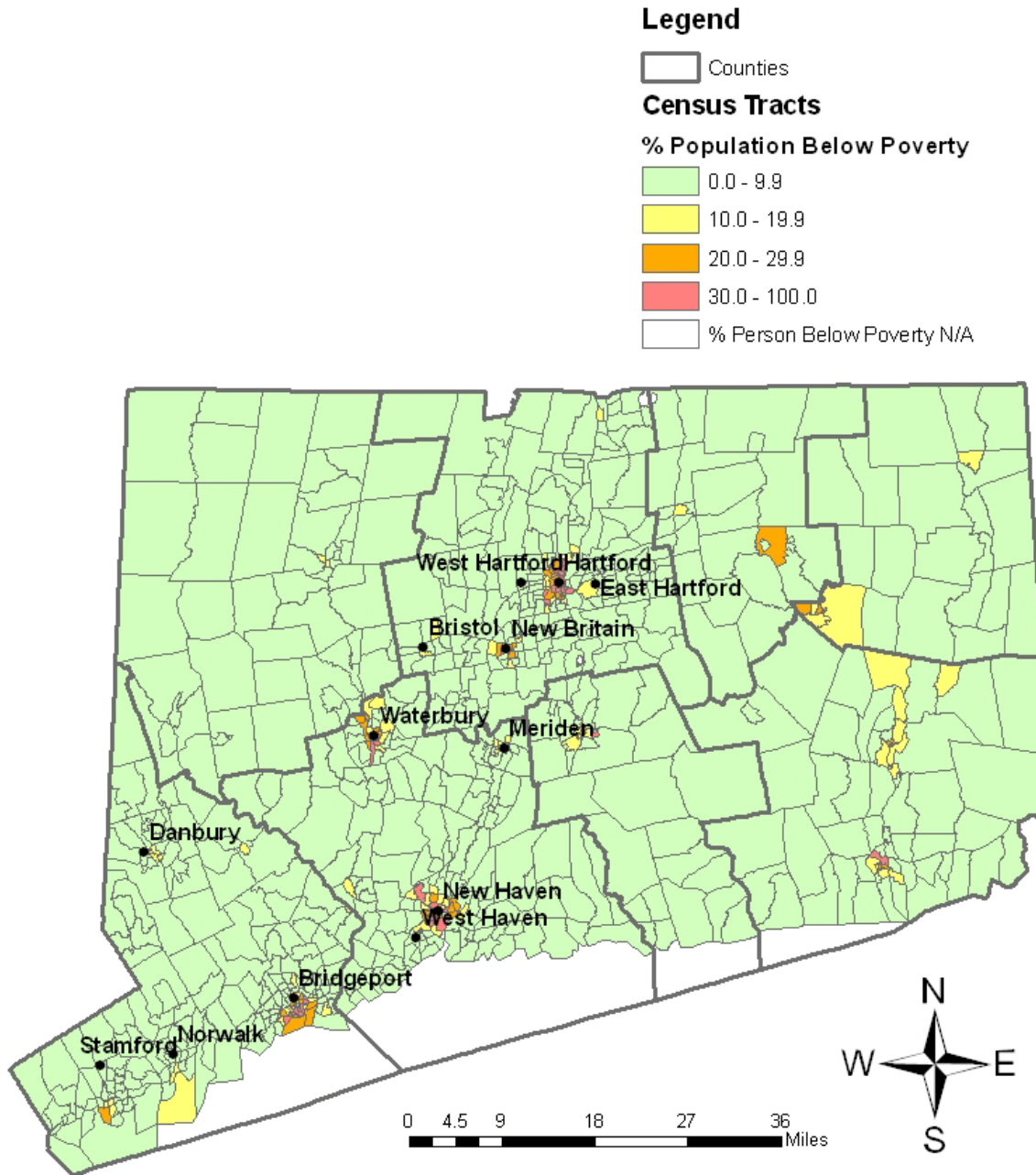
Web Figure 5. San Francisco/Oakland, CA, area with census-tract poverty rate.



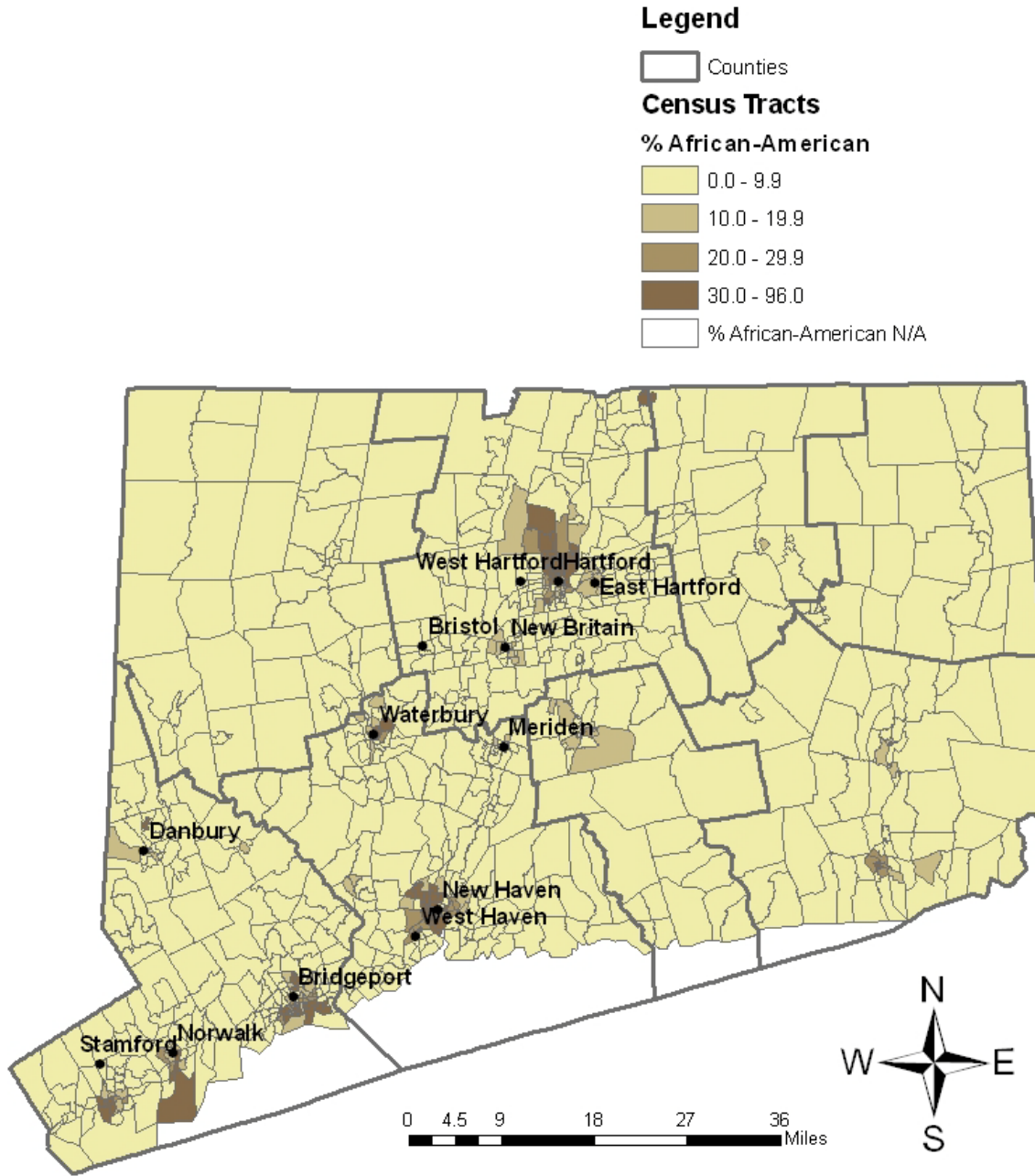
Web Figure 6. San Francisco/Oakland, CA, area with census-tract percent African American.



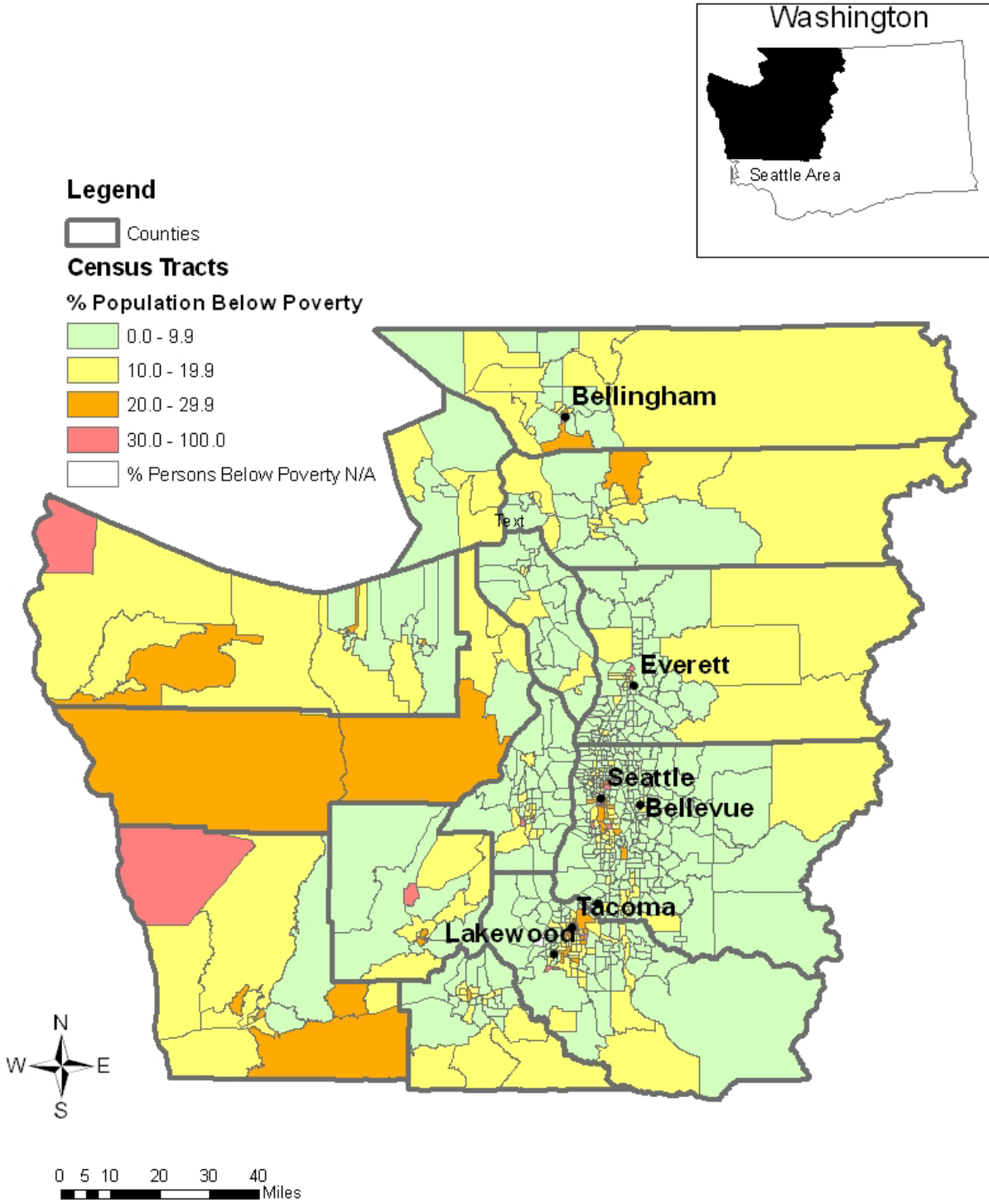
Web Figure 7. State of Connecticut with census-tract percent poverty rate.



Web Figure 8. State of Connecticut with census-tract percent African Americans.



Web Figure 9. Seattle/Puget Sound area, WA, with census-tract poverty rate.



Web Figure 10. Seattle/Puget Sound area, WA, with census-tract percent African American.

