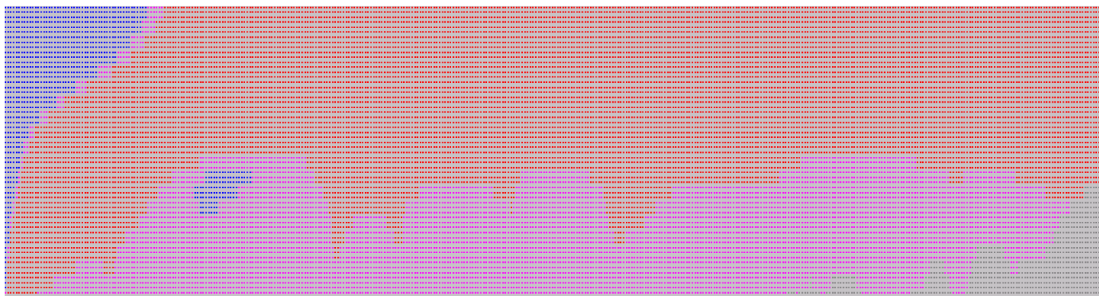
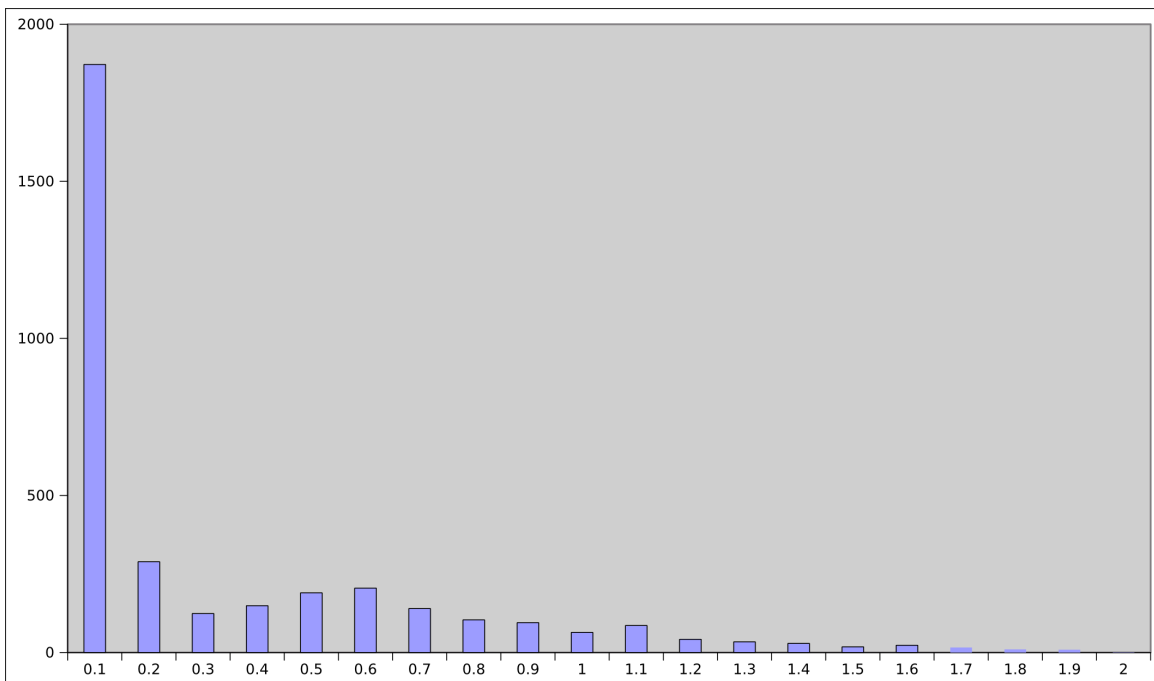
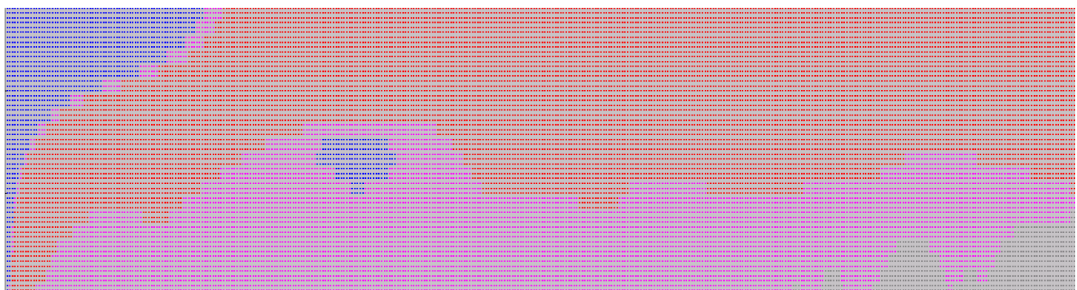
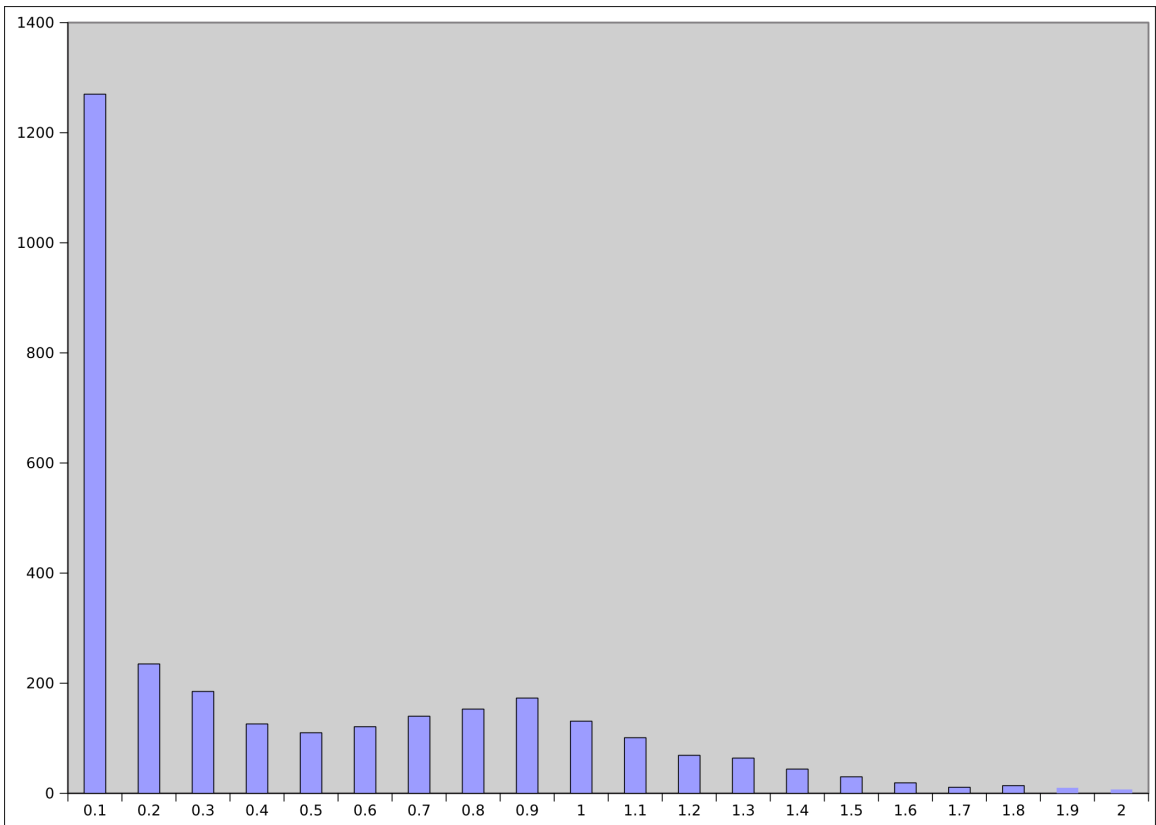


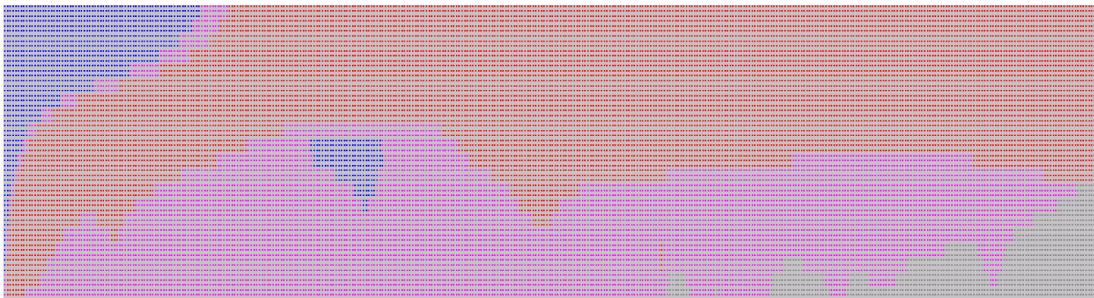
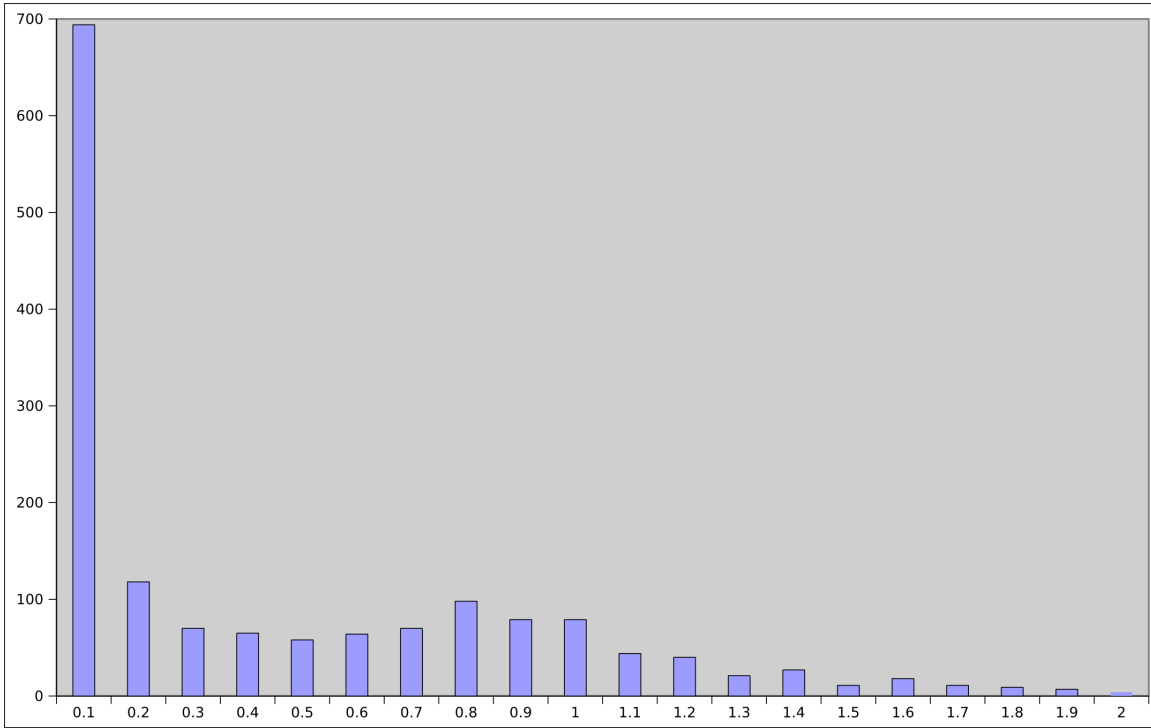
Figure S2. Histograms and SiZer maps of gene duplication ages for 14 species of Compositae. X-axes of all figures are K_s , whereas histogram y-axes are the number of gene duplications. SiZer maps below histograms identify significant features at corresponding K_s values based on multiple kernel density estimates of the data with blue areas indicating significantly increasing slopes, red indicating significantly decreasing slopes, purple representing no significant slope change, and gray indicating not enough data for the test.



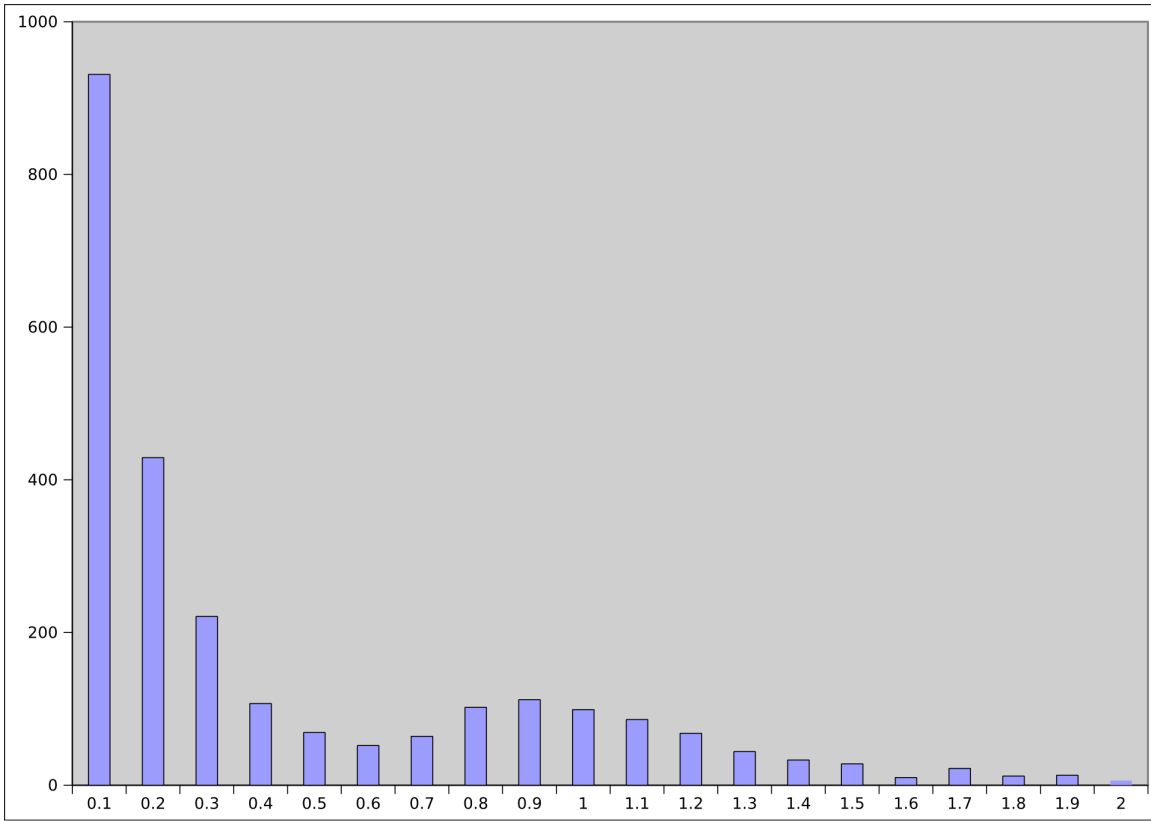
Helianthus annuus



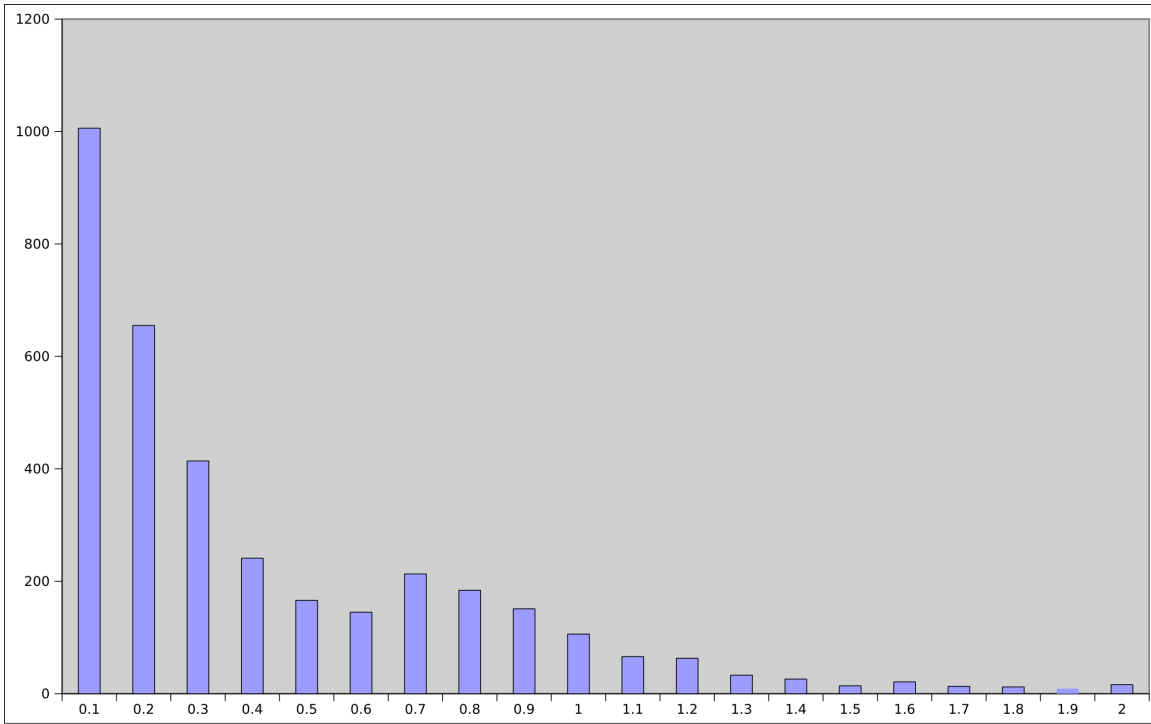
Lactuca sativa



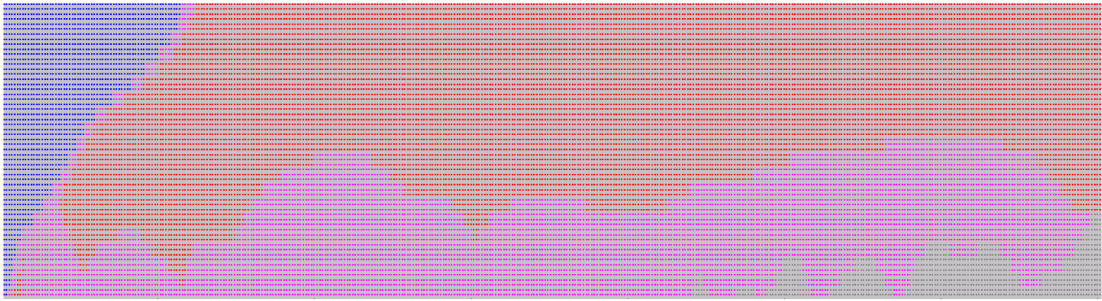
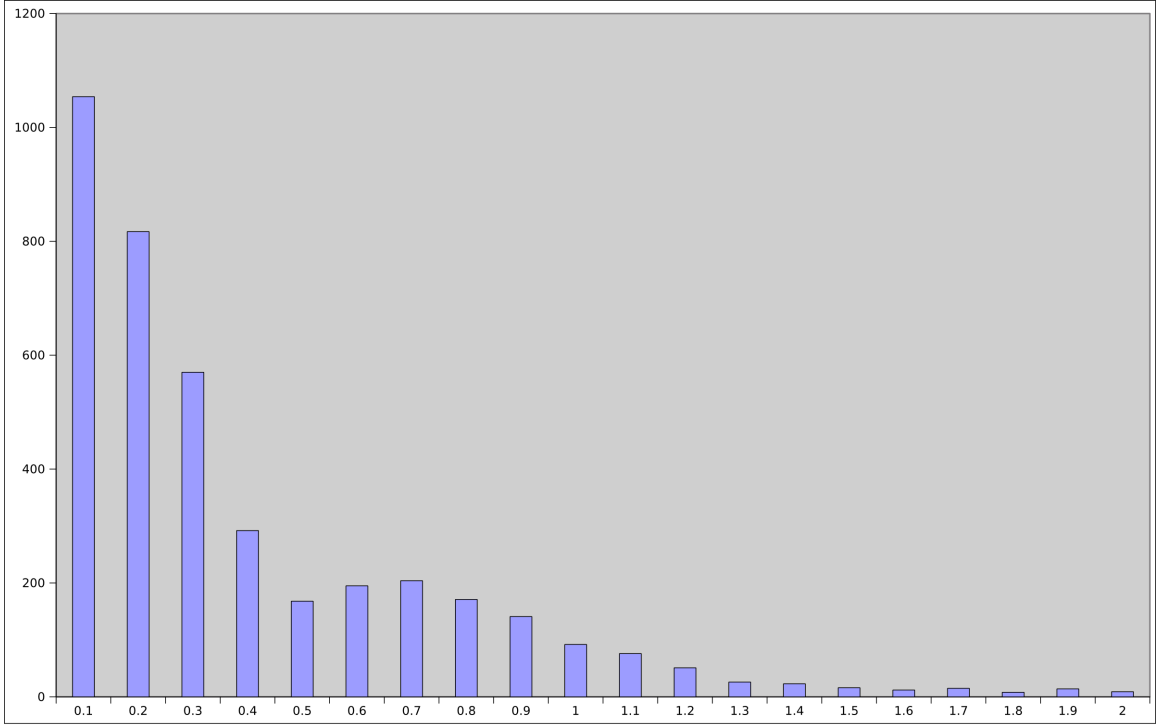
Lactuca serriola



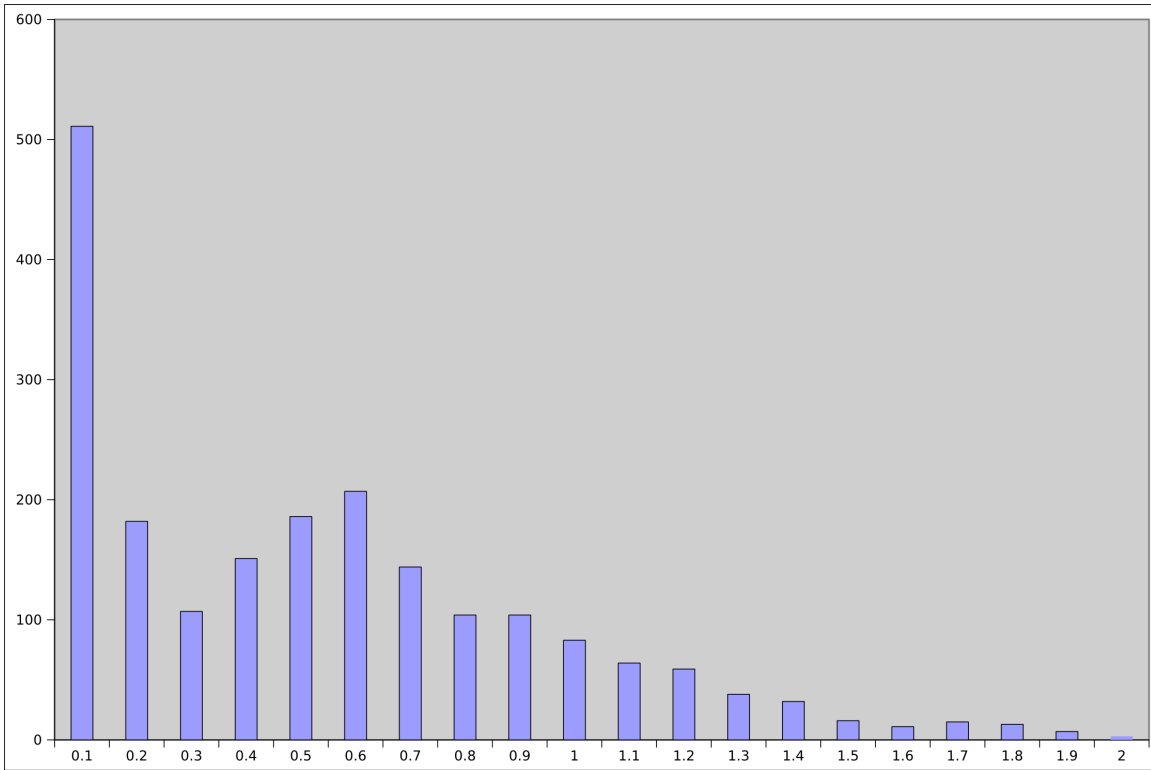
Cichorium endivia



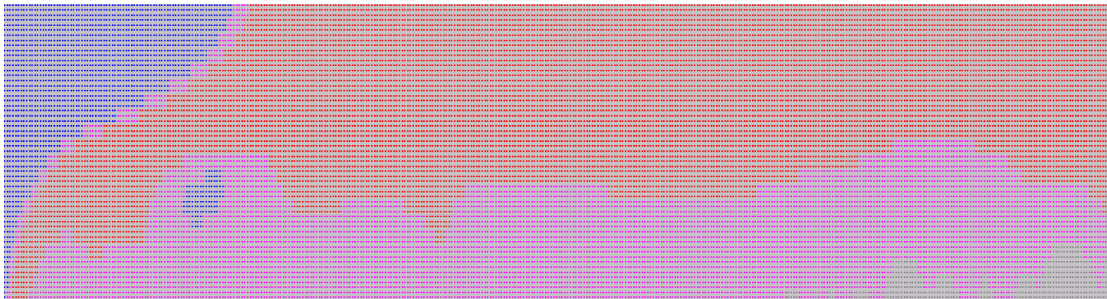
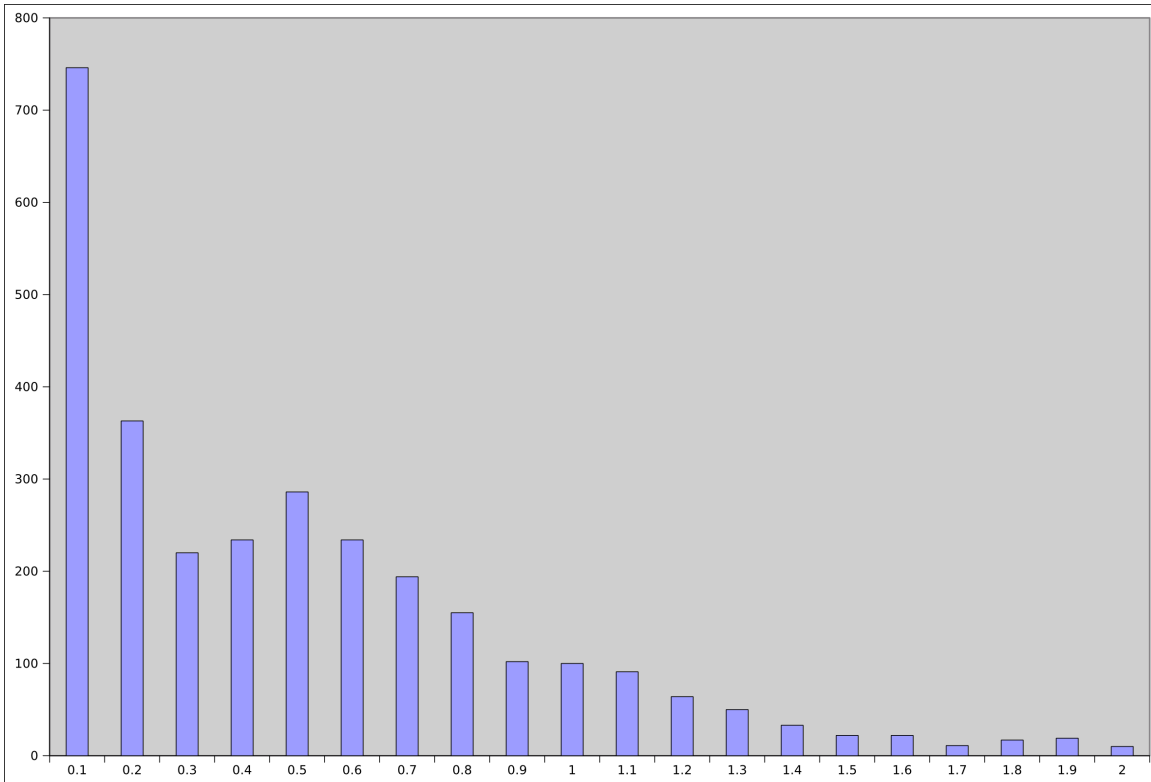
Centaurea maculosa



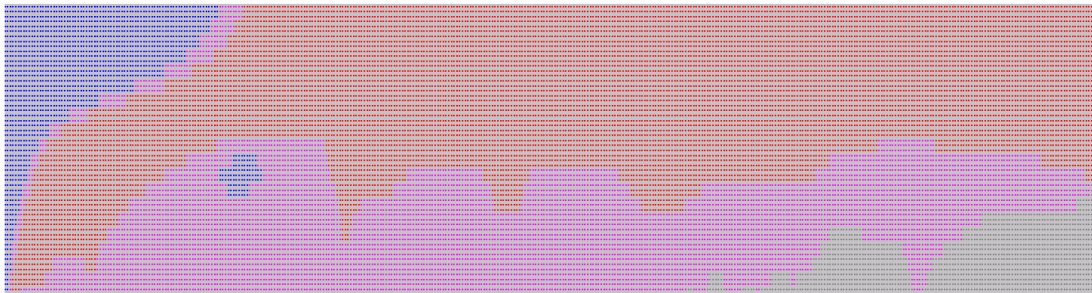
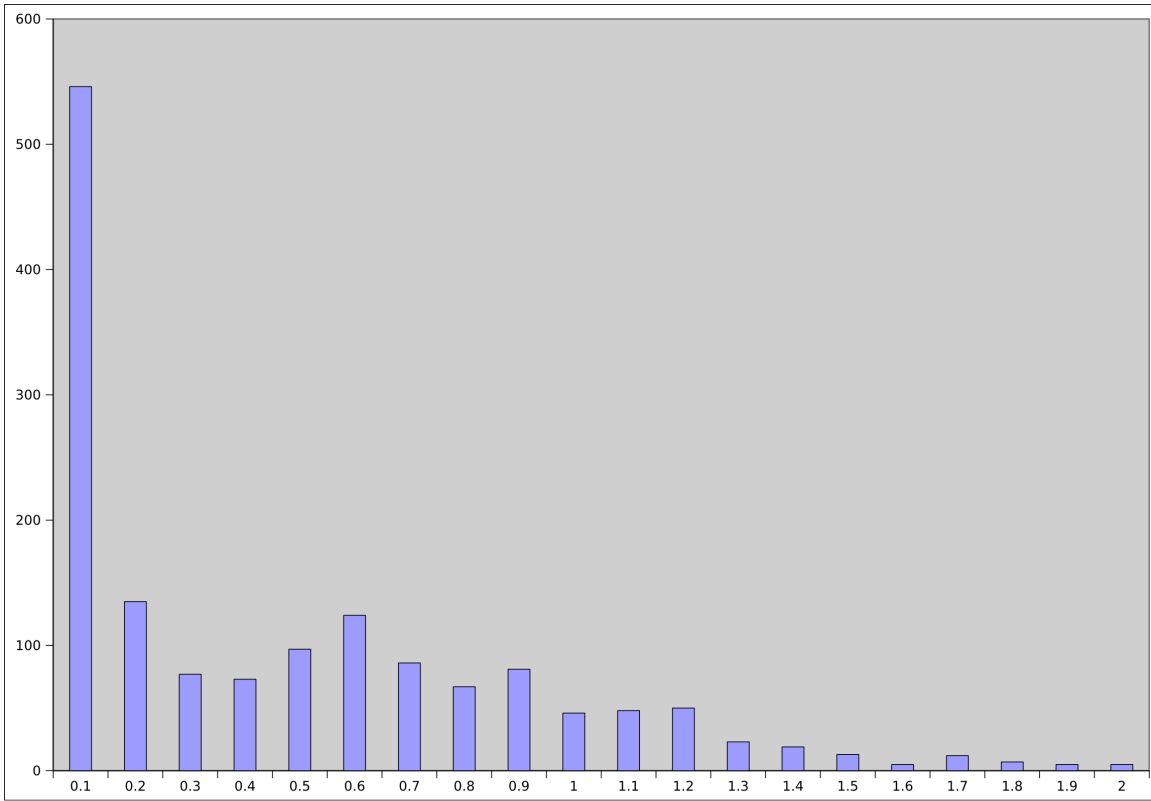
Centaurea solstitialis



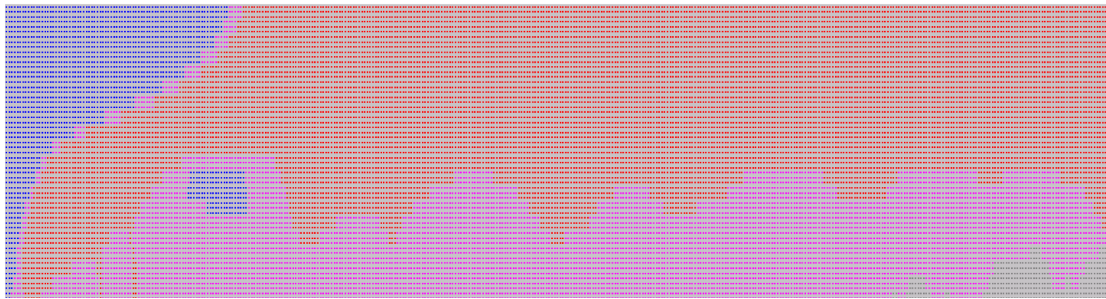
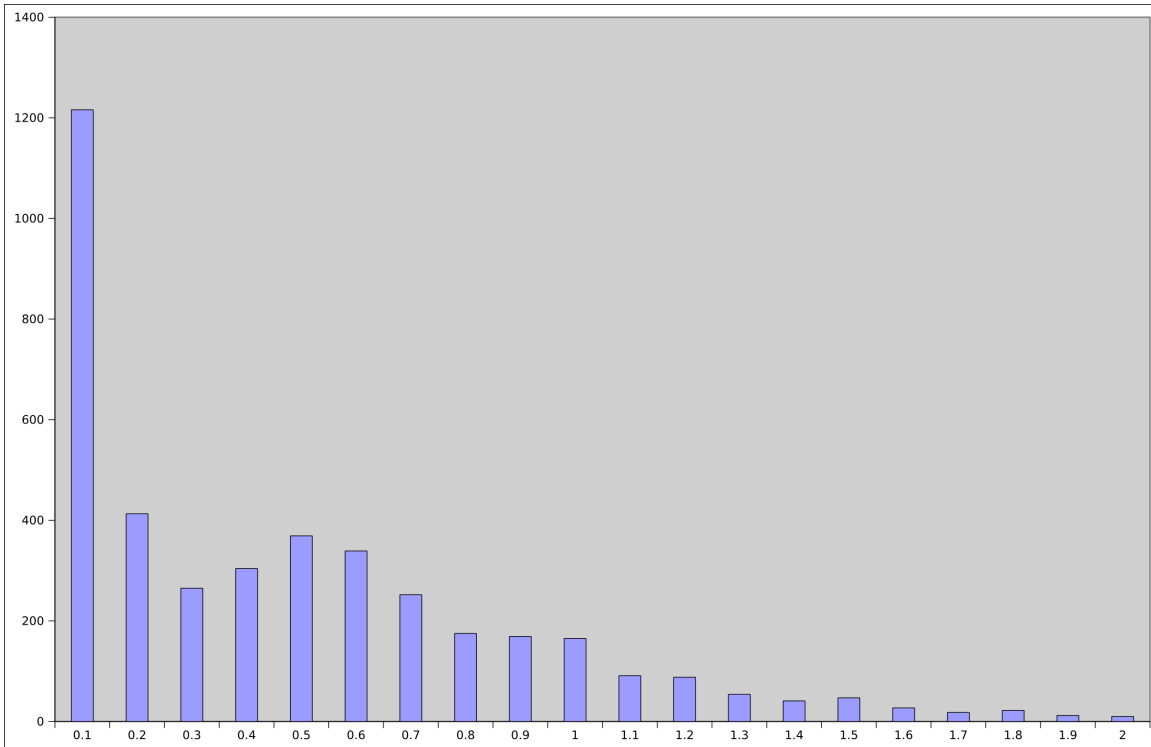
Helianthus ciliaris



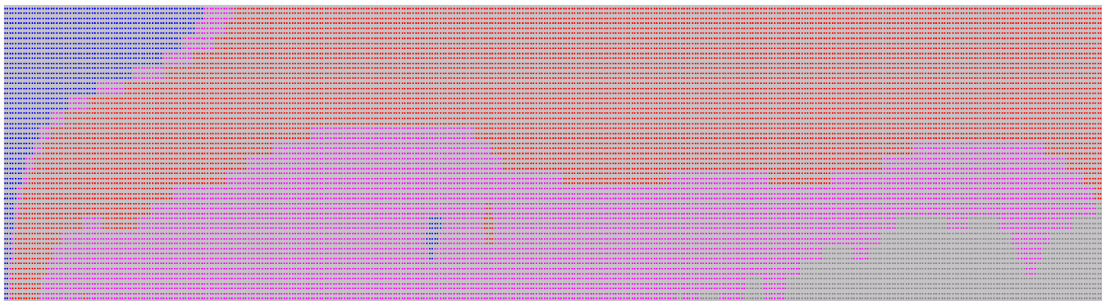
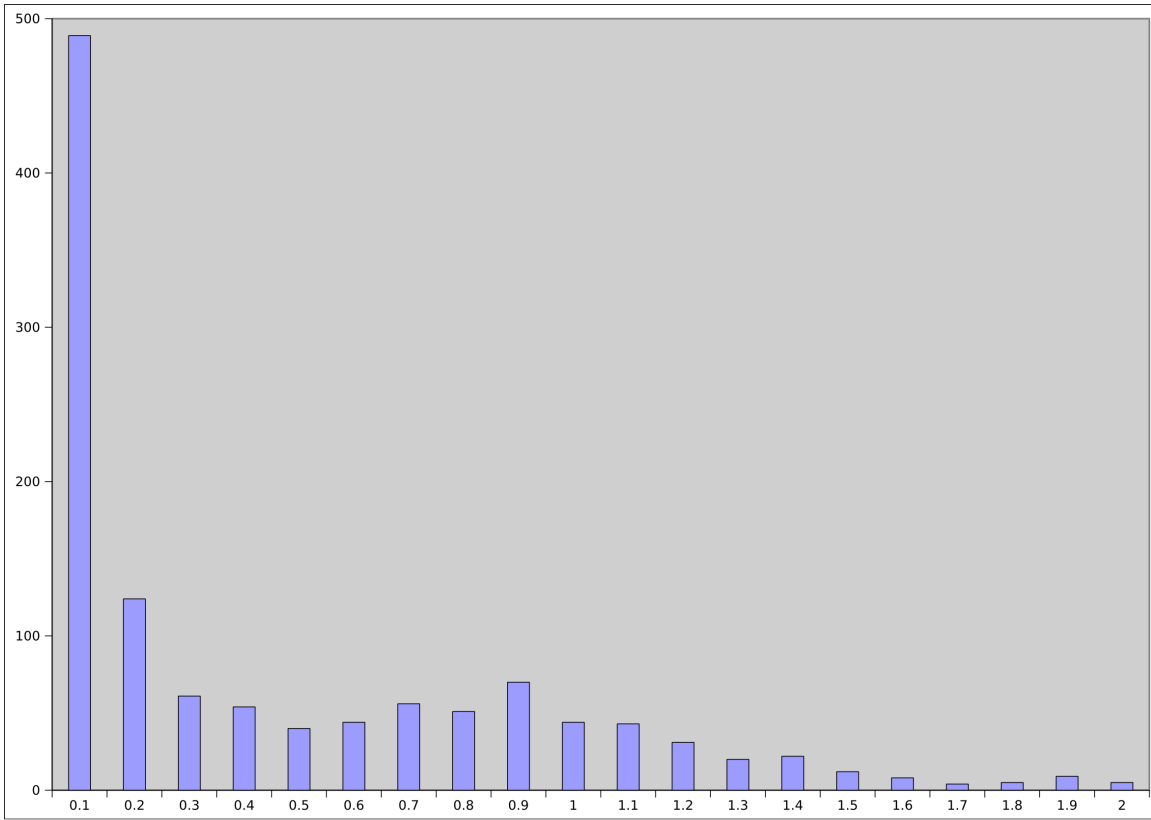
Helianthus exilis



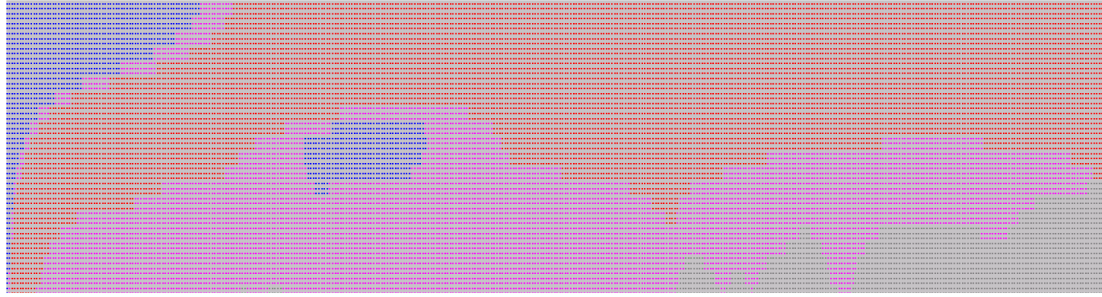
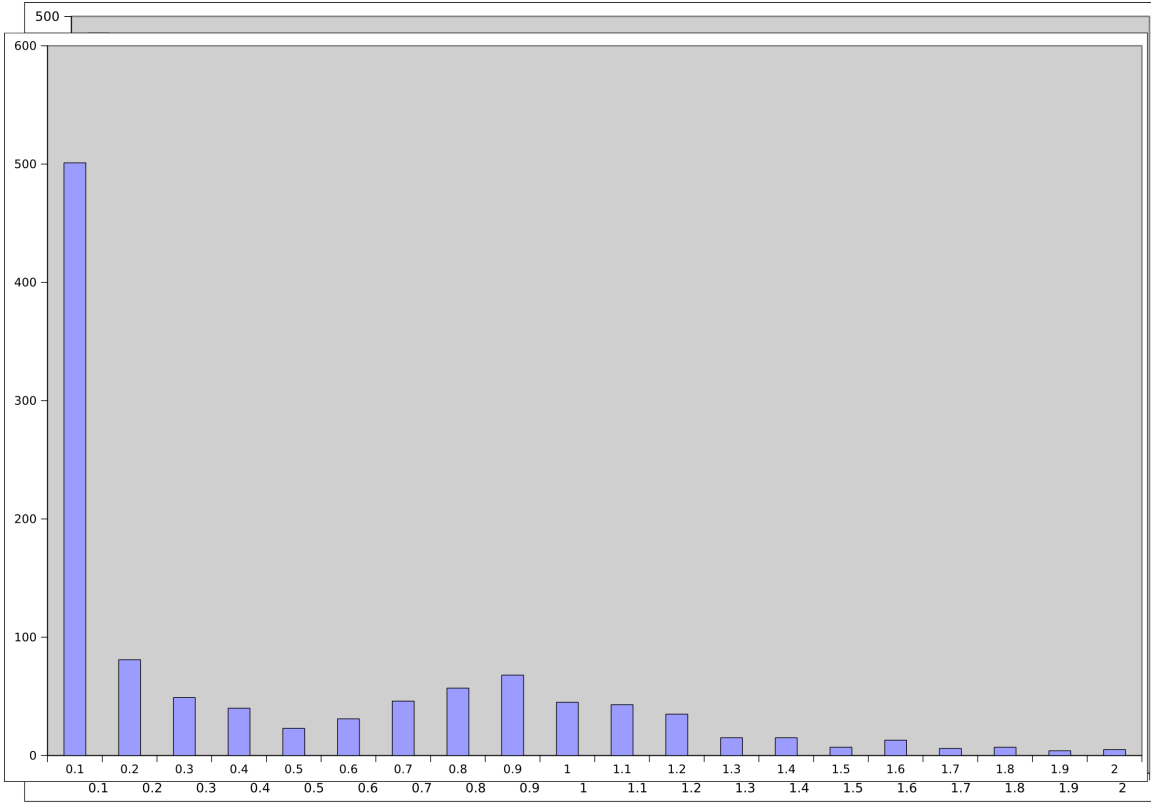
Helianthus petiolaris



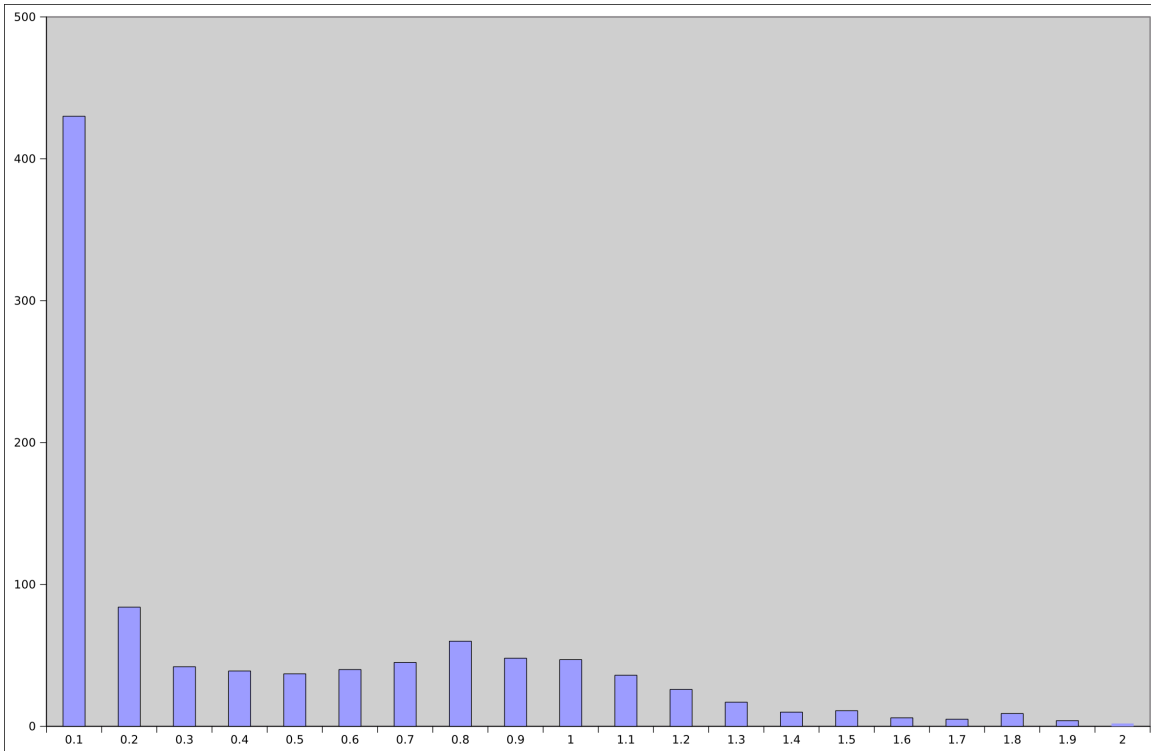
Helianthus tuberosus



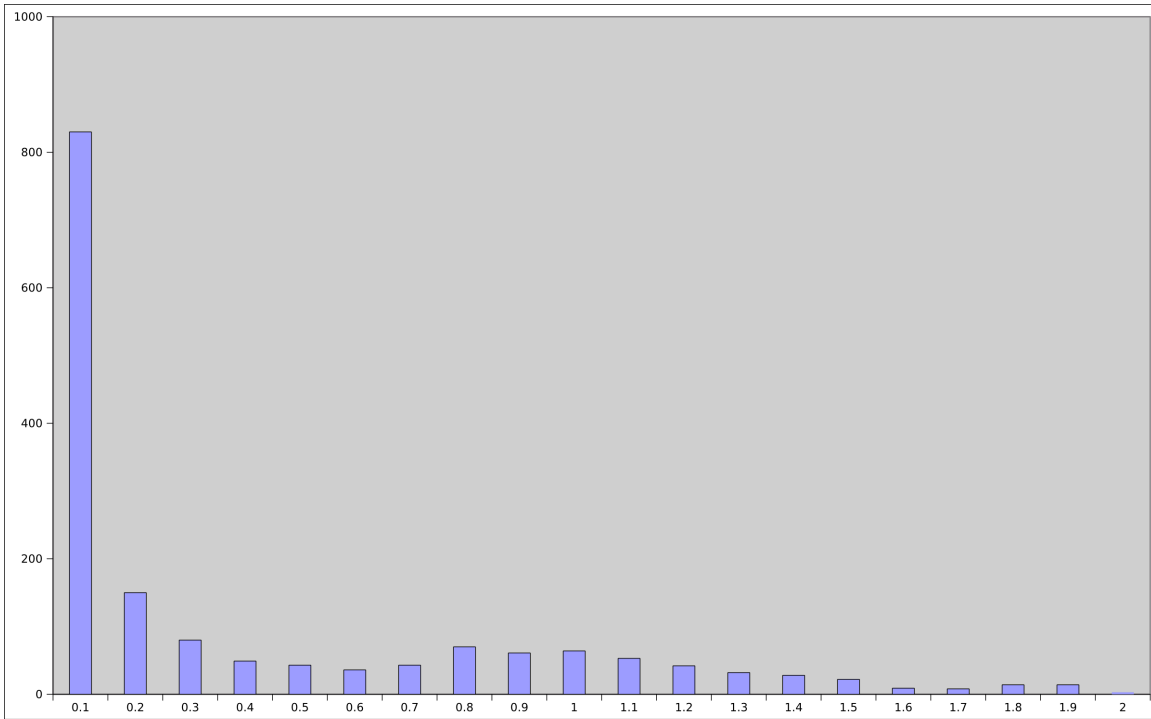
Lactuca perennis



Lactuca saligna



Lactuca virosa



Taraxacum officianale