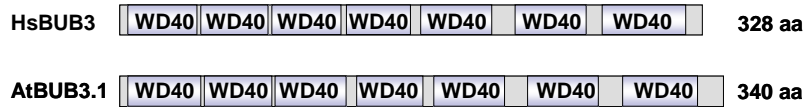


**A**



**B**

		WD-40 #1		**
AtBUB3.1	(1)	MTT	VTPSAGRELSNPPSD	ISNLRFS - NNSDHLVLSWDKRVRL -- YD
AtBUB3.2	(1)	MTL	VPAIGRELSNPPSD	ISNLRFS - NNSDHLVLSWDKRVRL -- YD
DmBUB3	(1)	---	MRPPEFKLNNPPSD	ISAVKFGKSNQYMAASWDGTLRF -- YD
HsBUB3	(1)	---	MTGSNEFKLNQPPSD	ISVVKFSPNTSQFLVLSWDTSVRL -- YD
mBUB3	(1)	---	MTGSNEFKLNQPPSD	ISVVKFSPNTSQFLVLSWDTSVRL -- YD
XBUB3	(1)	---	MTGSNEFKLNQPPSD	ISAVKFSPTNSQFLVLSWDSSVRL -- YD
ScBUB3	(1)	---	MQIVQIEQAPKDY	ISDIKIIISKSL - LLLIT
		WD-40 #2		**
AtBUB3.1	(57)	HGG	AVDPCFHD	-- FSGF SVGADYKVRRIVF - NVGKEDILGTHDKAVRCVEYSYAAG-OV
AtBUB3.2	(56)	HGG	AVDPCFHD	-- SSGF SVCADTKVRIIDF - NAGKEDVLGTHEKAVRCVEYSYAAG-OV
DmBUB3	(54)	QDA	PLDQDQMDI	-- VHVVSGLDNLRLFDV - NTQAESIIQAHEEP
HsBUB3	(55)	HTG	AVDPCAFYDP	-- THAWSGGLDHLKMHDL - NTDOENLVGTHDAP
mBUB3	(55)	HTG	AVDPCAFYDP	-- THAWSGGLDHLKMHDL - NTDOENLVGTHDAP
XBUB3	(55)	HAG	PVLDCAFYDP	-- THAWSGGLDHLKMHDL - NTDOENLVGTHDAP
ScBUB3	(55)	YKH	PLDQDQMDI	NTDLQIYVGVTVQGEILKVDLIGSPFQALTNNEANL
		WD-40 #3		**
AtBUB3.1	(114)	ITG	SWDQTVKLDWR	RR - GASGPTERTQ -- VGTYLQPE - RVVSM
AtBUB3.2	(113)	ITG	SWDQTVKLDWR	RR - GASGPTERTQ -- IGTYMOPE - RVNSLSLVGNRLV
DmBUB3	(111)	ITG	SWDQTVKLDWR	RR - EKRK - VGTFEQNNKGVYSMSVIDEKIV
HsBUB3	(112)	VITG	SWDQTVKLDWR	RR - TPCN - AGTF
mBUB3	(112)	VITG	SWDQTVKLDWR	RR - TPCN - AGTF
XBUB3	(112)	VITG	SWDQTVKLDWR	RR - TPCN - AGTF
ScBUB3	(116)	IAA	SWDGLLEVIDR	PNYDGVIAVKLNLSNNTKVKNKIF
		WD-40 #4		**
AtBUB3.1	(171)	L	RNM	SQPE - ORRES
AtBUB3.2	(170)	L	RNM	SQPE - ORRES
DmBUB3	(164)	L	RKM	DSYI - MKRES
HsBUB3	(164)	L	RNM	GYVQ - ORRES
mBUB3	(164)	L	RNM	GYVQ - ORRES
XBUB3	(164)	L	RNM	GYVQ - ORRES
ScBUB3	(177)	P	PLCEDD	NGTIEE
		WD-40 #5		**
AtBUB3.1	(228)	E	KCHR	KEAGRDIVYPVNSIA
AtBUB3.2	(227)	E	KCHR	KEAGRDIVYPVNSIA
DmBUB3	(221)	E	KCHR	NRNENLEQIYPVNSIA
HsBUB3	(221)	E	KCHR	LKENNLEQIYPVNSIA
mBUB3	(221)	E	KCHR	LKENNLEQIYPVNSIA
XBUB3	(221)	E	KCHR	LKENNLEQIYPVNSIA
ScBUB3	(238)	E	KCHR	LNKDNLAYPVNSIA
		WD-40 #6		**
AtBUB3.1	(287)	S	ALSF	SRDGLDAVASSYTFE
AtBUB3.2	(287)	S	ALSF	SRDGLDAVASSYTFE
DmBUB3	(280)	S	TLN	FSRSDGSAFA
HsBUB3	(280)	S	ASLAF	SNDGTTDAVASSYTFE
mBUB3	(280)	S	ASLAF	SNDGTTDAVASSYTFE
XBUB3	(280)	S	ASLAF	SNDGTTDAVASSYTFE
ScBUB3	(298)	V	KIA	CSDNILQD
		WD-40 #7		**
AtBUB3.1	(340)	S	ALSF	SRDGLDAVASSYTFE
AtBUB3.2	(339)	S	ALSF	SRDGLDAVASSYTFE
DmBUB3	(326)	S	TLN	FSRSDGSAFA
HsBUB3	(328)	S	ASLAF	SNDGTTDAVASSYTFE
mBUB3	(326)	S	ASLAF	SNDGTTDAVASSYTFE
XBUB3	(324)	S	ASLAF	SNDGTTDAVASSYTFE
ScBUB3	(341)	V	KIA	CSDNILQD

**Figure S2. Sequence comparison of BUB3-related proteins.** (A) Domain organisation of *Arabidopsis thaliana* AtBUB3.1 and *Homo sapiens* HsBUB3. (B) Alignment of the BUB3-related proteins from *A. thaliana* (AtBUB3.1, At3g19590; AtBUB3.2, At1g49910), *Drosophila melanogaster* (DmBUB3, NP477381), *Homo sapiens* (HsBUB3, O43684), *Mus musculus* (mBUB3, Q9WVA3), *Xenopus laevis* (XBUB3, Q98UH2) and *Saccharomyces cerevisiae* (ScBUB3, P26449). The WD-40 repeats are underlined and the BUB3 WD signature sequence indicated by asterisks.