

Supporting Information

Seidl et al. 10.1073/pnas.0904936106

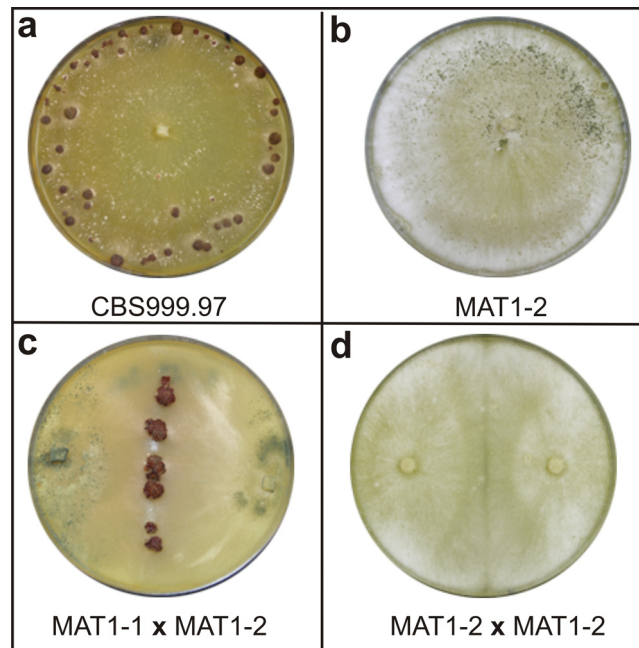


Fig. S1. Fruiting body formation in *H. jecorina*. (A) The wild-type isolate CBS999.97 forms stromata on the agar plate without the obvious presence of a mating partner. (B) Cultures from single ascospore isolates do not form stromata under the same conditions anymore (shown for *H. jecorina* MAT1-2). (C and D) Instead they form stromata at the interaction zones with strains of the opposite mating type (C), but not upon confrontation with a strain of the same mating type (D) (shown for *H. jecorina* MAT1-2).

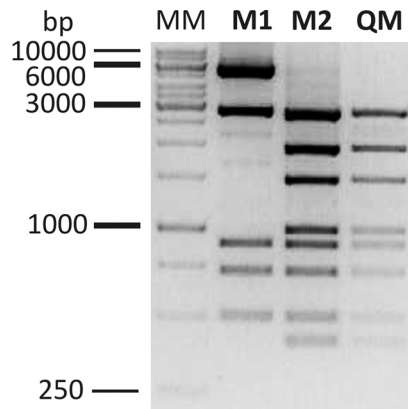


Fig. S2. Restriction fragment patterns of *H. jecorina* strains MAT1-1 and MAT1-2 and *T. reesei* QM6a. DNA fragment (3 μ g) of the *MAT*-locus, amplified with primers MATax2F and MATax2R (Table 1), was digested with *Pst*I. Restriction fragment patterns on a 0.8% agarose gel are shown. MM, molecular marker; M1, *H. jecorina* strain MAT1-1; M2, *H. jecorina* strain MAT1-2; QM, *T. reesei* strain QM6a. The size (bp) of the smallest, largest, and indicator bands of the molecular marker (GeneRuler 1-kb ladder; Fermentas) are given.

Table S1. Primers used in this study

Primer	Sequence 5'-3'
MATax2F*	CATCGAAGCATCTACCTACTTG
MATax2R*	CGAAGCGAAACACACGAC
matA1-fw [†]	TCCTCTCAATGCGTTCATGGC
matA1-rv [†]	AGAAGATCATTCTCTGTGTTGGGA
matA1-fwN [†]	TCCTGAAGTCCAACAGAAGAC
matA1-rvN [†]	AGATAGATAGAAGGCTCCGTGA
matA2-fw ^{†‡}	CTCGAGAGGGATATACACCAG
matA2-rv ^{†‡}	CTTCCTACCGGATGCCAGA
matA2-fwN [†]	ACTTAGGTCTGATGGCTATG
matA2-rvN [†]	AAGAGATCATATAGGCGGCA
matA3-fw [†]	ATCTCCATGTCTTTATCCCGAAG
matA3-rv [†]	CTTGATGTCGGGATATTTCTCC
matA3-fwN [†]	TCGCAACAGCTGGATCCTGTA
matA3-rvN [†]	GTTCCGGCCTCCATTTCTGTG
mat2fw [§]	CAACACGTATGAAAGAGAGATG
mat2rv [§]	ATTGGAACGGATCACCTTCTTG

*Amplification of mating type loci.

[†]RACE-PCR and RT-PCR.

[‡]Diagnostic PCR of *MAT1-1* loci.

[§]Diagnostic PCR of *MAT1-2* loci.