

SUPPLEMENTARY ONLINE DATA

GDI-1 preferably interacts with Rab10 in insulin-stimulated GLUT4 translocation

Yu CHEN*†¹, Yongqiang DENG*†¹, Jinzhong ZHANG*†, Lu YANG*†, Xiangyang XIE*† and Tao XU*²

*National Key Laboratory of Biomacromolecules, Institute of Biophysics, Chinese Academy of Sciences, Beijing, 100101, China, and †Graduate School of the Chinese Academy of Sciences, Beijing, 100864, China

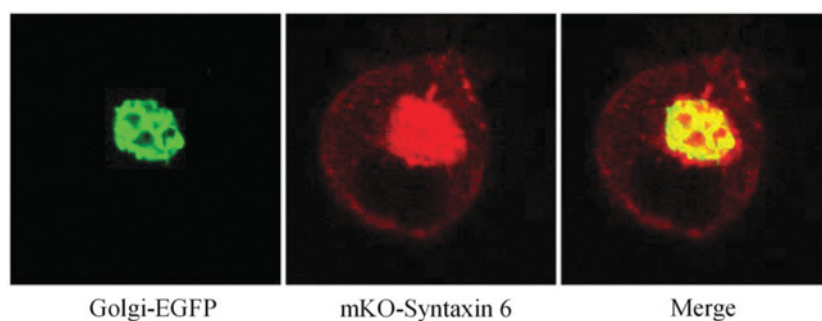


Figure S1 Localization of Syntaxin 6

3T3-L1 adipocytes were co-transfected with Golgi-EGFP and mKO-Syntaxin 6, and were observed under confocal microscopy.

Received 23 April 2009/25 June 2009; accepted 2 July 2009

Published as BJ Immediate Publication 2 July 2009, doi:10.1042/BJ20090624

¹ These authors contribute equally to this work.

² To whom correspondence should be addressed (email xutao@ibp.ac.cn).