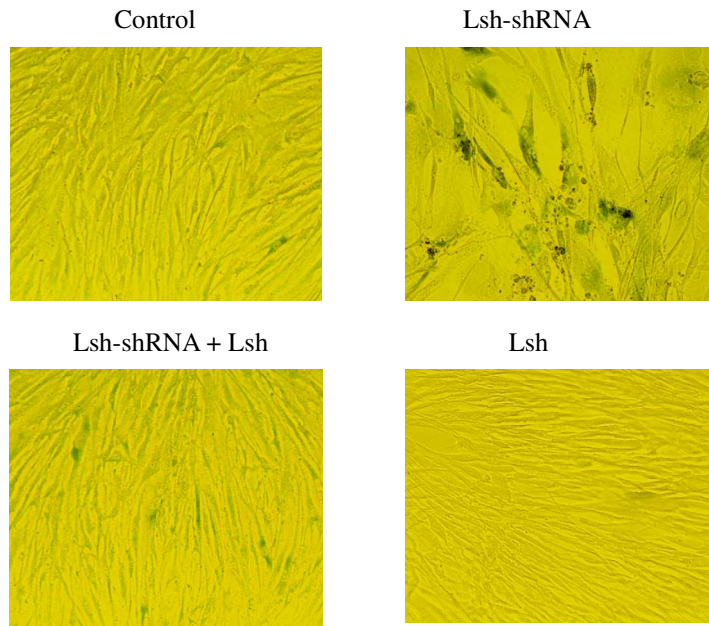
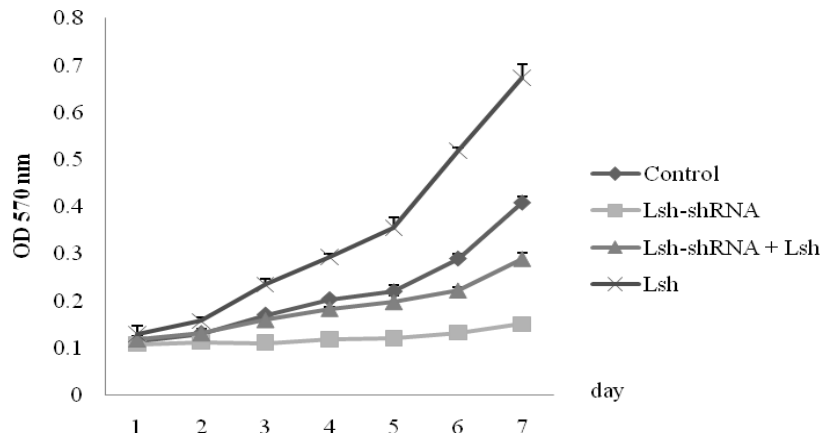


Figure 3S.

A.



B.



C.

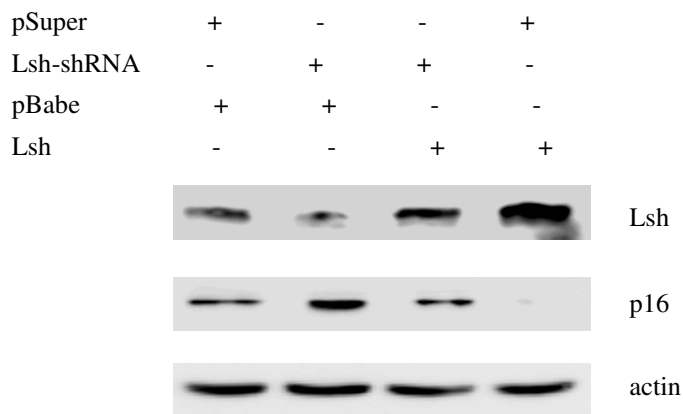


Figure 3S. Overexpression of Lsh rescues Lsh-shRNA-induced premature senescence. Young 2BS cells were infected with retroviruses expressing Lsh-shRNA, and then supplemented with exogenous Lsh by infection with retroviruses expressing Lsh. The stable transformants were passaged until one of them underwent senescence. (A) pSuper- or Lsh-shRNA-infected 2BS cells supplemented with or without exogenous Lsh were stained for SA- β -gal activity. (B) Cell growth assay performed in 2BS cells by MTT method. (C) Immunoblot analysis of the expression levels of Lsh and p16 in 2BS cells exposed to the indicated perturbations.