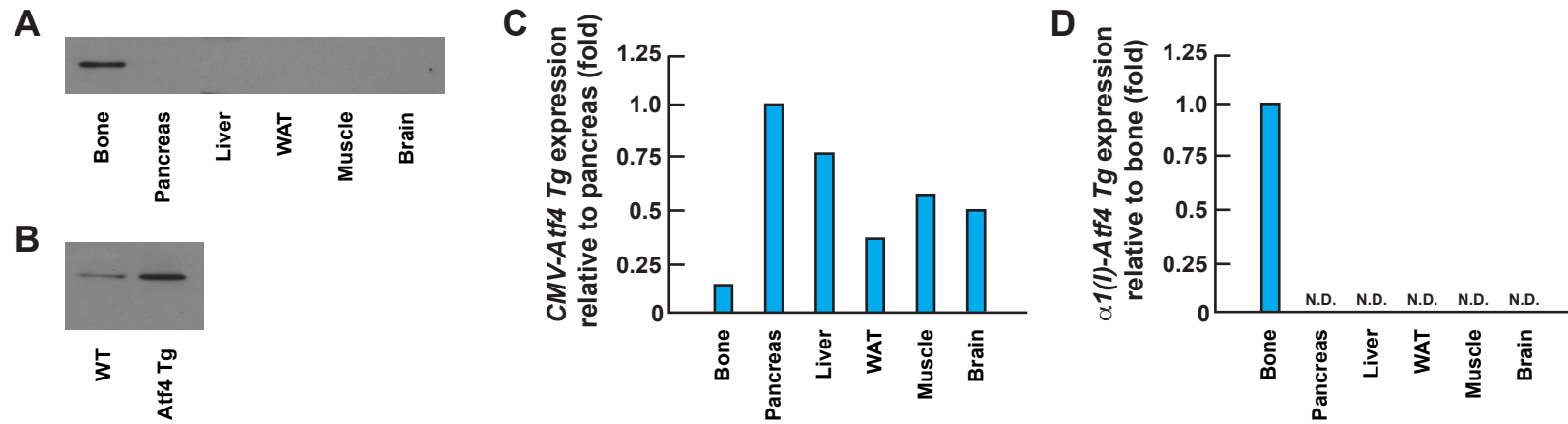


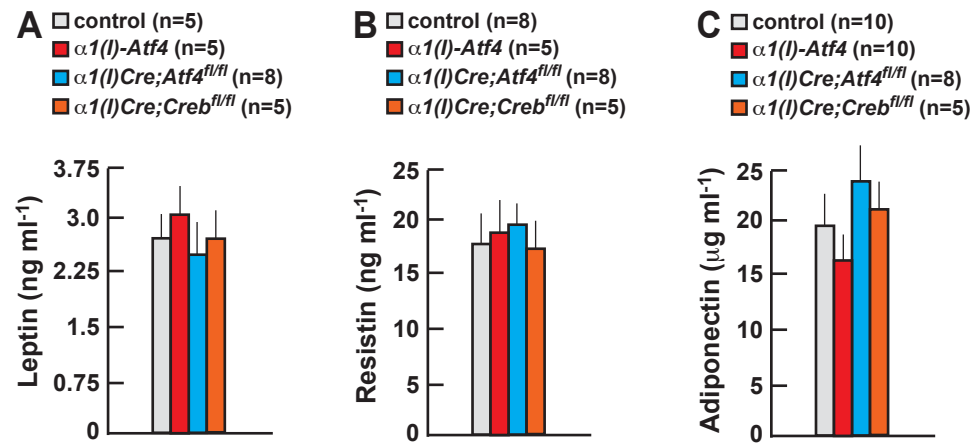
Supplemental figure 1

Comparison of insulin signaling pathway and gene expression in *Atf4*^{-/-} liver and hepatocytes. **(A)** Quantification of Akt phosphorylation in *Atf4*^{-/-} liver and muscle at basal and insulin stimulated condition. **(B)** Phosphorylation of GSK-3 β in *Atf4*^{-/-} liver (upper panel) or cultured hepatocytes at basal and insulin stimulated condition. **(C)** Expression of *Pgc1 α* , *Ppar γ* and *Mcad* in *Atf4*^{-/-} liver or cultured hepatocytes. N.S.: not significant.



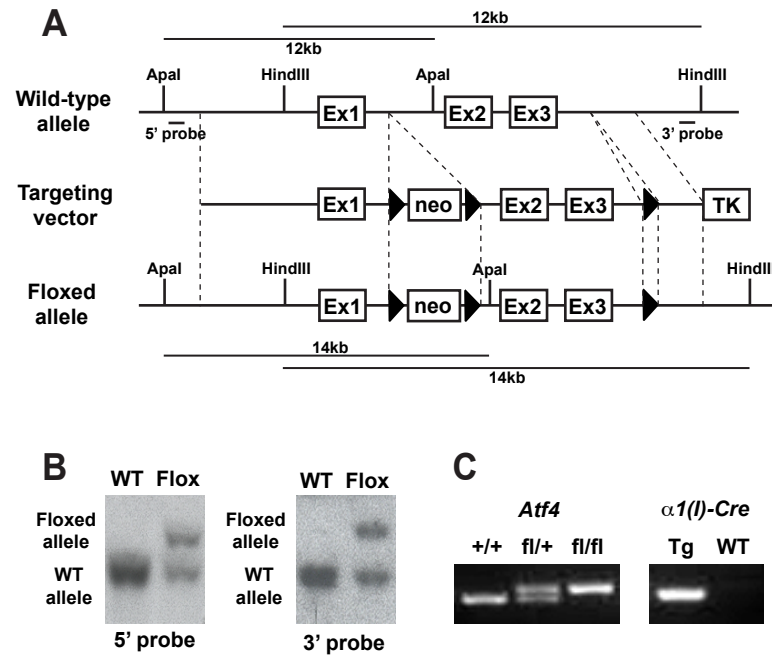
Supplemental figure 2

Quantification of *Atf4* transgene. **(A)** *Atf4* protein expression in several tissues of $\alpha 1(I)$ *Collagen-Atf4* transgenic mice. **(B)** *Atf4* protein expression in bone of WT and $\alpha 1(I)$ *Collagen-Atf4* transgenic mice. **(C)** Expression of *CMV-Atf4* transgene in various tissues relative to pancreas in *CMV-Atf4* transgenic mice. **(D)** Expression of $\alpha 1(I)$ *Collagen-Atf4* transgene in various tissues relative to bone in $\alpha 1(I)$ *Collagen-Atf4* transgenic mice. N.D.: not detected.



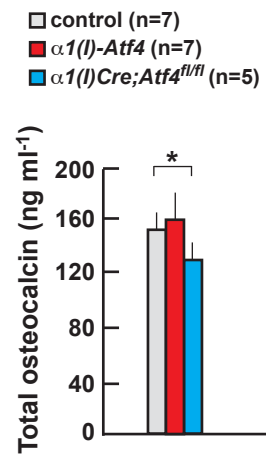
Supplemental figure 3

Levels of Adipokines in mutant mice. Serum (A) leptin, (B) resistin and (C) adiponectin levels in $\alpha 1(I)$ Collagen-Atf4, $\alpha 1(I)$ Collagen-Cre;Atf4^{fl/fl} and $\alpha 1(I)$ Collagen-Cre;Creb^{fl/fl} mice.



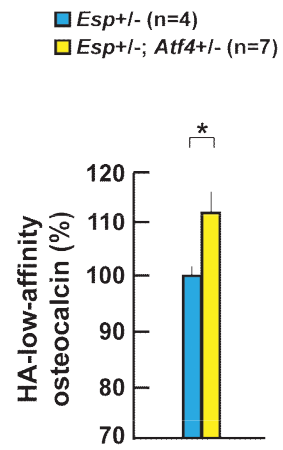
Supplemental figure 4

Generation of *Atf4^{osb}* mice. **(A)** Targeting construct for conditional inactivation of *Atf4*. White box, exon; black triangles, LoxP sites. **(B)** Southern blot analysis of *Atf4-flox* clone. The 5' probe detected a 12 kb WT and 14 kb targeted band while 3' probe detected 12 kb WT and 14 kb targeted band. **(C)** PCR genotyping of *Atf4^{osb}* mice. WT and floxed allele yield 600 bp and 640 bp products, respectively. $\alpha 1(I)$ -collagen-Cre transgenic mice harbor a transgene-specific band.



Supplemental figure 5

Level of osteocalcin in mutant mice. Serum total osteocalcin level in $\alpha 1(I)\text{Collagen-Atf4}$ and $\alpha 1(I)\text{Collagen-Cre;Atf4}^{fl/fl}$ mice.



Supplemental figure 6

Serum uncarboxylated osteocalcin levels in *Esp*^{+/-} and *Esp*^{+/-}; *Atf4*^{+/-} mice.

Error bars, mean + SEM. *: P<0.05

Table S1 **Insulin sensitivity analysis of eight week-old *Atf4_{osb}* ^{-/-} mice analyzed by hyperinsulinemic-euglycemic clamps.**

Genotype	Control (n=3)	<i>Atf4_{osb}</i> ^{-/-} (n=3)
Body weight (g)	25.0 ± 1.1	20.0 ± 0.3*
Basal glucose (mg/dl)	120.0 ± 12.7	94.7 ± 9.0
Clamp glucose (mg/dl)	101.7 ± 8.7	118.0 ± 14.0
Glucose infusion rate (mg/kg/min)	47.2 ± 4.2	69.3 ± 2.5*
Basal hepatic glucose production (mg/kg/min)	10.4 ± 0.8	13.2 ± 0.9
Clamp hepatic glucose production (mg/kg/min)	2.4 ± 1.1	0.6 ± 1.6
Liver action (%)	77.5 ± 11.2	90.5 ± 9.0
Glucose turnover (mg/kg/min)	49.6 ± 4.2	69.9 ± 3.0*
Whole body glycolysis (mg/kg/min)	32.9 ± 7.6	28.2 ± 1.6
Glycogen synthesis (mg/kg/min)	16.7 ± 7.2	41.7 ± 4.3*

*: P < 0.05