

Table ST1. Identified peptide fragments of protein analyzed by MALDI-TOF/MS

Protein	identified peptide fragments
PhaC-linker-SG-linker-GFP	V21-R36, I63-R74, T109-R125, F115-R125, A126-R141, F146-R169, L170-R180, G193-R207, I195-R207, N208-K234, Y250-R263, H264-R278, N279-R299, L456-R478, F501-K518, A564-R573, G630-K652, T723-R735
M-PhaC-linker-MalE	T21-R48, A53-R67, Y68-R79, A118-R143, E207-R234, L368-R376, L442-K464, V480-R495, I522-R533, F574-R584, F605-R628, L629-R639, I654-R666, N667-K693, Y709-R722, H723-R737, E830-R845, G846-K872, L915-R937, L1168-K1192, G1317-K1338, G1392-R1409
PhaC-GFP	I63-R74, T109-R125, F115-R125, A126-R141, L170-R180, L170-R184, G193-R207, R563-R573, A564-R573, Y574-K586, A576-K586, T687-R699
ZZ-PhaC-GFP	S149-R169, V154-R169, I196-R207, Y208-K223, A224-R234, F248- R258, A259-R274, I277-R302, F279-R302, L303-R313, G326-R340, I328-R340, N341-K367, Y383-R396, H397-R411, N412-R432, D439- R468, E504-R519, G520-K546, L589-R611, E612-K631, F634-K651, A697-R706, S809-R819, T820-R832, A833-R845, A833-K849, G850- K863, D939-K961

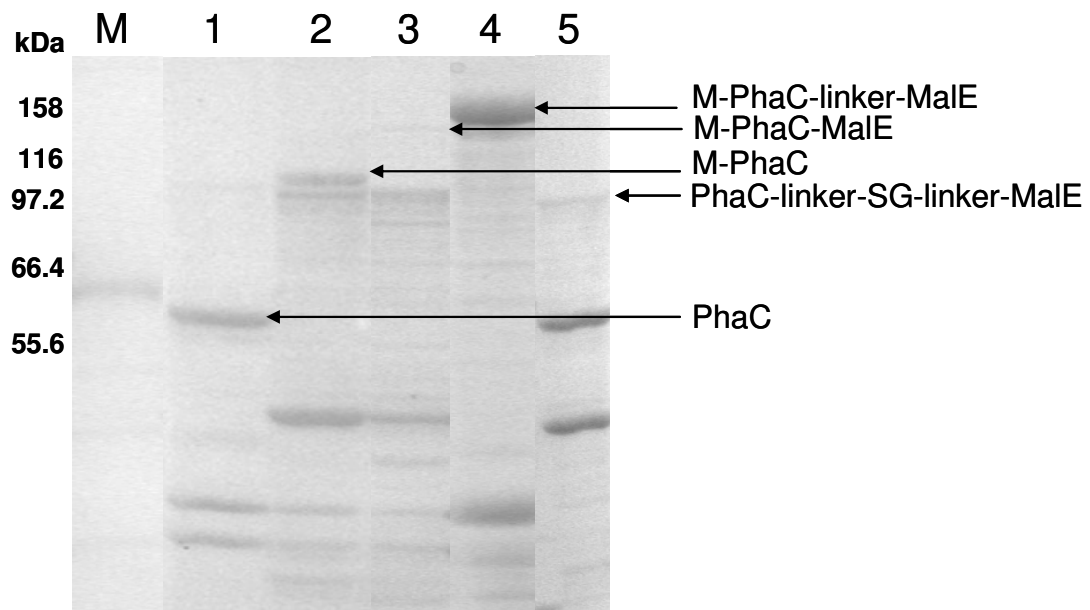


Figure S1. Protein profile of different PHB granules demonstrated by SDS-PAGE analysis. M, molecular mass standard (New England Biolabs, UK); lane 1, BL21(DE3)(pETC); lane 2, BL21(DE3)(pET-14b M-PhaC); lane 3, BL21(DE3)(pET-14b M-PhaC-MalE); lane 4, BL21(DE3)(pET-14b M-PhaC-linker-MalE); lane 5, BL21(DE3)(pET-14b PhaC-linker-SG-linker-MalE).

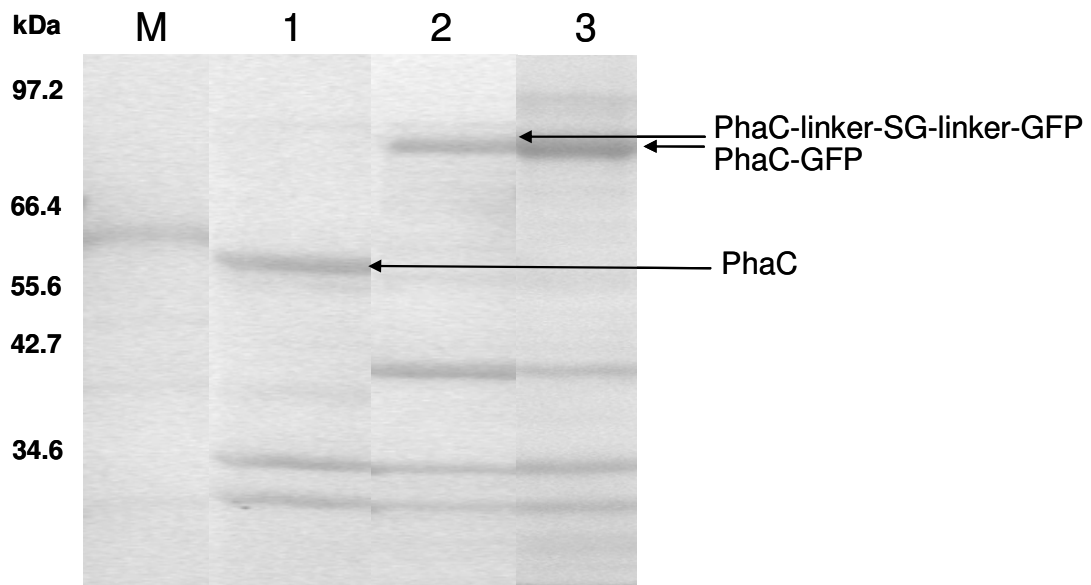


Figure S2. Protein profile of different PHB granules demonstrated by SDS-PAGE analysis. M, molecular mass standard (New England Biolabs, UK); lane 1, BL21(DE3)(pETC); lane 2, BL21(DE3)(pET-14b PhaC-linker-SG-linker-GFP); lane 3, BL21(DE3)(pET-14b PhaC-GFP).

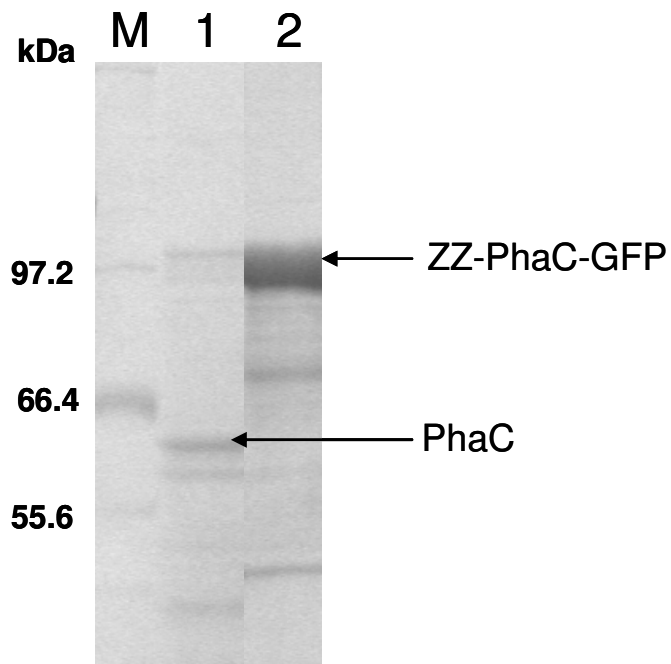


Figure S3. Protein profile of different PHB granules demonstrated by SDS-PAGE analysis. M, molecular mass standard (New England Biolabs, UK); lane 1, BL21(DE3)(pETC); lane 2, BL21(DE3)(pET-14b ZZ-PhaC-GFP).