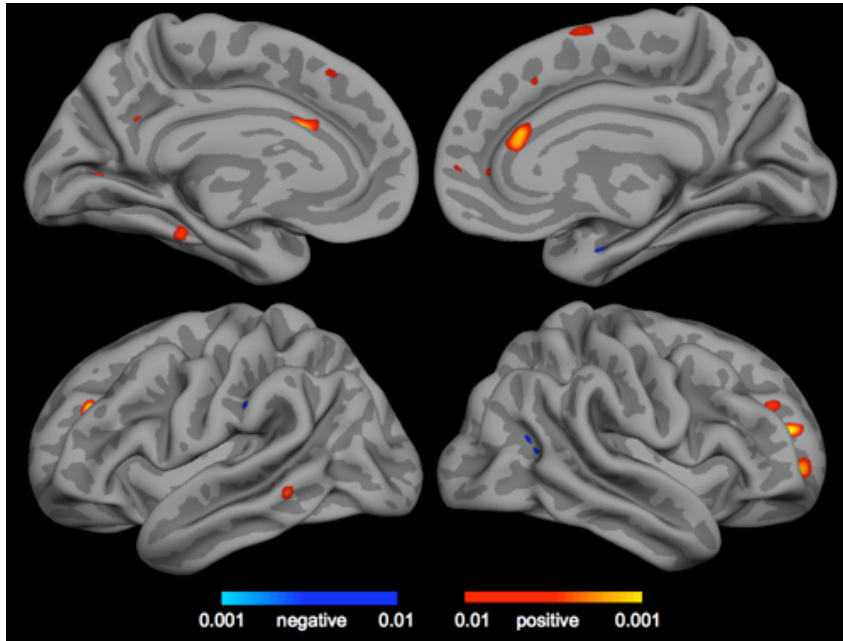


Supplemental figure for NEURON-D-09-00344R1 - Amyloid deposition is associated with impaired default network function in older persons without dementia



Multi-modal vertex to vertex correlation map of PIB and fMRI displayed on group surface map. PIB PET distribution value ratios (DVR) and HCH>Fixation fMRI contrast values were projected onto each subject's individual pial brain surfaces and then transformed to a template brain surface. Surface based smoothing (6mm) was then applied to account for voxel intercept geometry. Group correlation coefficients were then calculated at each surface based vertex point correlating PIB and fMRI. Correlation statistical values are displayed on the surface in color scale, thresholded at $p < 0.01$.