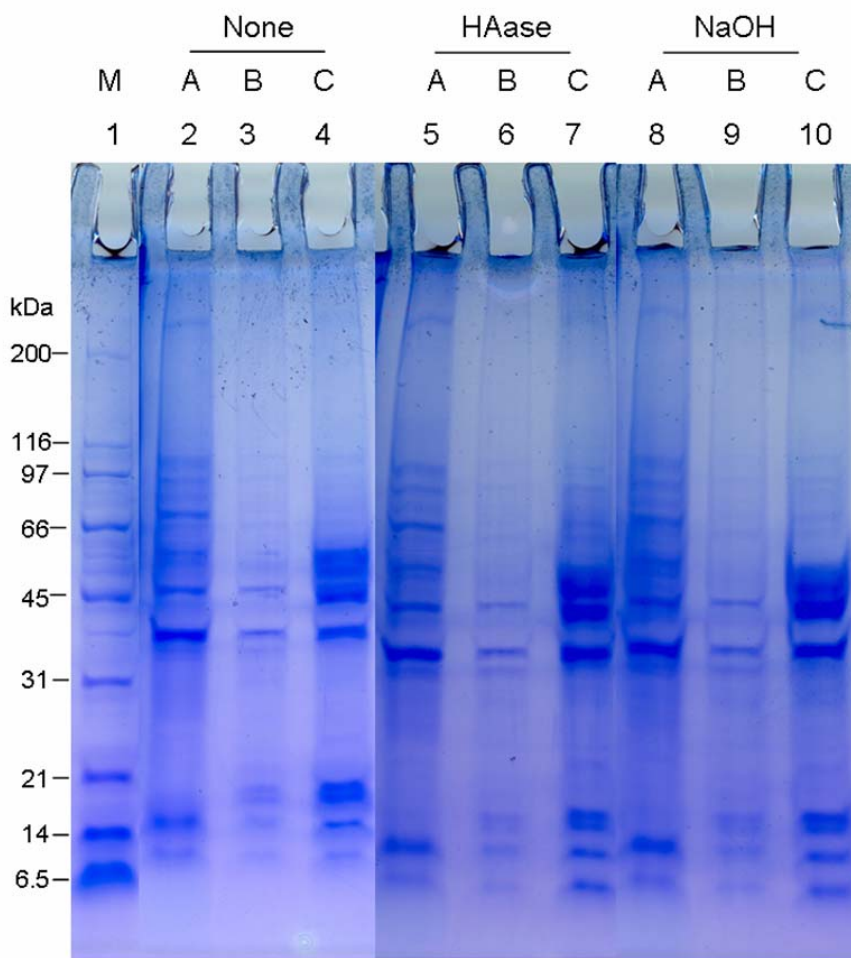
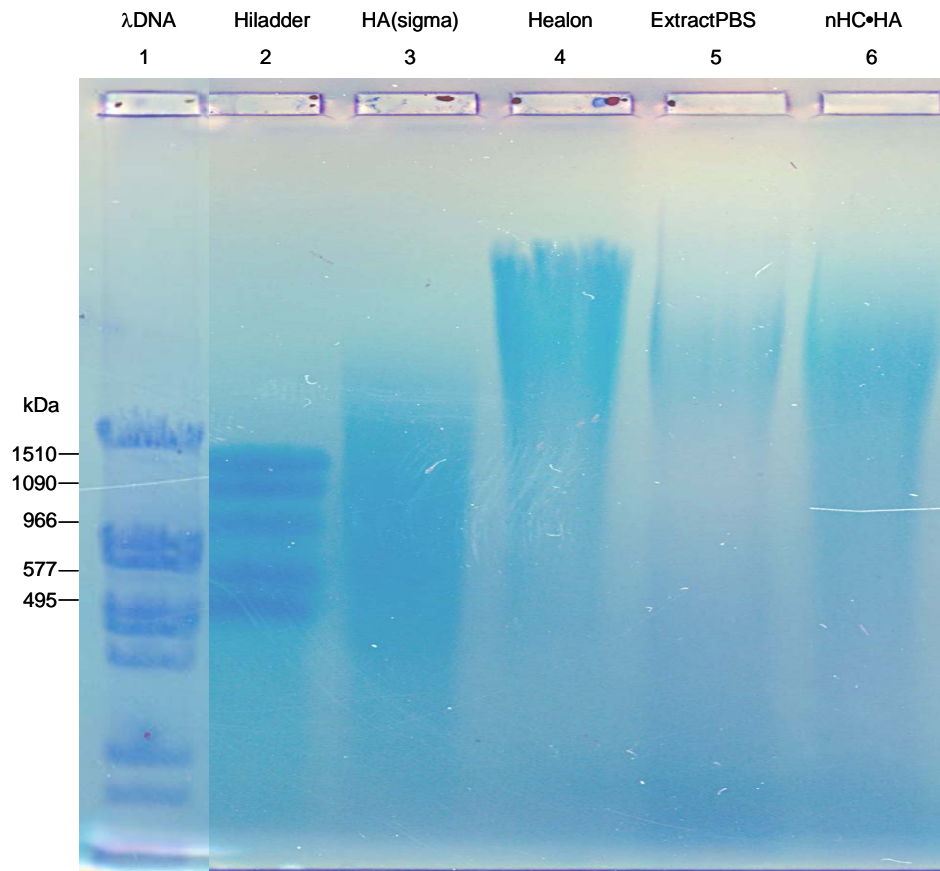


Supplemental Figures



Supplemental Figure S1. Sample Loading Control. AM Extracts A, B, and C with or without HAase (20 units/ml) digestion or 0.05 N NaOH treatment were run on 4-15% SDS-PAGE and stained with Coomassie blue dye.



Supplemental Figure S2. Determination of HA Sizes. Samples were run on 0.5 % agarose gel and stained with All-Stains dye. Lane 1. Lambda DNA/BstE II digested fragments (From the top to the bottom, fragments sizes were 8454, 7242, 6369, 5686, 4822, 4324, 3675, 2323, 1929, 1371, 1264, 702, 224, and 117 base pairs. The three smaller bands (702, 224, and 117 base pairs were run out of the gel); lane 2, Select-HA HiLadder (1510, 1090, 966, 572, and 495-kDa; see labels on left-hand-side); lane 3, HMW HA from Sigma (~ 1000-kDa); lane 4, HMW HA (Healon) from Advanced Medical Optics (~ 4000-kDa), lane 5, Extract PBS; lane 6, purified HC•HA (nHC•HA). HA in both Extract PBS and in HC•HA was estimated to be ~3000-kDa using Select-HA HiLadder and Healon as references.