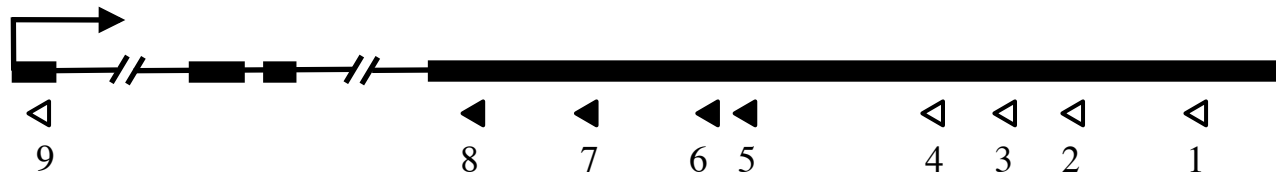
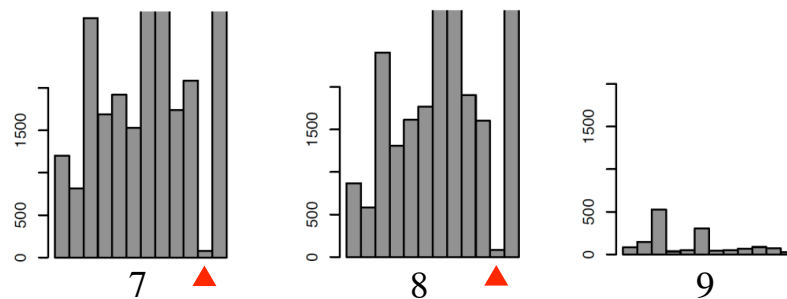
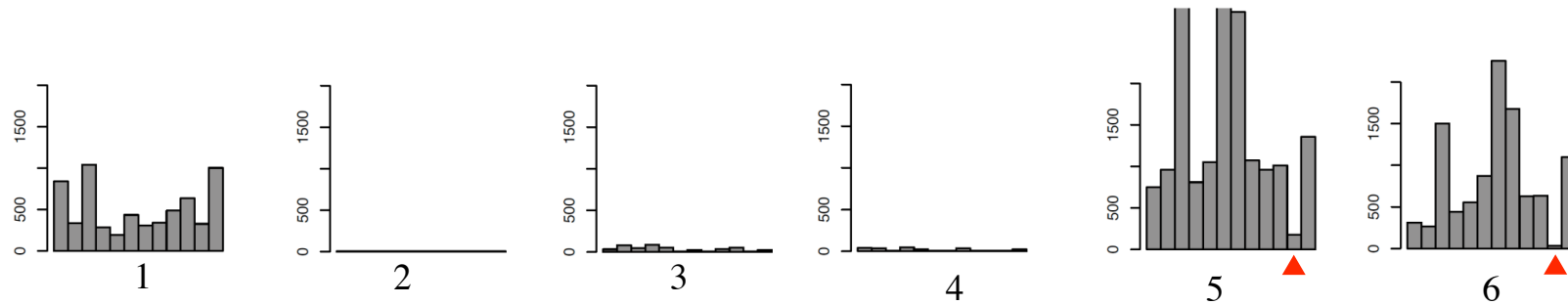


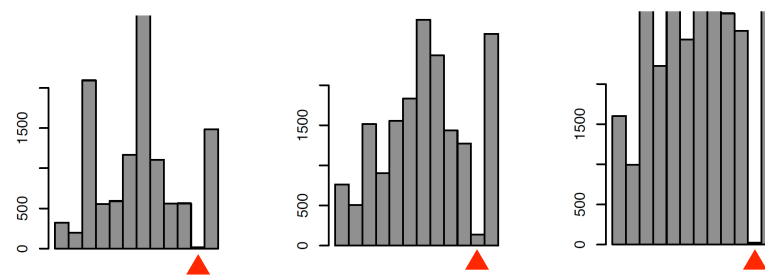
A



B



C



**Additional file 1.**  
**Signal intensities from AFAS probes for *Tsix***

(A) Positions of designed probes for *Tsix*. Filled triangles denote positions of AFAS probes overlapping the exons of *Xist* RNA, whereas open triangles denote positions of those not overlapping the *Xist* exons. Thick bars indicate the exonic regions of *Tsix*, whereas narrow bars indicate the introns. (B) Normalized signal intensities for each probe and (C) that of sense probes for *Xist* RNA. Normalized signals are displayed for 12 adult tissues: brain, heart, intestine, kidney, liver, lung, placenta (10.5 d.p.c.), placenta (13.5 d.p.c.), spleen, stomach, testis, and thymus. Red triangles indicate testis.