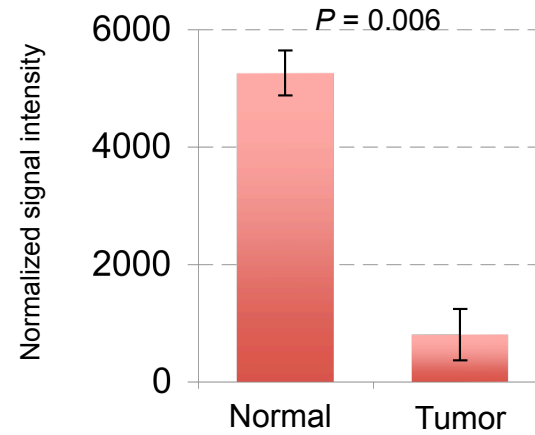
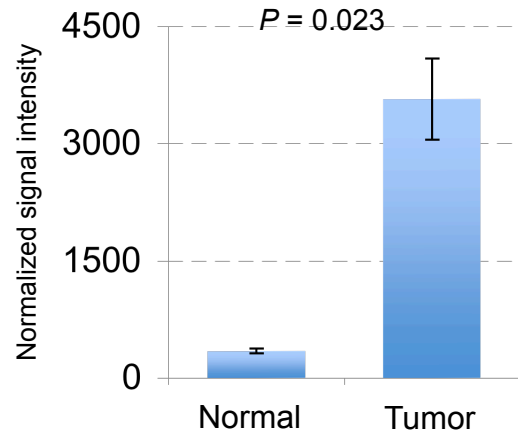
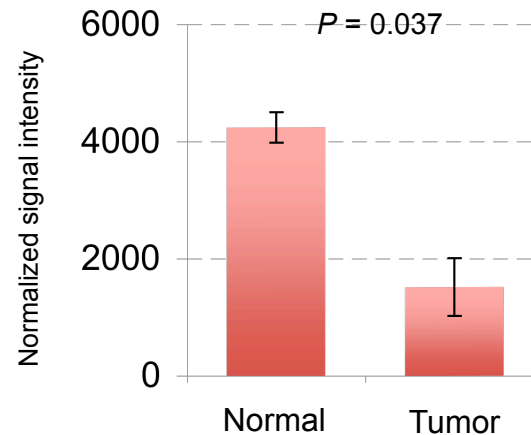
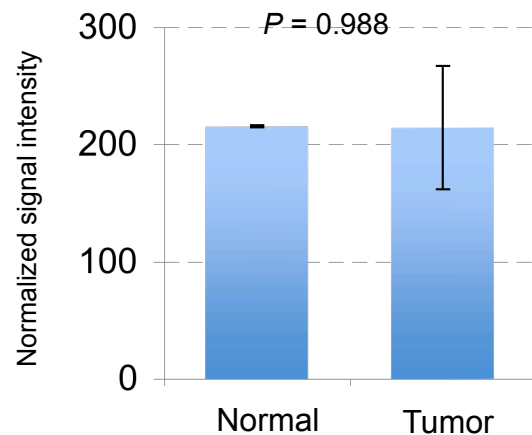


AProgrammed cell death 6 (*Pdcd6*)**B**Dopamine receptor 4 (*Drd4*)**Additional file 7.****Changes in expression of *Pdcd6* and *Drd4***

(A) Signal intensities of *Pdcd6* for which sense (blue bars) and antisense (red bars) transcripts were inversely correlated between normal and tumor cells. (B) Signal intensities for *Drd4*, for which expression of the antisense transcript (red bars) was markedly changed in tumor cells, whereas that of the sense transcript (blue bars) was not.