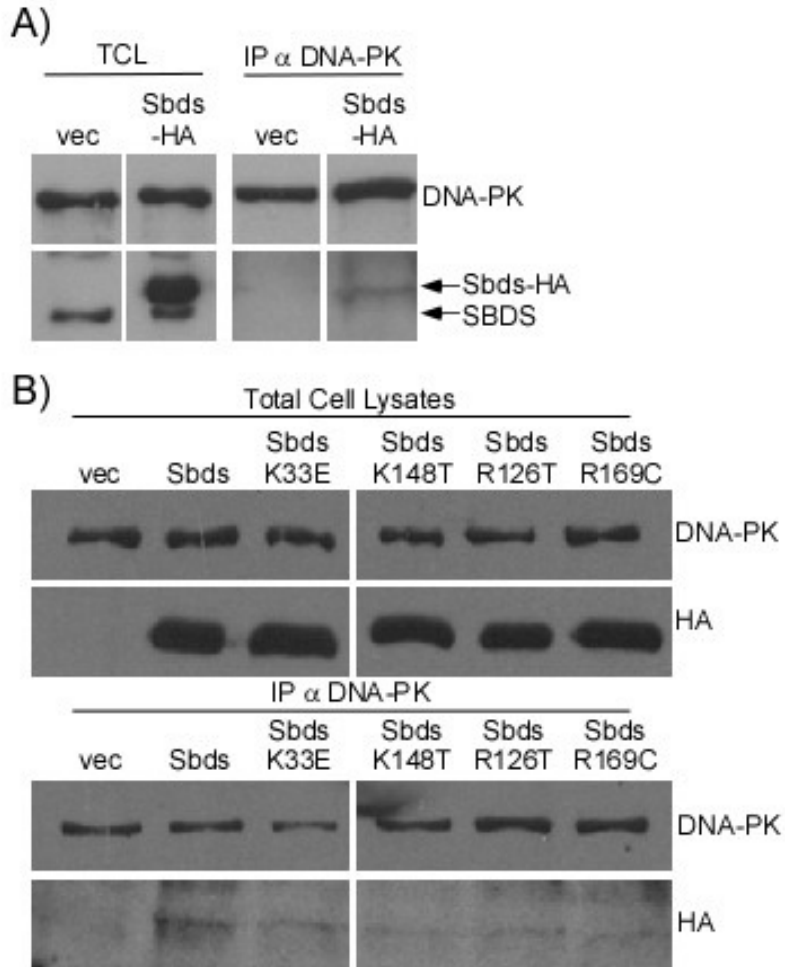


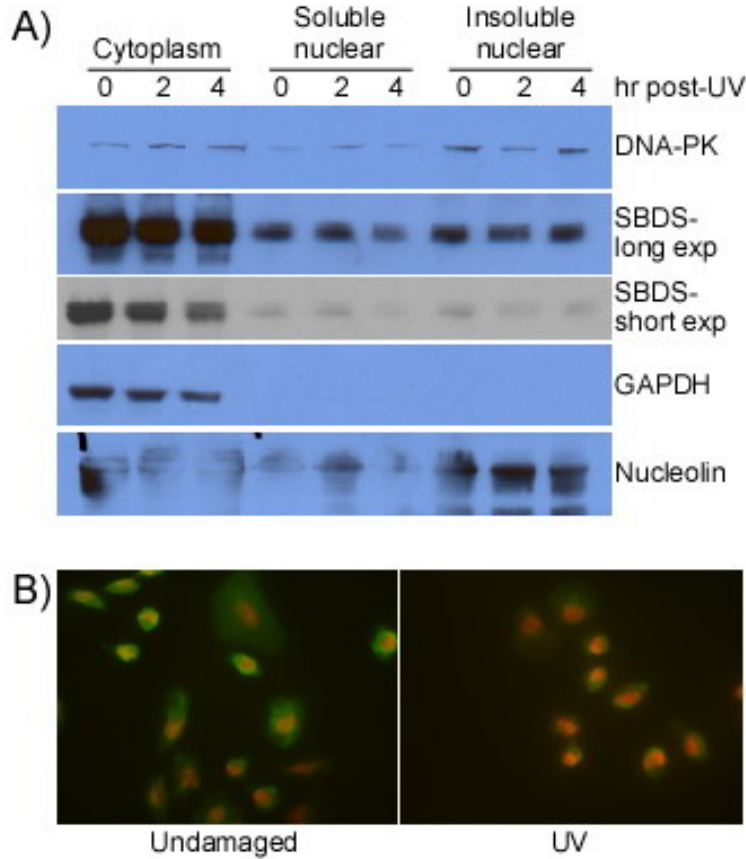
Supplementary Data, Ball *et al.*

Supplementary Fig. 1



Supplementary Figure 1. Characterization of SBDS binding to DNA-PK. **(A)** Co-IP of SBDS with DNA-PK antibody from U2OS cells stably expressing Sbds-HA. Extracts from U2OS cells that had been transfected and selected with vector only (vec) provided a parallel control reaction. **(B)** Co-IP of Sbds-HA variants (Sbds; wild type or with indicated SDS-disease associated missense mutations) with DNA-PK antibody in extracts from transfected HEK293 cells. Extracts from cells that had been transfected with vector only (vec) provided a parallel control reaction.

Supplementary Fig. 2



Supplementary Figure 2. Localization of DNA-PK and SBDS are not altered with UV-irradiation. **(A)** Fractionation of HEK293 cells into cytoplasmic, soluble nuclear and insoluble nuclear components reveal that the majority of SBDS is located in the cytoplasm while DNA-PK is found primarily in both insoluble nuclear and cytoplasmic fractions. Long and short exposures of the chemiluminescence reaction are shown for the SBDS immunoblots as indicated. GAPDH and Nucleolin provided controls for cytoplasmic and insoluble nuclear fractions, respectively. **(B)** Localization by immunofluorescence of U2OS cells stably expressing Sbds-HA indicated nuclear staining of DNA-PK (red) and cytoplasmic and diffuse nuclear staining of SBDS-HA (green).