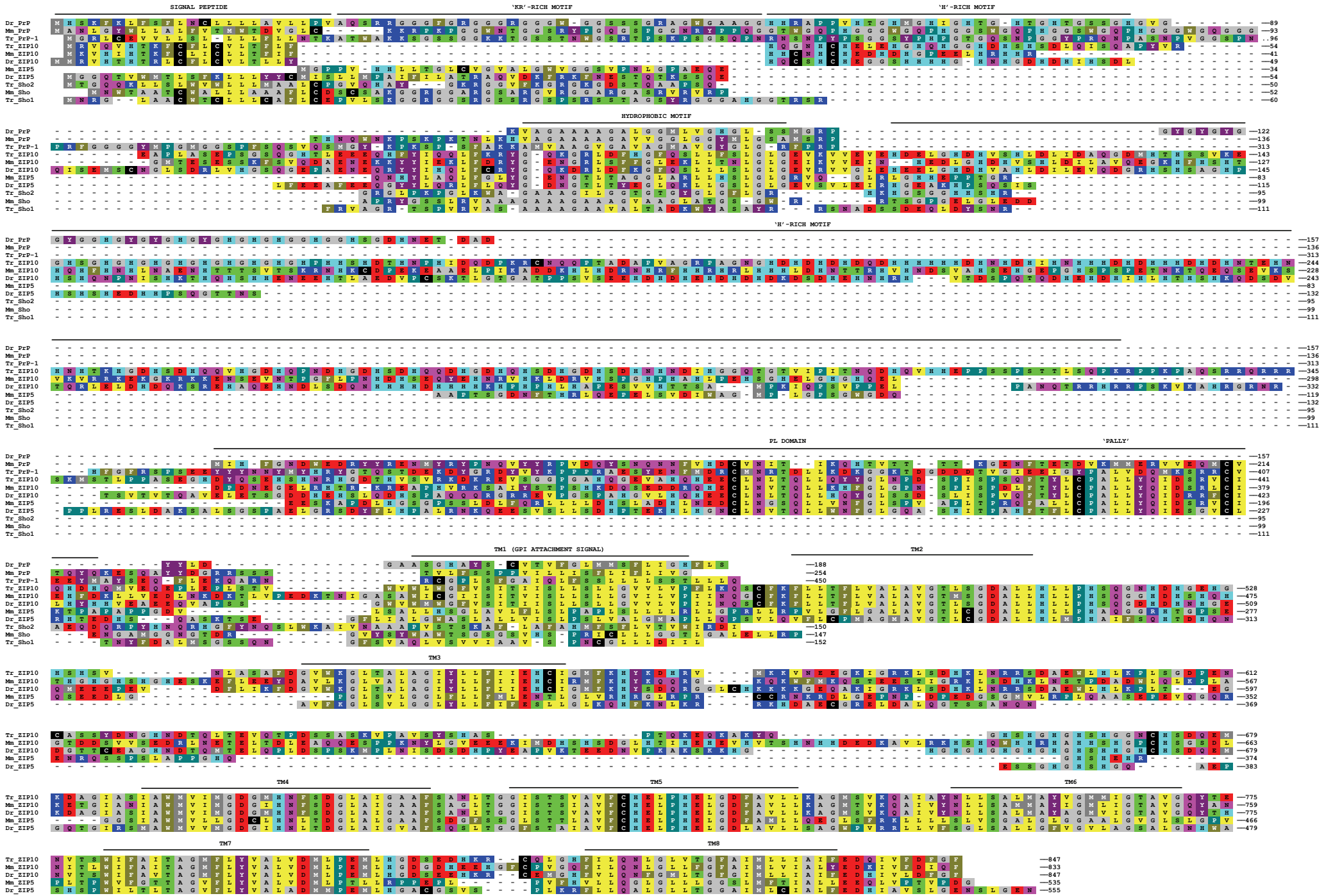


Supplemental Figure 2



* Please note that an alternative alignment of residues 124 – 136 of Mm_PeP with residues 285 – 297 of Mm_ZIP10 has been presented in Figure 1A since for the structural threading analysis, it was preferred to work with a continuous stretch of primary structure. In this alignment, the emphasis is on evolutionary descent and therefore it was decided that this short sequence segment was best aligned from a phylogenetic perspective.