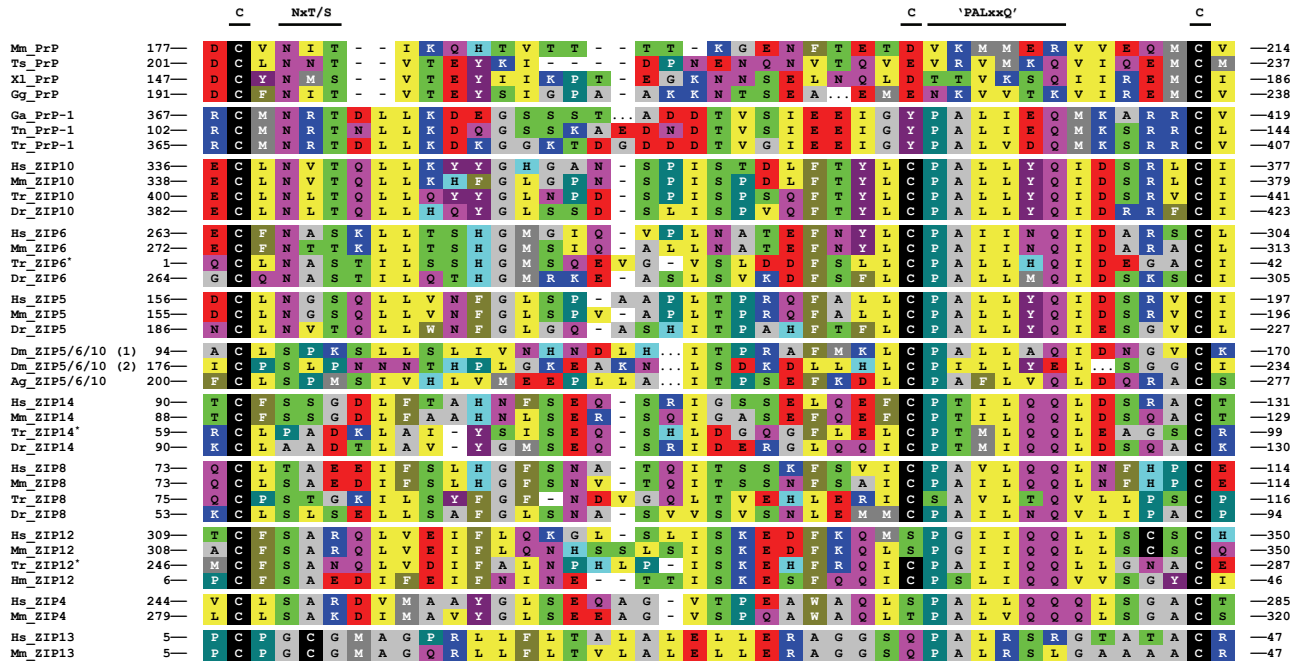


# Supplemental Figure 3



\* Complete sequences not available.

- Ag → *Anopheles gambiae* (African malaria mosquito)
- Dm → *Drosophila melanogaster* (fruit fly)
- Dr → *Danio rerio* (zebrafish)
- Ga → *Gasterosteus aculeatus* (three-spined stickleback)
- Gg → *Gallus gallus* (chicken)
- Hm → *Hydra magnipapillata* (hydra)
- Hs → *Homo sapiens* (human)
- Mm → *Mus musculus* (house mouse)
- Tn → *Tetraodon nigroviridis* (spotted green pufferfish)
- Tr → *Takifugu rubripes* (Japanese pufferfish)
- Ts → *Trachemys scripta* (red-eared slider turtle)
- XI → *Xenopus laevis* (African clawed frog)