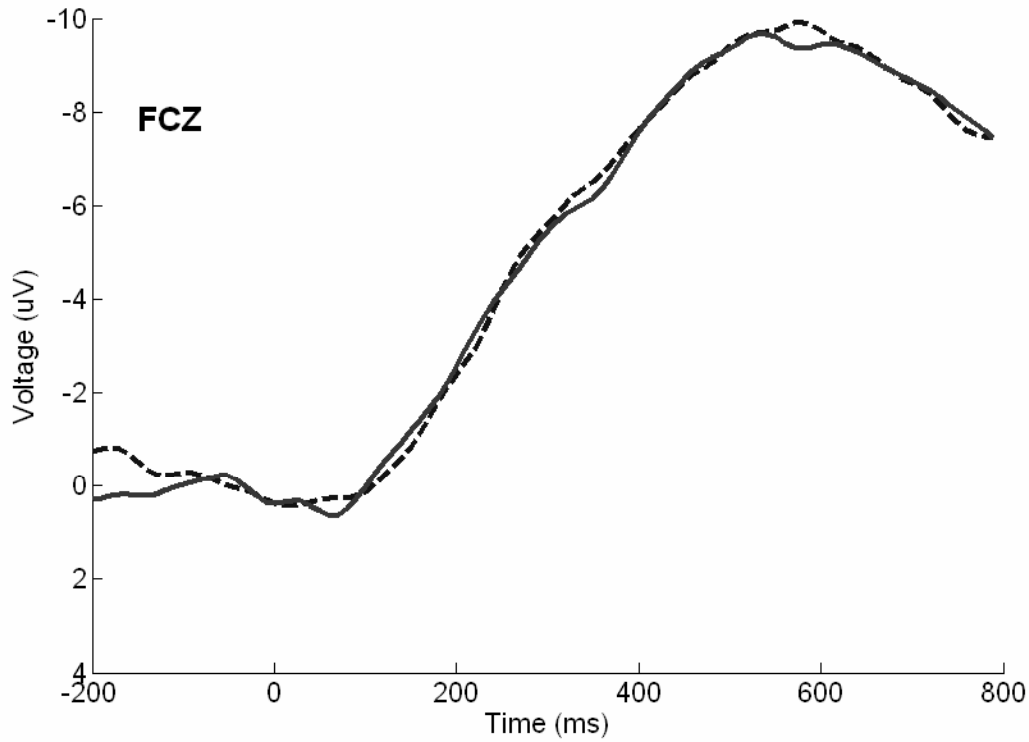
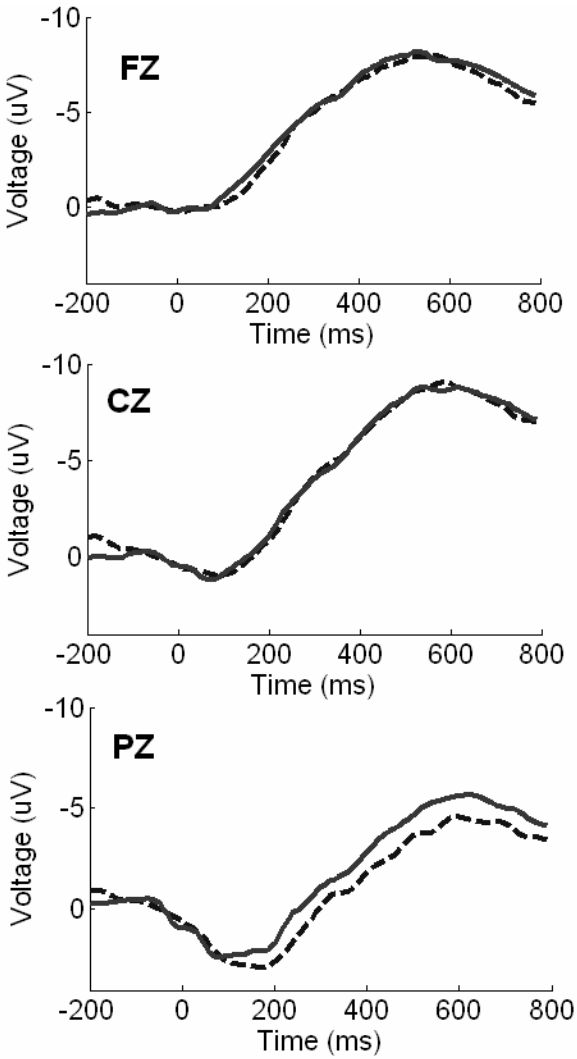


RT Timelocked using PRESTIM baseline



--- Small Errors
— Large Errors

Supplemental Figure Legend

A.1) Large and small error trial waveforms time-locked to reaction time with a pre-stimulus baseline at selected central electrodes pooled across each stage, with activity at FCz highlighted. A 2 (error magnitude, large vs. small) x 3 (time window: 200-400 ms, 400-600 ms, 600-800 ms) RM ANOVA failed to find a main effect difference in error magnitude ($F_{(1, 37)} = .917, p > .30, \eta^2_p = .024$) or an error magnitude x time window interaction ($F_{(2, 74)} = .040, p > .90, \eta^2_p = .001$).