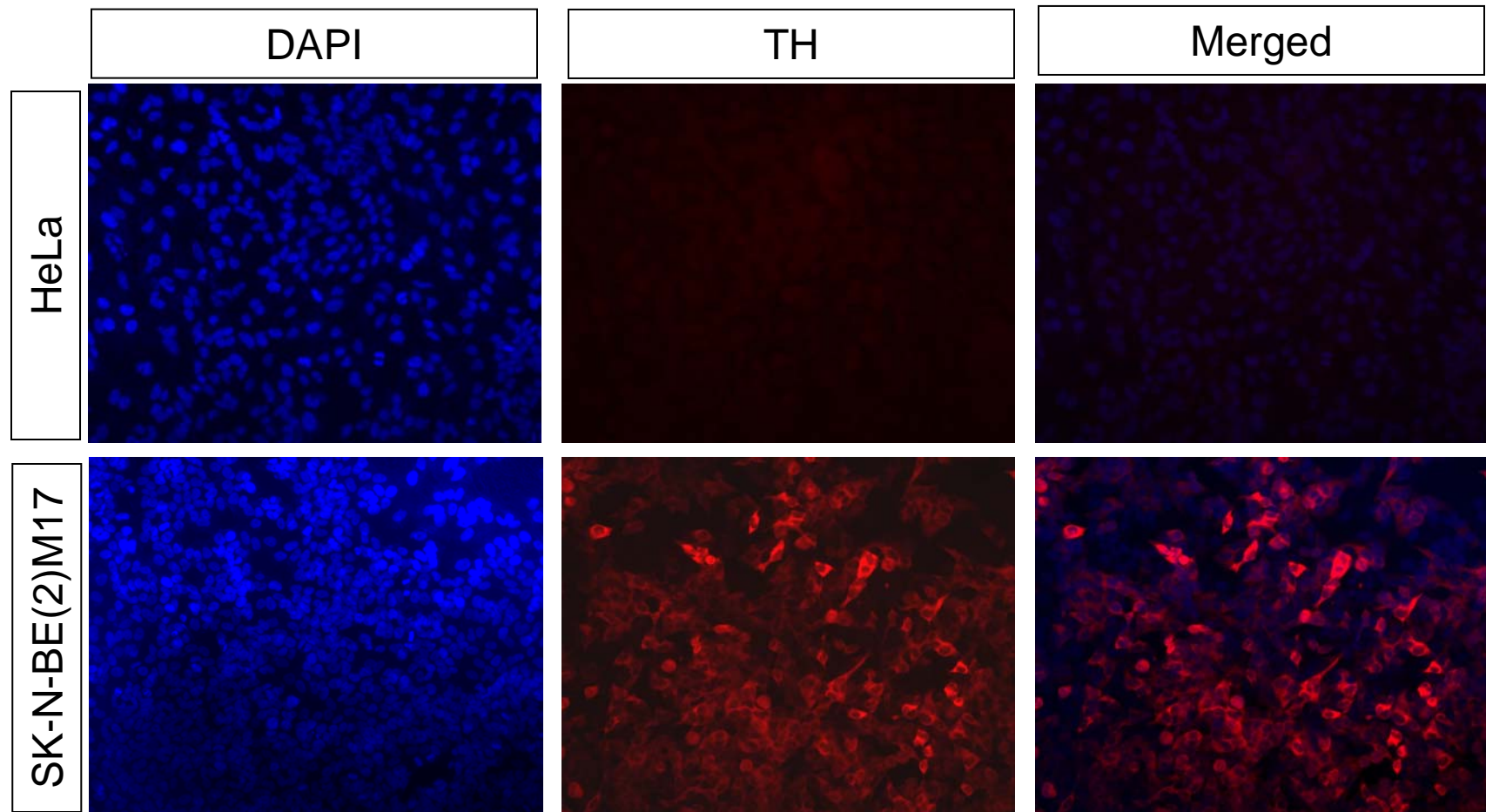


Supplementary Figure 1



HeLa (non-CA cells) and SK-N-BE(2)M17 (CA neuron cells) were stained anti-TH ((Pel-Freeze, Rodgers, AR) antibody and DAPI. Merged images of TH and DAPI were shown. More than 95% SK-N-BE(2)M17 cells showed TH positive signal, while no TH positive signal was found in HeLa cells