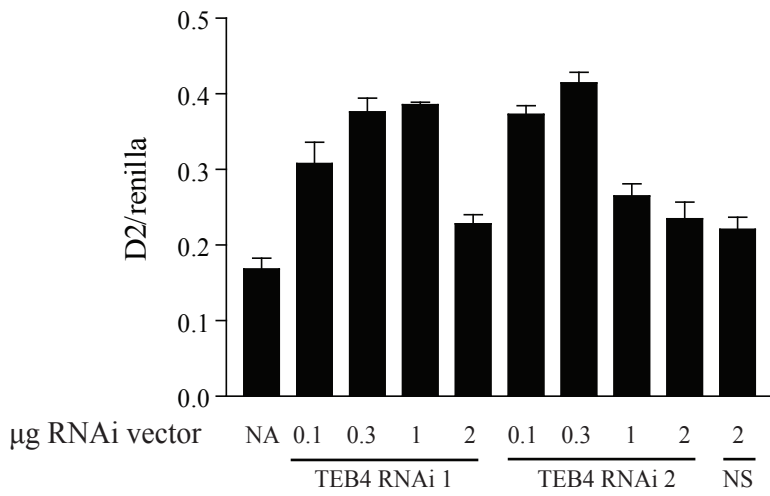
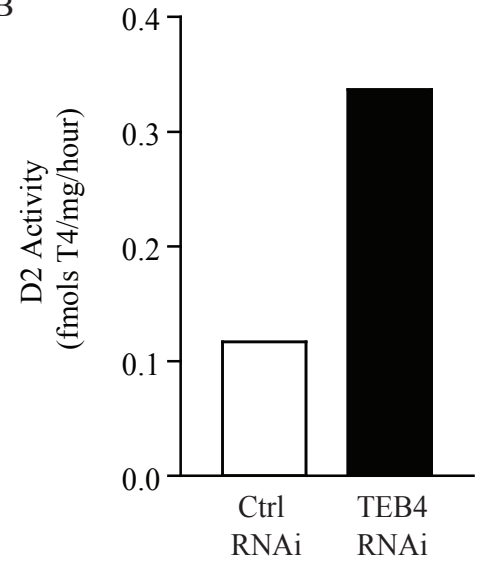


A



B



**Supplemental figure 1.** (A) Effects of increasing amounts of TEB4 RNAi vectors. 0.5 ug of D2 was co-transfected with increasing amounts of TEB4 RNAi, as indicated, and 0.5 ug of vector encoding for luciferase. Two different shRNAs were tested (RNAi 1 and RNAi 2). (B) MSTO-211 cells were transfected as described in material and methods section, with OpenBioSystem's shRNA clones targeted against TEB4 or a non-specific sequence (V2LHS\_12421 and V2LHS\_199262, respectively). 48 hours after transfection, cells were flow-sorted and GFP positive cells and were then assayed for D2 activity. Values are mean  $\pm$  SEM, n=3 in (A) and n=1 in (B).