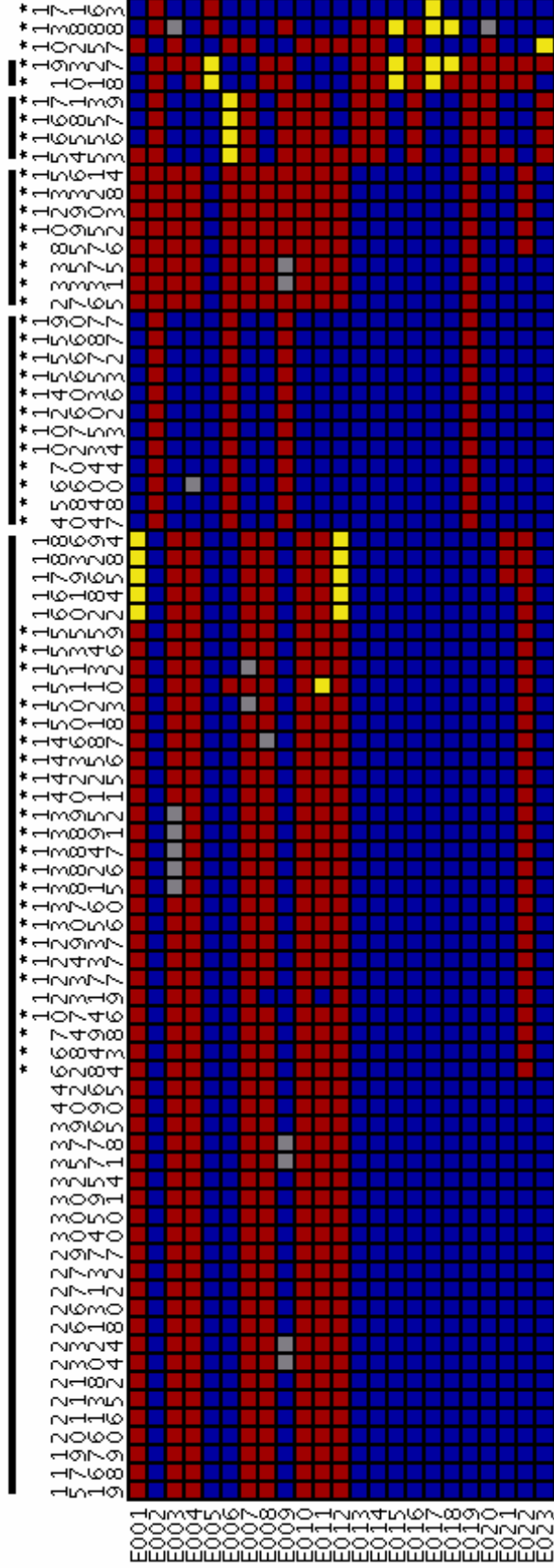


Supplemental Figure 1: Visual genotype of IL1RN MAF>5% SNPs from SeattleSNPs



Genotypes for each individual (rows: E001 through E023 = 23 European-Americans) at each IL1RN SNP (columns: numbered based on SeattleSNPs sequence) are coded blue for common homozygote, red for heterozygote, and yellow for rare homozygote. SNPs are clustered according to similarity of linkage disequilibrium (LD) patterns, based on the on the pairwise LD measure r^2 .