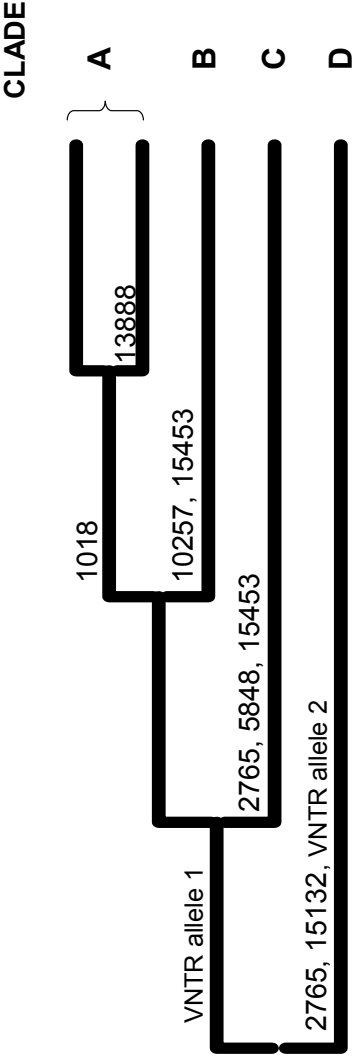


Supplemental Figure 2: Haplotype structure of the *IL1RN* gene



Evolutionary haplotype structure of the *IL1RN* gene derived from SeattleSNPs genomic re-sequencing data. The 7 *IL1RN* tagSNPs typed in CARDIA and CHS are superimposed on the haplotype branches, and define 4 major haplo-groups or clades in the European-American population. Clades A, B, and C are associated with allele 1 of the *IL1RN* 86 bp VNTR polymorphism. Clade A is tagged by *IL1RN* 1018 and 13888. Clade D, tagged by the minor alleles of *IL1RN* 2765 and 15132, is tightly linked with allele 2 of the 86 bp VNTR polymorphism.