

Supporting Information

Largamides A–C, Tiglic Acid-Containing Cyclodepsipeptides with Elastase-Inhibitory Activity from the Marine Cyanobacterium *Lyngbya confervoides*

Susan Matthew¹, Valerie J. Paul², Hendrik Luesch¹

Affiliation

¹ Department of Medicinal Chemistry, University of Florida, Gainesville, Florida 32610, USA

² Smithsonian Marine Station, 701 Seaway Drive, Fort Pierce, Florida 34949, USA

Correspondence

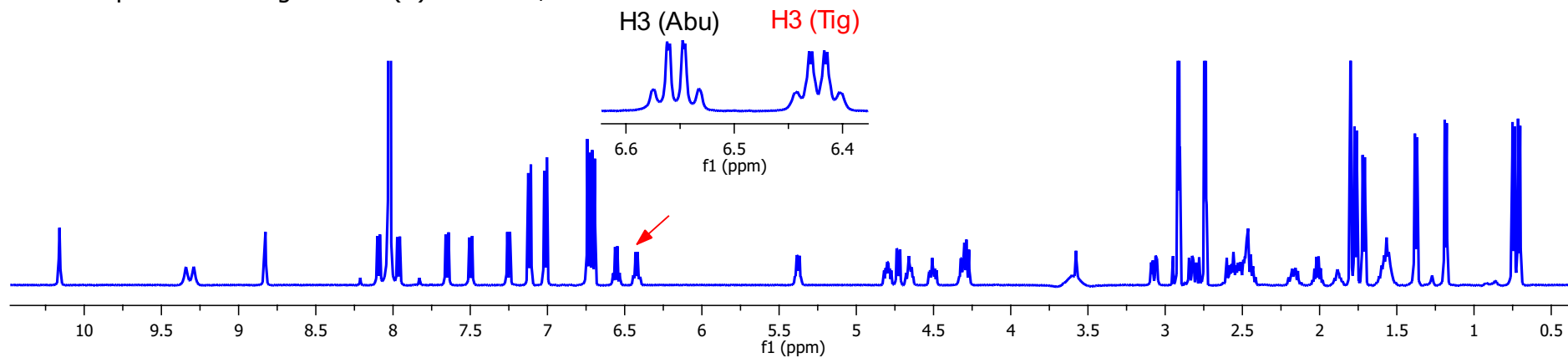
Prof. Dr. Hendrik Luesch, Department of Medicinal Chemistry, University of Florida,
1600 SW Archer Road, Gainesville, Florida 32610, USA. Email: luesch@cop.ufl.edu
Phone: +1 (352) 273-7738, Fax: + 1 (352) 273-7741

Contents	Page Number
¹ H NMR Spectrum of Largamide B (2) in different NMR solvents	S2
¹ H NMR Spectrum of Largamide A (1) in DMF- <i>d</i> ₇	S3
¹³ C NMR Spectrum of Largamide A (1) in DMF- <i>d</i> ₇	S4
¹ H NMR Spectrum of Largamide B (2) in DMF- <i>d</i> ₇	S5
¹³ C NMR Spectrum of Largamide B (2) in DMF- <i>d</i> ₇	S6
1D TOCSY Spectra of Largamide B (2) in DMF- <i>d</i> ₇	S7
¹ H NMR Spectrum of Largamide C (3) in DMF- <i>d</i> ₇	S8
¹³ C NMR Spectrum of Largamide C (3) in DMF- <i>d</i> ₇	S9
1D TOCSY Spectra of Largamide C (3) in DMF- <i>d</i> ₇	S10

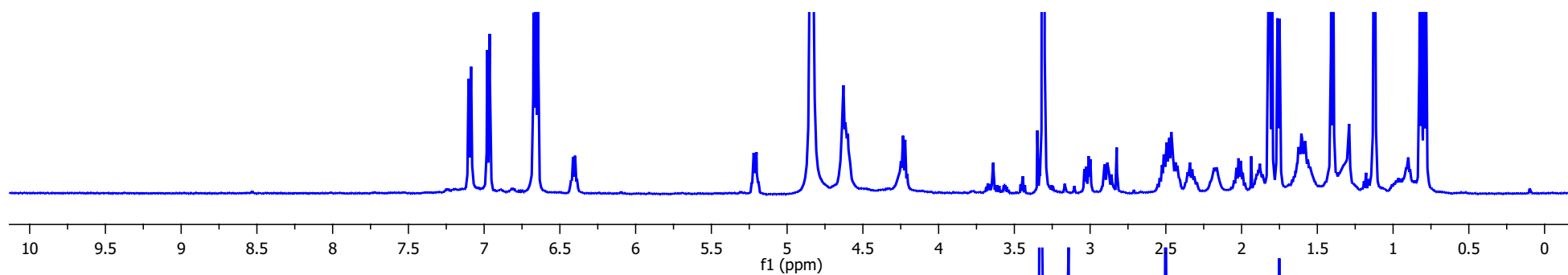
^1H NMR spectra of Largamide B (**2**) in different solvents

S2

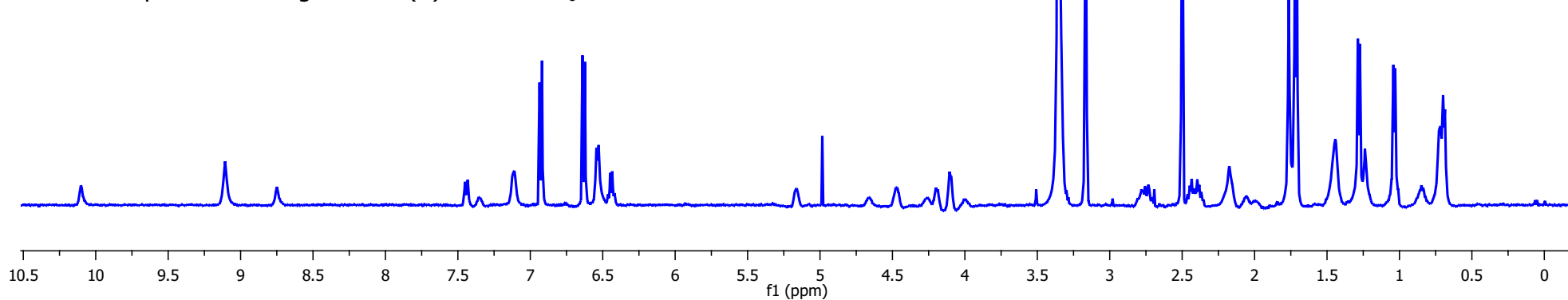
^1H NMR spectrum of largamide B (**2**) in $\text{DMF-}d_7$



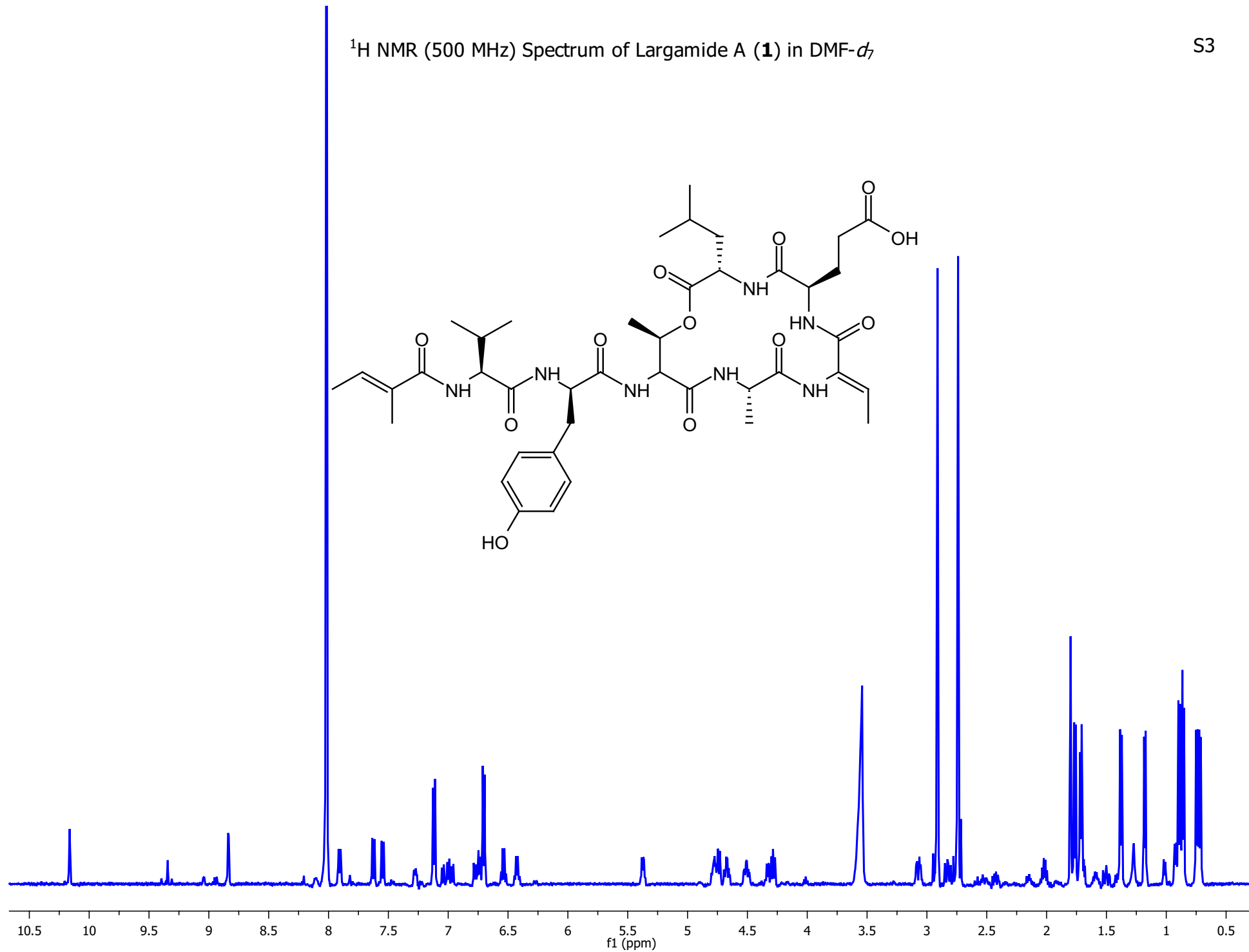
^1H NMR spectrum of largamide B (**2**) in CD_3OD

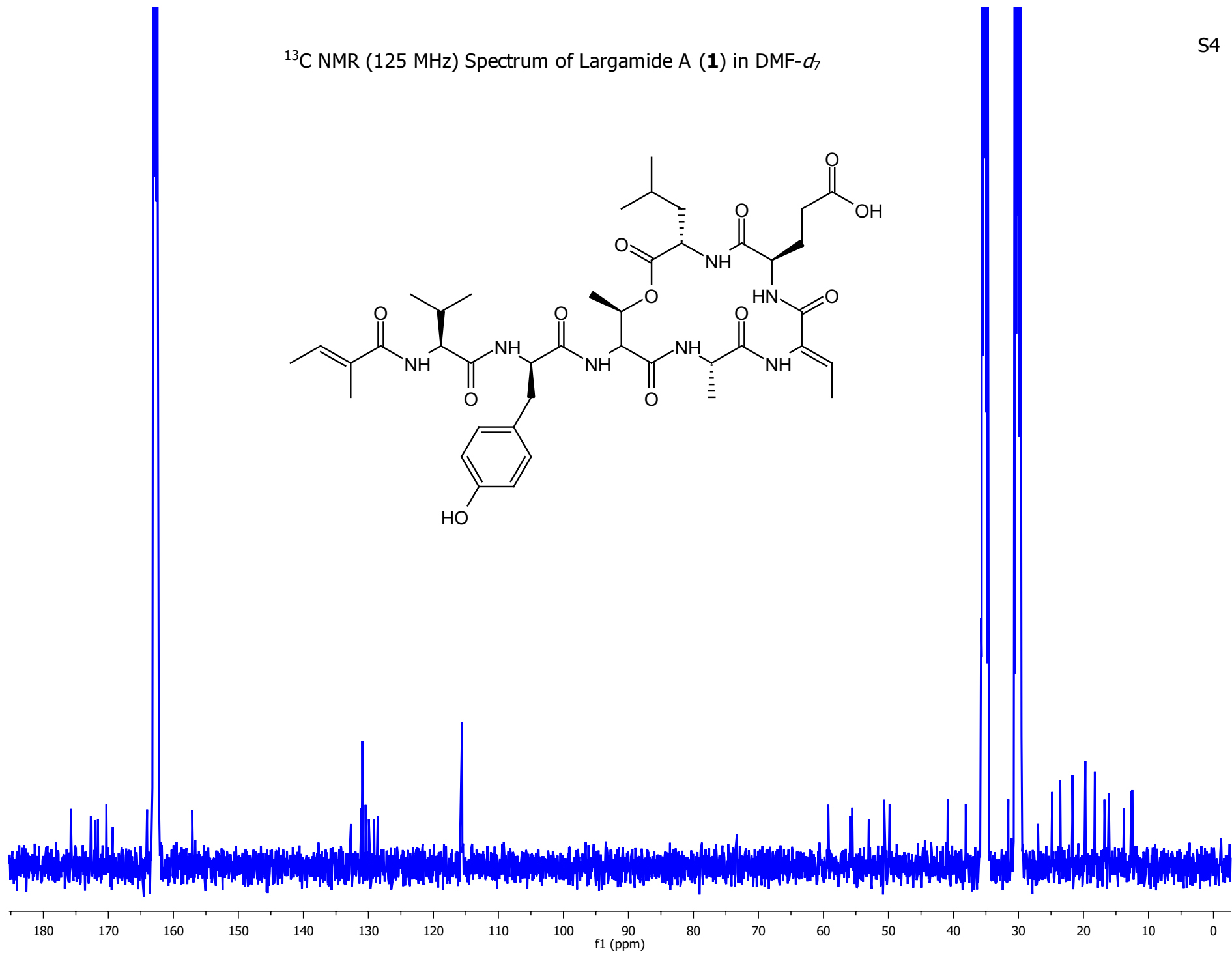
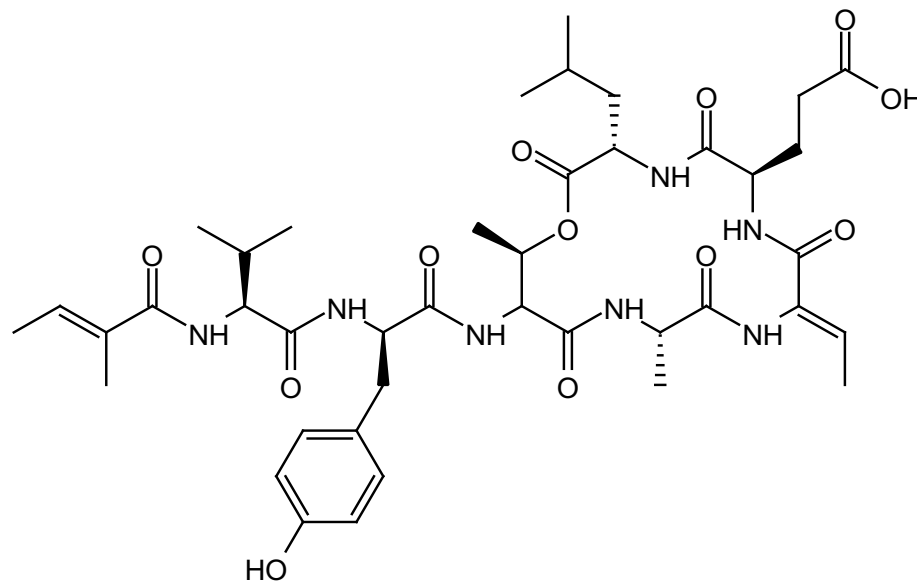


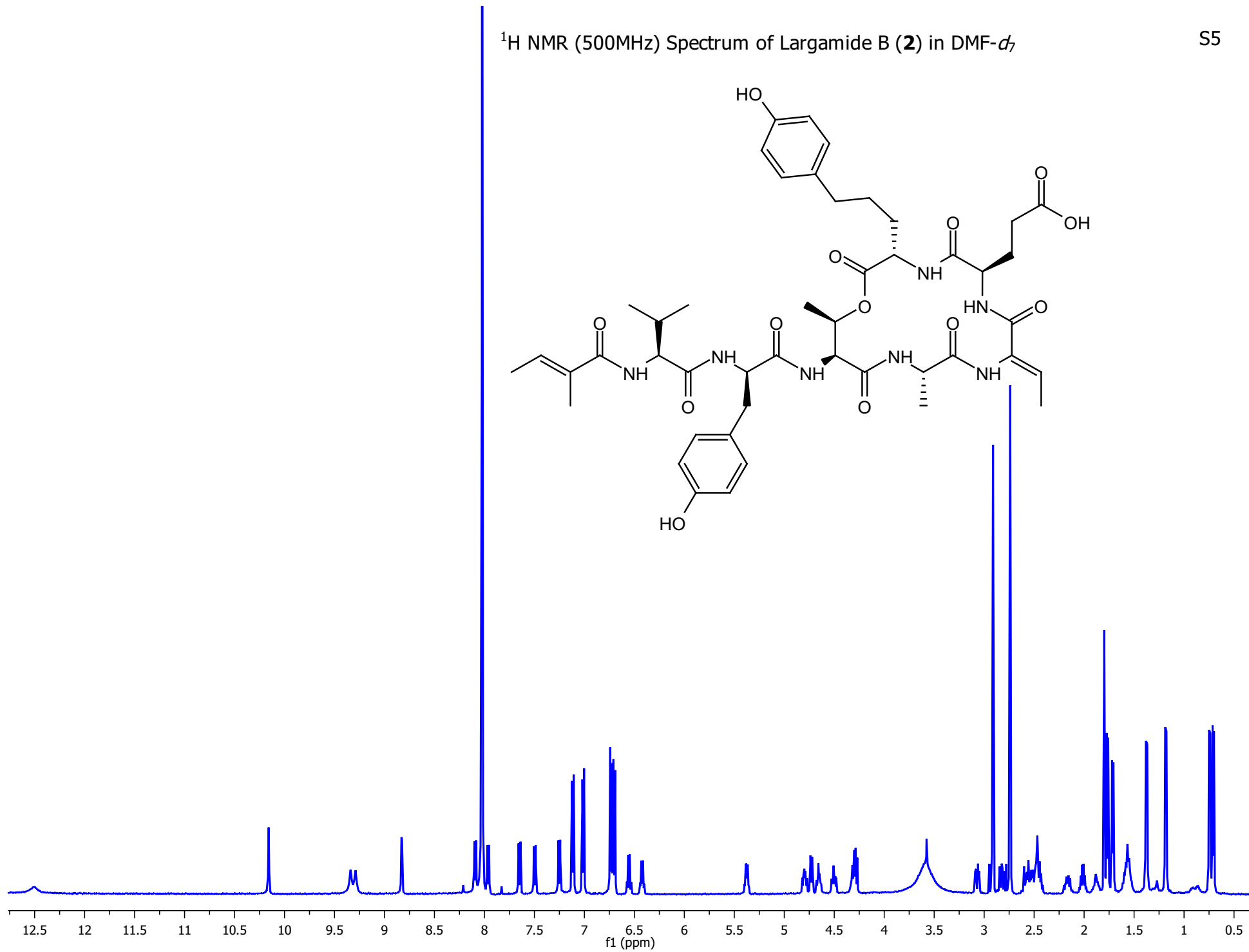
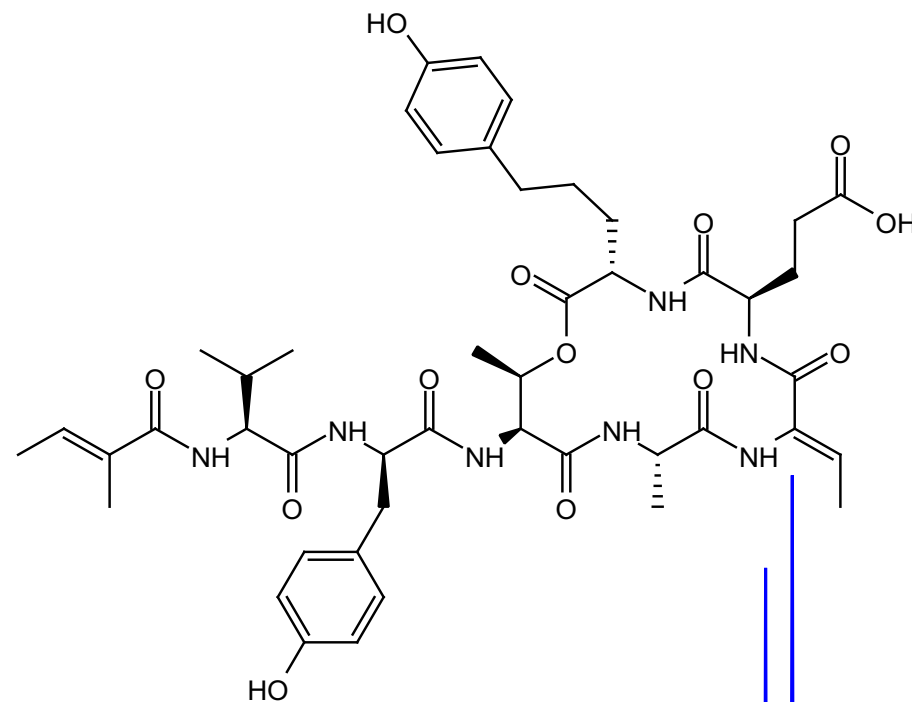
^1H NMR spectrum of largamide B (**2**) in $\text{DMSO-}d_6$



^1H NMR (500 MHz) Spectrum of Largamide A (**1**) in $\text{DMF-}d_7$

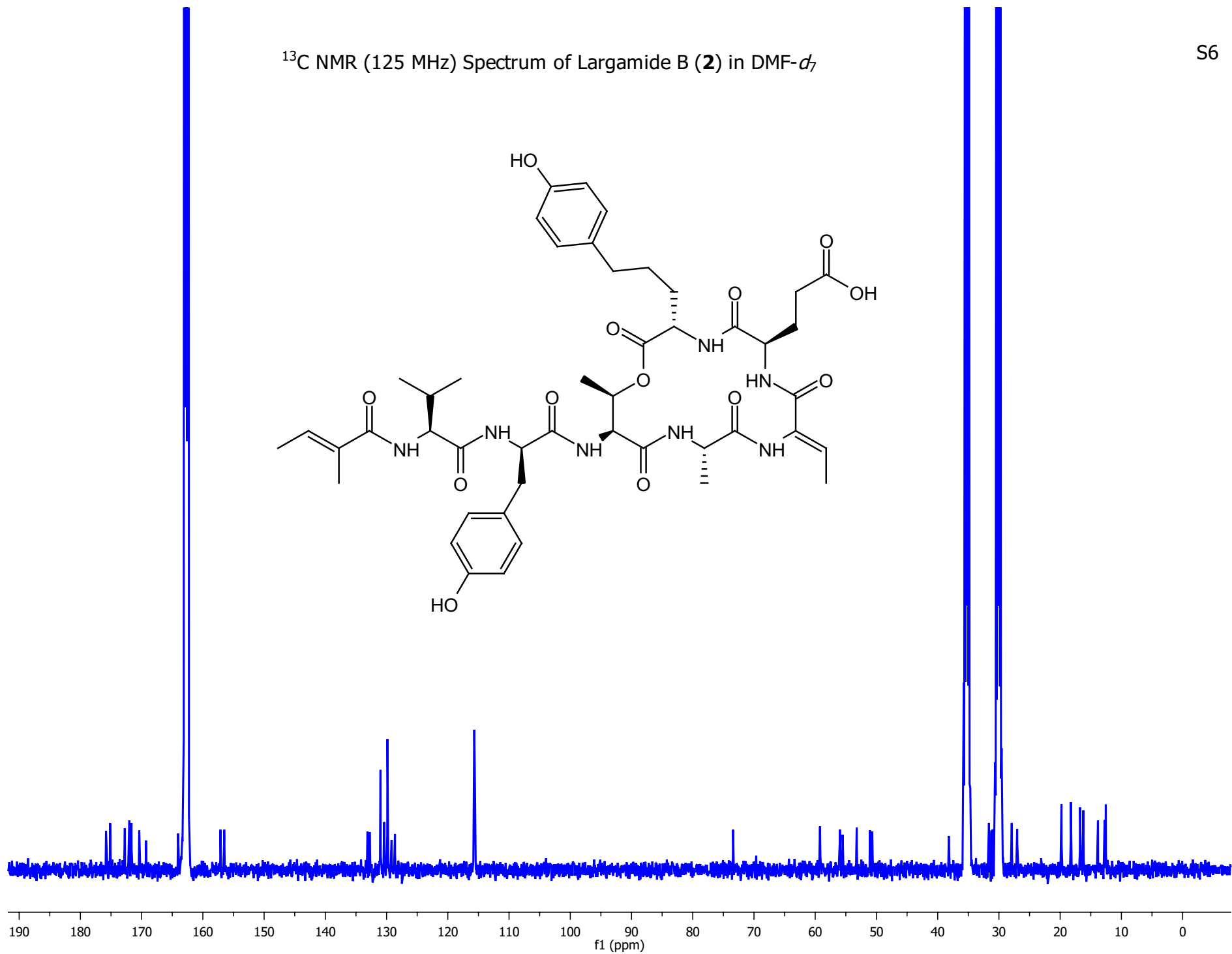
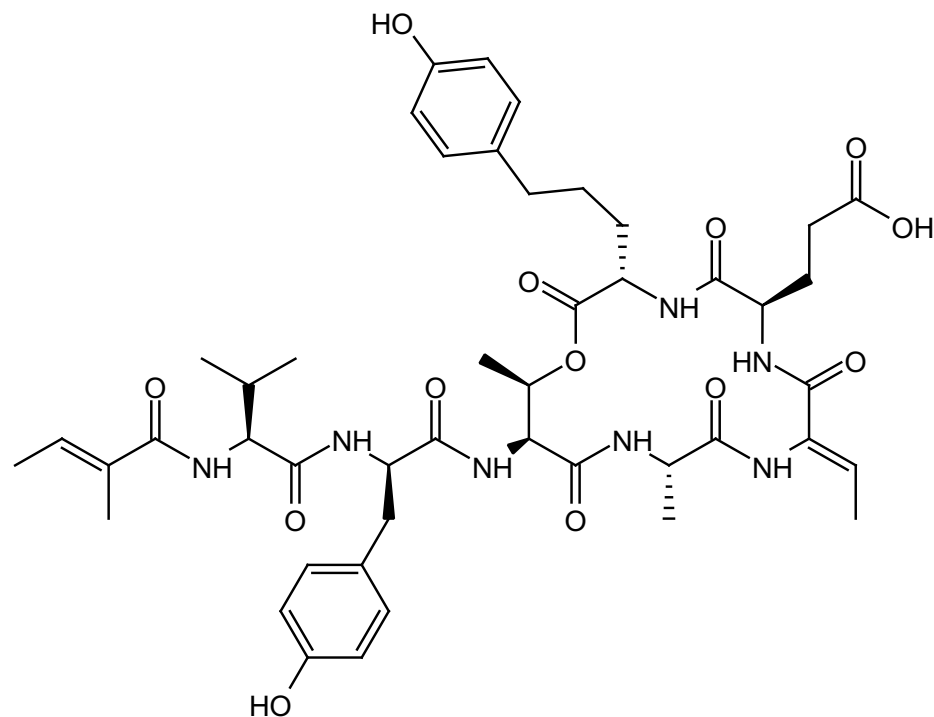


^{13}C NMR (125 MHz) Spectrum of Largamide A (**1**) in $\text{DMF-}d_7$ 

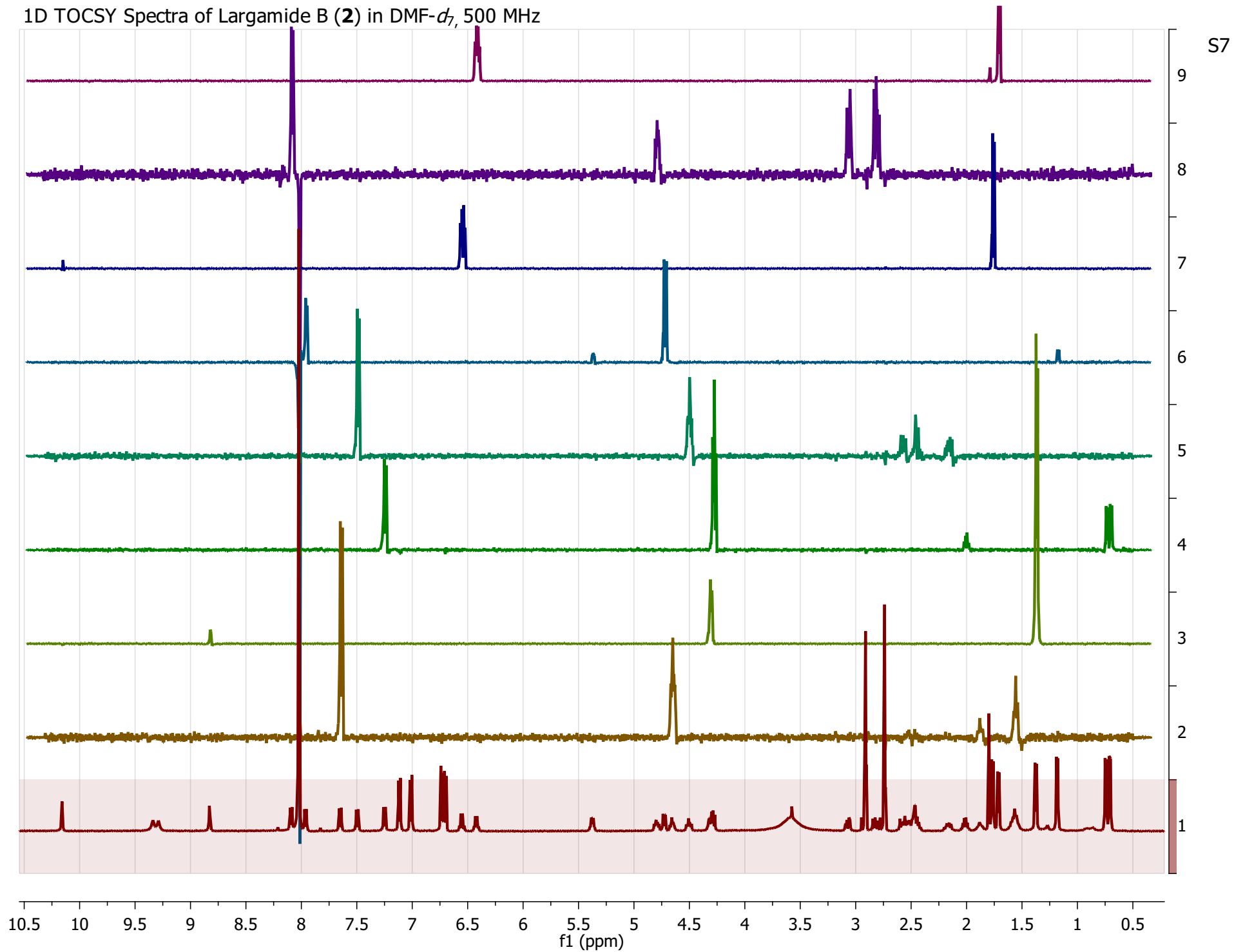


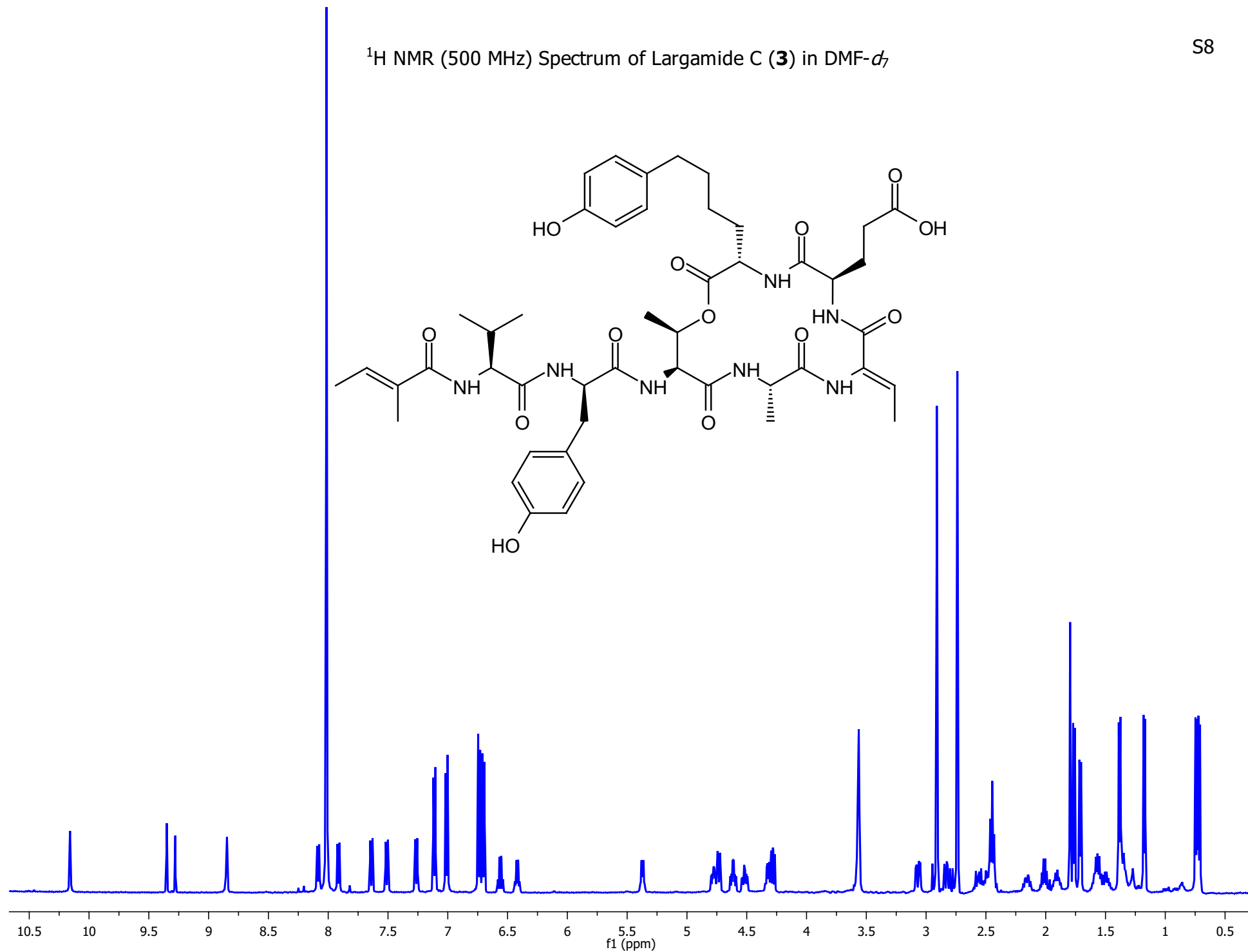
^{13}C NMR (125 MHz) Spectrum of Largamide B (**2**) in $\text{DMF-}d_7$

S6



1D TOCSY Spectra of Largamide B (**2**) in DMF-*d*₇, 500 MHz



^1H NMR (500 MHz) Spectrum of Largamide C (**3**) in $\text{DMF-}d_7$ 

1D TOCSY Spectra of Largamide C (**3**) in DMF-*d*₇, 500 MHz

