

Supporting Information

DeGiorgio et al. 10.1073/pnas.0903341106

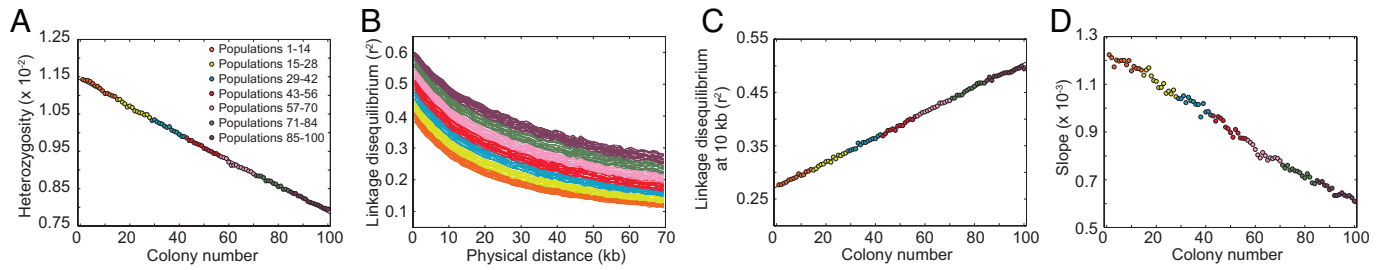


Fig. S1. Patterns of heterozygosity, LD, and the ancestral allele frequency spectrum in simulations of the serial founder model with symmetric migration at rate $M = 1$ between neighboring populations. All other parameters are the same as in Fig. 3.

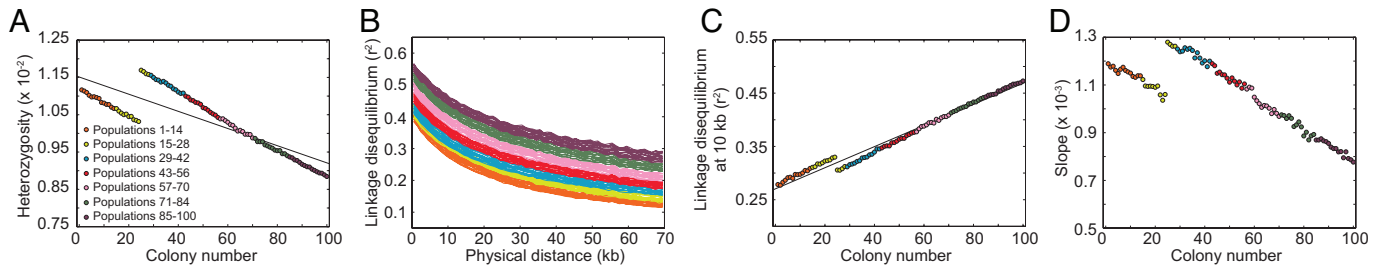


Fig. S2. Patterns of heterozygosity, LD, and the ancestral allele frequency spectrum in simulations of the serial founder model with archaic admixture. The model incorporates archaic admixture with an admixture fraction $\gamma = 0.1$ of population 25 deriving from the archaic population. All other parameters are the same as in Fig. 3.

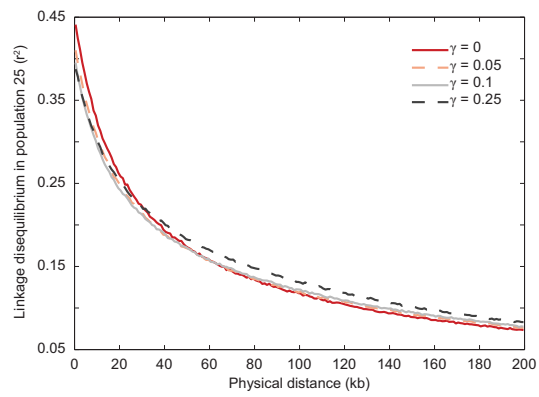


Fig. S3. LD (r^2) as a function of physical distance for population 25 in the serial founder model with archaic admixture at rate γ . The simulation proceeded in the same way as in Fig. 5, except that longer regions were simulated (1 Mb).

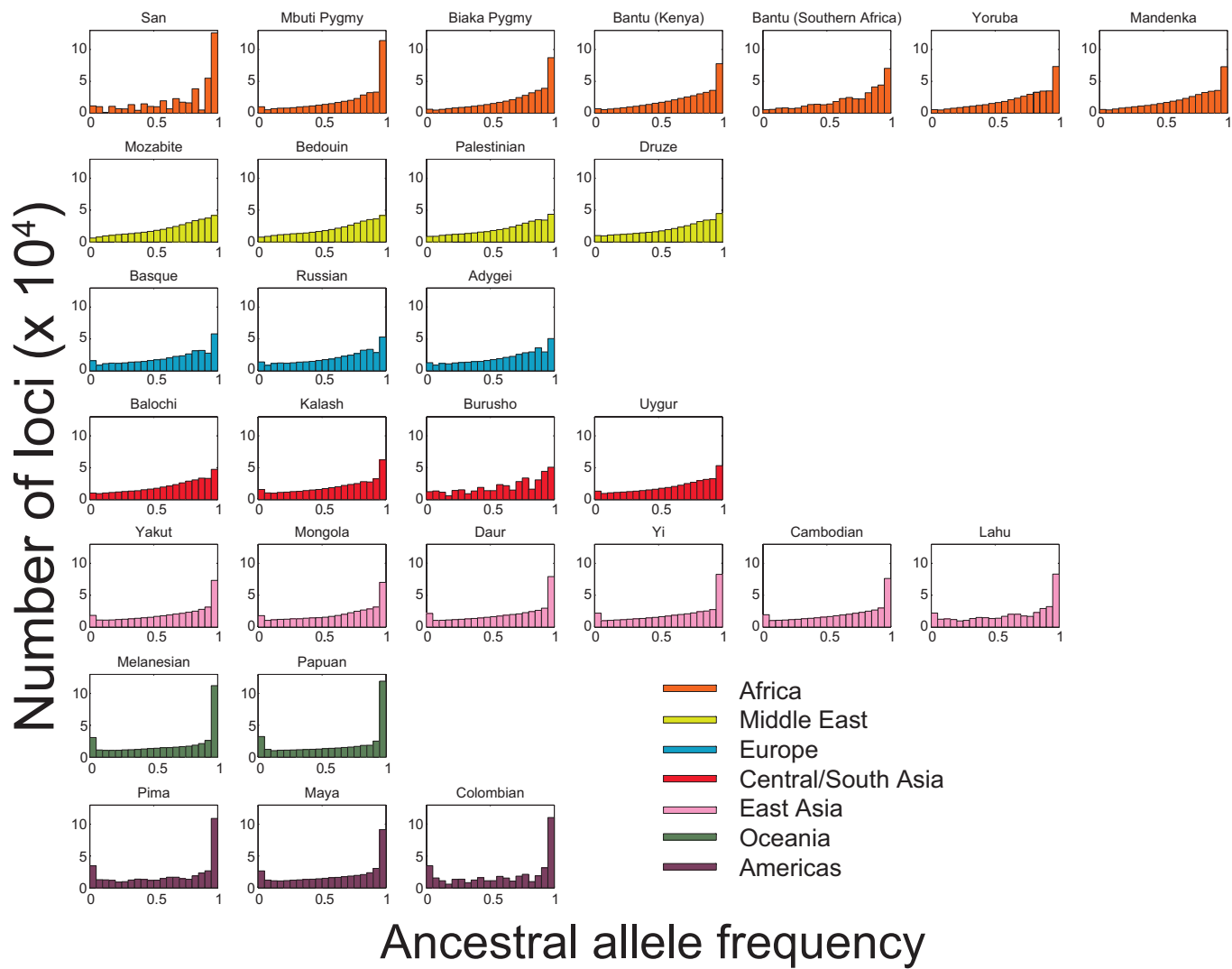


Fig. 54. Ancestral allele frequency spectra calculated using a resampling technique applied to the data of Jakobsson M, et al. (2008) *Nature* 451:998–1003.

Other Supporting Information Files

[SI Appendix](#)