

gi|129279126|gb|ABO28970.1| *trans*-sialidase-like protein [*Trypanosoma cruzi*] K.AHTVLDTTDGTNR.V

M+H=1400.676392

DeltaM=1.44109

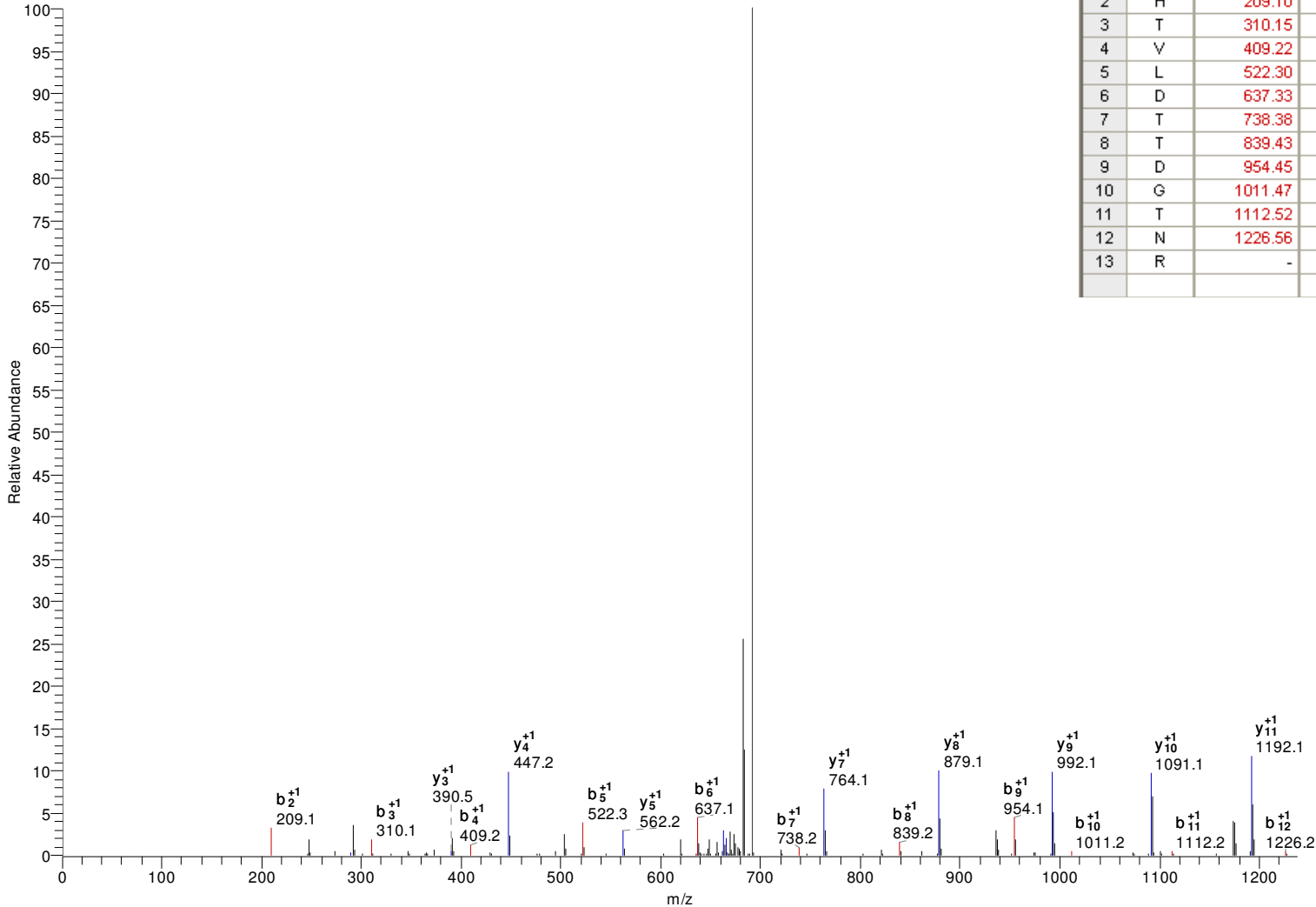
z=2

P(pep)=2.68E-08

Xcorr=3.93

DCn=0.53

#2167-2167 NL: 2.37E3



	AA	B	Y	
		✓	✓	
1	A	72.04	-	13
2	H	209.10	1329.64	12
3	T	310.15	1192.58	11
4	V	409.22	1091.53	10
5	L	522.30	992.46	9
6	D	637.33	879.38	8
7	T	738.38	764.35	7
8	T	839.43	663.31	6
9	D	954.45	562.26	5
10	G	1011.47	447.23	4
11	T	1112.52	390.21	3
12	N	1226.56	289.16	2
13	R	-	175.12	1

gi|70884356|gb|EAN97220.1| cytochrome b5, putative [*Trypanosoma cruzi*]

K.YYIGELDPNDAEK.L
Xcorr=2.65

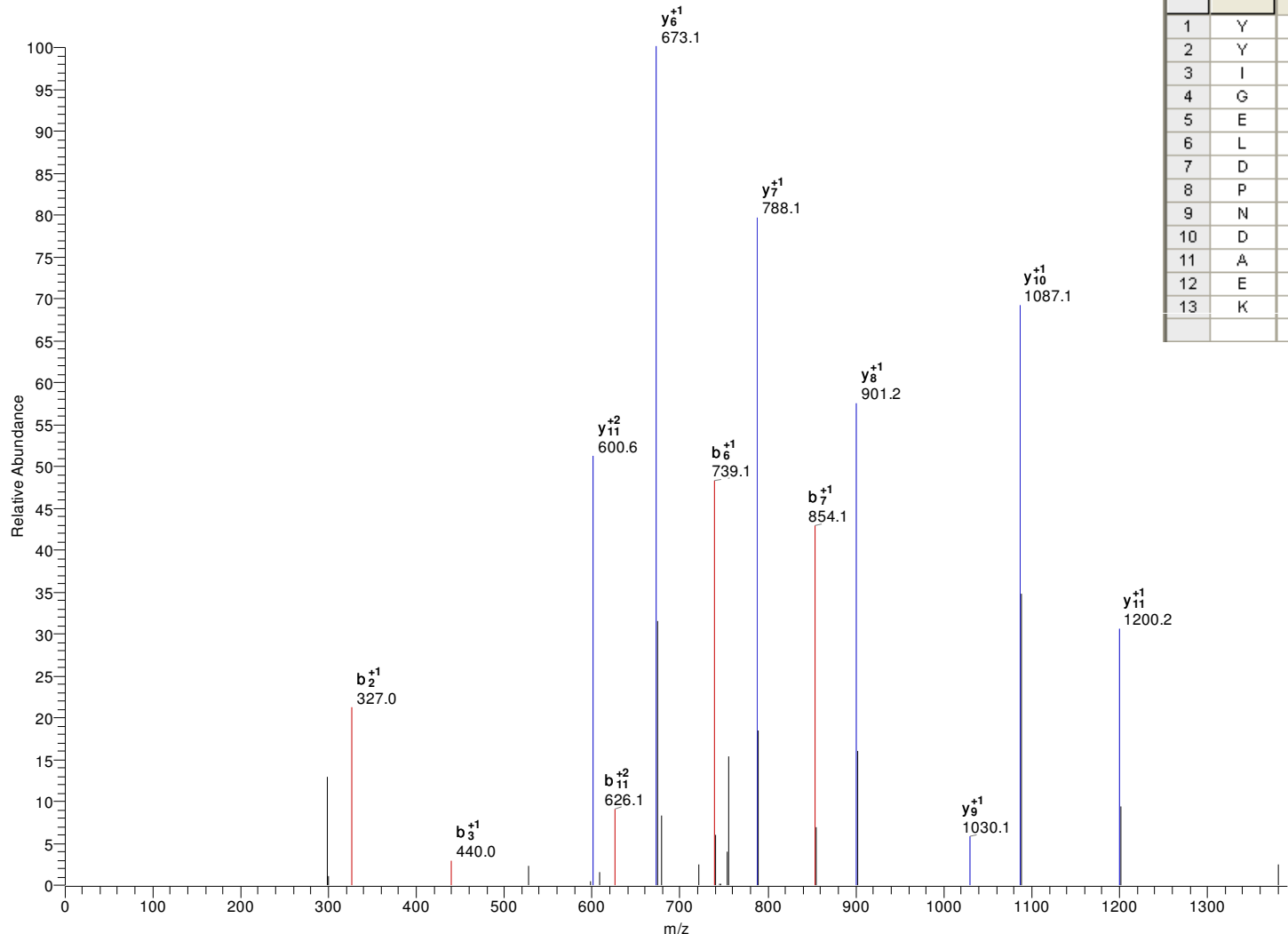
M+H=1526.700928
DCn=0.35

DeltaM=1.32585

z=2

P(pep)=6.81E-05

#3808-3808 NL: 4.91E1



	AA	B	Y	
		<input checked="" type="checkbox"/>	<input checked="" type="checkbox"/>	
1	Y	164.07	-	13
2	Y	327.13	1363.64	12
3	I	440.22	1200.57	11
4	G	497.24	1087.49	10
5	E	626.28	1030.47	9
6	L	739.37	901.43	8
7	D	854.39	788.34	7
8	P	951.45	673.32	6
9	N	1065.49	576.26	5
10	D	1180.52	462.22	4
11	A	1251.55	347.19	3
12	E	1380.60	276.16	2
13	K	-	147.11	1

gi|70879199|gb|EAN92392.1| hypothetical protein, conserved [*Trypanosoma cruzi*]

K.GAPQTSSSGGSTTATTAGNAGPK.D

M+H=2106.989746

DeltaM=1.60503

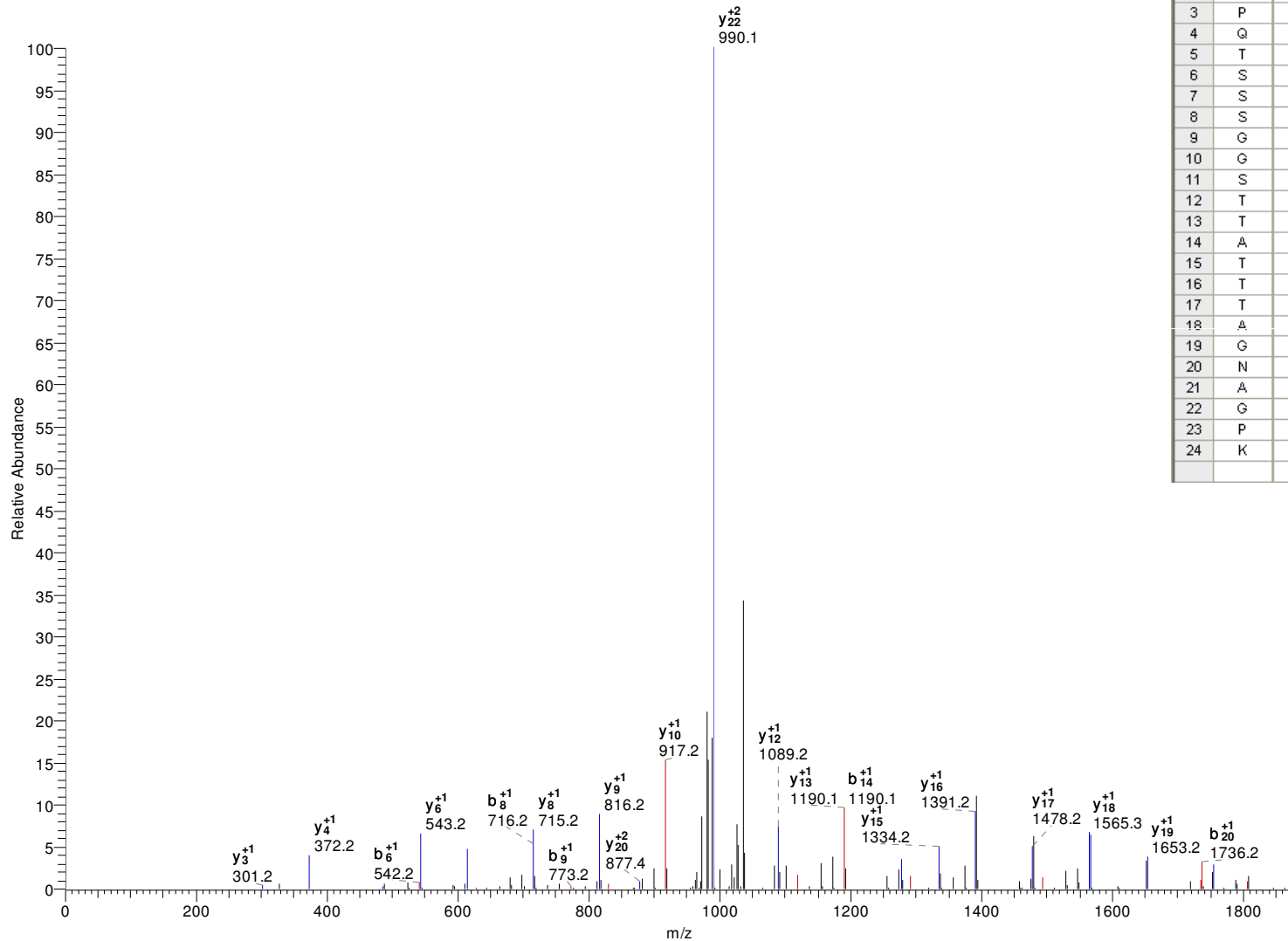
z=2

P(pep)=2.22E-15

Xcorr=6.47

DCn=0.61

#2164-2164 NL: 7.79E2



	AA	B	Y	
		✓	✓	
1	G	58.03	-	24
2	A	129.07	2049.97	23
3	P	226.12	1978.93	22
4	Q	354.18	1881.88	21
5	T	455.22	1753.82	20
6	S	542.26	1652.77	19
7	S	629.29	1565.74	18
8	S	716.32	1478.71	17
9	G	773.34	1391.68	16
10	G	830.36	1334.65	15
11	S	917.40	1277.63	14
12	T	1018.44	1190.60	13
13	T	1119.49	1089.55	12
14	A	1190.53	988.51	11
15	T	1291.58	917.47	10
16	T	1392.62	816.42	9
17	T	1493.67	715.37	8
18	A	1564.71	614.33	7
19	G	1621.73	543.29	6
20	N	1735.77	486.27	5
21	A	1806.81	372.22	4
22	G	1863.83	301.19	3
23	P	1960.88	244.17	2
24	K	-	147.11	1

gi|1658195|gb|AAB18265.1| surface protein-1 [*Trypanosoma cruzi*]

K.APSESTPLLGAGLGDNDGTK.F

M+H=1899.929443

DeltaM=1.79277

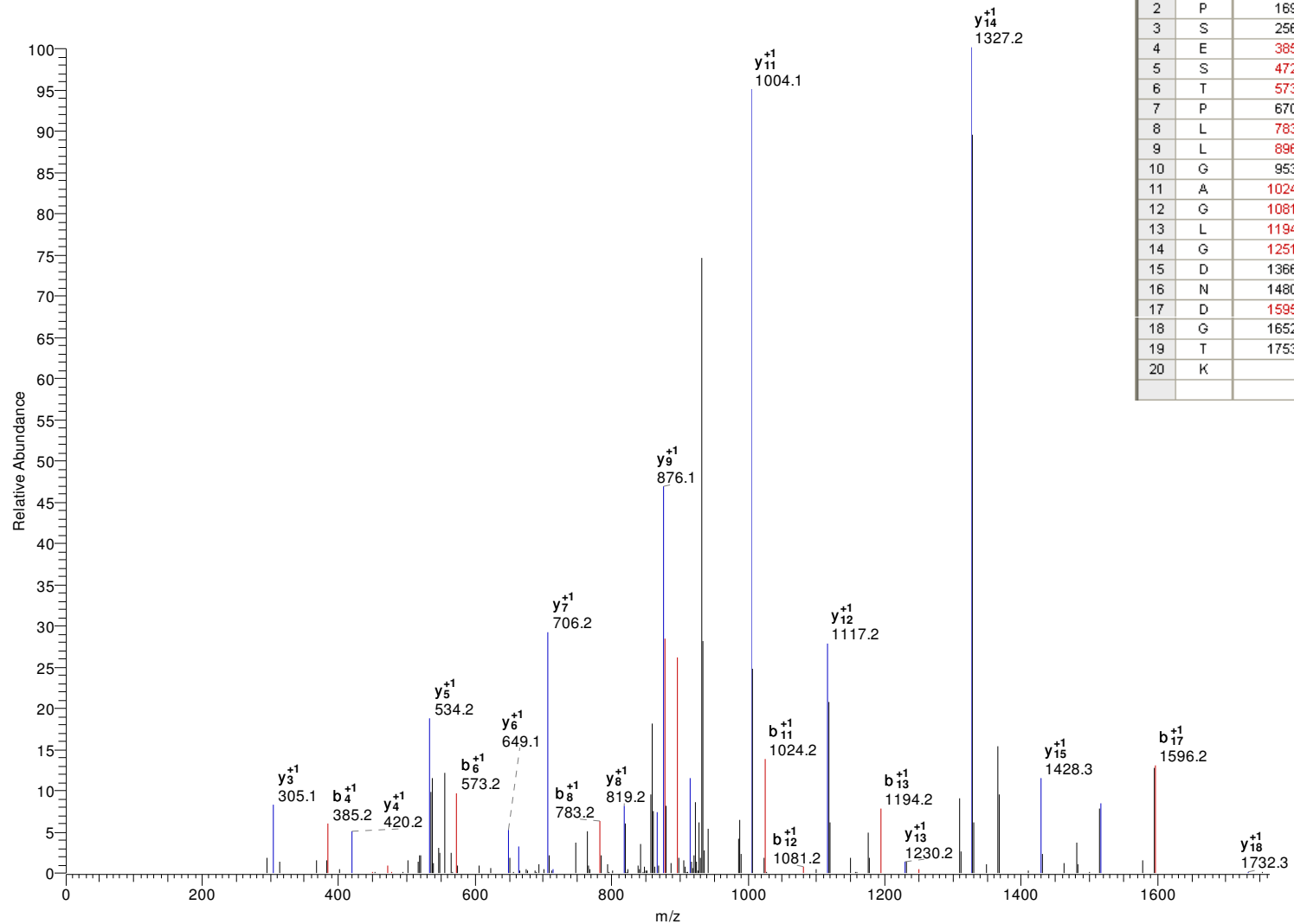
z=2

P(pep)=5.00E-10

Xcorr=5.24

DCn=0.64

#3958-3958 NL: 2.67E2



	AA	B	Y	
		<input checked="" type="checkbox"/>	<input checked="" type="checkbox"/>	
1	A	72.04	-	20
2	P	169.10	1828.89	19
3	S	256.13	1731.84	18
4	E	385.17	1644.81	17
5	S	472.20	1515.76	16
6	T	573.25	1428.73	15
7	P	670.30	1327.69	14
8	L	783.39	1230.63	13
9	L	896.47	1117.55	12
10	G	953.49	1004.46	11
11	A	1024.53	947.44	10
12	G	1081.55	876.41	9
13	L	1194.64	819.38	8
14	G	1251.66	706.30	7
15	D	1366.68	649.28	6
16	N	1480.73	534.25	5
17	D	1595.75	420.21	4
18	G	1652.78	305.18	3
19	T	1753.82	248.16	2
20	K	-	147.11	1

gi|70886265|gb|EAN99051.1| hypothetical protein, conserved [*Trypanosoma cruzi*]
K.VAQCFVEIAGGSSK.N M+H=1452.71521 DCn=1.46745

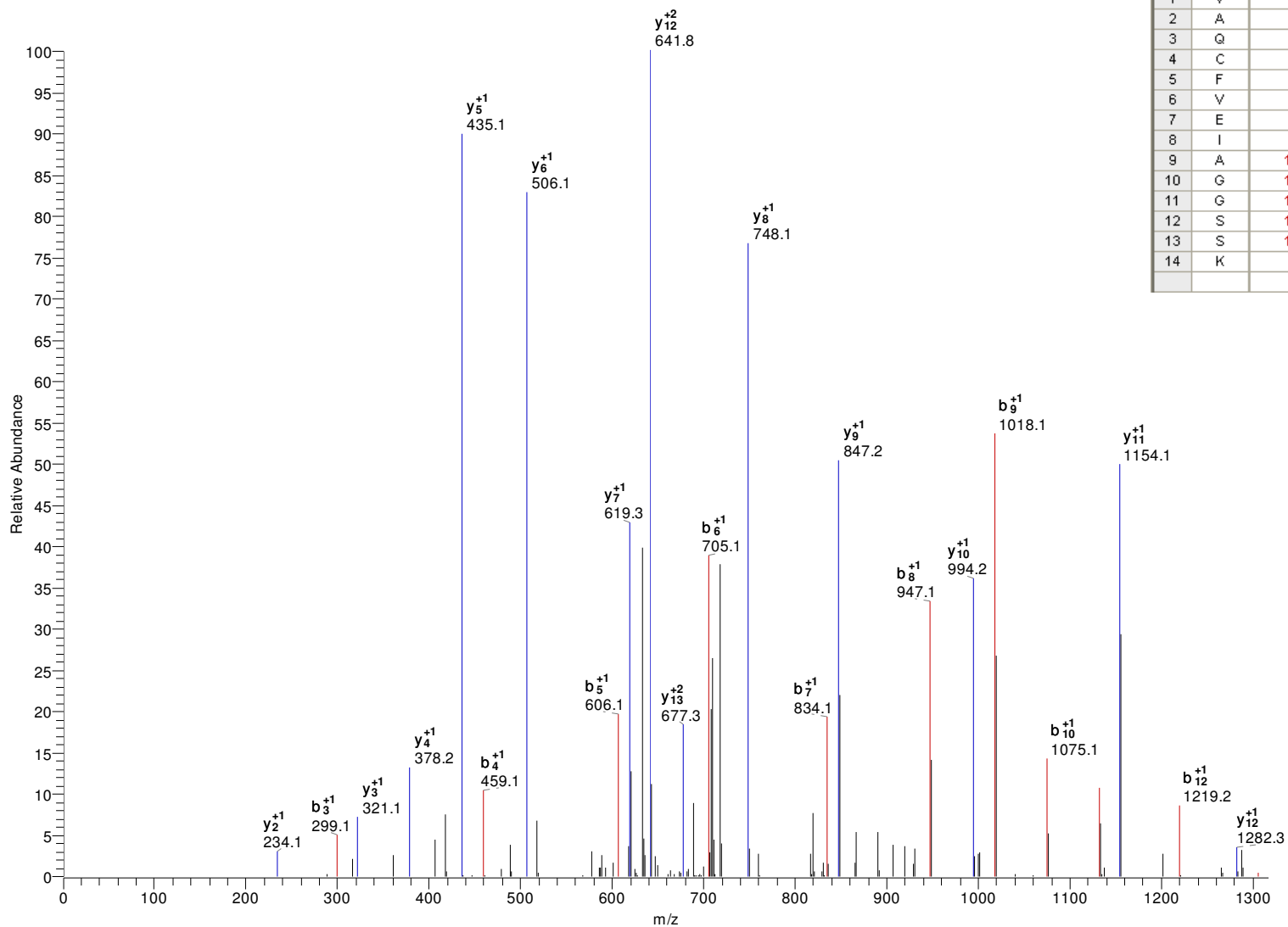
z=2

P(pep)=7.74E-10

Xcorr=4.84

DCn=0.58

#3491-3491 NL: 1.94E2



	AA	B	Y	
		<input checked="" type="checkbox"/>	<input checked="" type="checkbox"/>	
1	V	100.08	-	14
2	A	171.11	1353.65	13
3	Q	299.17	1282.61	12
4	C	459.20	1154.55	11
5	F	606.27	994.52	10
6	V	705.34	847.45	9
7	E	834.38	748.38	8
8	I	947.47	619.34	7
9	A	1018.50	506.26	6
10	G	1075.52	435.22	5
11	G	1132.55	378.20	4
12	S	1219.58	321.18	3
13	S	1306.61	234.14	2
14	K	-	147.11	1

gi|70883049|gb|EAN95983.1| ATPase beta subunit, putative [*Trypanosoma cruzi*]

R.FTQANSEVSALLGR.I

M+H=1492.775391

DCn=-0.13655

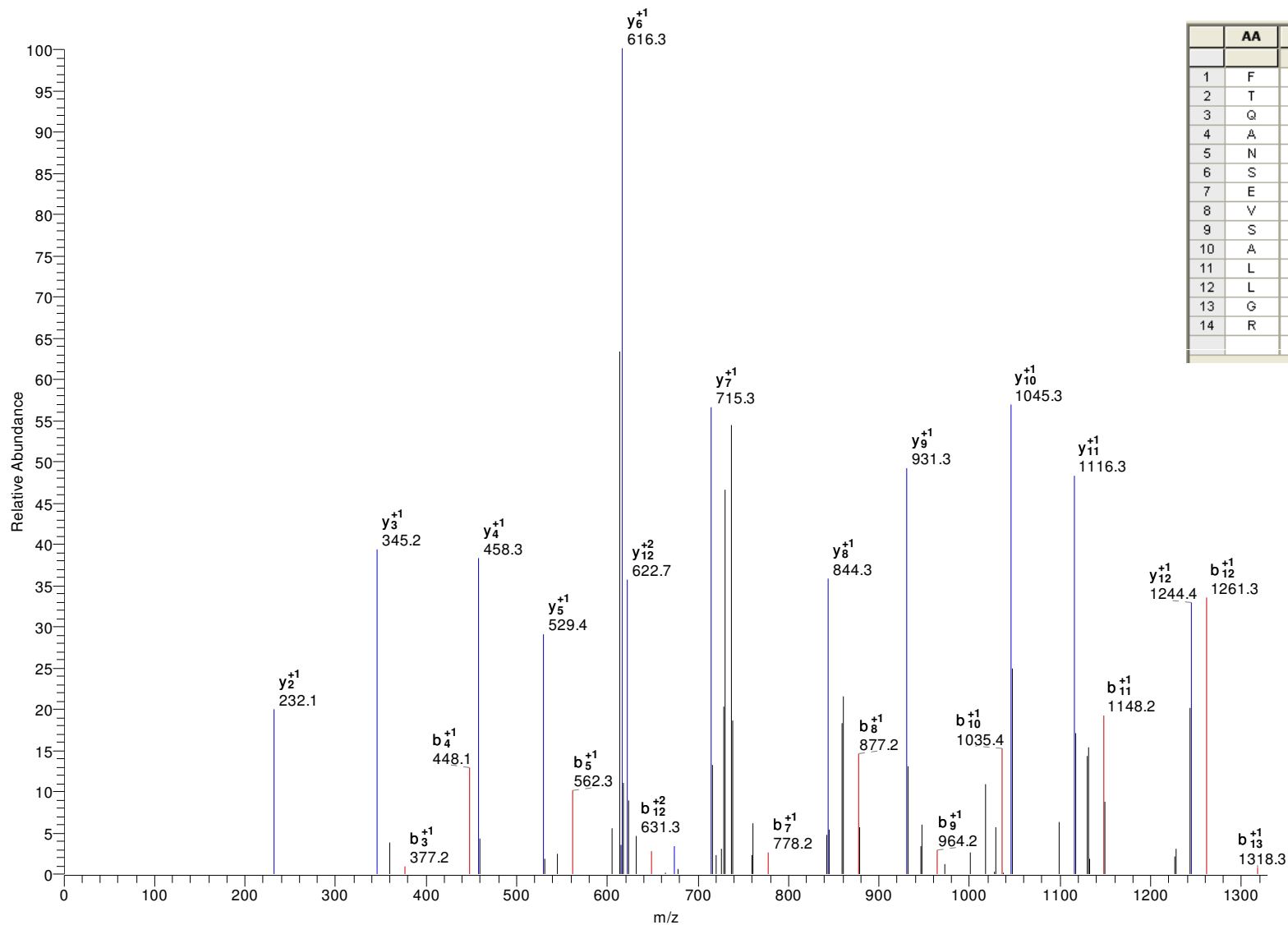
z=2

P(pep)=5.00E-09

Xcorr=4.69

DCn=0.60

#4979-4979 NL: 6.72E1



	AA	B	Y	
		✓	✓	
1	F	148.08	-	14
2	T	249.12	1345.71	13
3	Q	377.18	1244.66	12
4	A	448.22	1116.60	11
5	N	562.26	1045.56	10
6	S	649.29	931.52	9
7	E	778.34	844.49	8
8	V	877.41	715.45	7
9	S	964.44	616.38	6
10	A	1035.47	529.35	5
11	L	1148.56	458.31	4
12	L	1261.64	345.22	3
13	G	1318.66	232.14	2
14	R	-	175.12	1

gi|70881822|gb|EAN94827.1| protein tyrosine phosphatase, putative [*Trypanosoma cruzi*]

R.VCGLTYDATQLEK.N

M+H=1497.725464

DCn=0.92375

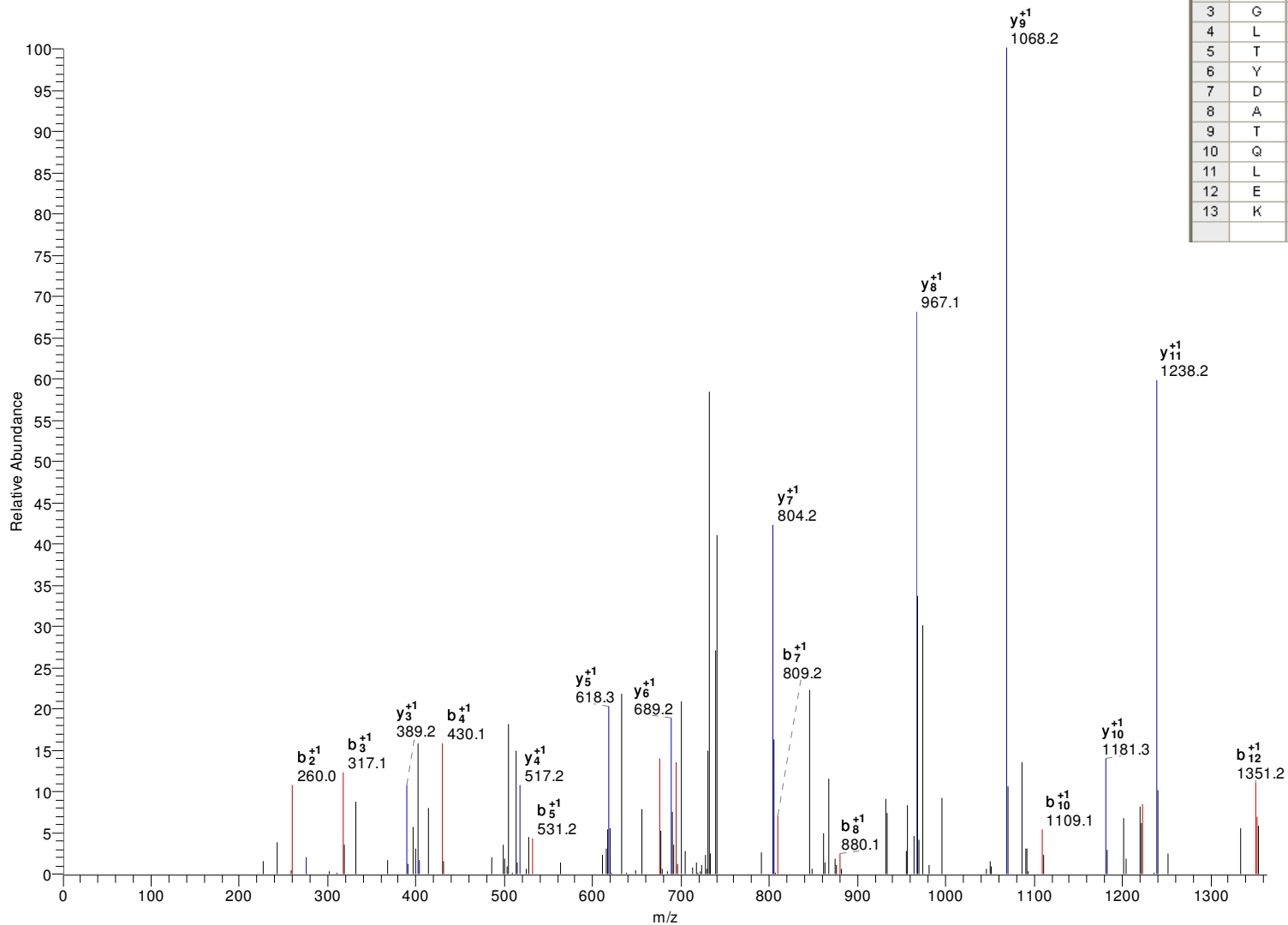
z=2

P(pep)=3.11E-06

Xcorr=4.11

DCn=0.50

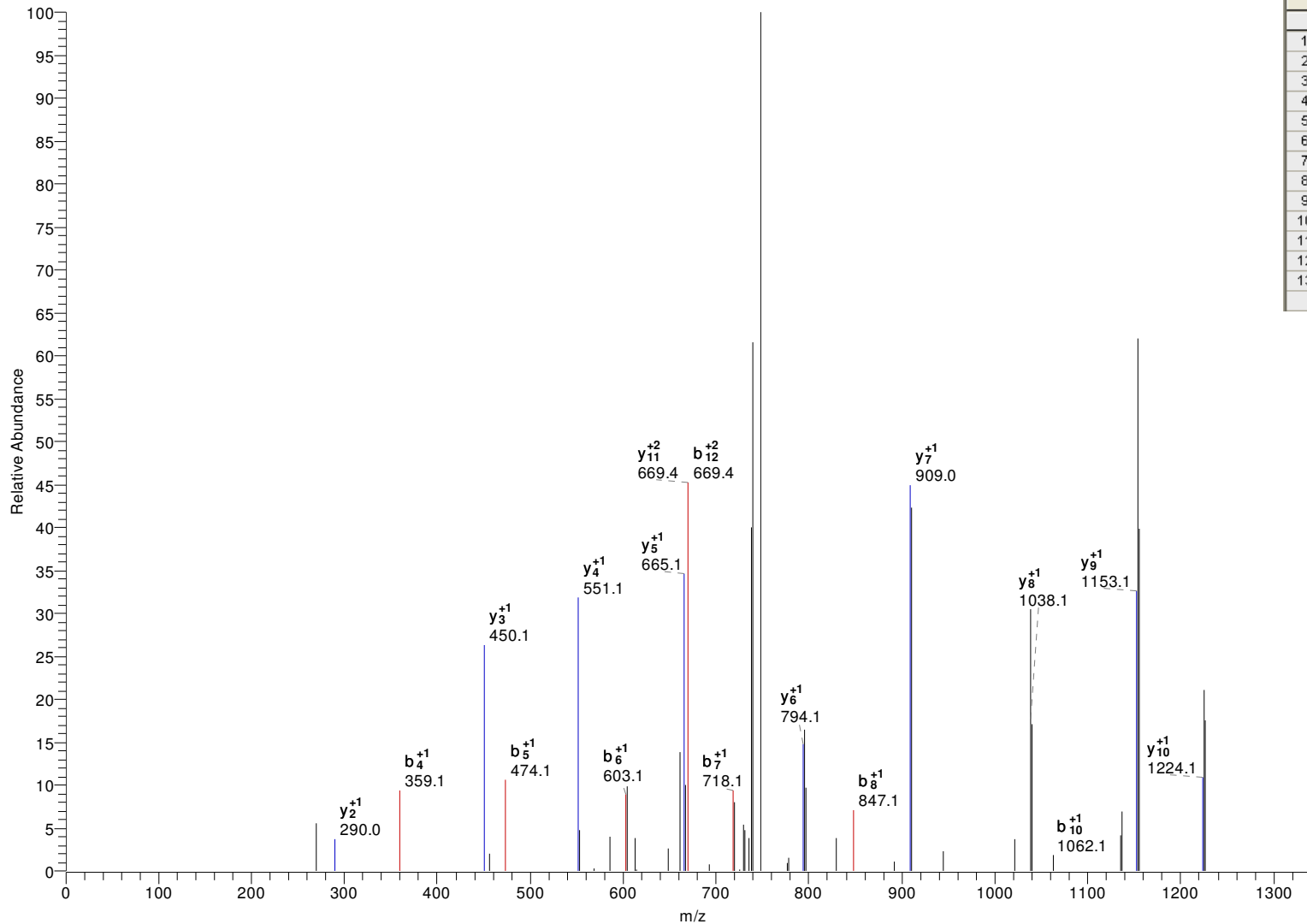
#3631-3631 NL: 1.57E2



	AA	B	Y	
		☑	☑	
1	V	100.08	-	13
2	C	260.11	1398.66	12
3	G	317.13	1238.63	11
4	L	430.21	1181.60	10
5	T	531.26	1068.52	9
6	Y	694.32	967.47	8
7	D	809.35	804.41	7
8	A	880.39	689.38	6
9	T	981.43	618.35	5
10	Q	1109.49	517.30	4
11	L	1222.58	389.24	3
12	E	1351.62	276.16	2
13	K	-	147.11	1

gi|70874541|gb|EAN88213.1| hypothetical protein, conserved [*Trypanosoma cruzi*]
R.SSLADEDENTCDR.V M+H=1511.591553 DeltaM=1.09319 z=2
P(pep)3.65E-08 Xcorr=3.49 DCn=0.18

#2170-2170 NL: 7.70E1



	AA	B	Y	
		✓	✓	
1	S	88.04	-	13
2	S	175.07	1424.56	12
3	L	288.16	1337.53	11
4	A	359.19	1224.44	10
5	D	474.22	1153.41	9
6	E	603.26	1038.38	8
7	D	718.29	909.34	7
8	E	847.33	794.31	6
9	N	961.37	665.27	5
10	T	1062.42	551.22	4
11	C	1222.45	450.18	3
12	D	1337.48	290.15	2
13	R	-	175.12	1

gi|148251368|gb|ABQ53588.1| surface protein-2 [*Trypanosoma cruzi*]

K.GSVYVDGVIVGSPAK.I

M+H=1447.779175

DeltaM=1.35222

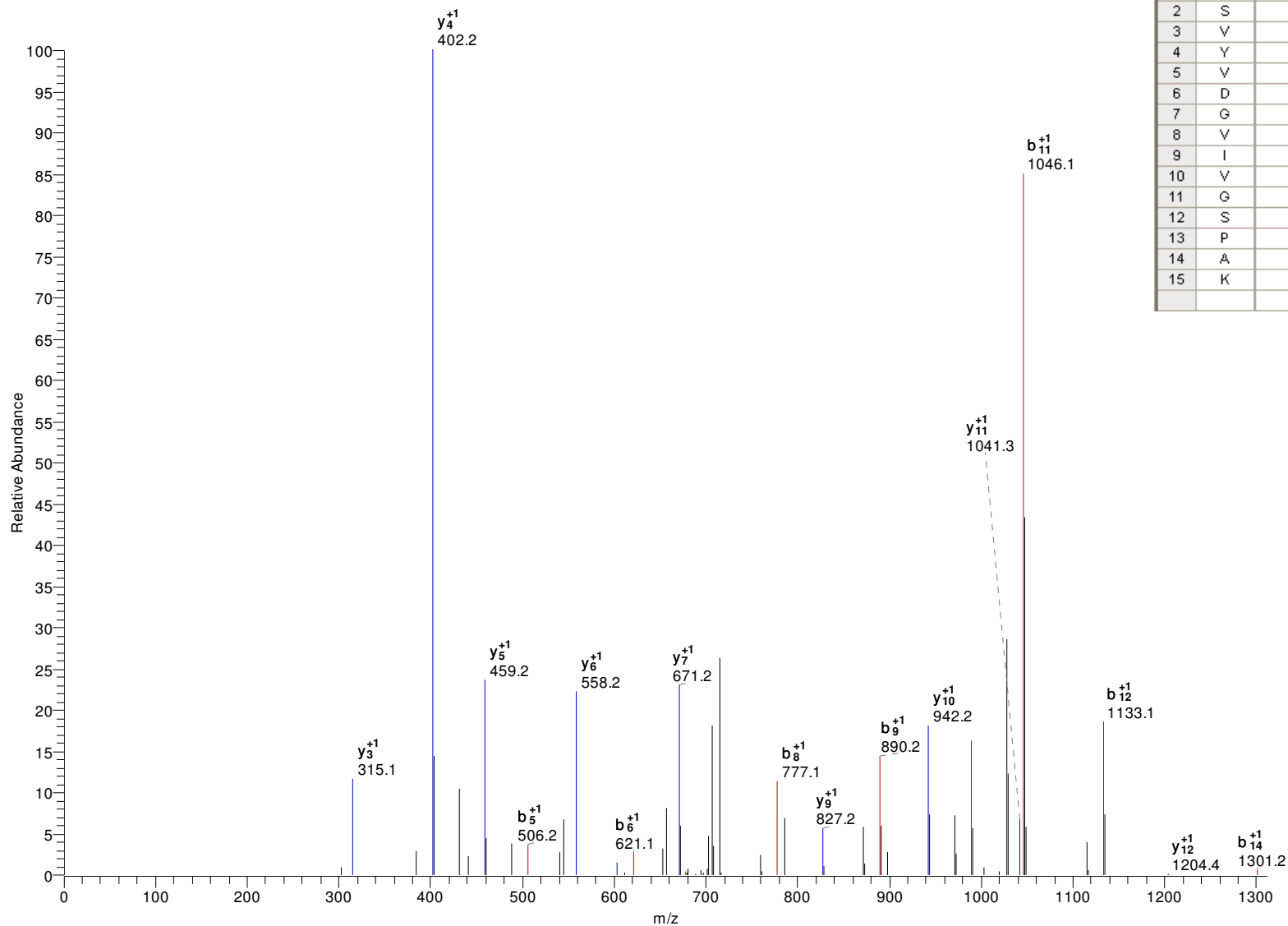
z=2

P(pep)=2.42E-4

Xcorr=3.44

DCn=0.45

#3703-3703 NL: 1.40E2

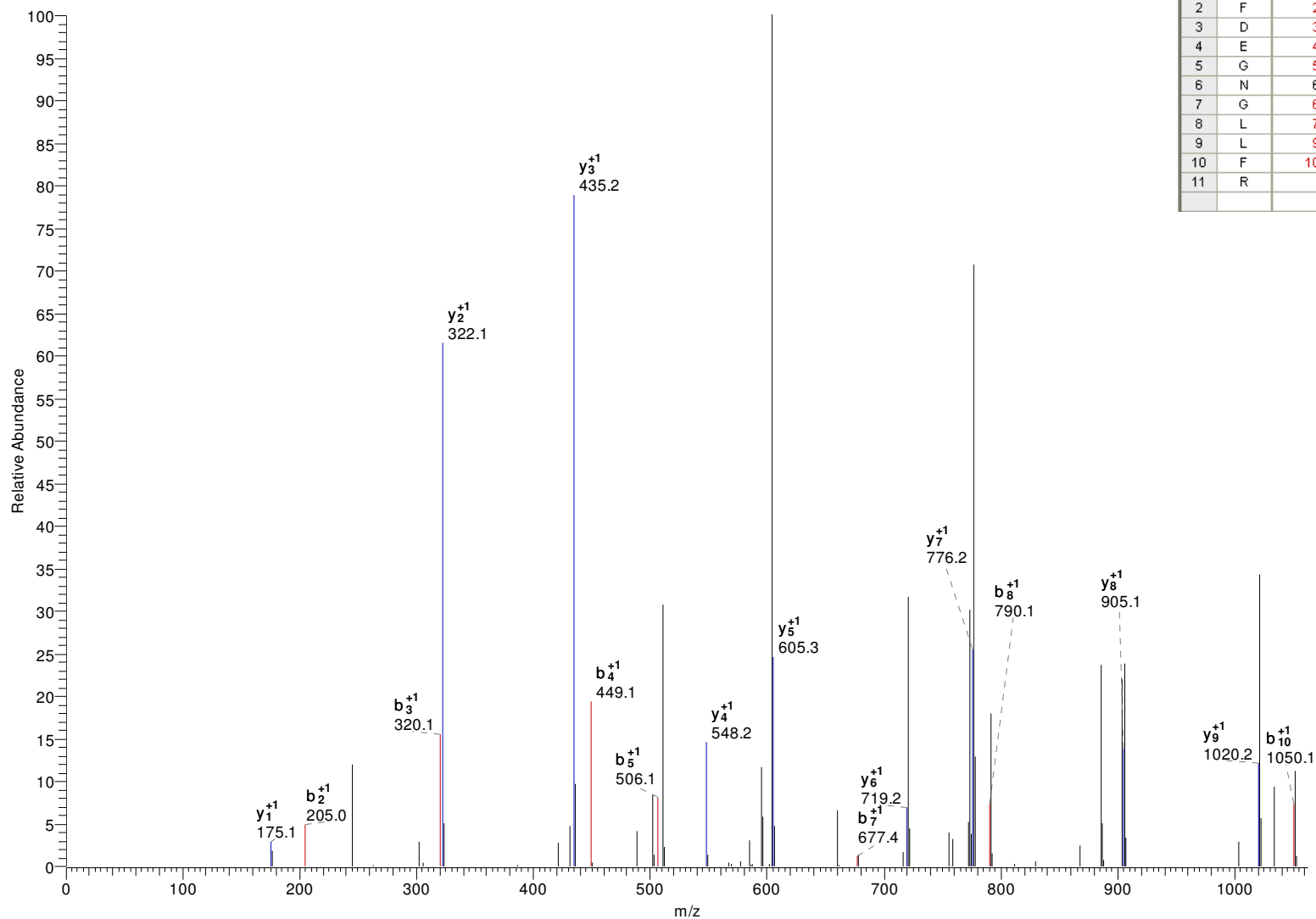


	AA	B	Y	
		<input checked="" type="checkbox"/>	<input checked="" type="checkbox"/>	
1	G	58.03	-	15
2	S	145.06	1390.76	14
3	V	244.13	1303.73	13
4	Y	407.19	1204.66	12
5	V	506.26	1041.59	11
6	D	621.29	942.53	10
7	G	678.31	827.50	9
8	V	777.38	770.48	8
9	I	890.46	671.41	7
10	V	989.53	558.32	6
11	G	1046.55	459.26	5
12	S	1133.58	402.23	4
13	P	1230.64	315.20	3
14	A	1301.67	218.15	2
15	K	-	147.11	1

gi|70870091|gb|EAN84515.1| calpain-like cysteine peptidase, putative [*Trypanosoma cruzi*]

R.GFDEGNLLFR.I M+H=1224.600708 DeltaM=1.88127 z=2
P(pep)=8.10E-06 Xcorr=3.41 DCn0.30

#4763-4763 NL: 2.03E2



	AA	B	Y	
		✓	✓	
1	G	58.03	-	11
2	F	205.10	1167.58	10
3	D	320.12	1020.51	9
4	E	449.17	905.48	8
5	G	506.19	776.44	7
6	N	620.23	719.42	6
7	G	677.25	605.38	5
8	L	790.34	548.36	4
9	L	903.42	435.27	3
10	F	1050.49	322.19	2
11	R	-	175.12	1

gi|21321393|gb|AAM47178.1|AF426134_1 surface glycoprotein GP90 [*Trypanosoma cruzi*]

K.TTESGTWEPGK.E

M+H=1192.548096

DeltaM=1.52178

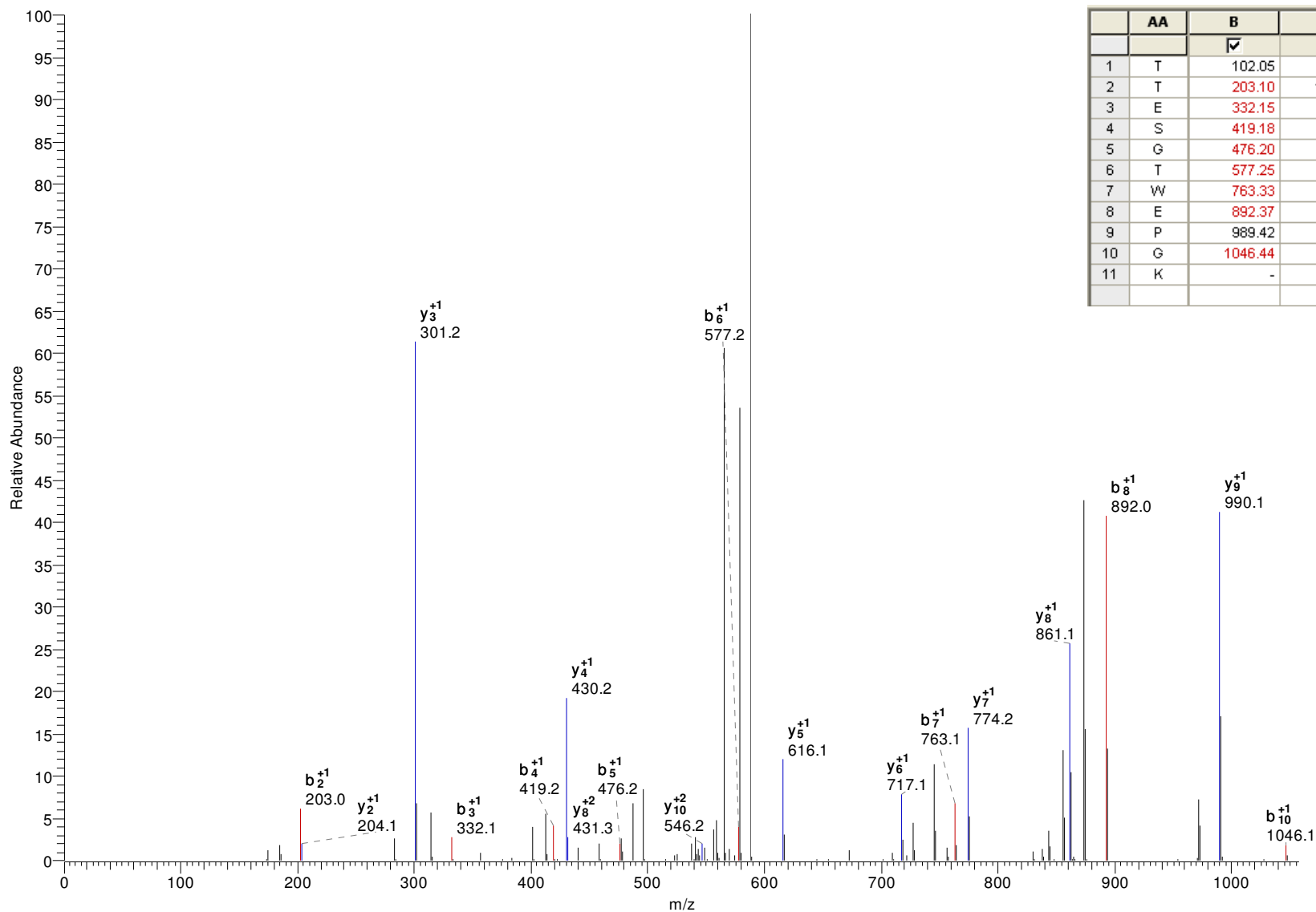
z=2

P(pep)=5.48E-07

Xcorr=3.37

DCn=0.49

#2530-2530 NL: 1.68E3



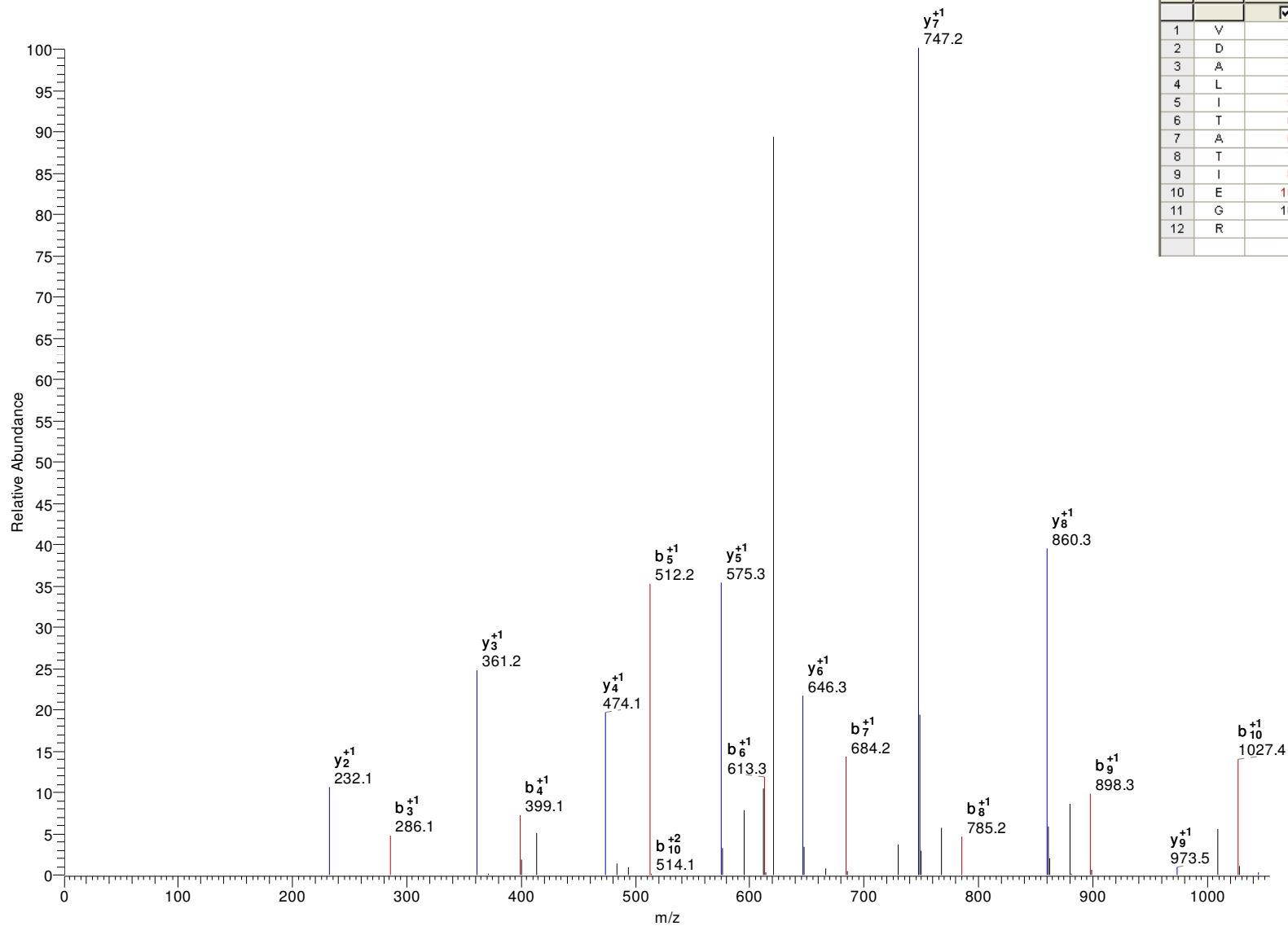
	AA	B	Y	
		<input checked="" type="checkbox"/>	<input checked="" type="checkbox"/>	
1	T	102.05	-	11
2	T	203.10	1091.50	10
3	E	332.15	990.45	9
4	S	419.18	861.41	8
5	G	476.20	774.38	7
6	T	577.25	717.36	6
7	W	763.33	616.31	5
8	E	892.37	430.23	4
9	P	989.42	301.19	3
10	G	1046.44	204.13	2
11	K	-	147.11	1

gi|70871117|gb|EAN85322.1| *trans*-sialidase, putative [*Trypanosoma cruzi*]

R.VDALITATIEGR.K M+H=1258.700195 DeltaM=1.24602 z=2

P(pep)=3.82E-06 Xcorr=3.35 DCn=0.41

#4580-4580 NL: 8.01E1



	AA	B	Y	
		✓	✓	
1	V	100.08	-	12
2	D	215.10	1159.63	11
3	A	286.14	1044.60	10
4	L	399.22	973.57	9
5	I	512.31	860.48	8
6	T	613.36	747.40	7
7	A	684.39	646.35	6
8	T	785.44	575.31	5
9	I	898.52	474.27	4
10	E	1027.57	361.18	3
11	G	1084.59	232.14	2
12	R	-	175.12	1

gi|70881464|gb|EAN94492.1| protein tyrosine phosphatase, putative [*Trypanosoma cruzi*]

R.VCGPTYDASQLEK.D

M+H=1467.678467

DeltaM=1.50029

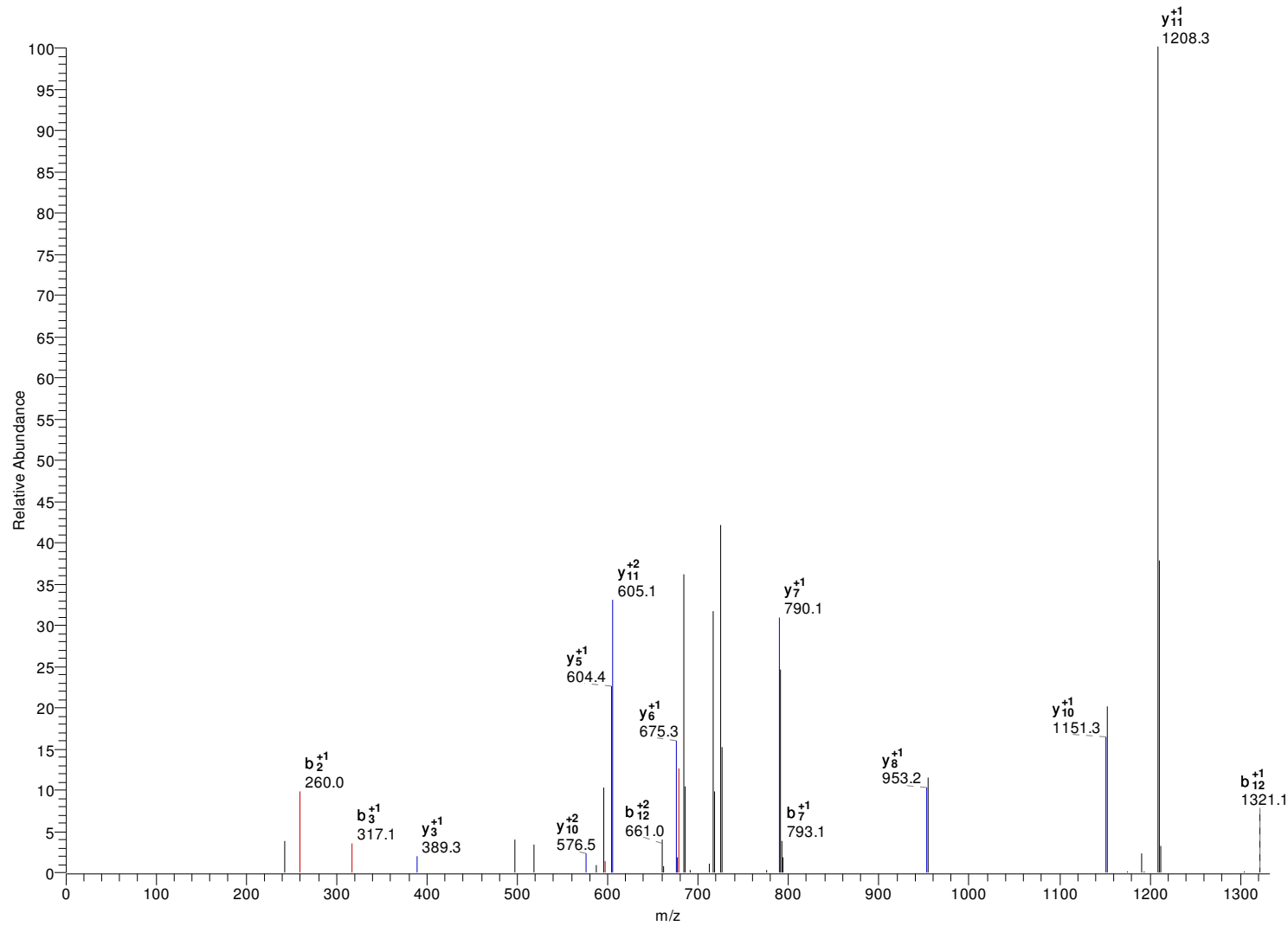
z=2

P(pep)=2.23E-08

Xcorr=3.20

DCn=0.42

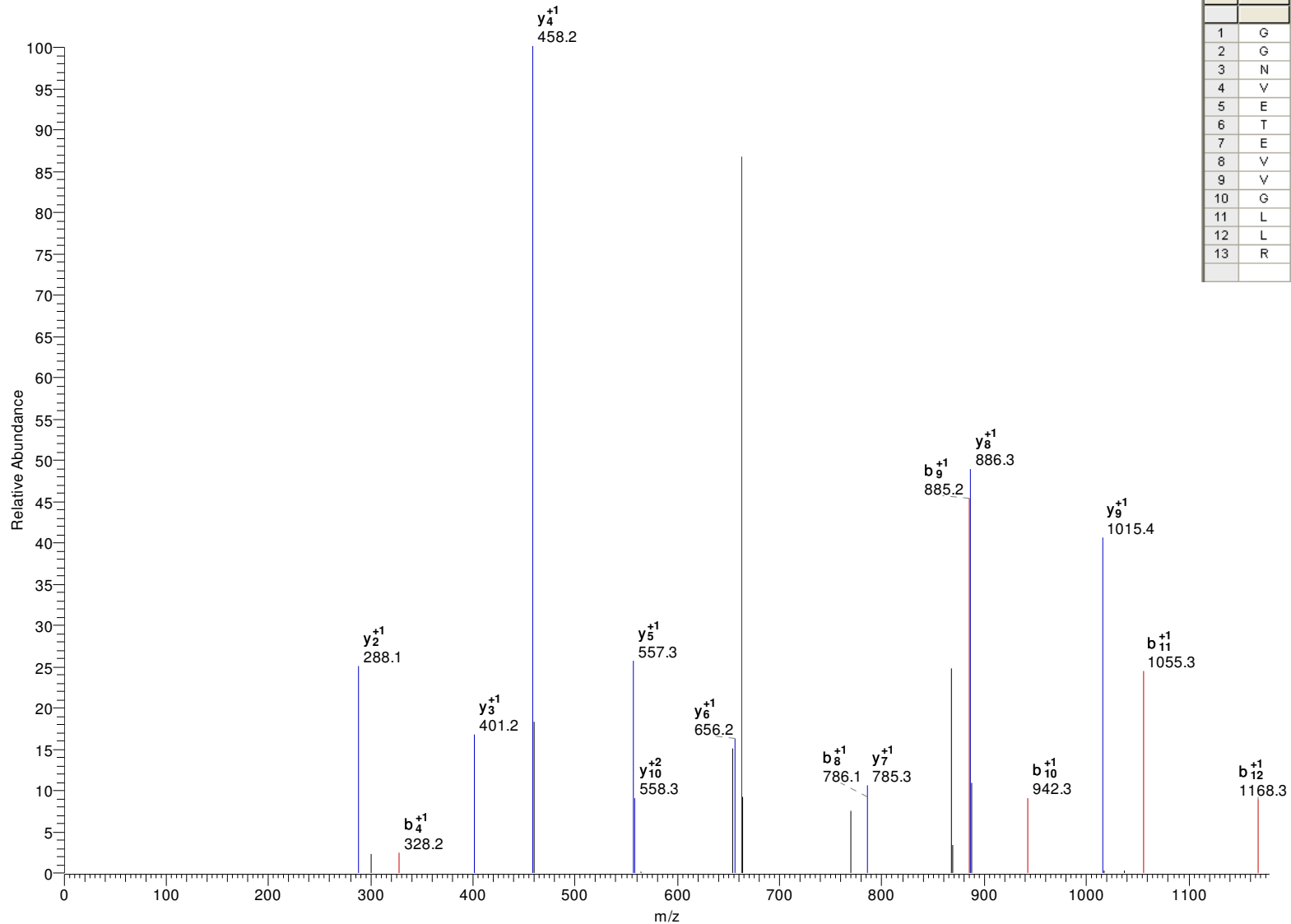
#2894-2894 NL: 7.35E1



	AA	B	Y	
		✓	✓	
1	V	100.08	-	13
2	C	260.11	1368.61	12
3	G	317.13	1208.58	11
4	P	414.18	1151.56	10
5	T	515.23	1054.51	9
6	Y	678.29	953.46	8
7	D	793.32	790.39	7
8	A	864.36	675.37	6
9	S	951.39	604.33	5
10	Q	1079.45	517.30	4
11	L	1192.53	389.24	3
12	E	1321.57	276.16	2
13	K	-	147.11	1

gi|70880016|gb|EAN93143.1| hypothetical protein, conserved [*Trypanosoma cruzi*]
R.GGNVETEVLRL M+H=1342.732544 DeltaM=1.83953 z=2
P(pep)=1.24E-05 Xcorr=3.17 DCn=0.32

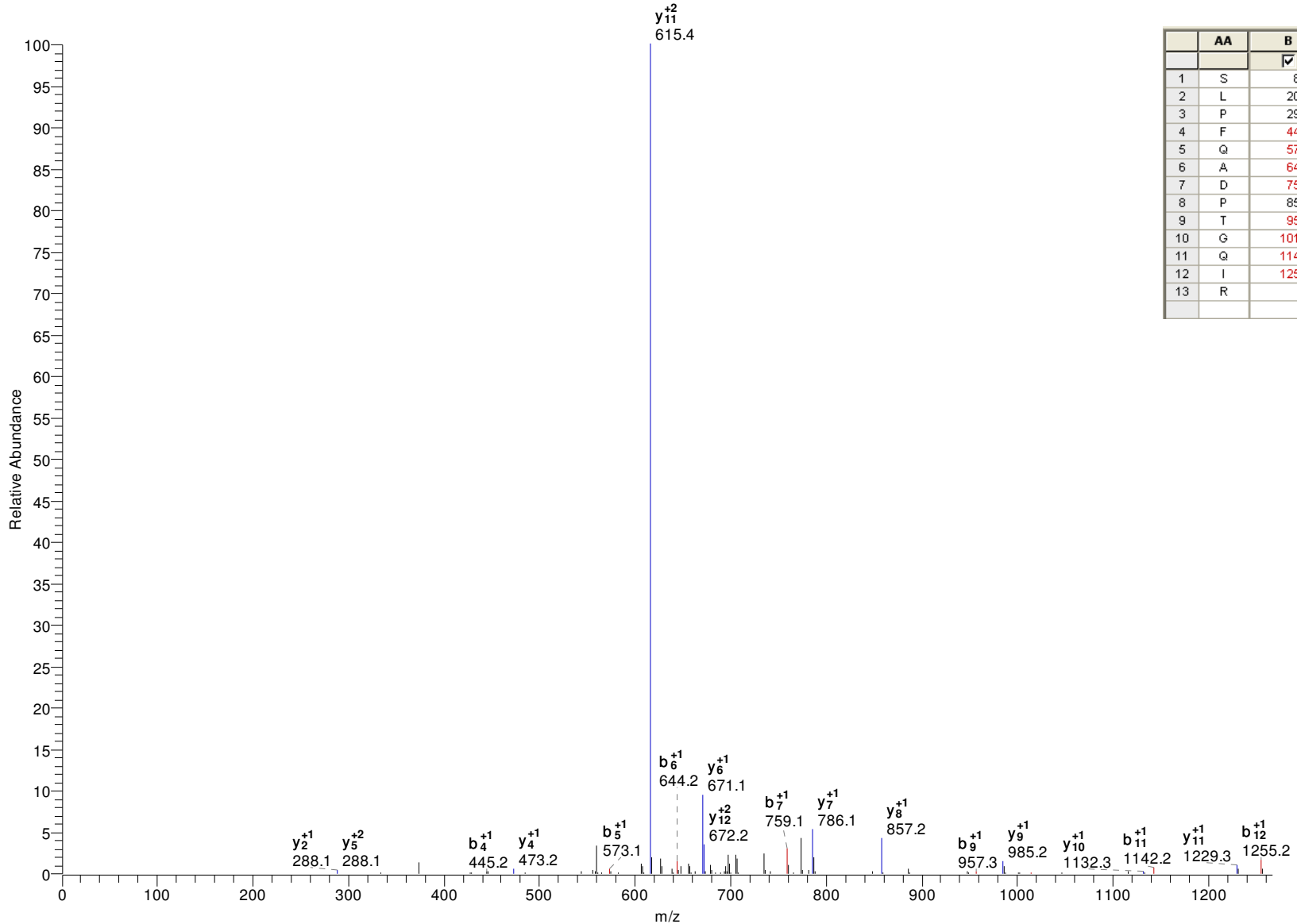
#5683-5683 NL: 2.95E1



	AA	B	Y	
		<input checked="" type="checkbox"/>	<input checked="" type="checkbox"/>	
1	G	58.03	-	13
2	G	115.05	1285.71	12
3	N	229.09	1228.69	11
4	V	328.16	1114.65	10
5	E	457.20	1015.58	9
6	T	558.25	886.54	8
7	E	687.29	785.49	7
8	V	786.36	656.45	6
9	V	885.43	557.38	5
10	G	942.45	458.31	4
11	L	1055.54	401.29	3
12	L	1168.62	288.20	2
13	R	-	175.12	1

gi|70878941|gb|EAN92155.1| hypothetical protein, conserved [*Trypanosoma cruzi*]
K.SLPFQADPTGQIR.L M+H=1429.743408 DeltaM=1.97783 z=2
P(pep)=6.39E-06 Xcorr=3.07 DCn=0.40

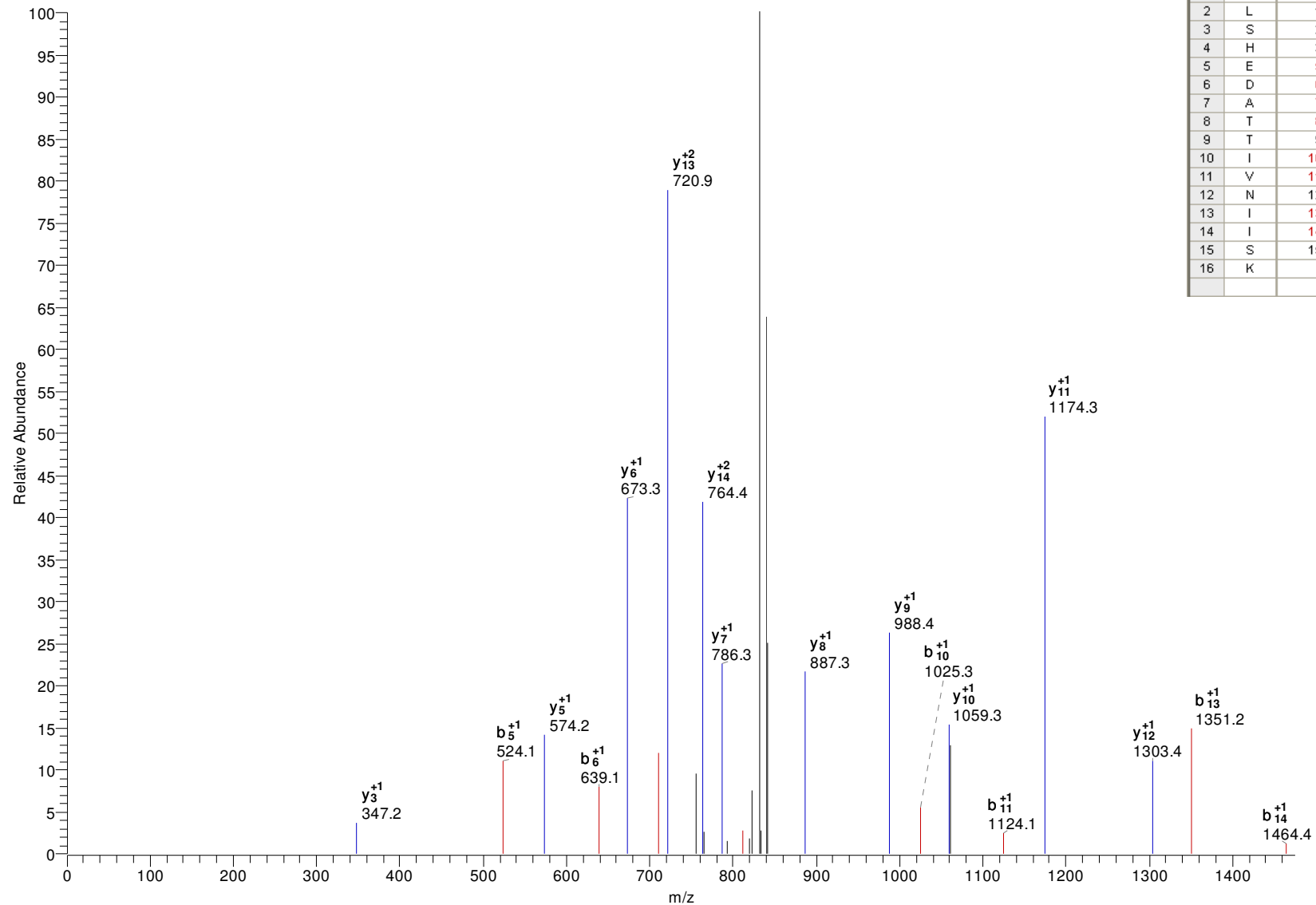
#3907-3907 NL: 1.40E3



	AA	B	Y	
		✓	✓	
1	S	88.04	-	13
2	L	201.12	1342.71	12
3	P	298.18	1229.63	11
4	F	445.24	1132.57	10
5	Q	573.30	985.51	9
6	A	644.34	857.45	8
7	D	759.37	786.41	7
8	P	856.42	671.38	6
9	T	957.47	574.33	5
10	G	1014.49	473.28	4
11	Q	1142.55	416.26	3
12	I	1255.63	288.20	2
13	R	-	175.12	1

gi|70879974|gb|EAN93104.1| hypothetical protein, conserved [*Trypanosoma cruzi*]
 K.GLSHEDATTIVNIISK.D M+H=1697.90686 DeltaM=1.21977 z=2
 P(pep)=1.46E-09 Xcorr=3.03 DCn=0.47

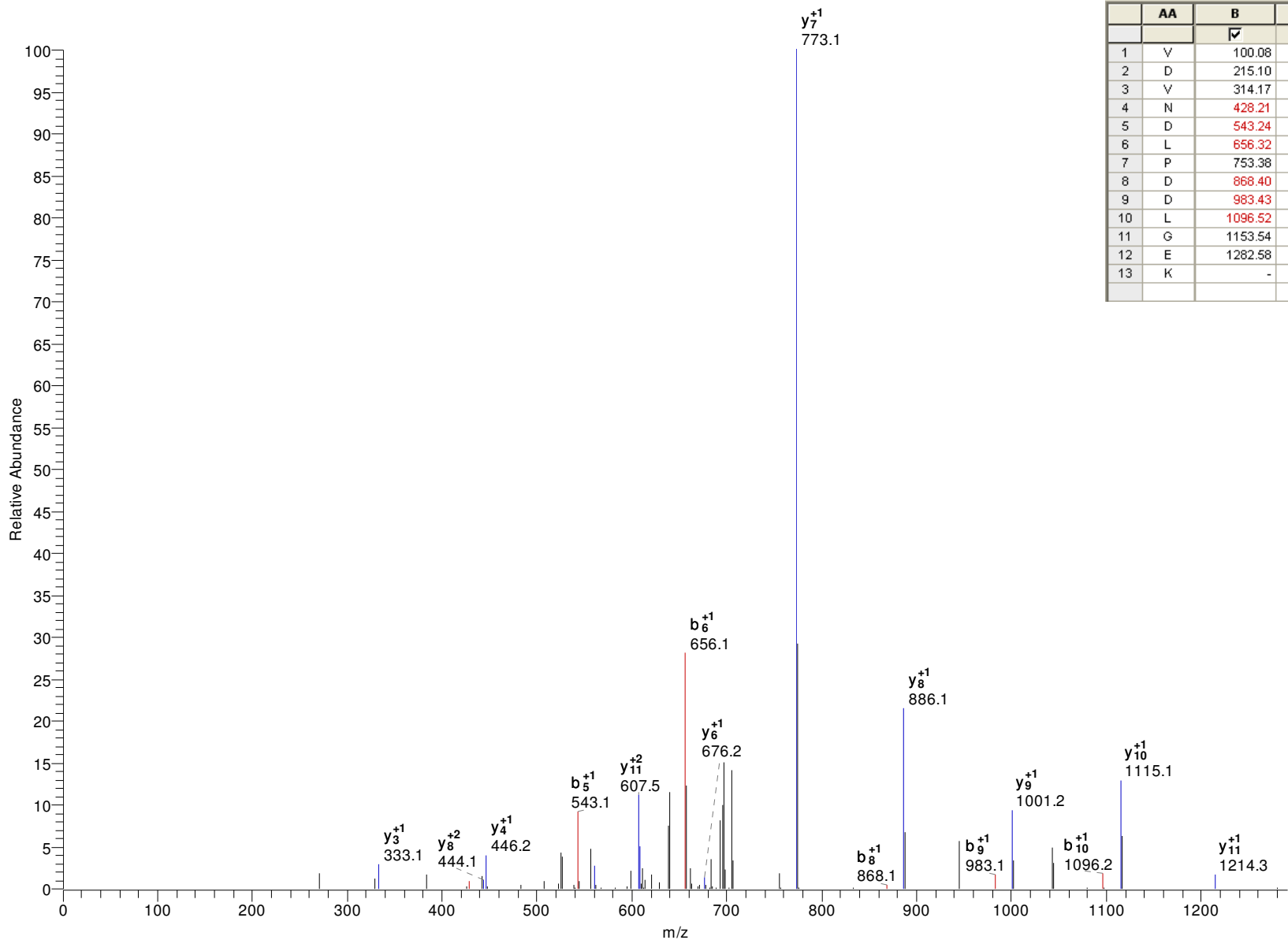
#4602-4602 NL: 1.74E1



	AA	B	Y	
		☑	☑	
1	G	58.03	-	16
2	L	171.11	1640.89	15
3	S	258.14	1527.80	14
4	H	395.20	1440.77	13
5	E	524.25	1303.71	12
6	D	639.27	1174.67	11
7	A	710.31	1059.64	10
8	T	811.36	988.60	9
9	T	912.41	887.56	8
10	I	1025.49	786.51	7
11	V	1124.56	673.42	6
12	N	1238.60	574.36	5
13	I	1351.69	460.31	4
14	I	1464.77	347.23	3
15	S	1551.80	234.14	2
16	K	-	147.11	1

gi|19401140|gb|AAL87542.1|AF254412_2 proton motive P-type ATPase 2 [*Trypanosoma cruzi*]
 -.VDVNDLPDDLGEK.- M+H=1428.685303 DeltaM=-0.05794 z=2
 P(pep)=3.19E-4 Xcorr=2.97 DCn=0.43

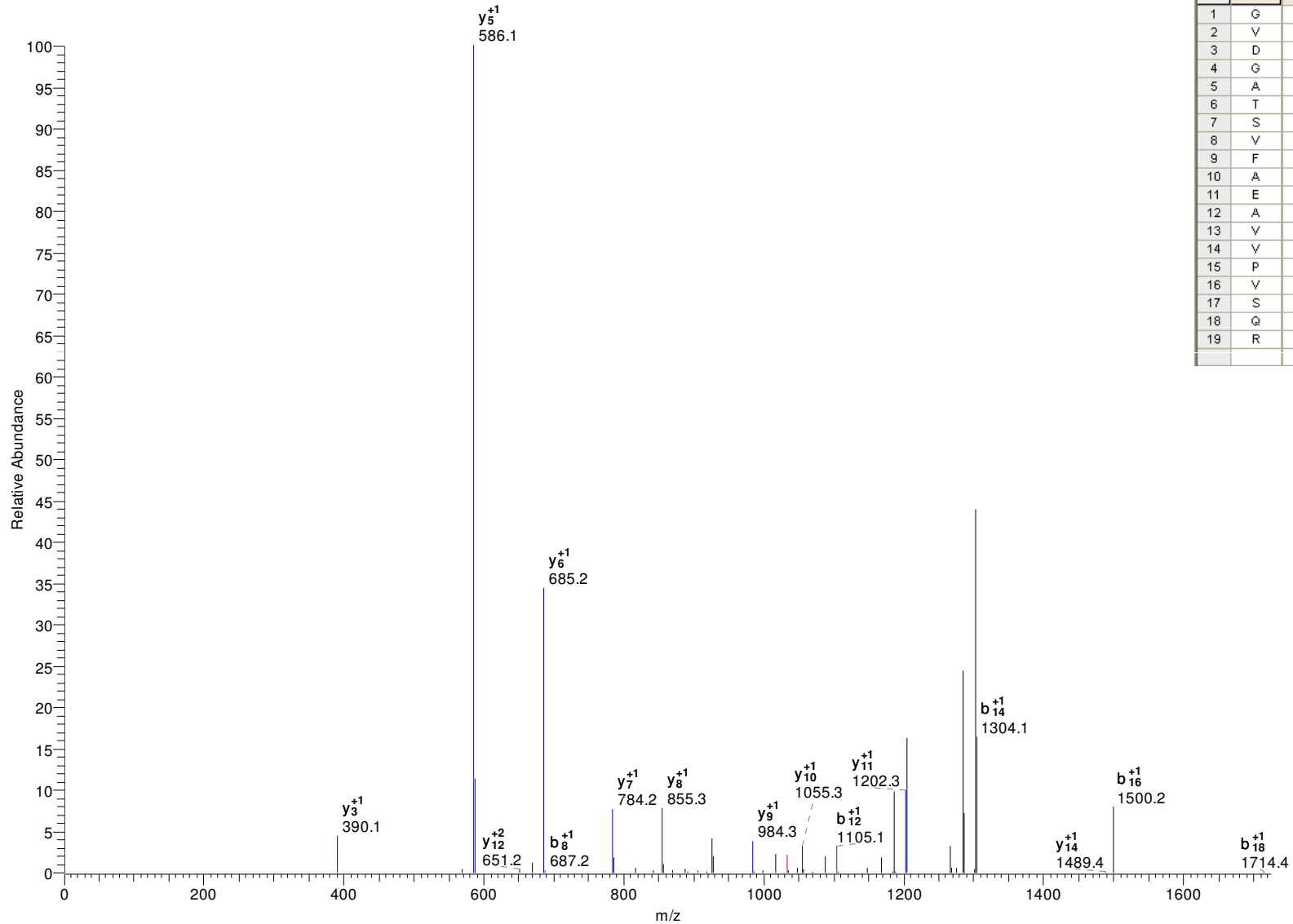
#3733-3733 NL: 3.59E2



	AA	B	Y	
		✓	✓	
1	V	100.08	-	13
2	D	215.10	1329.62	12
3	V	314.17	1214.59	11
4	N	428.21	1115.52	10
5	D	543.24	1001.48	9
6	L	656.32	886.45	8
7	P	753.38	773.37	7
8	D	868.40	676.31	6
9	D	983.43	561.29	5
10	L	1096.52	446.26	4
11	G	1153.54	333.18	3
12	E	1282.58	276.16	2
13	K	-	147.11	1

gi|70885176|gb|EAN98005.1| procyclic form surface glycoprotein, putative [*Trypanosoma cruzi*]
 K.GVDGATSVFAEAVVPVSQR.S M+H=1888.976318 DeltaM=0.21904 z=2
 P(pep)=1.41E-4 Xcorr=2.92 DCn=0.40

#4656-4656 NL: 3.60E2



	AA	B	Y	
		☑	☑	
1	G	58.03	-	19
2	V	157.10	1831.95	18
3	D	272.12	1732.89	17
4	G	329.15	1617.86	16
5	A	400.18	1560.84	15
6	T	501.23	1489.80	14
7	S	588.26	1388.75	13
8	V	687.33	1301.72	12
9	F	834.40	1202.65	11
10	A	905.44	1055.58	10
11	E	1034.48	984.55	9
12	A	1105.52	855.50	8
13	V	1204.58	784.47	7
14	V	1303.65	685.40	6
15	P	1400.71	586.33	5
16	V	1499.77	489.28	4
17	S	1586.81	390.21	3
18	Q	1714.86	303.18	2
19	R	-	175.12	1

gi|70880914|gb|EAN93978.1| mucin TcMUCII, putative [*Trypanosoma cruzi*]

K.MNVNSEGSNTQEDEEGGRNK.A

M+H=2194.926514

DeltaM=1.03496

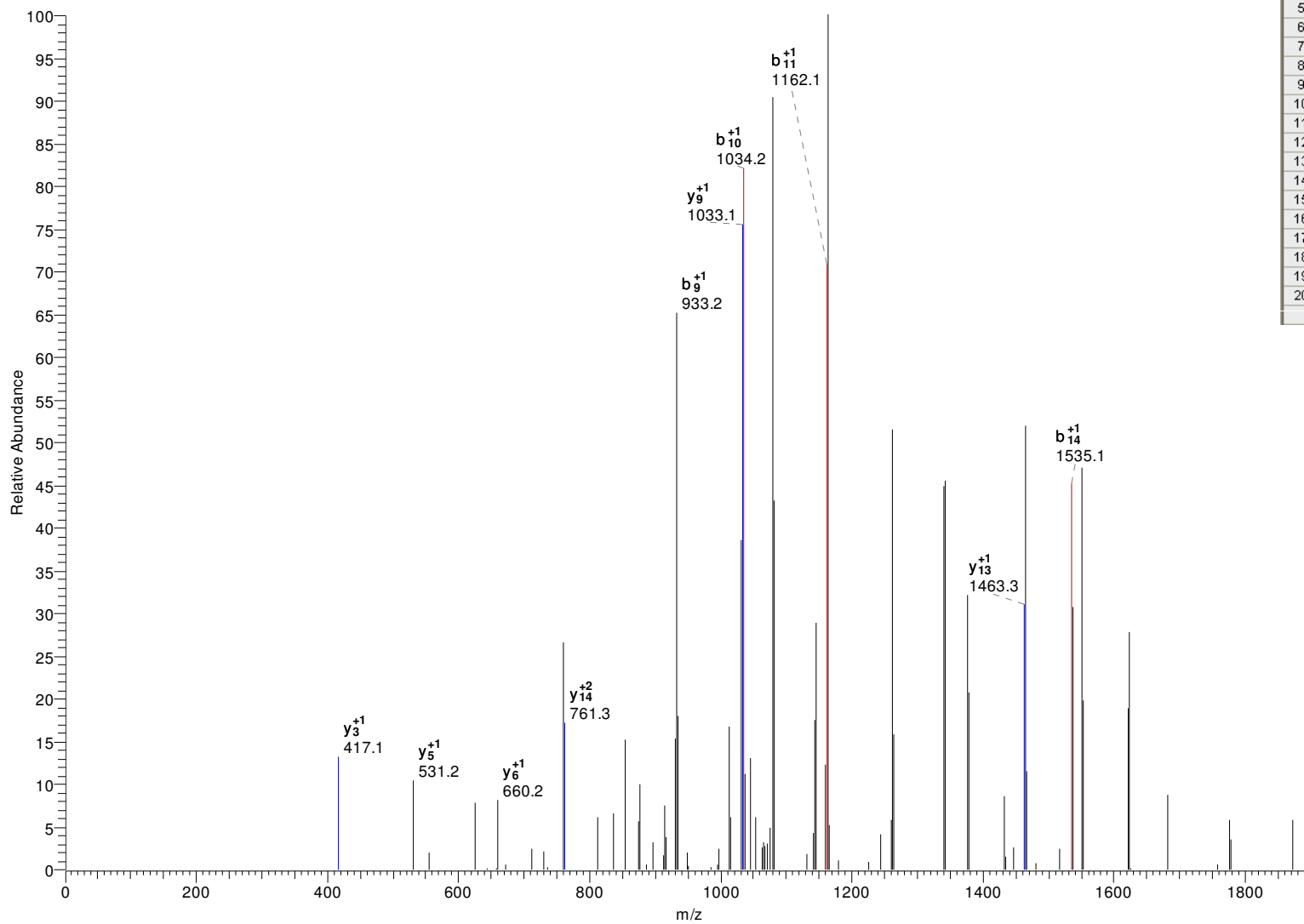
z=2

P(pep)=2.66E-4

Xcorr=2.85

DCn=0.25

#4561-4561 NL: 5.72E1



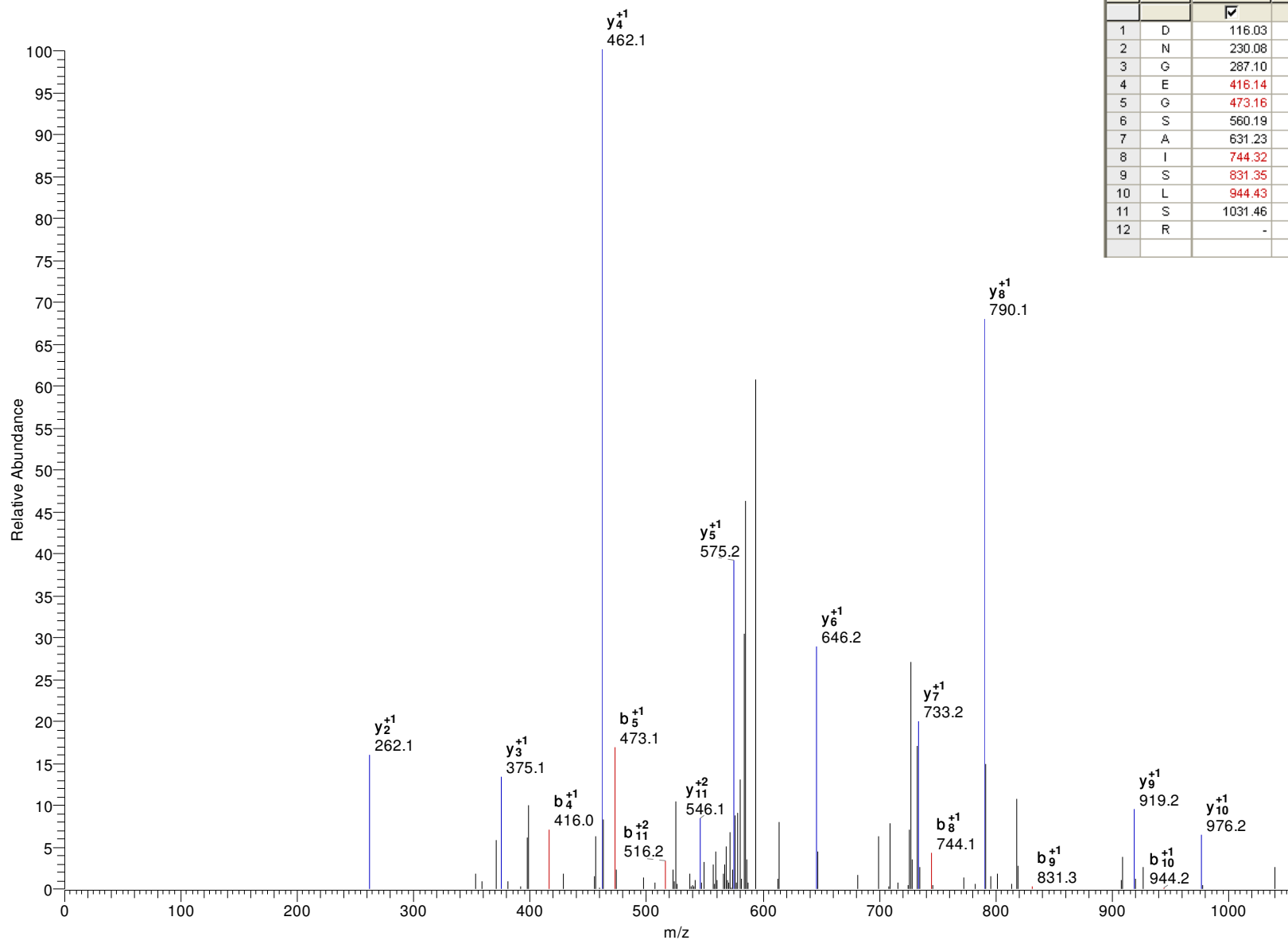
	AA	B	Y	
1	M	132.05	-	20
2	N	246.09	2063.89	19
3	V	345.16	1949.84	18
4	N	459.20	1850.77	17
5	S	546.23	1736.73	16
6	E	675.28	1649.70	15
7	G	732.30	1520.66	14
8	S	819.33	1463.64	13
9	N	933.37	1376.60	12
10	T	1034.42	1262.56	11
11	Q	1162.48	1161.51	10
12	E	1291.52	1033.45	9
13	D	1406.55	904.41	8
14	E	1535.59	789.38	7
15	E	1664.63	660.34	6
16	G	1721.66	531.30	5
17	G	1778.68	474.28	4
18	R	1934.78	417.26	3
19	N	2048.82	261.16	2
20	K	-	147.11	1

gi|70872828|gb|EAN86738.1| *trans*-sialidase, putative [*Trypanosoma cruzi*]

R.DNGEGSAISLSR.L M+H=1205.575684 DeltaM=0.12883 z=2

P(pep)=9.28E-05 Xcorr=2.70 DCn=0.45

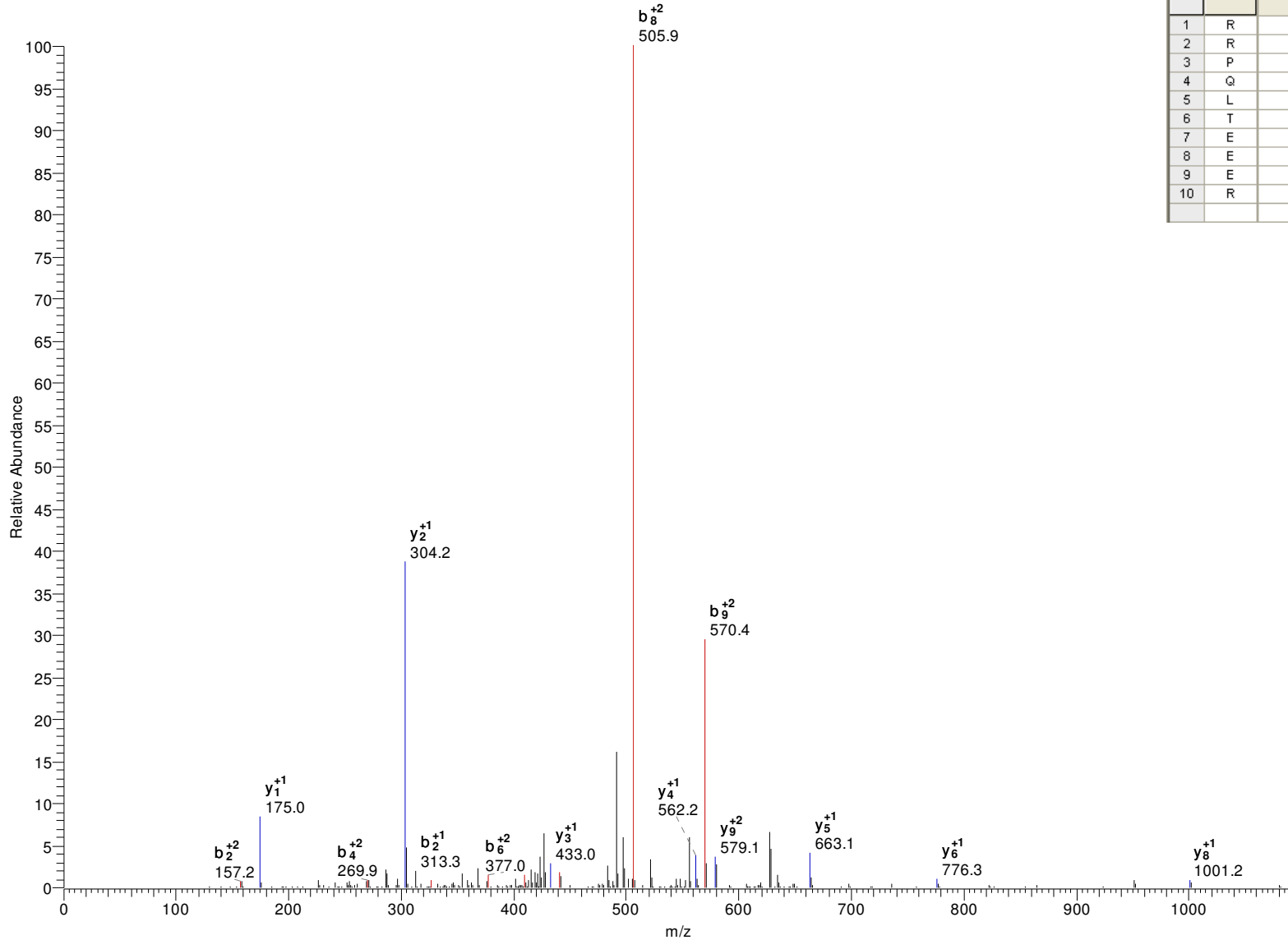
#2562-2562 NL: 1.99E2



	AA	B	Y	
		☑	☑	
1	D	116.03	-	12
2	N	230.08	1090.55	11
3	G	287.10	976.51	10
4	E	416.14	919.48	9
5	G	473.16	790.44	8
6	S	560.19	733.42	7
7	A	631.23	646.39	6
8	I	744.32	575.35	5
9	S	831.35	462.27	4
10	L	944.43	375.24	3
11	S	1031.46	262.15	2
12	R	-	175.12	1

gi|70882897|gb|EAN95839.1| hypothetical protein, conserved [*Trypanosoma cruzi*]
 K.RRPQLTEEER.A M+H=1313.692017 DeltaM=1.28528 z=3
 P(pep)=3.85E-4 Xcorr=2.66 DCn=0.31

#2148-2148 NL: 4.10E3



	AA	B	Y	
		✓	✓	
1	R	157.11	-	10
2	R	313.21	1157.59	9
3	P	410.26	1001.49	8
4	Q	538.32	904.44	7
5	L	651.40	776.38	6
6	T	752.45	663.29	5
7	E	881.50	562.25	4
8	E	1010.54	433.20	3
9	E	1139.58	304.16	2
10	R	-	175.12	1

-.VSESTWKAHTVLGPTDGDNR.-

P(pep)=1.01E-06

Xcorr=2.55

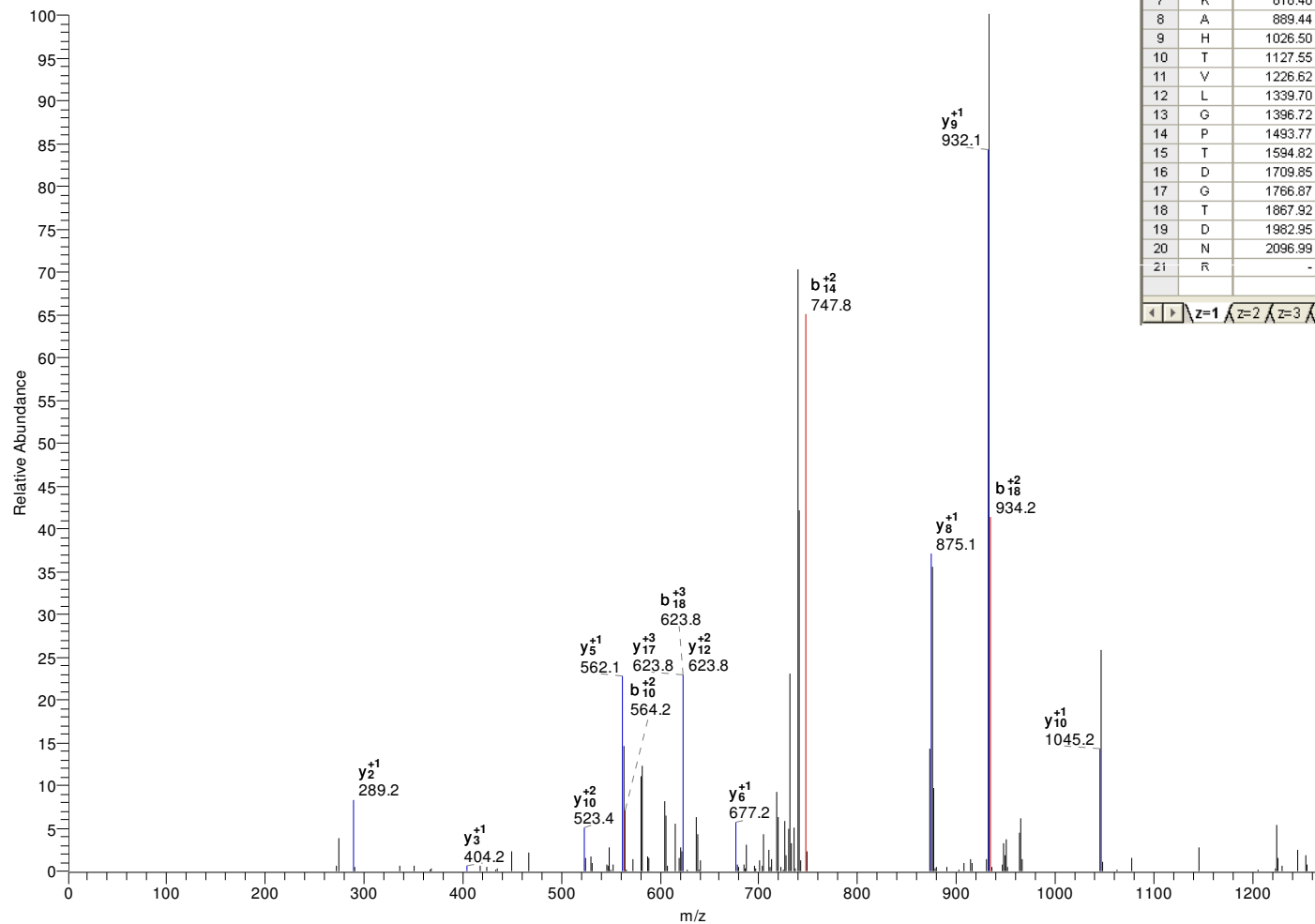
M+H=2271.100098

DCn=0.18

DeltaM=1.67179

z=3

#3519-3519 NL: 1.48E2



	AA	B	Y			AA	B	Y	
1	V	100.08	-	21	1	V	50.54	-	21
2	S	187.11	2172.03	20	2	S	94.06	1086.52	20
3	E	316.15	2085.00	19	3	E	158.58	1043.00	19
4	S	403.18	1955.96	18	4	S	202.09	978.48	18
5	T	504.23	1868.92	17	5	T	252.62	934.97	17
6	WV	690.31	1767.88	16	6	WV	345.66	884.44	16
7	K	818.40	1581.80	15	7	K	409.71	791.40	15
8	A	889.44	1453.70	14	8	A	445.22	727.36	14
9	H	1026.50	1382.67	13	9	H	513.75	691.84	13
10	T	1127.55	1245.61	12	10	T	564.28	623.31	12
11	V	1226.62	1144.56	11	11	V	613.81	572.78	11
12	L	1339.70	1045.49	10	12	L	670.35	523.25	10
13	G	1396.72	932.41	9	13	G	698.86	466.71	9
14	P	1493.77	875.39	8	14	P	747.39	438.20	8
15	T	1594.82	778.33	7	15	T	797.91	389.67	7
16	D	1709.85	677.28	6	16	D	855.43	339.15	6
17	G	1766.87	562.26	5	17	G	883.94	281.63	5
18	T	1867.92	505.24	4	18	T	934.46	253.12	4
19	D	1982.95	404.19	3	19	D	991.98	202.60	3
20	N	2096.99	289.16	2	20	N	1049.00	145.08	2
21	R	-	175.12	1	21	R	-	66.06	1

gi|70885177|gb|EAN98006.1| procyclic form surface glycoprotein, putative [*Trypanosoma cruzi*]

K.YAEDTNLR.S

M+H=981.463623

DeltaM=1.92766

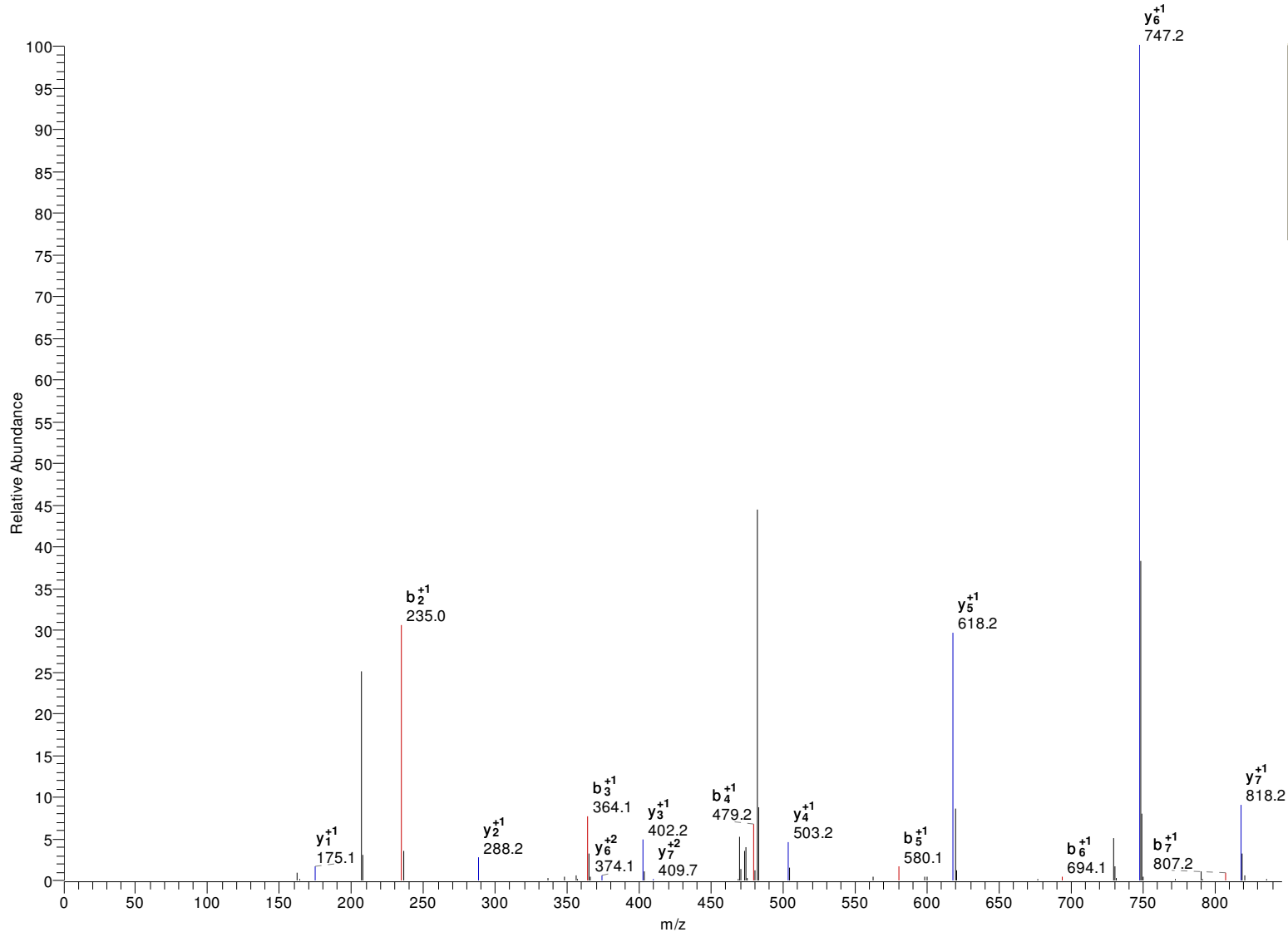
z=2

P(pep)=6.05E-05

Xcorr=2.51

DCn=0.33

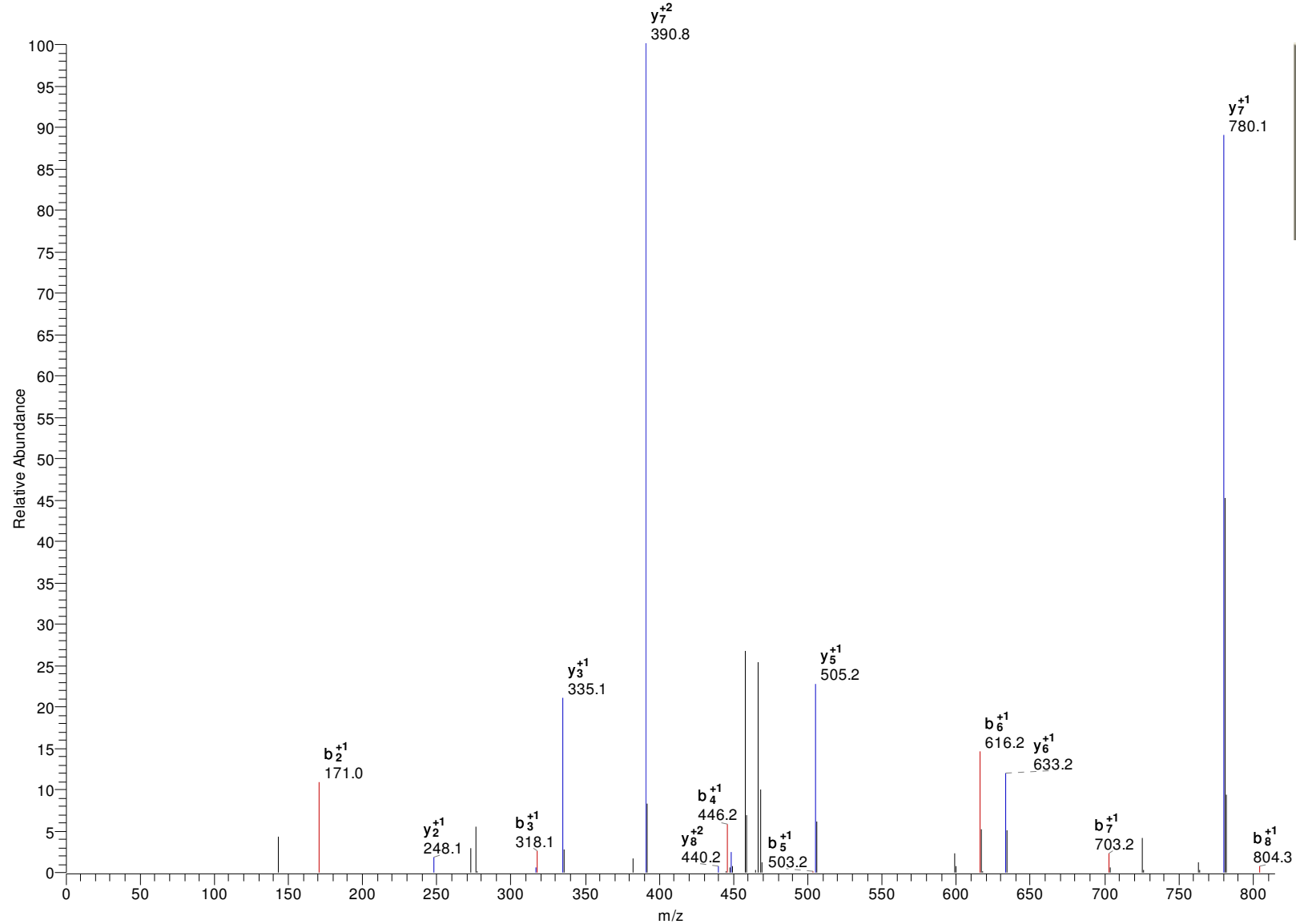
#2301-2301 NL: 6.14E2



	AA	B	Y	
1	Y	164.07	-	8
2	A	235.11	818.40	7
3	E	364.15	747.36	6
4	D	479.18	618.32	5
5	T	580.22	503.29	4
6	N	694.27	402.25	3
7	L	807.35	288.20	2
8	R	-	175.12	1

gi|70876860|gb|EAN90267.1| hypothetical protein, conserved [*Trypanosoma cruzi*]
-.AVFQGLSTK.- M+H=950.5305786 DeltaM=1.94139 z=2
P(pep)=3.25E-4 Xcorr=2.51 DCn=0.39

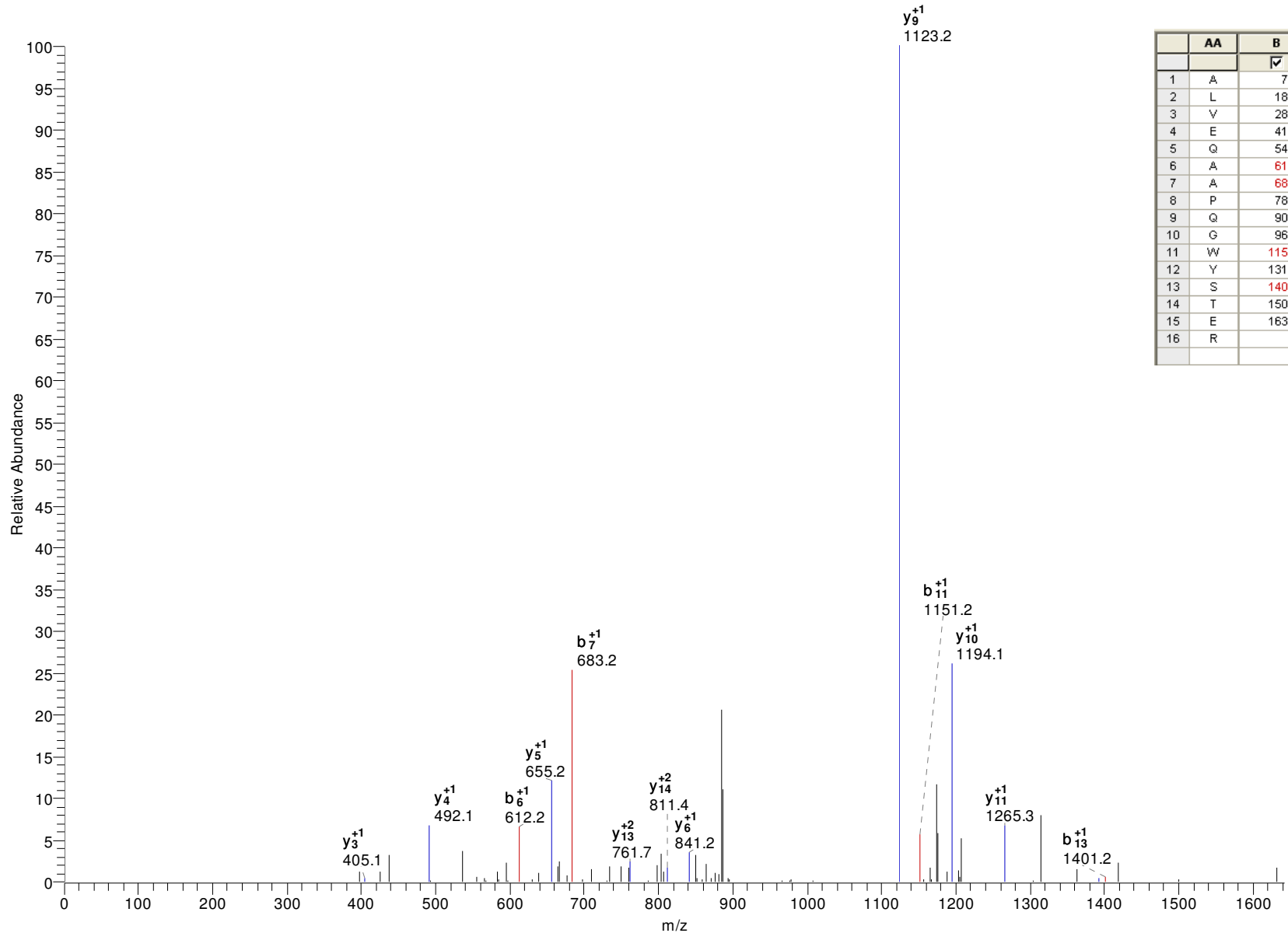
#3223-3223 NL: 2.48E2



	AA	B	Y	
		✓	✓	
1	A	72.04	-	9
2	V	171.11	879.49	8
3	F	318.18	780.43	7
4	Q	446.24	633.36	6
5	G	503.26	505.30	5
6	L	616.35	448.28	4
7	S	703.38	335.19	3
8	T	804.43	248.16	2
9	K	-	147.11	1

gi|70884806|gb|EAN97651.1| hypothetical protein, conserved [*Trypanosoma cruzi*]
 R.ALVEQAAPQGWYSTER.G M+H=1805.881714 DCn=0.14495 z=2
 P(pep)=6.35E-4 Xcorr=2.45 DCn=0.49

#3830-3830 NL: 2.60E2



	AA	B	Y	
		✓	✓	
1	A	72.04	-	16
2	L	185.13	1734.84	15
3	V	284.20	1621.76	14
4	E	413.24	1522.69	13
5	Q	541.30	1393.65	12
6	A	612.34	1265.59	11
7	A	683.37	1194.55	10
8	P	780.43	1123.52	9
9	Q	908.48	1026.46	8
10	G	965.51	898.41	7
11	W	1151.58	841.38	6
12	Y	1314.65	655.30	5
13	S	1401.68	492.24	4
14	T	1502.73	405.21	3
15	E	1631.77	304.16	2
16	R	-	175.12	1

gi|70879827|gb|EAN92970.1| hexose transporter, putative [*Trypanosoma cruzi*]

K.TPCLDDSR.C

M+H=963.4200439

DCn=1.57878

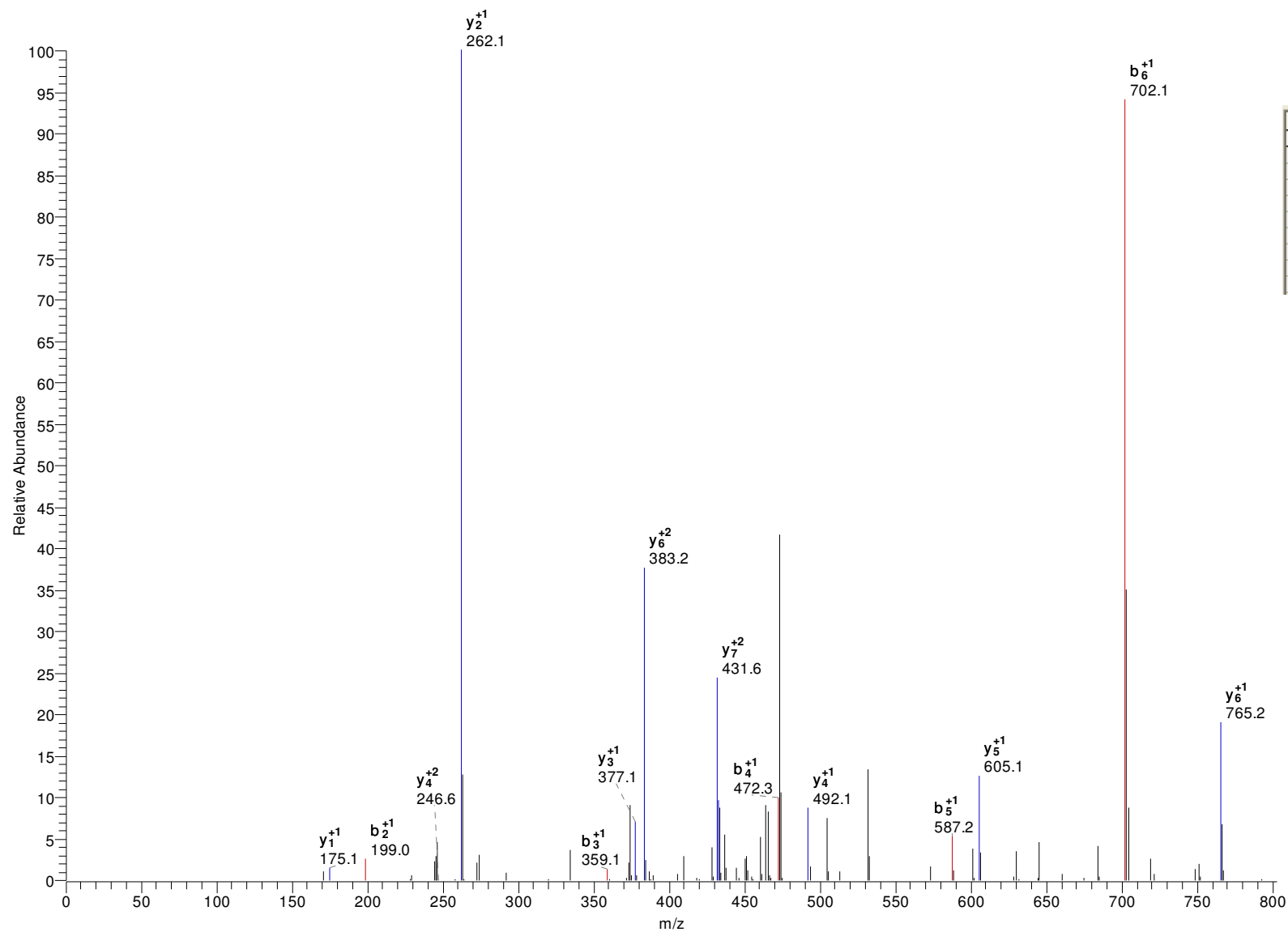
z=2

P(pep)=7.46E-05

Xcorr=2.36

DCn=0.28

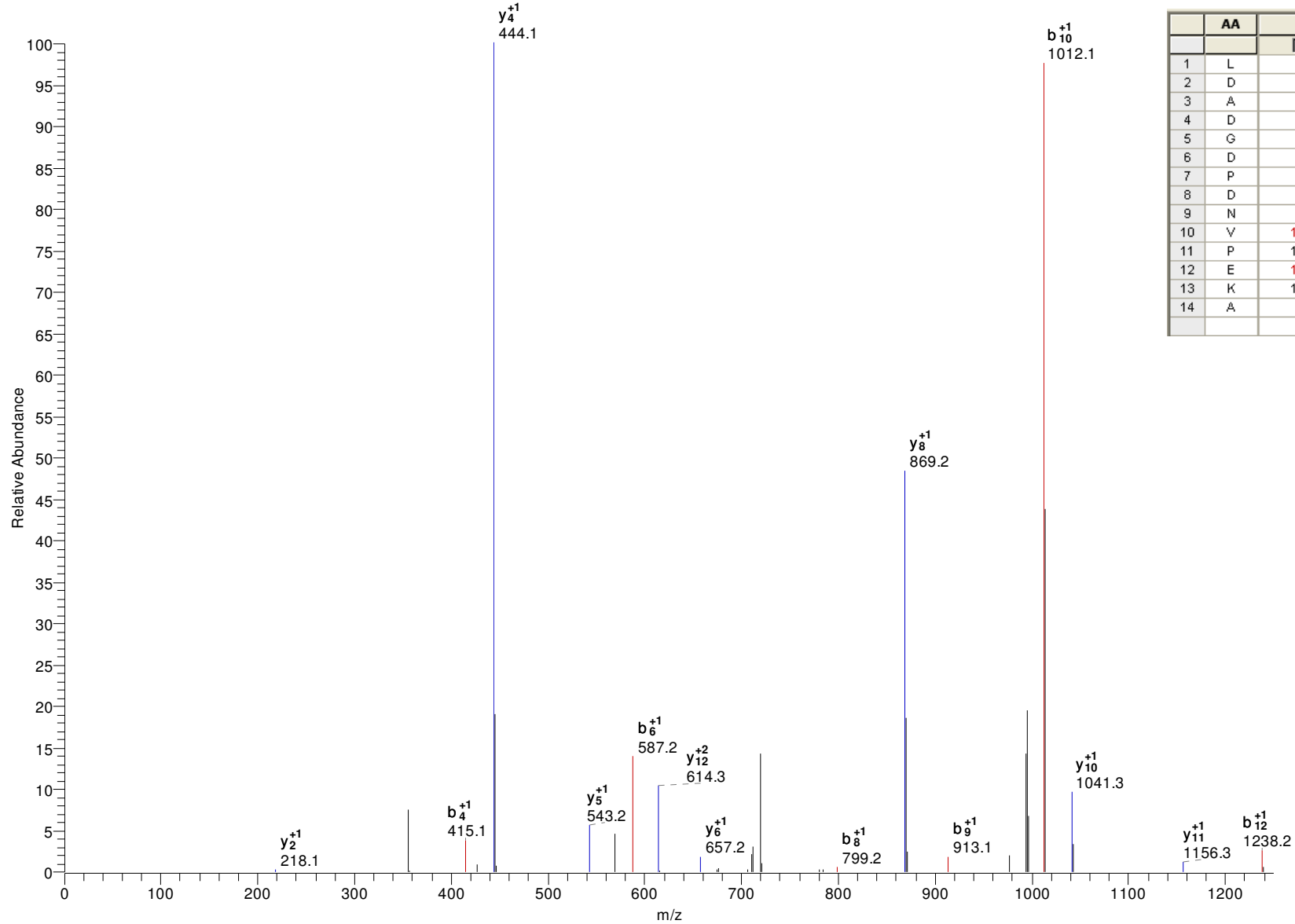
#2241-2241 NL: 4.47E2



	AA	B	Y	
1	T	102.05	-	8
2	P	199.11	862.37	7
3	C	359.14	765.32	6
4	L	472.22	605.29	5
5	D	587.25	492.20	4
6	D	702.28	377.18	3
7	S	789.31	262.15	2
8	R	-	175.12	1

gi|22091470|gb|AAM91818.1| flagellar calcium binding protein 3 [*Trypanosoma cruzi*]
 -.LDADGPDNVPEKA.- M+H=1455.65979 DeltaM=1.27336 z=2
 P(pep)=3.60E-4 Xcorr=2.35 DCn=0.29

#2886-2888 NL: 3.77E2



	AA	B	Y	
		✓	✓	
1	L	114.09	-	14
2	D	229.12	1342.58	13
3	A	300.16	1227.55	12
4	D	415.18	1156.51	11
5	G	472.20	1041.48	10
6	D	587.23	984.46	9
7	P	684.28	869.44	8
8	D	799.31	772.38	7
9	N	913.35	657.36	6
10	V	1012.42	543.31	5
11	P	1109.47	444.25	4
12	E	1238.52	347.19	3
13	K	1366.61	218.15	2
14	A	-	90.05	1

gi|70887268|gb|EAO00028.1| citrate synthase, putative [*Trypanosoma cruzi*]

R.RADNEAITAATK.T M+H=1260.654297

DeltaM=1.70598

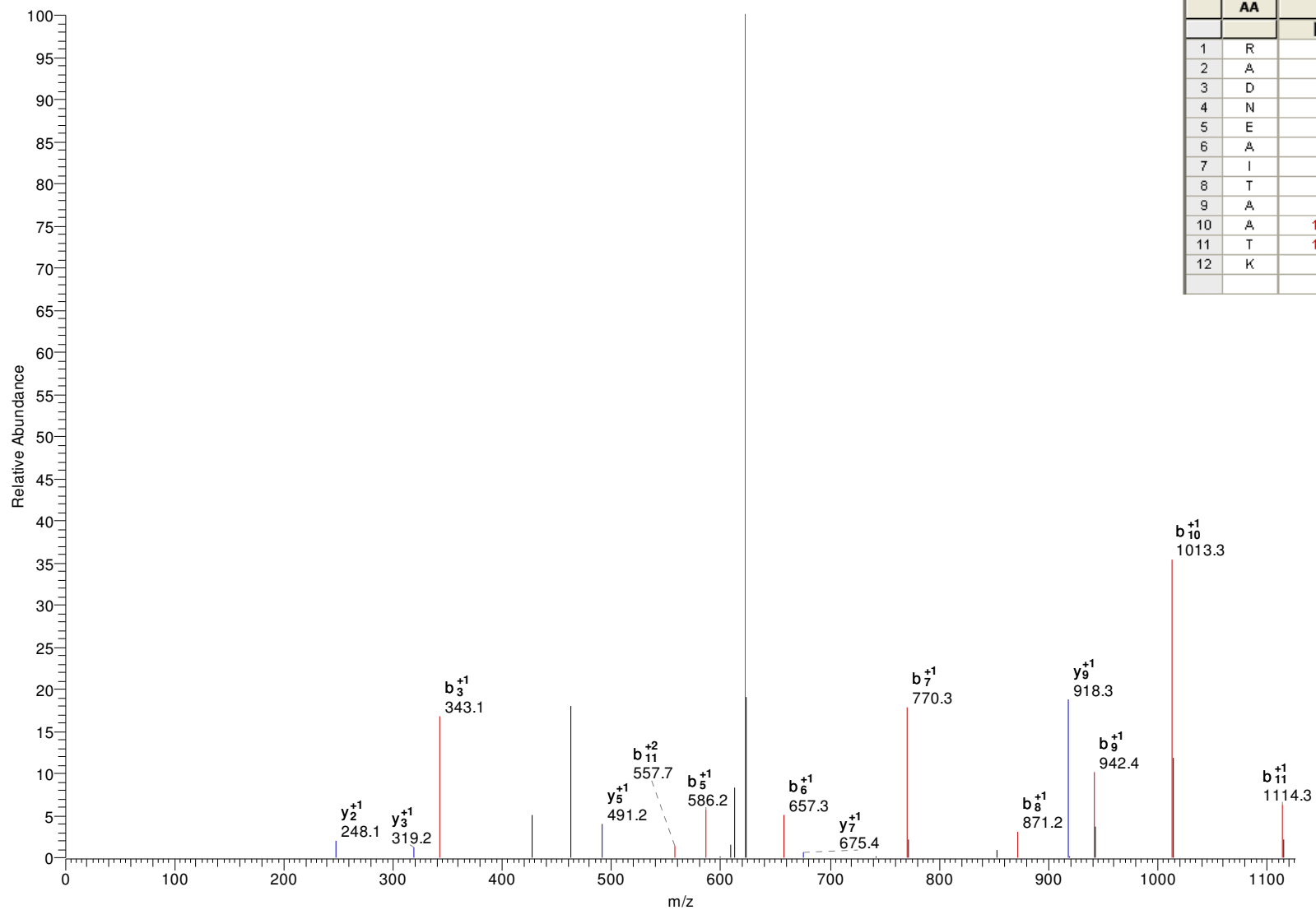
z=2

P(pep)=1.19E-4

Xcorr=2.34

DCn=0.27

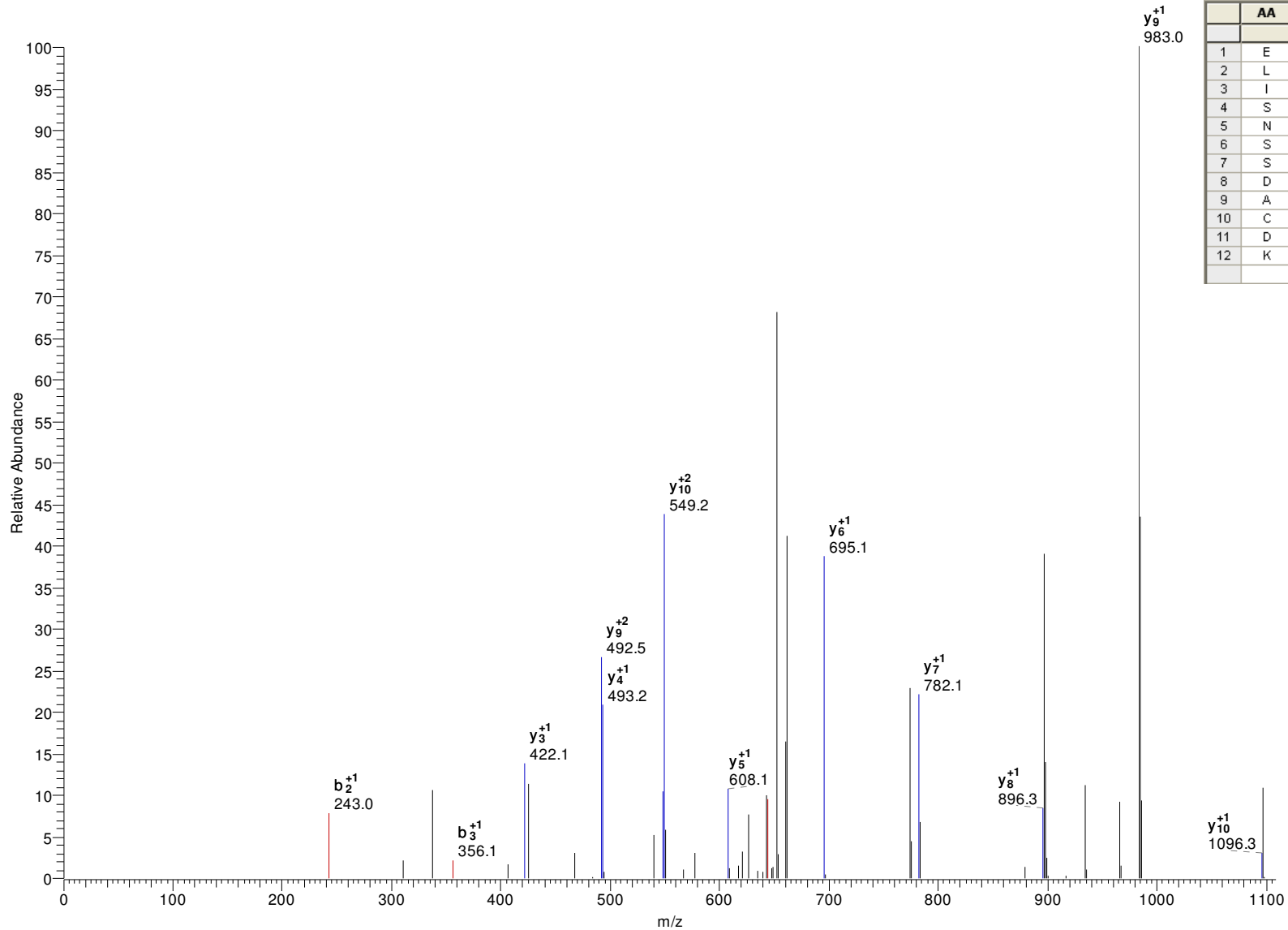
#2218-2218 NL: 7.40E1



	AA	B	Y	
		✓	✓	
1	R	157.11	-	12
2	A	228.15	1104.55	11
3	D	343.17	1033.52	10
4	N	457.22	918.49	9
5	E	586.26	804.45	8
6	A	657.30	675.40	7
7	I	770.38	604.37	6
8	T	871.43	491.28	5
9	A	942.46	390.23	4
10	A	1013.50	319.20	3
11	T	1114.55	248.16	2
12	K	-	147.11	1

gi|70879904|gb|EAN93041.1| heat shock protein 85, putative [*Trypanosoma cruzi*]
R.ELISNSSDACDK.I M+H=1338.584229 DeltaM=1.78288 z=2
P(pep)=4.83E-05 Xcorr=2.30 DCn=0.20

#2319-2319 NL: 1.06E2

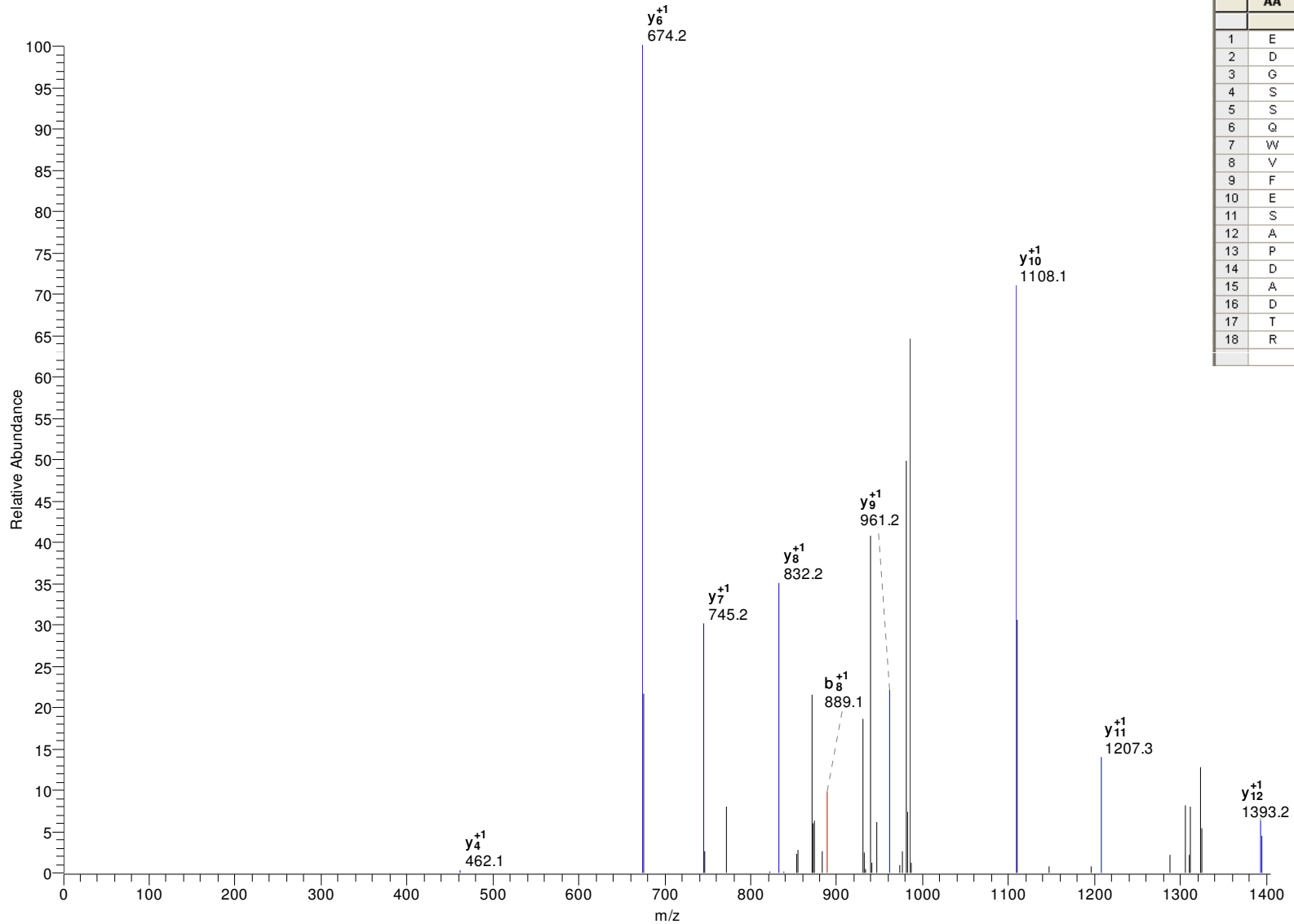


y₉⁺¹
983.0

	AA	B	Y	
		✓	✓	
1	E	130.05	-	12
2	L	243.13	1209.54	11
3	I	356.22	1096.46	10
4	S	443.25	983.37	9
5	N	557.29	896.34	8
6	S	644.32	782.30	7
7	S	731.36	695.27	6
8	D	846.38	608.23	5
9	A	917.42	493.21	4
10	C	1077.45	422.17	3
11	D	1192.48	262.14	2
12	K	-	147.11	1

gi|70881191|gb|EAN94237.1| hypothetical protein, conserved [*Trypanosoma cruzi*]
K.EDGSSQWVFESAPDADTR.V M+H=1996.851929 DeltaM=0.85784 z=2
P(pep)=9.11E-4 Xcorr=2.28 DCn=0.46

#4064-4064 NL: 5.70E1



	AA	B	Y	
		<input checked="" type="checkbox"/>	<input checked="" type="checkbox"/>	
1	E	130.05	-	18
2	D	245.08	1867.81	17
3	G	302.10	1752.78	16
4	S	389.13	1695.76	15
5	S	476.16	1608.73	14
6	Q	604.22	1521.70	13
7	W	790.30	1393.64	12
8	V	889.37	1207.56	11
9	F	1036.44	1108.49	10
10	E	1165.48	961.42	9
11	S	1252.51	832.38	8
12	A	1323.55	745.35	7
13	P	1420.60	674.31	6
14	D	1535.63	577.26	5
15	A	1606.67	462.23	4
16	D	1721.69	391.19	3
17	T	1822.74	276.17	2
18	R	-	175.12	1

gi|70871653|gb|EAN85763.1| small GTP-binding protein Rab1, putative [*Trypanosoma cruzi*]

-.EASNVEEAFTR.-

M+H=1252.580444

DeltaM=0.87505

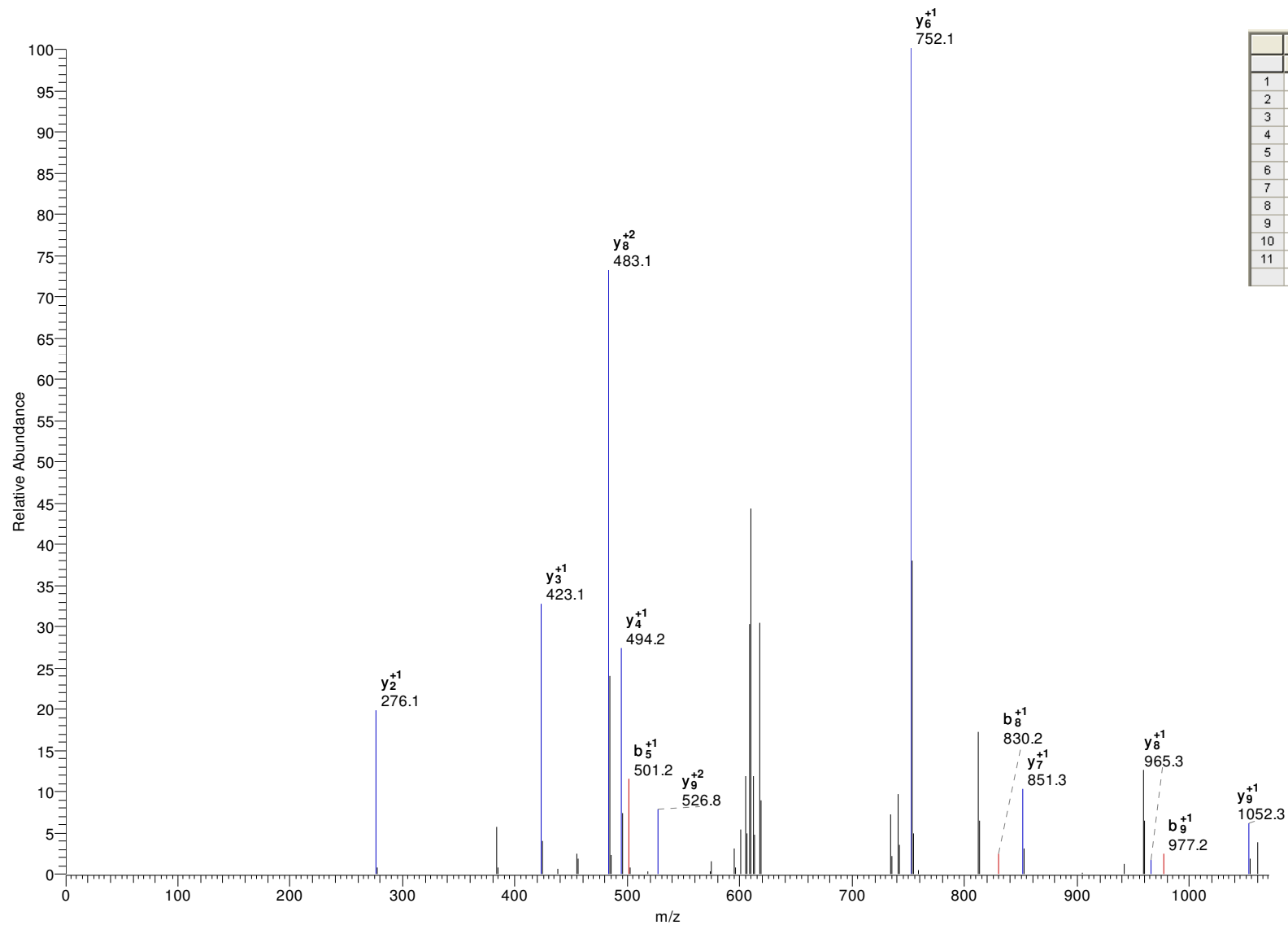
z=2

P(pep)=6.96E-4

Xcorr=2.18

DCn=0.31

#3318-3318 NL: 1.81E2



	AA	B	Y	
1	E	130.05	-	11
2	A	201.09	1123.54	10
3	S	288.12	1052.50	9
4	N	402.16	965.47	8
5	V	501.23	851.43	7
6	E	630.27	752.36	6
7	E	759.32	623.31	5
8	A	830.35	494.27	4
9	F	977.42	423.24	3
10	T	1078.47	276.17	2
11	R	-	175.12	1

gi|70876776|gb|EAN90192.1| *trans*-sialidase, putative [*Trypanosoma cruzi*]

K.NVFLYNRPLNPTEM*R.A

M+H=1879.948329

DeltaM=0.73312

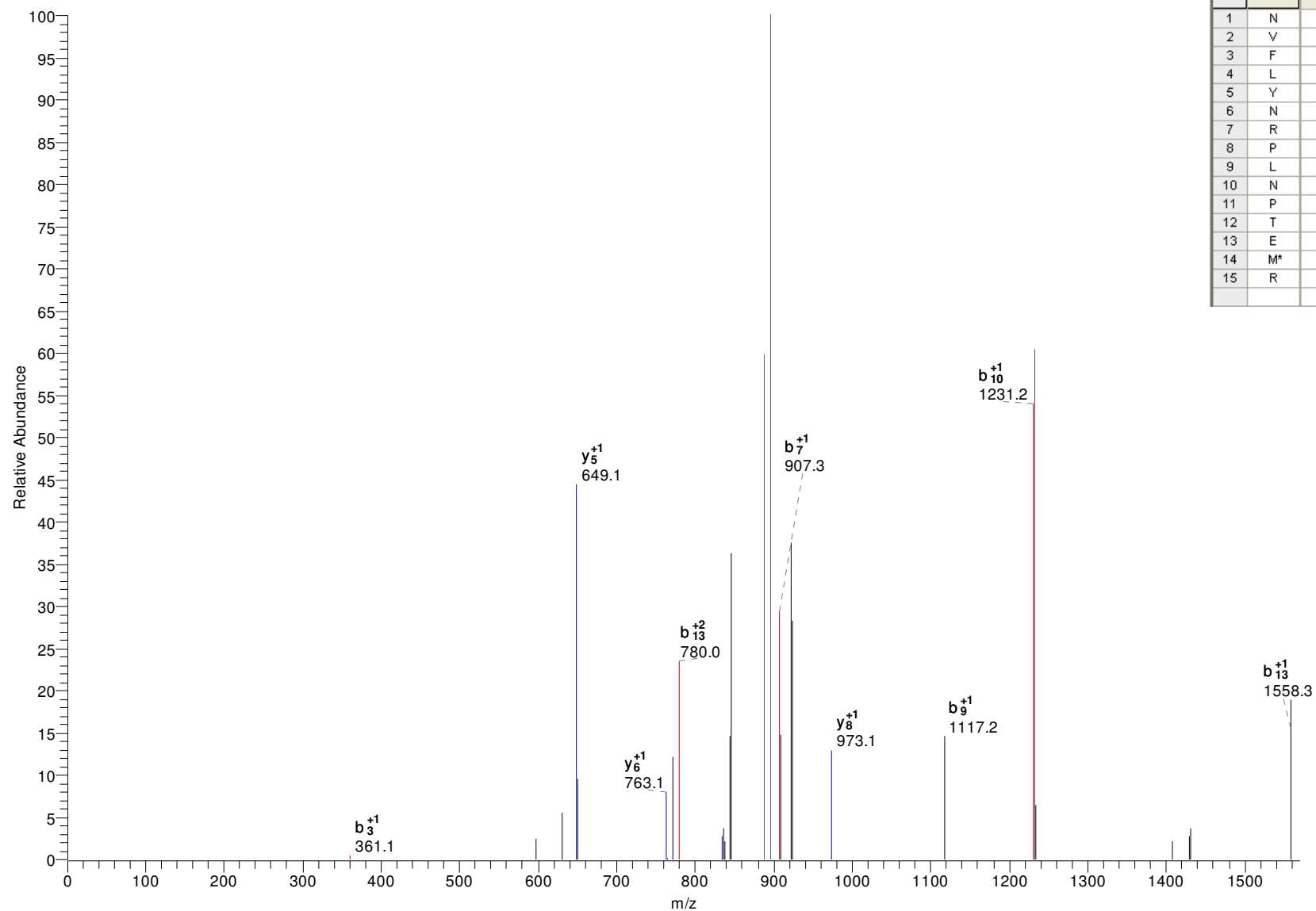
z=2

P(pep)=9.83E-4

Xcorr=2.06

DCn=0.34

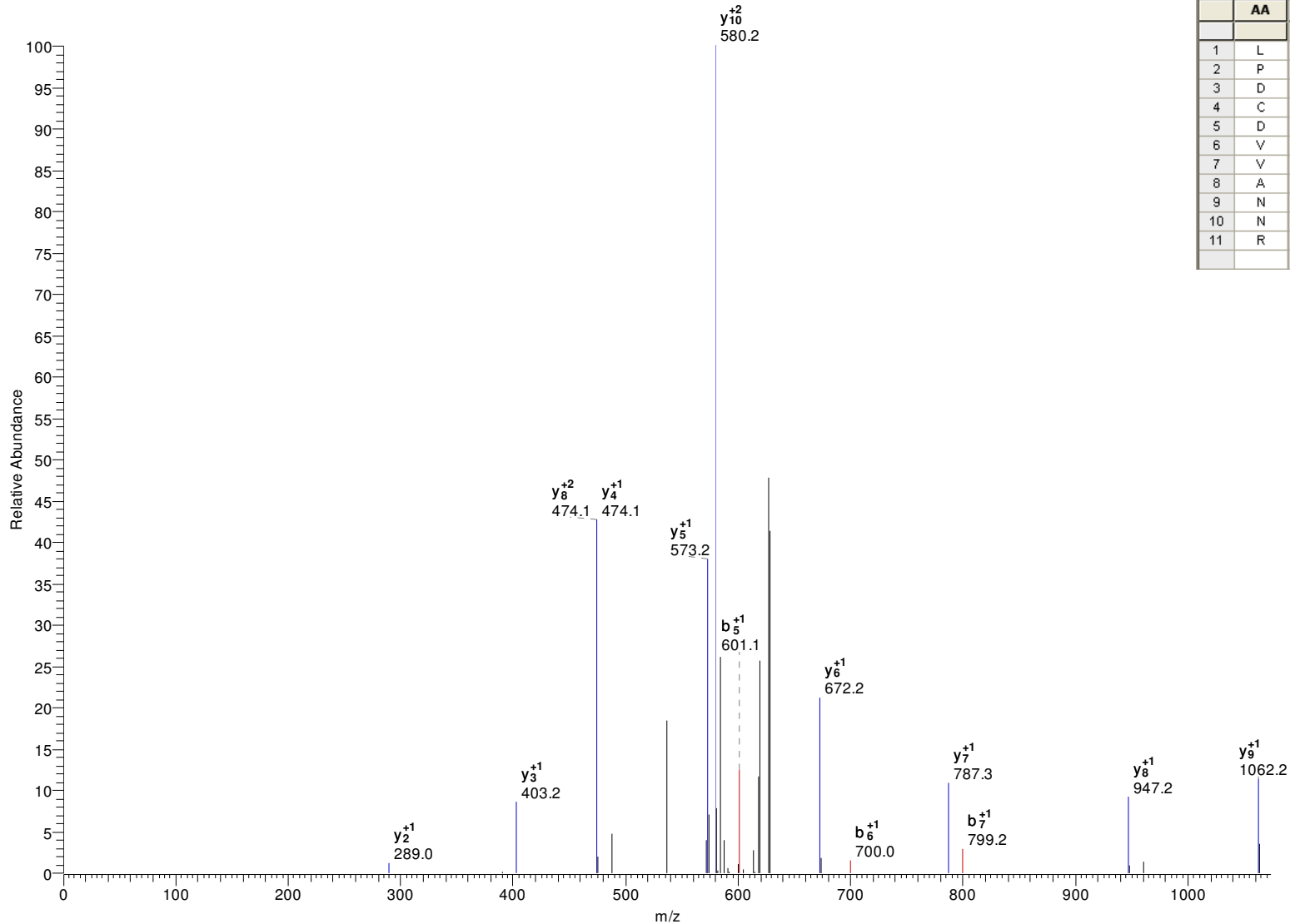
#3723-3723 NL: 5.62E1



	AA	B	Y	
		✓	✓	
1	N	115.05	-	15
2	V	214.12	1765.91	14
3	F	361.19	1666.84	13
4	L	474.27	1519.77	12
5	Y	637.33	1406.68	11
6	N	751.38	1243.62	10
7	R	907.48	1129.58	9
8	P	1004.53	973.48	8
9	L	1117.62	876.42	7
10	N	1231.66	763.34	6
11	P	1328.71	649.30	5
12	T	1429.76	552.24	4
13	E	1558.80	451.20	3
14	M*	1705.84	322.15	2
15	R	-	175.12	1

gi|70881221|gb|EAN94265.1| hypothetical protein, conserved [Trypanosoma cruzi]
 K.LPDCDVVANNR.N M+H=1272.600098 DeltaM=0.25688 z=2
 P(pep)=8.01E-06 Xcorr=2.03 DCn=0.47

#2545-2545 NL: 1.02E2



	AA	B	Y	
		<input checked="" type="checkbox"/>	<input checked="" type="checkbox"/>	
1	L	114.09	-	11
2	P	211.14	1159.52	10
3	D	326.17	1062.46	9
4	C	486.20	947.44	8
5	D	601.23	787.41	7
6	V	700.30	672.38	6
7	V	799.37	573.31	5
8	A	870.40	474.24	4
9	N	984.45	403.20	3
10	N	1098.49	289.16	2
11	R	-	175.12	1

gi|3080753|gb|AAC14692.1| glutamate dehydrogenase [*Trypanosoma cruzi*]

-.TNYVNGANIAGFVK.-

M+H=1467.759033

DeltaM=1.08403

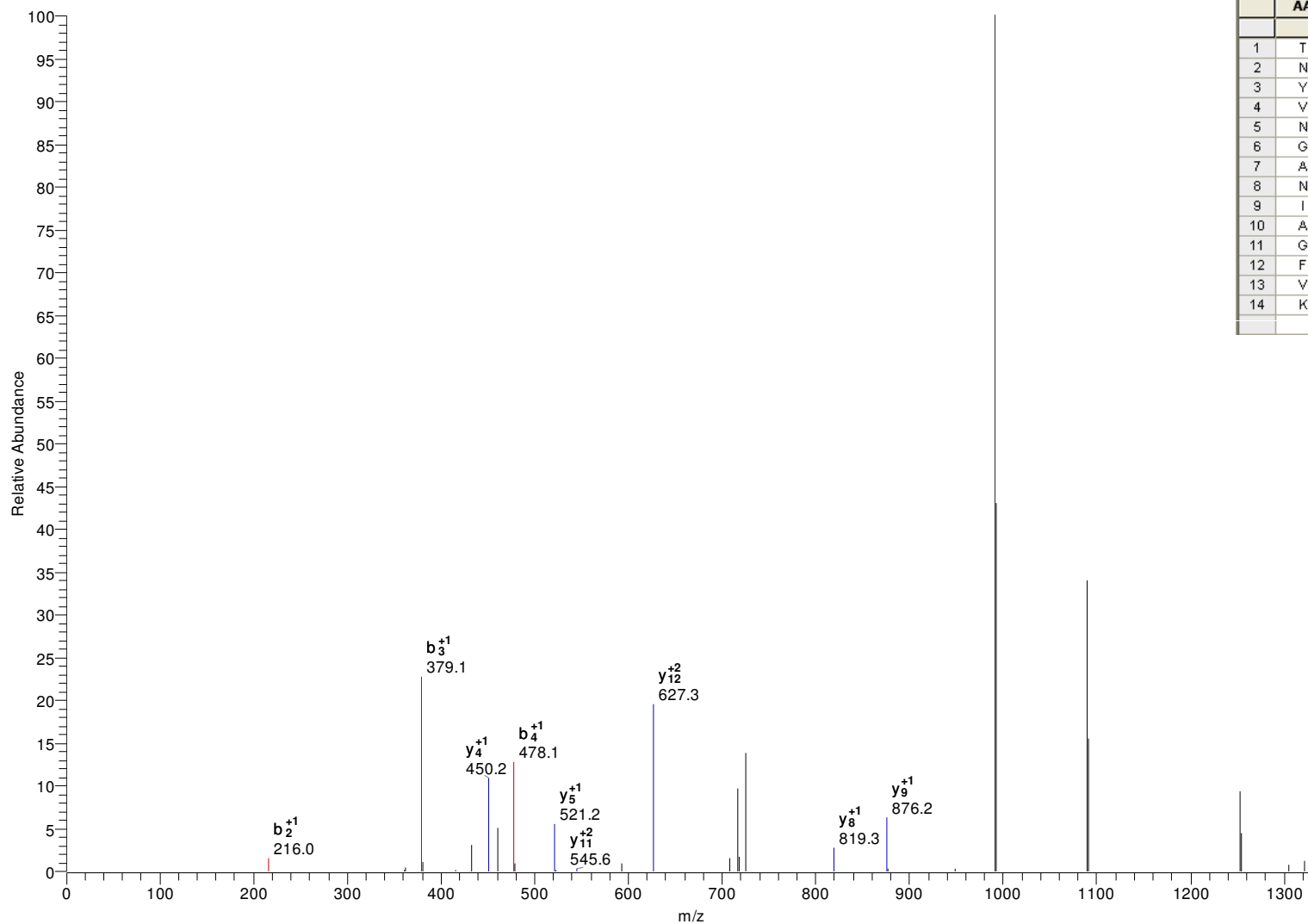
z=2

P(pep)=3.63E-4

Xcorr=2.02

DCn=0.25

#4136-4136 NL: 1.81E2



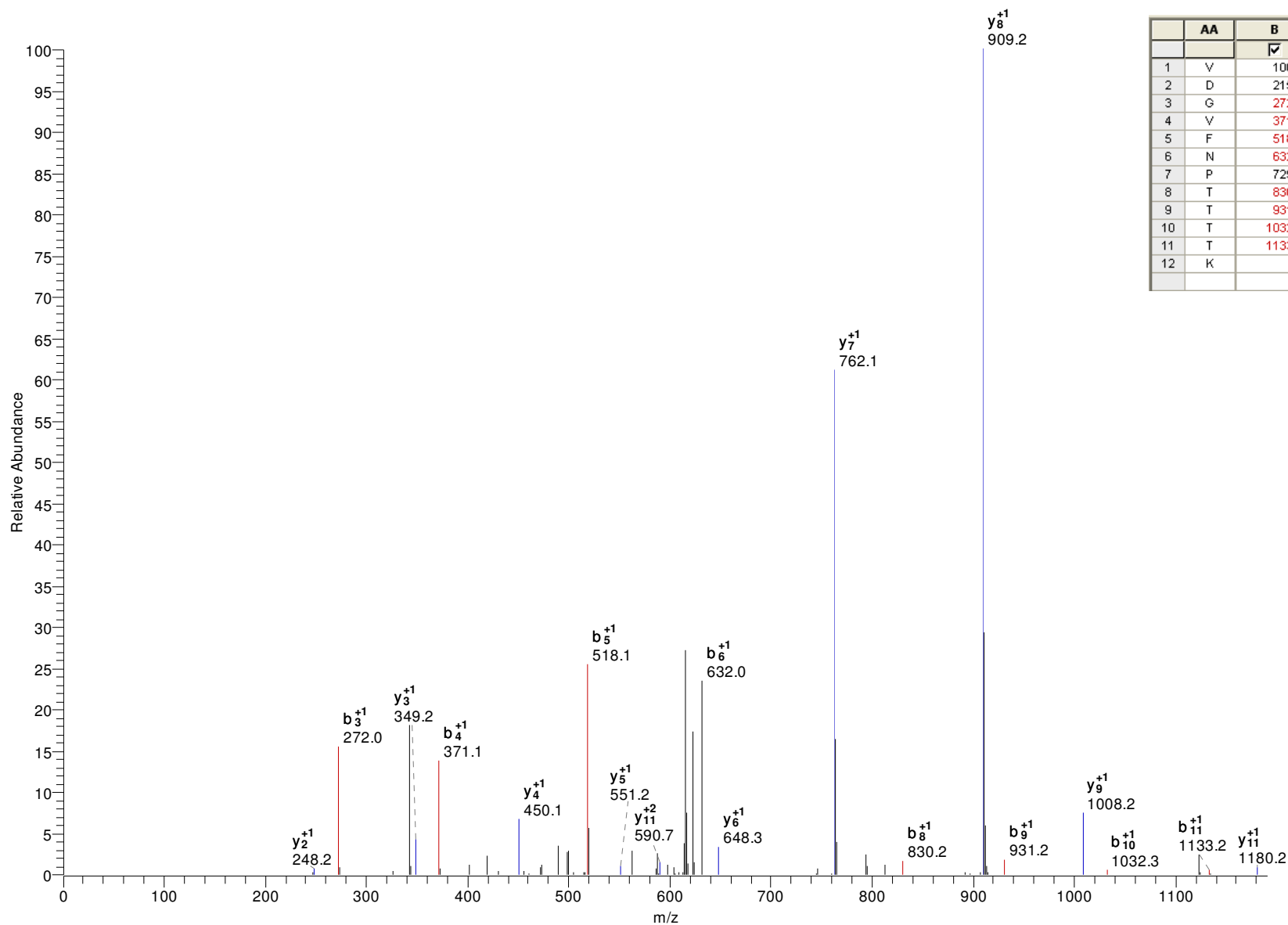
	AA	B	Y	
		✓	✓	
1	T	102.05	-	14
2	N	216.10	1366.71	13
3	Y	379.16	1252.67	12
4	V	478.23	1089.61	11
5	N	592.27	990.54	10
6	G	649.29	876.49	9
7	A	720.33	819.47	8
8	N	834.37	748.44	7
9	I	947.46	634.39	6
10	A	1018.50	521.31	5
11	G	1075.52	450.27	4
12	F	1222.59	393.25	3
13	V	1321.65	246.18	2
14	K	-	147.11	1

gi|477257|pir||A48458 gp85/sialidase homolog - *Trypanosoma cruzi* (fragment)

-.VDGVFNPTTTTK.- M+H=1279.652832 DeltaM=1.72319 z=2

P(pep)=2.40E-4 Xcorr=2.88 DCn=0.44

#3046-3046 NL:3.86E2



	AA	B	Y	
		✓	✓	
1	V	100.08	-	12
2	D	215.10	1180.58	11
3	G	272.12	1065.56	10
4	V	371.19	1008.54	9
5	F	518.26	909.47	8
6	N	632.30	762.40	7
7	P	729.36	648.36	6
8	T	830.40	551.30	5
9	T	931.45	450.26	4
10	T	1032.50	349.21	3
11	T	1133.55	248.16	2
12	K	-	147.11	1