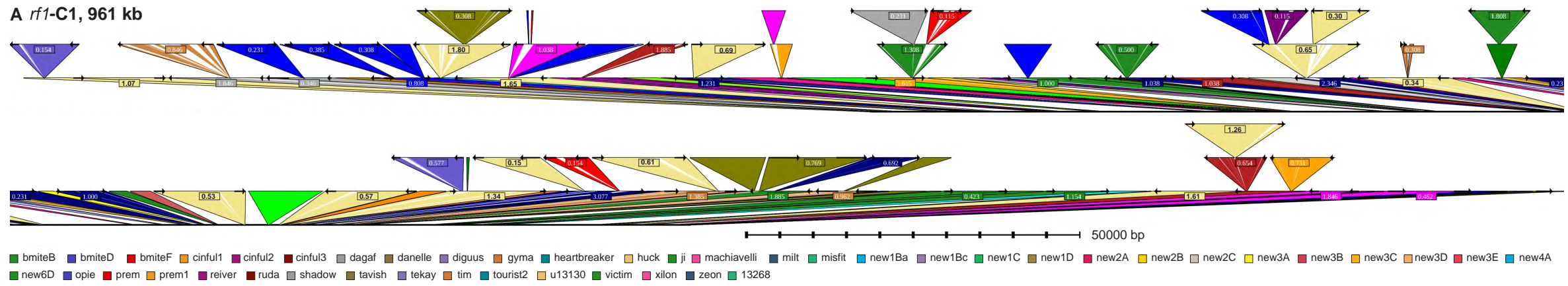


**A** *rf1-C1*, 961 kb



**B** *rf1-C2*, 594 kb

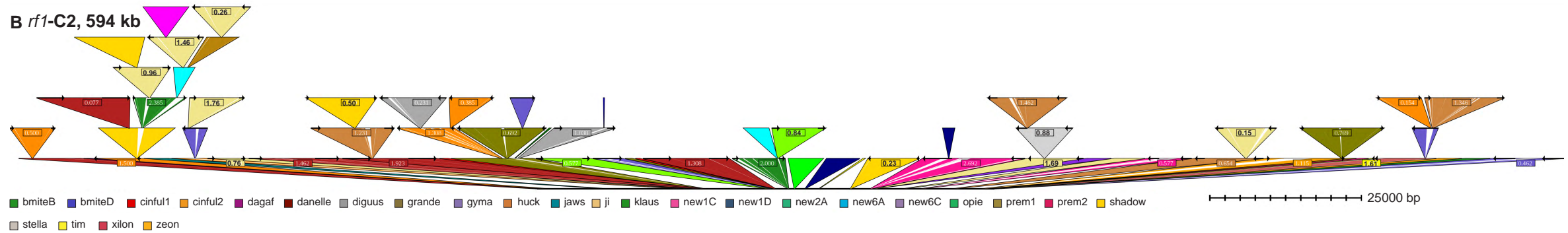


Figure 3. TEEnest Graphical Display of Maize Sequence Contigs.

(A) TEEnest insertion display output of *rf1-C1* 961 kb maize contig, split into two sections. (B) TEEnest insertion display output of *rf1-C2* 594 kb maize contig. Transposable elements are shown as triangles inserted into the black DNA line, a legend of TE families is shown below.