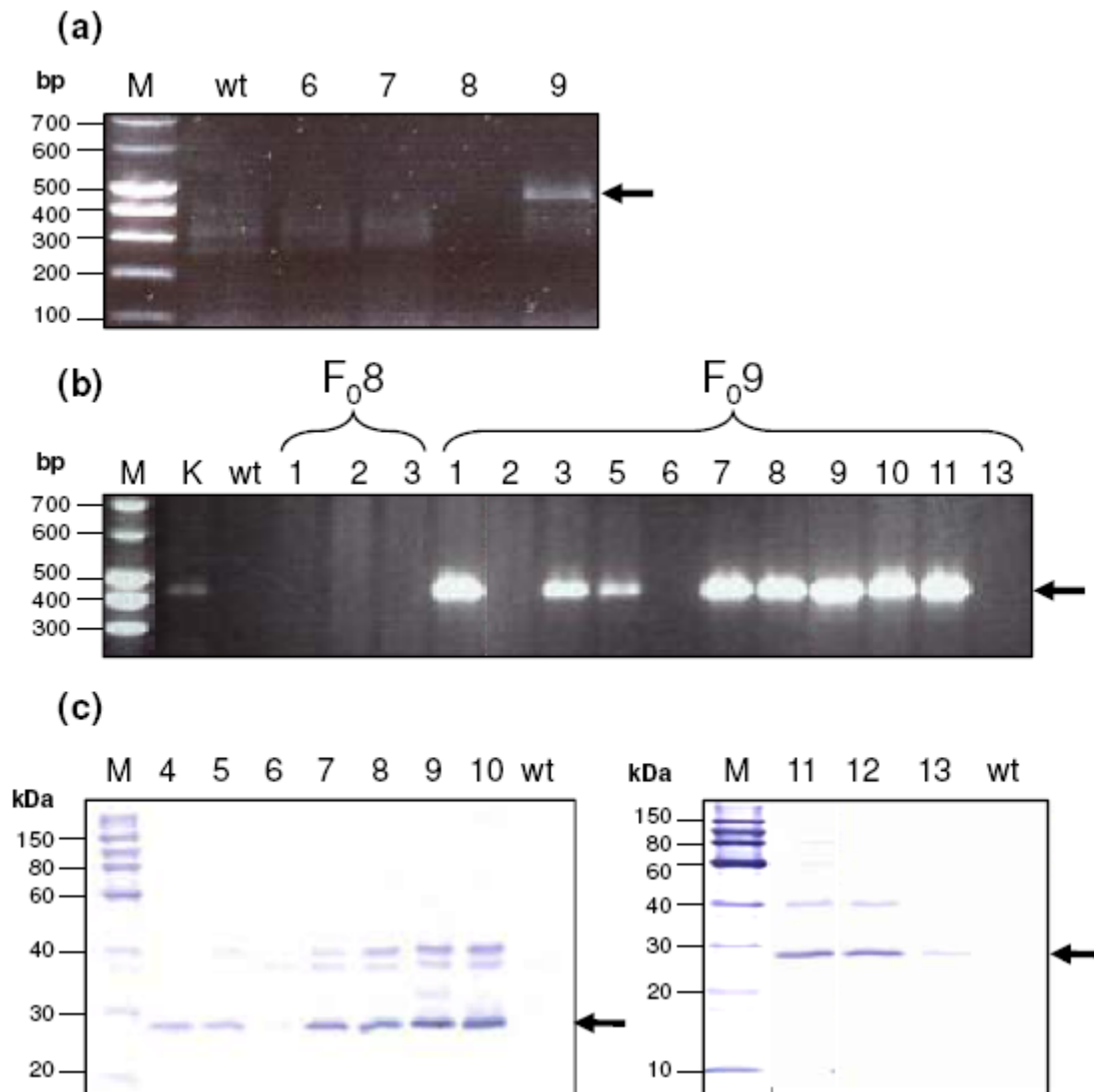


**Additional file 1.** Characterization of AB28-transgenic pea lines.



**(a)** PCR analysis of the leaf material from F<sub>0</sub> plants 6, 7, 8 and 9. Lanes: M, SmartLadder SF DNA marker (Eurogentec, Liege, Belgium); wt, sample from non-transgenic pea plant. **(b)** PCR analysis of the F<sub>1</sub> transgenic plants derived from F<sub>0</sub> plants 8 and 9. Lanes: K, positive control; M, SmartLadder SF DNA marker (Eurogentec); wt, sample from the non-transgenic pea plants. The positions of the specific DNA bands of 450 bp are indicated. **(c)** Western blot analysis of F<sub>1</sub> seeds derived from the F<sub>0</sub> plant 9 for scFv expression. Lanes: M, molecular weight markers (10-150 kDa PLUS, Serva); wt, samples from non-transgenic seeds; 4-13, samples of the accordingly numbered seeds. Positions of specific protein bands of approx. 25 kDa are indicated with arrows.