

¹ Con = Control (placebo); E = oral 17 β -Estradiol; P = oral micronized progesterone; T = testosterone administered via subcutaneous pellets; TC, total cholesterol; LDL, low density lipoprotein; VLDL, very low density lipoprotein; HDL, high density lipoprotein. *n* = 7, 8, and 10 for Con, E+P, and E+P+T groups, respectively, for all measures.

² Values represent mean \pm standard error.

³ For conversion to SI units (mmol/l), divide by 38.67 for total cholesterol, LDL+VLDL, and HDL, and by 88.57 for triglycerides.

⁴ Letters indicate significant differences with control group (^a*P* < 0.05, ^b*P* < 0.01) or with E+P group (^c*P* < 0.05).

660

Supplementary Table 1. Primer / probe sets for target genes evaluated by qRT-PCR.

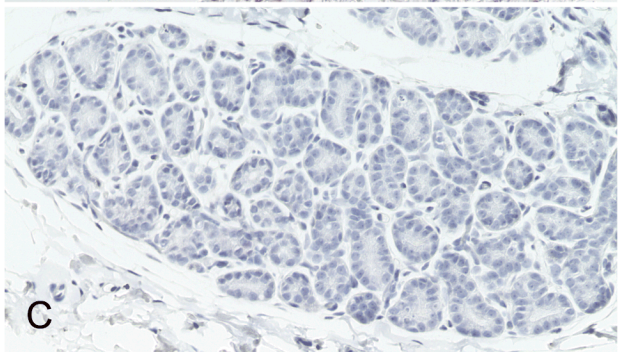
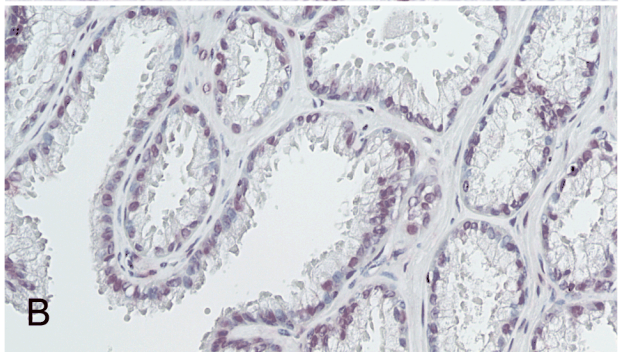
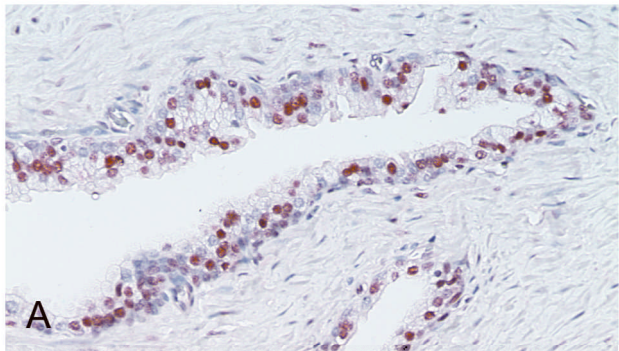
<i>Gene ID</i>	<i>GenBank #</i>	<i>Species</i>	<i>ABI assay ID</i>
<i>ACTB</i>	DQ464112	<i>Mf</i>	(custom)
<i>AR</i>	NM000044	<i>Mf</i>	(custom)
<i>ESR1</i>	DQ469336	<i>Mf</i>	(custom)
<i>GAPDH</i>	DQ464111	<i>Mf</i>	(custom)
<i>KLK3</i>	NM001648.2	<i>Mf</i>	(custom)
<i>MKI67</i>	NM002417.3	<i>Hs</i>	Hs00606991_m1
<i>PGR</i>	NM000926	<i>Hs</i>	Hs00172183_m1
<i>STAT5A</i>	NM003152	<i>Mm</i>	Rh02844604_m1

Hs, *Homo sapiens*; *Mf*, *Macaca fascicularis* (cynomolgus macaque); *Mm*, *Macaca mullata* (rhesus macaque)

Type of file: figure

Label: 3

Filename: suppl fig1 AR.tif



Type of file: figure

Label: 4

Filename: supp fig 2 histo mg.tif

