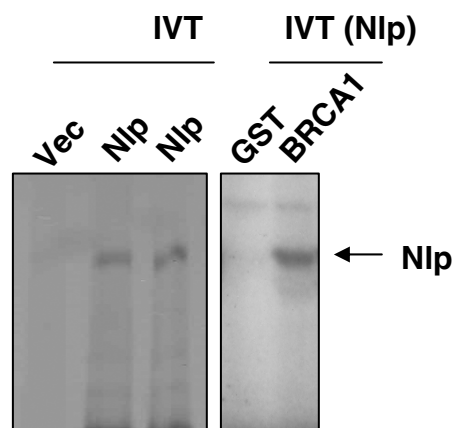
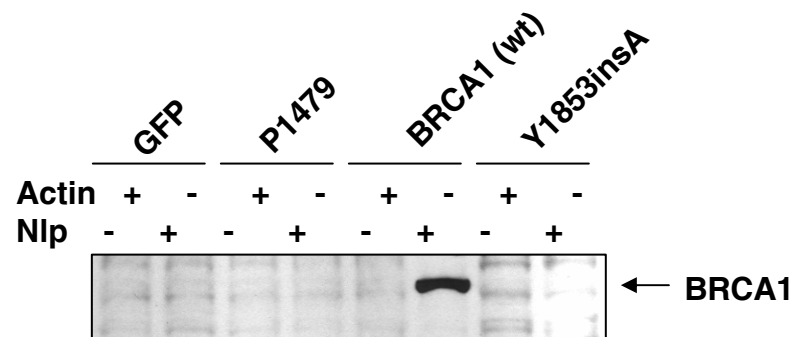


### Supplemental Materials

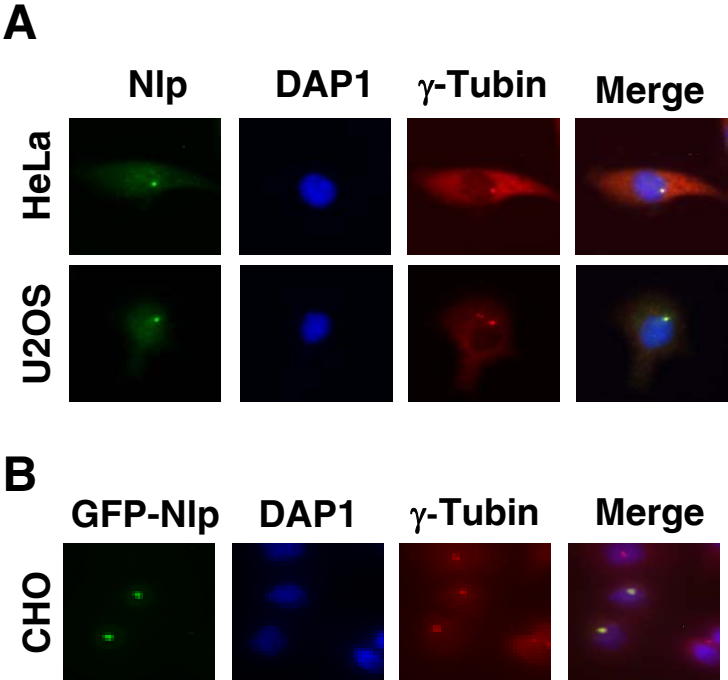
Supplemental Fig-1. (A) Nlp was produced by *in vitro* translation (left panel) and pulled down by GST-BRA1 (right panel). (B) Cellular lysates isolated from HCC1937 cells transfected with wt BRCA1 or mutant BRCA1 (P1479R and Y1835insA) expression vectors were immunoprecipitated with anti-Nlp or Actin antibodies. The immuno-complexes were analyzed with anti-BRCA1 antibody.

Supplemental Fig-2. (A) HeLa and U2OS cells were fixed and incubated with antibodies to  $\gamma$ -tubulin and Nlp. After washing, cells were incubated with Cy3- or Cy4-conjugated goat anti mouse IgG and visualized for Nlp (green spots) and  $\gamma$ -tubulin (red spots). (B) CHO cells were transfected with pEGFP-Nlp. 48 hours post-transfection, cells were fixed, stained with antibody to  $\gamma$ -tubulin and DAPI, and examined for green fluorescent protein (GFP, green spots) and  $\gamma$ -tubulin (red spots).

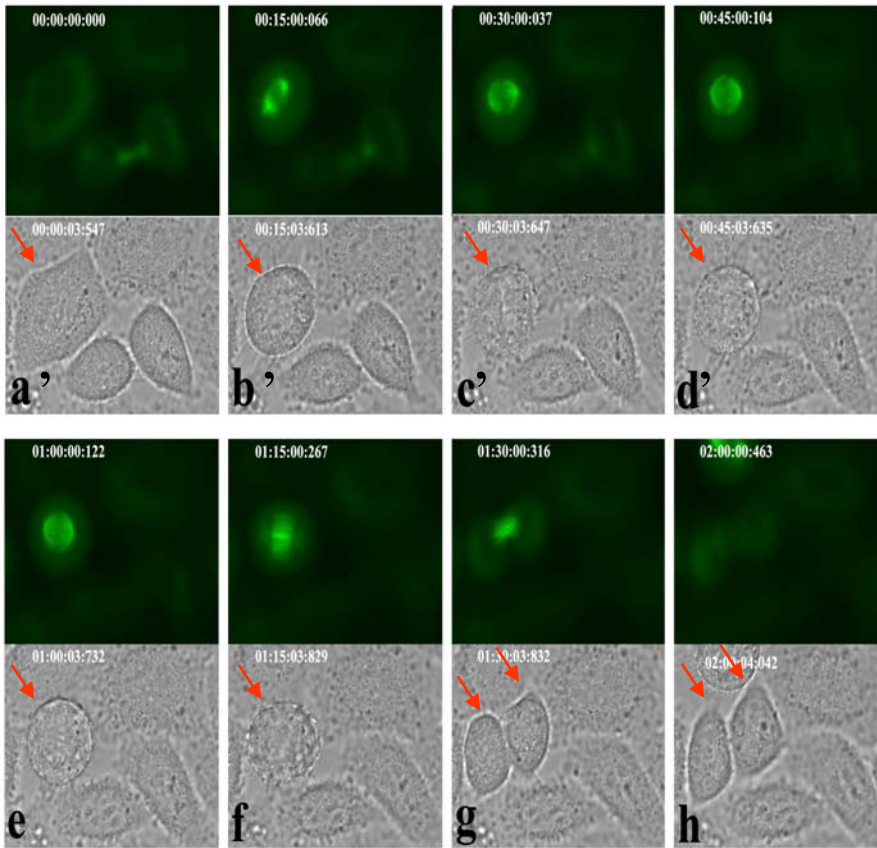
Supplemental Fig-3. (A) HeLa cells expressing GFP- $\alpha$ -tubulin were treated with non-specific siRNA and followed by analysis with time-lapse images. Cells exhibited normal spindle formation and mitotic process. Arrows point a successful completion of mitosis. (B) HeLa cells expressing GFP- $\alpha$ -tubulin were transfected with Nlp siRNA, and subjected to analysis of time-lapse images. Cells silenced for Nlp revealed abnormal spindle structures. These cells were unable to complete division (as shown by arrows).

**A****B**

Supplemental Fig-2



**A**



**B**

