

**Supplementary information for:**

**A HUMAN EMBRYONIC KIDNEY 293T CELL LINE MUTATED AT THE  
GOLGI  $\alpha$ -MANNOSIDASE II LOCUS**

Max Crispin, Veronica T. Chang, David J. Harvey, Raymond A. Dwek,  
Edward J. Evans, David I. Stuart, E. Yvonne Jones, J. Michael Lord,  
Robert A. Spooner and Simon J. Davis

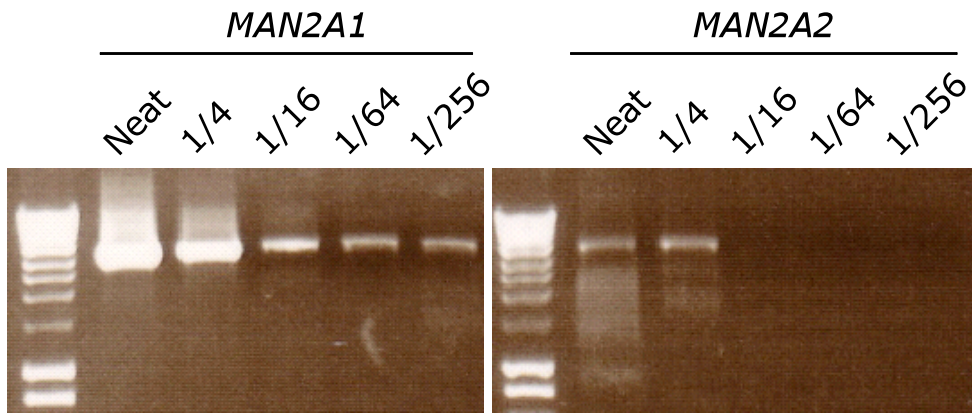


Figure S1. PCR analysis of the relative levels of expression of *MAN2A1* and *MAN2A2* in HEK 293T cells. Serial dilutions of cDNA were prepared from HEK 293T cells and amplified by PCR using primers specific for each gene and matched for hybridization potential. Numbers over each lane refer to the fold dilution of cDNA used in each PCR reaction. *MAN2A2* transcripts were found to be expressed at levels >64 fold lower than that of *MAN2A1* transcripts.