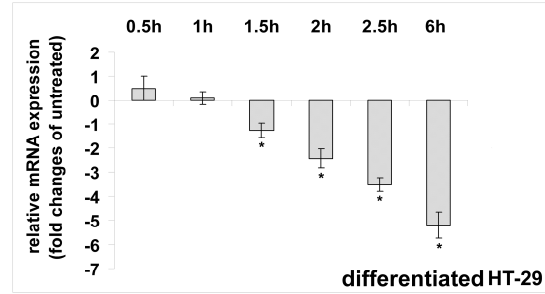
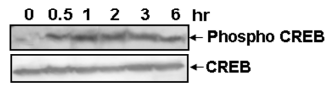


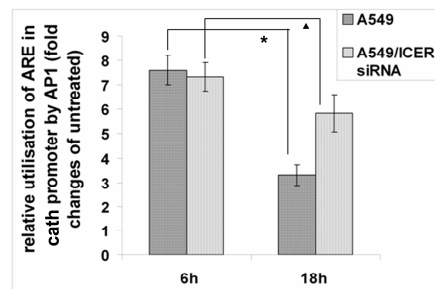
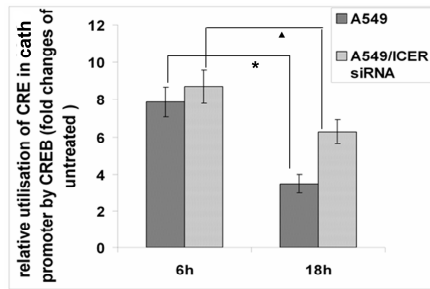
(S1)



(S2)



(S3)



Supplementary figure Legends:

Fig S1. Downregulation of cathelicidin expression in NaB-differentiated HT-29 cells. NaB-differentiated (4 mM, 48 hours) HT-29 cells were stimulated with FSK for the indicated time points. Cathelicidin mRNA expression was analyzed by qRT-PCR and data presented as in Fig 1B. The experiment was performed thrice, each time in triplicate and one representative data are shown here.

Fig S2. HT-29 cells were stimulated with FSK for the indicated durations and the total cell lysates were subjected to western blot analysis using phosphor-CREB and CREB (total) antibodies.

Fig S3. ChIP assays were performed with the nuclear extracts of parental or ICER knocked-down A549 cells that were either left unstimulated or stimulated with FSK for 6 hours and 18 hours. DNA/protein complexes were immunoprecipitated with CREB (left) or AP-1 (c-jun and c-fos) (right) antibodies along with RNA pol II antibodies in both cases and the protein-bound DNAs were amplified by qPCR using CRE, ARE and GAPDH sequence-specific primers as above. Data presented as the ratio of the amplified DNAs normalized against GAPDH of the stimulated and unstimulated cells.