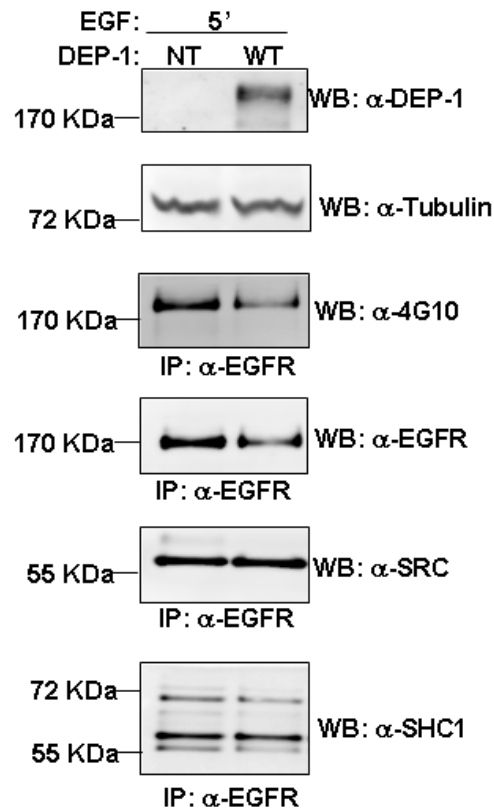


## SUPPLEMENTAL FIGURE 1



**Supp. Figure 1. DEP-1 over-expression does not affect SHC1 and SRC interaction with EGFR.** HeLa cells were transiently transfected with a plasmid expressing DEP-1 WT and treated with EGF for 5 min. After cell lysis, transfection efficiency was assessed with anti-DEP-1 (R&D System, AF1934) and anti tubulin antibodies. Whole protein extracts were immunoprecipitated with anti-EGFR antibody to recover EGFR proteins. The immunoprecipitation (IP) was revealed: with anti-4G10 to detect the tyrosine phosphorylation level of EGFR proteins; with anti-EGFR antibody to detect the amount of recovered EGFR; with anti-SRC and anti-SHC1 antibodies to determine whether DEP-1 over-expression affects the binding of SRC and SHC1 to the EGF receptor. Please, notice that the anti-DEP-1 antibody (R&D System, AF1934) does not recognize endogenous level of the DEP-1 phosphatase.