



A

Class I mRNAs

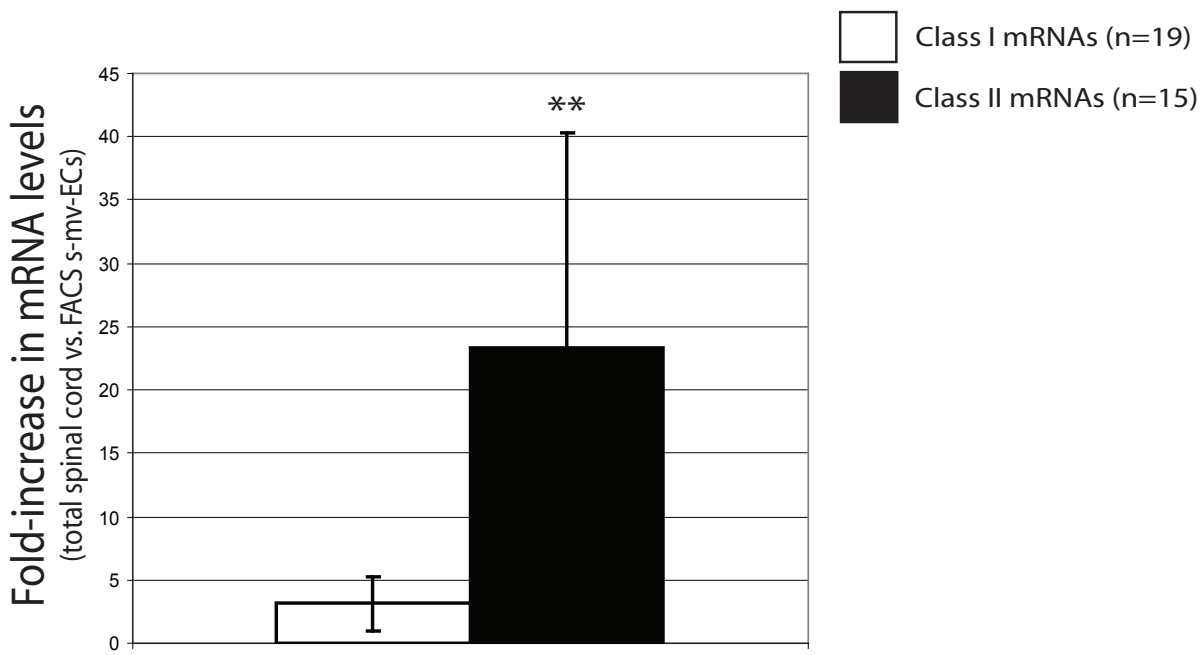
RefSeq	Description	Gene Name	Fold-enrichment	p value
NM_009598	Angiotensin I converting enzyme 1	CD143/Ace	1.83	0.0032
NM_009673	Annexin A5	Anx5	1.53	0.0063
NM_007527	Bcl2-associated X protein	BAX	1.95	0.0664
NM_009741	B-cell leukemia/lymphoma 2	Bcl-2	2.79	0.0101
NM_009743	Bcl2-like 1	Bcl(X)L/Bcl-XL	3.72	0.0001
NM_007465	Baculoviral IAP repeat-containing 2	clAP2/Api1	2.51	0.0432
NM_009810	Caspase 3	CPP32/Apopain	2.58	0.0111
NM_009811	Caspase 6	Mch2/mCASP-6	3.89	0.00001
NM_009805	CASP8 and FADD-like apoptosis regulator	Casper/c-Flip	3.29	0.0007
NM_009142	Chemokine (C-X3-C motif) ligand 1	Cxc3/Scyd1	1.35	0.2068
NM_010197	Fibroblast growth factor 1	Dffrx/Fam	-1.29	0.3899
NM_008402	Integrin alpha V	CD51/Itgav	2.49	0.0099
NM_010578	Integrin beta 1 (fibronectin receptor beta)	CD29/Fnrb	3.09	0.0003
NM_021099	Kit oncogene	CD117/c-KIT	3.80	0.0002
NM_008827	Placental growth factor	Plgf	5.82	0.0005
NM_008872	Plasminogen activator, tissue	tPA	2.24	0.0078
NM_008871	Serine peptidase inhibitor, clade E, member 1	PAI-1/Serpine1	8.80	0.002
NM_011577	Transforming growth factor, beta 1	TGF-beta1/Tgfb	6.67	0.0012
NM_009505	Vascular endothelial growth factor A	VEGF-A/VEGF120	1.97	0.0347

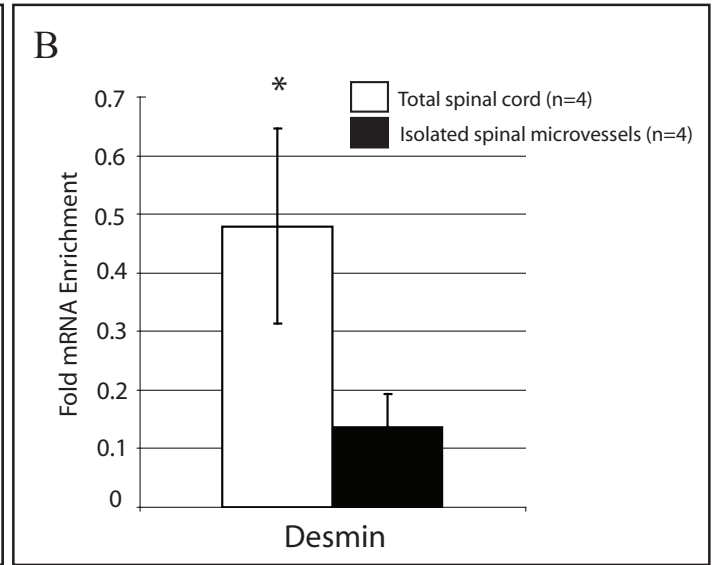
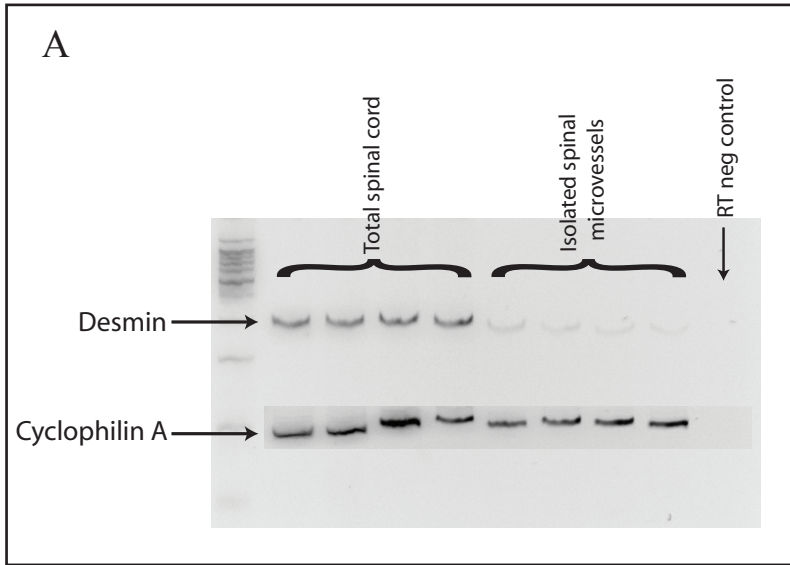
B

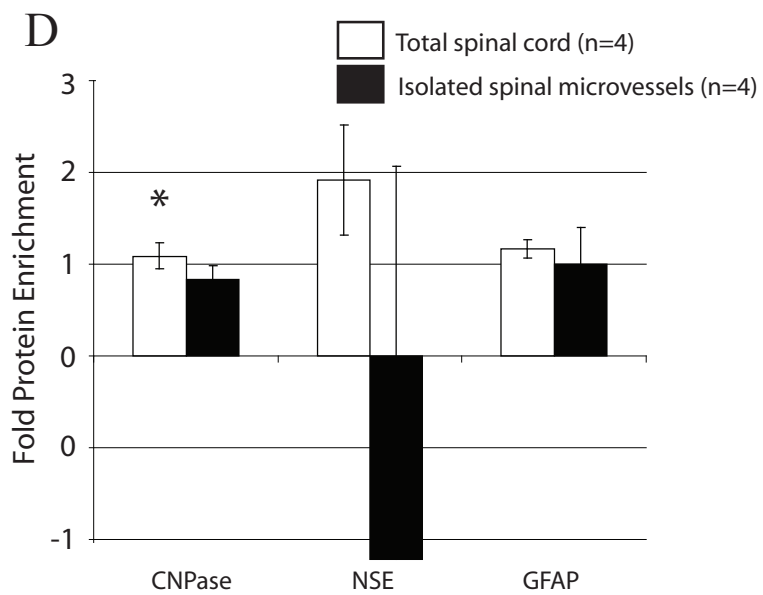
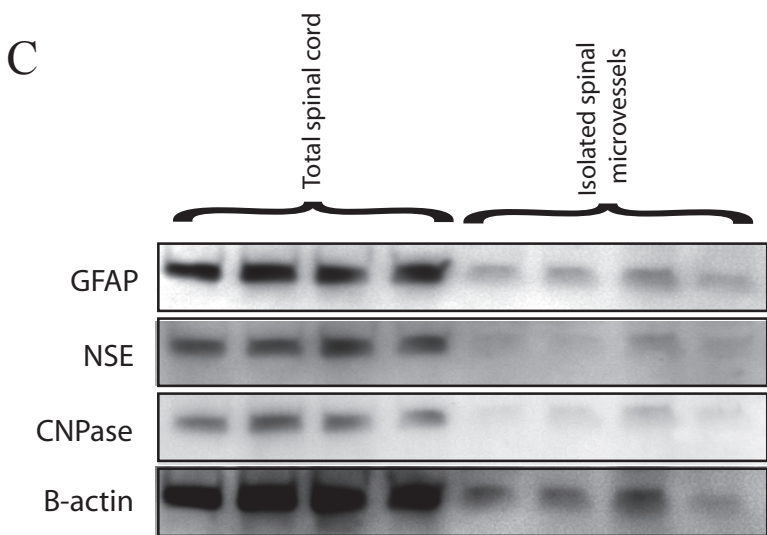
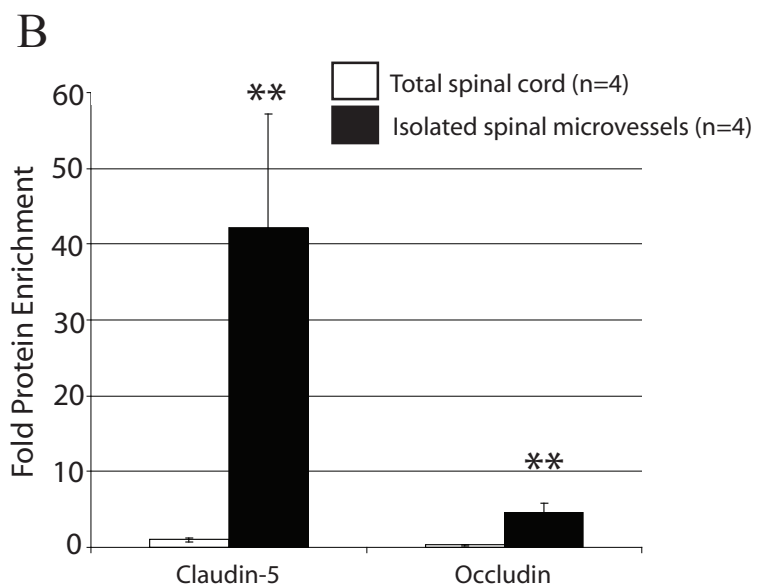
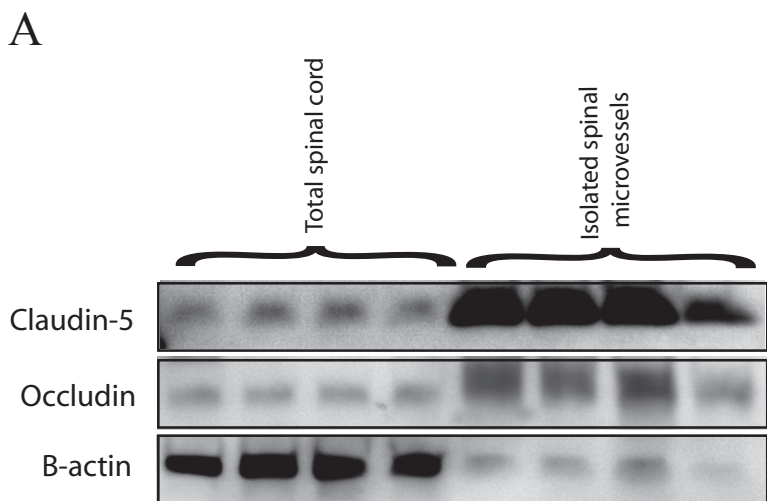
Class II mRNAs

RefSeq	Description	Gene Name	Fold-enrichment	p value
NM_009615	A disintegrin and metallopeptidase domain 17	CD156b/ADAM17	4.50	0.001
NM_009640	Angiopoietin 1	Ang-1	12.08	0.00001
NM_009868	Cadherin 5	CD144/VE-Cadherin	29.84	0.00001
NM_009929	Procollagen, type XVIII, alpha 1	endostatin	2.58	0.0007
NM_007987	Fas (TNF receptor superfamily member)	CD95/APO-1	12.89	0.001
NM_010228	FMS-like tyrosine kinase 1	VEGFR-1/Fit-1	40.50	0.00001
NM_010233	Fibronectin 1	Fn-1	38.89	0.00001
NM_010493	Intercellular adhesion molecule	CD54/Icam-1	15.68	0.0007
NM_010612	Kinase insert domain protein receptor	VEGFR-2/Flk-1	27.58	0.0004
NM_008713	Nitric oxide synthase 3, endothelial cell	eNOS/Nos-3	15.40	0.0001
NM_008756	Occludin	Ocln	38.34	0.00001
NM_008816	Platelet/endothelial cell adhesion molecule 1	Cd31/PECAM-1	14.91	0.00001
NM_011345	Selectin, endothelial cell	CD62E/E-selectin	65.07	0.001
NM_013690	Endothelial-specific receptor tyrosine kinase	Cd202b/Tie2	24.96	0.0001
NM_011708	Von Willebrand factor homolog	Vwf	7.32	0.001

C







Control FACS Purified s-mv-ECs vs. 24 hour SCI FACS Purified s-mv-ECs
Complete Microarray Data Set

UniGene	RefSeq	Symbol	Description	Gene Name	Average ΔC_t		$2^{-\Delta C_t}$		Fold Difference 24 hr SCI/control s-mv-ECs	T-test p value	Fold Dysregulation 24 hr SCI/control s-mv-ECs
					control s-mv-ECs	24hr SCI s-mv-ECs	control s-mv-ECs	24hr SCI s-mv-ECs			
Mm.754	NM_009598	Ace	Angiotensin I converting enzyme (peptidyl-dipeptidase A) 1	AW208573/CD143	4.78	8.64	3.6E-02	2.5E-03	14.52	0.0009	14.52
Mm.301626	NM_007428	Agt	Angiotensinogen (serpin peptidase inhibitor, clade A, member 8)	AI265500/Aogen	3.90	1.98	6.7E-02	2.5E-01	0.26	0.0110	-3.79
Mm.309336	NM_009640	Angpt1	Angiopoietin 1	1110046021Rik/Ang-1	0.84	3.93	5.6E-01	6.5E-02	8.54	0.0062	8.54
Mm.1620	NM_009673	Anxa5	Annexin A5	Anx5/R74653	2.41	2.60	1.9E-01	1.7E-01	1.14	0.5801	1.14
Mm.19904	NM_007527	Bax	Bcl2-associated X protein	BAX	3.31	3.54	1.0E-01	8.6E-02	1.17	0.7464	1.17
Mm.238213	NM_009743	Bcl2l1	Bcl2-like 1	Bcl(X)L/Bcl-XL	2.04	1.73	2.4E-01	3.0E-01	0.81	0.3376	-1.24
Mm.335659	NM_007465	Birc2	Baculoviral IAP repeat-containing 2	AW146227/Api1	4.78	5.47	3.6E-02	2.3E-02	1.61	0.3963	1.61
Mm.6246	NM_007551	Blr1	Burkitt lymphoma receptor 1	CXC-R5/CXCR-5	3.92	7.84	6.6E-02	4.4E-03	15.19	0.0005	15.19
Mm.34405	NM_009810	Casp3	Caspase 3	A830040C14Rik/Apopain	2.80	5.86	1.4E-01	1.7E-02	8.36	0.0142	8.36
Mm.281379	NM_009811	Casp6	Caspase 6	Mch2/mCASP-6	4.32	5.48	5.0E-02	2.2E-02	2.25	0.0445	2.25
Mm.284248	NM_013653	Ccl5	Chemokine (C-C motif) ligand 5	MuRantes/RANTES	4.26	8.72	5.2E-02	2.4E-03	22.05	0.0041	22.05
Mm.21767	NM_009868	Cdh5	Cadherin 5	7B4/AA408225	3.00	5.47	1.3E-01	2.3E-02	5.55	0.0283	5.55
Mm.11778	NM_009805	Cflar	CASP8 and FADD-like apoptosis regulator	2310024N18Rik/A430105C05RIK	4.06	5.57	6.0E-02	2.1E-02	2.84	0.0247	2.84
Mm.218009	NM_009950	Cradd	CASP2 and RIPK1 domain containing adaptor with death domain	RAIDD	4.78	7.57	3.6E-02	5.3E-03	6.90	0.0051	6.90
Mm.4922	NM_009969	Csf2	Colony stimulating factor 2 (granulocyte-macrophage)	Csfgm/Gm-CSf	4.61	7.17	4.1E-02	7.0E-03	5.91	0.0123	5.91
Mm.103711	NM_009142	Cx3cl1	Chemokine (C-X3-C motif) ligand 1	AB030188/ABCD-3	4.78	5.18	3.6E-02	2.8E-02	1.32	0.5430	1.32
Mm.284855	NM_007902	Edn2	Endothelin 2	VIC	4.78	8.72	3.6E-02	2.4E-03	15.36	0.0011	15.36
Mm.283168	NM_010332	Ednra	Endothelin receptor type A	ET-AR/ETa	4.78	6.71	3.6E-02	9.5E-03	3.83	0.0378	3.83
Mm.1626	NM_007987	Fas	Fas (TNF receptor superfamily member)	AI196731/APO-1	4.35	4.94	4.9E-02	3.3E-02	1.51	0.5068	1.51
Mm.3355	NM_010177	Fasl	Fas ligand (TNF superfamily, member 6)	APT1LG1/CD178	4.27	7.19	5.2E-02	6.8E-03	7.56	0.0661	7.56
Mm.241282	NM_010197	Fgf1	Fibroblast growth factor 1	Dffrx/Fam	3.90	4.81	6.7E-02	3.6E-02	1.88	0.1802	1.88
Mm.389712	NM_010228	Fit1	FMS-like tyrosine kinase 1	AI323757/Fit-1	4.15	1.19	5.6E-02	4.4E-01	0.13	0.0007	-7.78
Mm.193099	NM_010233	Fn1	Fibronectin 1	E330027I09/Fn	0.98	1.71	5.1E-01	3.1E-01	1.66	0.1003	1.66
Mm.435508	NM_010493	Icam1	Intercellular adhesion molecule	CD54/Icam-1	4.25	4.83	5.2E-02	3.5E-02	1.49	0.6525	1.49
Mm.1245	NM_010510	Ifnb1	Interferon beta 1, fibroblast	IFNB/Ifb	4.67	7.59	3.9E-02	5.2E-03	7.59	0.0549	7.59
Mm.35814	NM_008350	Il11	Interleukin 11	IL-11	4.32	7.96	5.0E-02	4.0E-03	12.49	0.0064	12.49
Mm.983	NM_010556	Il3	Interleukin 3	BPA/Csfmu	4.78	8.05	3.6E-02	3.8E-03	9.65	0.0142	9.65
Mm.1019	NM_031168	Il6	Interleukin 6	Il-6	4.78	8.72	3.6E-02	2.4E-03	15.36	0.0011	15.36
Mm.16234	NM_010577	Itga5	Integrin alpha 5 (fibronectin receptor alpha)	Cd49e/Fnra	4.43	7.39	4.6E-02	6.0E-03	7.74	0.0015	7.74
Mm.227	NM_008402	Itgav	Integrin alpha V	1110004F14Rik/2610028E01RIK	4.43	4.53	4.6E-02	4.3E-02	1.07	0.8941	1.07
Mm.263396	NM_010578	Itgb1	Integrin beta 1 (fibronectin receptor beta)	4633401G24Rik/AA409975	2.06	2.68	2.4E-01	1.6E-01	1.54	0.0758	1.54
Mm.285	NM_010612	Kdr	Kinase insert domain protein receptor	6130401C07/Flk-1	3.80	2.81	7.2E-02	1.4E-01	0.50	0.3507	-1.99
Mm.247073	NM_021099	Kit	Kit oncogene	Bs/CD117	1.91	4.99	2.7E-01	3.1E-02	8.47	0.0025	8.47
Mm.29564	NM_008610	Mmp2	Matrix metalloproteinase 2	Clg4a/GelA	4.33	7.28	5.0E-02	6.5E-03	7.72	0.0409	7.72
Mm.4406	NM_013599	Mmp9	Matrix metalloproteinase 9	AW743869/B	4.67	8.61	3.9E-02	2.6E-03	15.32	0.0012	15.32
Mm.2740	NM_008726	Nppb	Natriuretic peptide precursor type B	AA408272/BNP	4.40	8.39	4.7E-02	3.0E-03	15.83	0.0003	15.83
Mm.4807	NM_008756	Ocln	Occludin	Ocl	4.78	3.01	3.6E-02	1.2E-01	0.29	0.0331	-3.40
Mm.221403	NM_011058	Pdgfra	Platelet derived growth factor receptor, alpha polypeptide	AI115593/CD140a	4.78	6.85	3.6E-02	8.6E-03	4.22	0.0467	4.22
Mm.343951	NM_008816	Pecam1	Platelet/endothelial cell adhesion molecule 1	Cd31/PECAM-1	4.48	3.42	4.5E-02	9.4E-02	0.48	0.1114	-2.09
Mm.4809	NM_008827	Pgf	Placental growth factor	AI854365/Plgf	3.08	6.36	1.2E-01	1.2E-02	9.74	0.0196	9.74
Mm.154660	NM_008872	Plat	Plasminogen activator, tissue	AU020998/AW212668	4.49	4.32	4.4E-02	5.0E-02	0.88	0.8076	-1.13
Mm.4183	NM_008873	Plau	Plasminogen activator, urokinase	u-PA/uPA	3.76	8.12	7.4E-02	3.6E-03	20.52	0.0028	20.52
Mm.2339	NM_008968	Ptgis	Prostaglandin I2 (prostacyclin) synthase	Cyp8/Cyp8a1	4.40	7.62	4.7E-02	5.1E-03	9.35	0.0007	9.35
Mm.687	NM_007483	Rhob	Ras homolog gene family, member B	AA017882/Arh6	3.28	7.36	1.0E-01	6.1E-03	16.88	0.0163	16.88
Mm.374799	NM_009068	Ripk1	Receptor (TNFRSF)-interacting serine-threonine kinase 1	D330015H01Rik/RIP	4.36	6.94	4.9E-02	8.1E-03	6.00	0.0081	6.00
Mm.5245	NM_011345	Sele	Selectin, endothelial cell	CD62E/E-selectin	2.72	5.84	1.5E-01	1.8E-02	8.65	0.0447	8.65
Mm.1461	NM_011346	Sell	Selectin, lymphocyte	AI528707/CD62L	3.74	7.51	7.5E-02	5.5E-03	13.60	0.0022	13.60
Mm.332590	NM_009151	Selp1g	Selectin, platelet (p-selectin) ligand	CD162/Ps1g-1	4.78	7.97	3.6E-02	4.0E-03	9.16	0.0022	9.16
Mm.250422	NM_008871	Serpine1	Serine (or cysteine) peptidase inhibitor, clade E, member 1	PAI-1/PAI1	3.22	6.52	1.1E-01	1.1E-02	9.86	0.0031	9.86
Mm.248380	NM_011577	Tgfb1	Transforming growth factor, beta 1	TGF-beta1/Tgfb	2.91	5.06	1.3E-01	3.0E-02	4.45	0.0562	4.45
Mm.24096	NM_009378	Thbd	Thrombomodulin	AI385582/CD141	4.42	6.73	4.7E-02	9.4E-03	4.94	0.0262	4.94
Mm.4159	NM_011580	Thbs1	Thrombospondin 1	TSP-1/TSP1	2.31	8.17	2.0E-01	3.5E-03	58.12	0.0003	58.12
Mm.1062	NM_009425	Tnfsf10	Tumor necrosis factor (ligand) superfamily, member 10	A330042I21Rik/AI448571	4.78	5.29	3.6E-02	2.6E-02	1.43	0.5182	1.43
Mm.282184	NM_009505	Vegfa	Vascular endothelial growth factor A	VEGF-A/VEGF120	3.62	3.67	8.1E-02	7.8E-02	1.03	0.9456	1.03
Mm.22339	NM_011708	Vwf	Von Willebrand factor homolog	6820430P06Rik/AI551257	4.19	5.82	5.5E-02	1.8E-02	3.11	0.0791	3.11
Mm.299381	NM_013556	Hprt1	Hypoxanthine guanine phosphoribosyl transferase 1	C81579/HPGRT	2.19	1.61	2.2E-01	3.3E-01	0.67	0.2105	-1.49
Mm.2180	NM_008302	Hsp90ab1	Heat shock protein 90kDa alpha (cytosolic), class B member 1	90kDa/AL022974	-0.66	0.00	1.6E+00	1.0E+00	1.58	0.0703	1.58
Mm.343110	NM_008084	Gapdh	Glyceraldehyde-3-phosphate dehydrogenase	Gapd	-0.85	-0.89	1.8E+00	1.8E+00	0.97	0.8726	-1.03
Mm.328431	NM_007393	Actb	Actin, beta, cytoplasmic	Actx/E430023M04Rik	-1.34	-0.73	2.5E+00	1.7E+00	1.53	0.0771	1.53