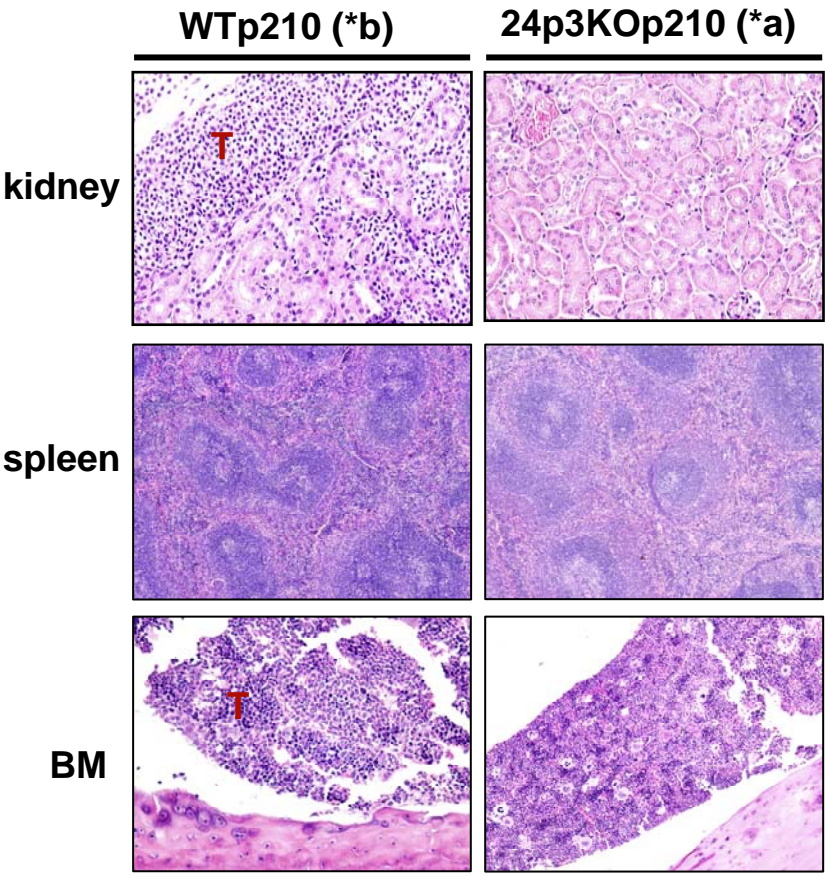
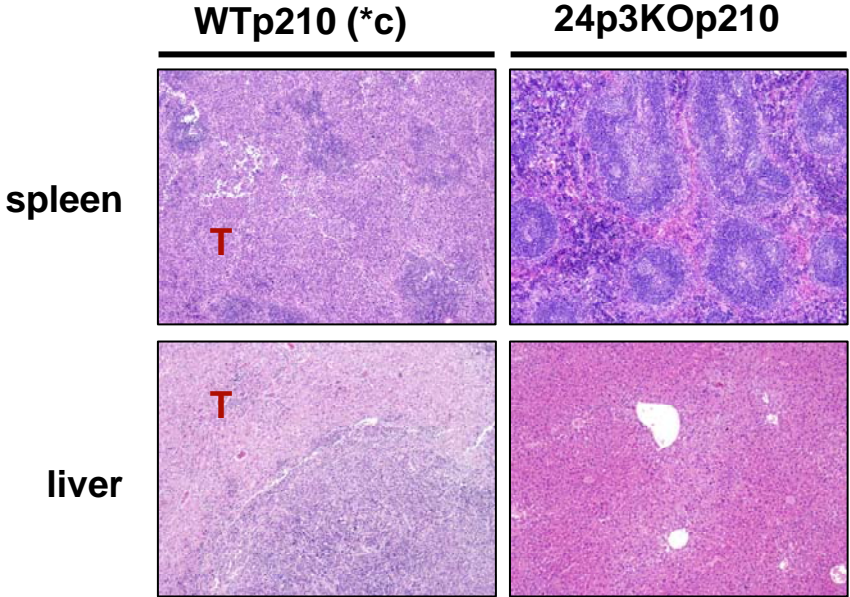


Supplementary Figure 4

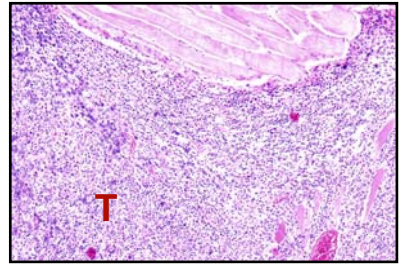
A.



B.



C.



Supplementary Figure 4

D.

	WTp210 (*b)	24p3KOp210 (*a)
White blood cell	6000/ul	3450/ul
Red blood cell	4.93X10 ⁶	8.75X10 ⁶
Hemoglobin	7.40g/L	14.3g/L
Hematocrit	22.4%	40.2%
White blood cell differential count		
Segs	67.8%	24%
Lymphs	15.6%	66%
monos	15.1%	9%

E.

