

The importance of negative superhelicity in inducing the formation of G-quadruplex and i-motif structures in the c-Myc promoter: implications for drug targeting and control of gene expression

Daekyu Sun^{1-3*} and Laurence H. Hurley^{1-3*}

¹College of Pharmacy, University of Arizona, Tucson, Arizona 85721

²BIO5 Institute, 1657 E. Helen Street, Tucson, Arizona 85721

³Arizona Cancer Center, 1515 N. Campbell Avenue, Tucson, Arizona 85724

Contents: Figure showing Br₂ footprinting of linear DNA

Supporting Information

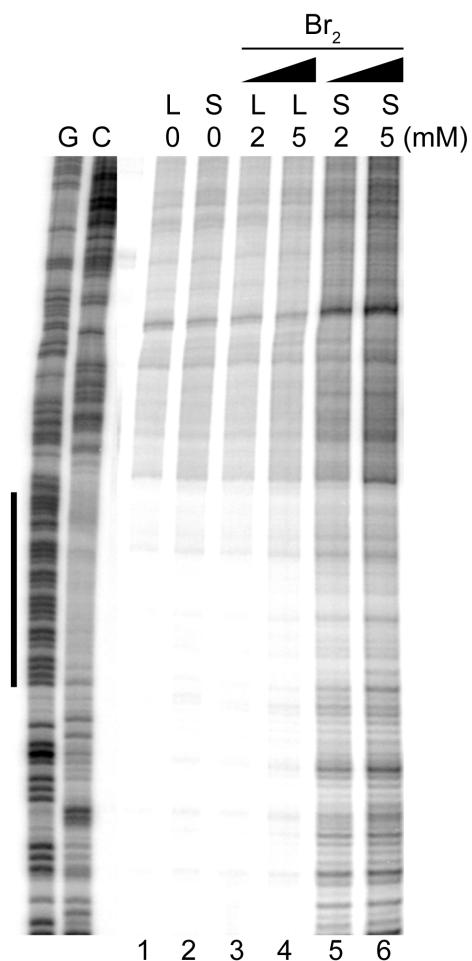


Figure S1. Br₂ footprinting of linear DNA. The plasmid was linearized by digestion with EcoRI. Linear (L) (lanes 3 and 4) or supercoiled (S) (lanes 5 and 6) DNA was incubated with Br₂ at either 2 or 5 mM (lanes 3 and 5 and lanes 4 and 6, respectively). Lanes 1 and 2 were not exposed to Br₂. G and C represent the sequence lanes and the bar to the left of the gel covers the NHE III₁.