

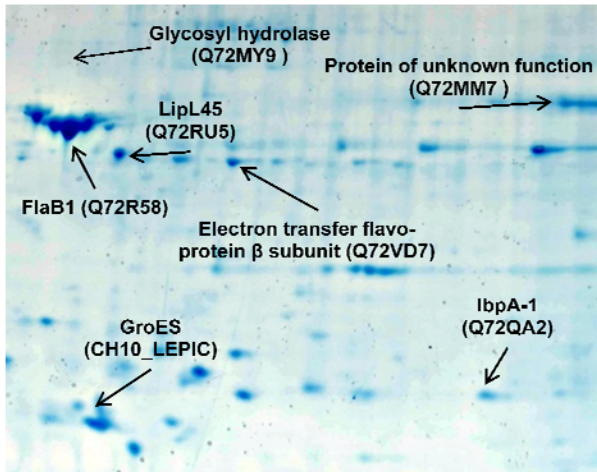
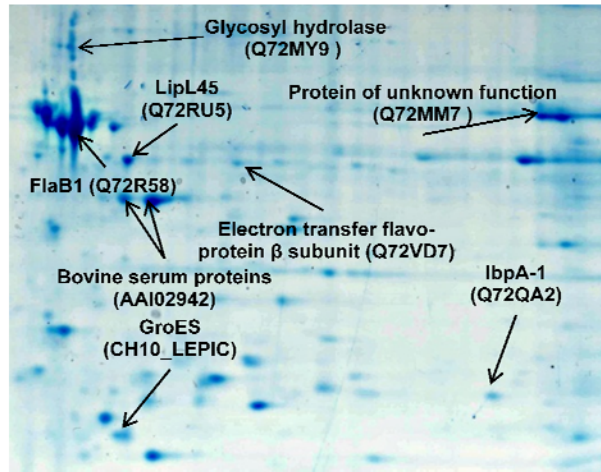
A**B**

Figure S3 Protein regulation in *Leptospira* in response to culture shift to 37°C and to media containing -Fe/FBS media as determined by 2DGE. *Leptospira* shifted to unmodified EMJH media at 37°C (A) or to -Fe/FBS media at 37°C (B). Protein expression changes were determined qualitatively using LipL45¹⁴ as a reference point for proteins not altered in expression.