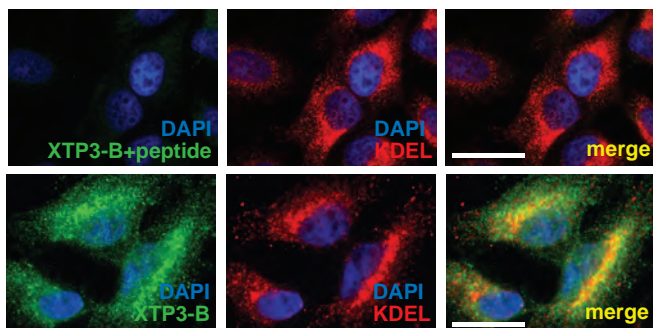


a



b

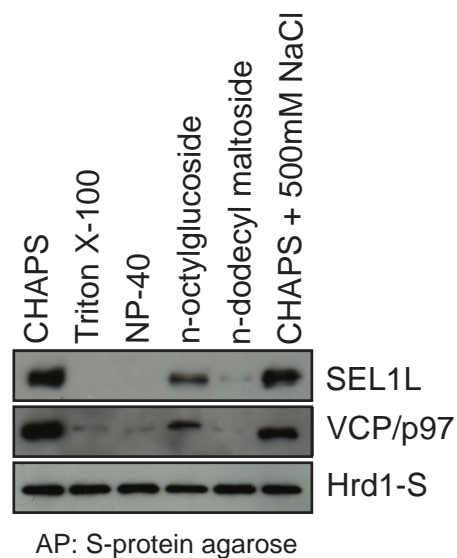


Figure S1.

(a) Specificity of XTP3-B antibody. Colocalization of endogenous XTP3-B (green) with the ER-resident proteins (anti-KDEL, red) and nuclei (DAPI, blue) by immunofluorescence in HeLa cells, shown with (top) and without (bottom) inclusion of the peptide antigen during staining. Scale bar = 5 μ M.

(b) Detergent sensitivity of Hrd1 complexes. HEK293 cells expressing S-tagged Hrd1 were solubilized in 1% CHAPS, Triton X-100, NP-40, n-octylglucosidase, n-dodecyl maltoside or 1% CHAPS + 500mM NaCl, and affinity purified by S-protein agarose. Immunoblots were probed with antibodies against SEL1L, VCP/p97 and S-tag.