

Supplementary Figure legends

Supplementary Figure 1. Frequencies of ovalbumin-specific FoxP3⁺ T cells in high or low vitamin A/retinoic acid status after immunization with ovalbumin. The data are shown in a dot plot (A) or graph (B) format. Splenocytes of DO11.10 Rag2 (-/-) mice were injected into Low-A and Hi-A BALB/c mice. The mice were immunized with ovalbumin and sacrificed at day 7. A group of Low-A mice was injected with retinoic acid at multiple times following the immunization. The cells examined were KJ1.26⁺CD4⁺ cells present in spleen, peripheral lymph nodes (PLN), mesenteric lymph nodes (MLN), Peyer's patches (PP), small intestine (S-intestine), colon, peritoneal cavity (P. cavity), lung and blood. Combined data of three independent experiments (total n=3) are shown in panel B. *Significant differences from the Low-A group.

Supplementary Figure 2. The impact of Low-A and Hi-A statuses on the frequency of FoxP3⁺ T cells and CD103⁺ FoxP3⁺ T cells in SAMP1/YP mice. (A) Frequencies of FoxP3⁺ T cells as % of CD4⁺ cells and (B) frequencies of CD103⁺ FoxP3⁺ T cells as % of CD4⁺ cells in Hi-A, Mid-A and Low-A SAMP1/YP mice are shown. SAMP1/YP mice were fed with Low-A, Mid-A or Hi-A diets for 20 weeks for this study. Averages of five mice with SEM are shown. *Significant differences from Mid-A (p<0.05).

Supplementary Figure 3. Surface phenotype of the FoxP3⁺ T cells induced in three different vitamin A statuses. (A) Expression levels of Treg-associated surface antigens by CD4⁺ FoxP3⁺ T cells are shown as dot plots. (B) Expression of CD25 by the FoxP3⁺ T cells of

the MLN of Low-A, Mid-A or Hi-A mice. A set of representative data out of four independent experiments are shown.

Supplementary Figure 4. The frequencies of IL-17⁺, IFN- γ ⁺, and IL-4⁺ CD4⁺ T cells in Low-A, Mid-A or Hi-A SAMP1/YP mice. A set of representative data out of four independent experiments are shown. The cells are gated on CD4⁺CD44⁺ memory/effector T cells. SAMP1/YP mice were fed with Low-A, Mid-A or Hi-A diets for 20 weeks for this study.

Supplementary Figure 5. In vitro suppressive activity of CD103⁻ Low-A FoxP3⁺ T cells.

[3H]-thymidine incorporation by CD4⁺CD25⁻ target T cells cultured in the presence of indicated numbers of Tregs was measured. Representative data of three independent experiments are shown.

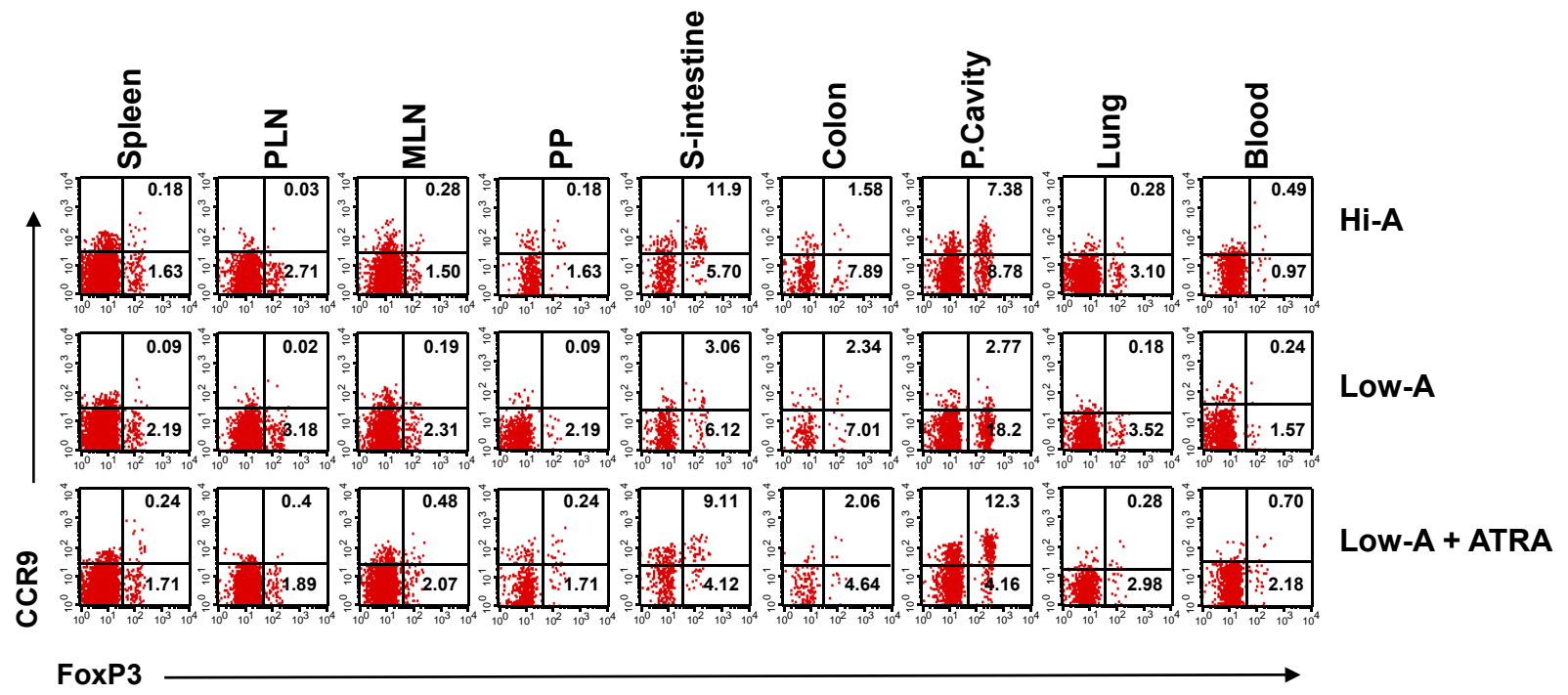
Supplementary Figure 6. Effects of RAR α blockade or activation with ATRA on induction of CD103⁺ FoxP3⁺ T cells. (A) Induction of CD103⁺ FoxP3⁺ T cells by irradiated APC and anti-CD3 in the presence of ATRA or Ro41-5253. Naïve CD4⁺CD25⁻ T cells were co-cultured with irradiated APC or CD11c⁺ DCs for 5-6 days. (B) TGF- β 1 (0.2 ng/ml) was added as indicated. (D) Dot plots for cells cultured with thymic APC, spleen DC or MLN DCs. Combined (A) or representative (B and C) data out of 3 independent experiments are shown. Significant difference from the control group (*) or the ATRA group (**).

Supplementary Figure 7. Additional features of Low-A and Hi-A APC or mice. (A)

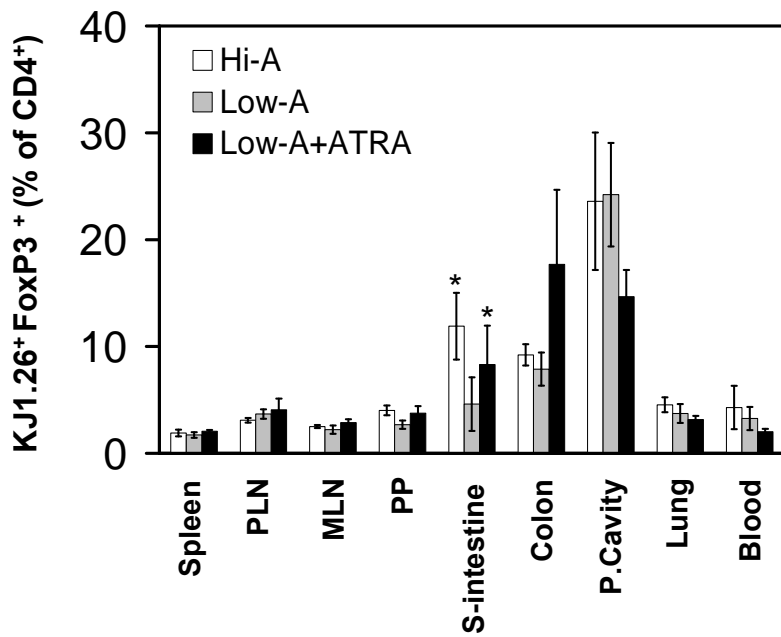
Induction of CD103⁺FoxP3⁺ T cells by Low-A APC versus Mid-A APC. The culture condition

was similar to that described for Figure 8B. Low-A APC was 20-30% more efficient than Mid-A APC in induction of CD103⁺FoxP3⁺ T cells but there was no statistically significant increase in absolute numbers of total FoxP3⁺ T cells. *Significant differences from the Mid-A group. (B) Surface phenotype of DCs in Mid-A, Low-A and Hi-A mice. Expression of CD40, CD70, CD80, CD86 and CD103 was examined. CD70 expression by the splenic CD11C⁺CD11b⁺ DCs in Low-A mice was higher than the cells in Hi-A or Mid-A mice. (C) Expression of RALDH1 and RALDH3 was increased in the small intestinal lamina propria (SI-LP) cells of Low-A mice. RALDH2 was decreased in MLN DCs of Low-A mice. Real time PCR analysis was performed with the expression normalized with that of β -actin. All experiments were performed at least 3 times, and combined (A) or representative (B and C) data are shown.

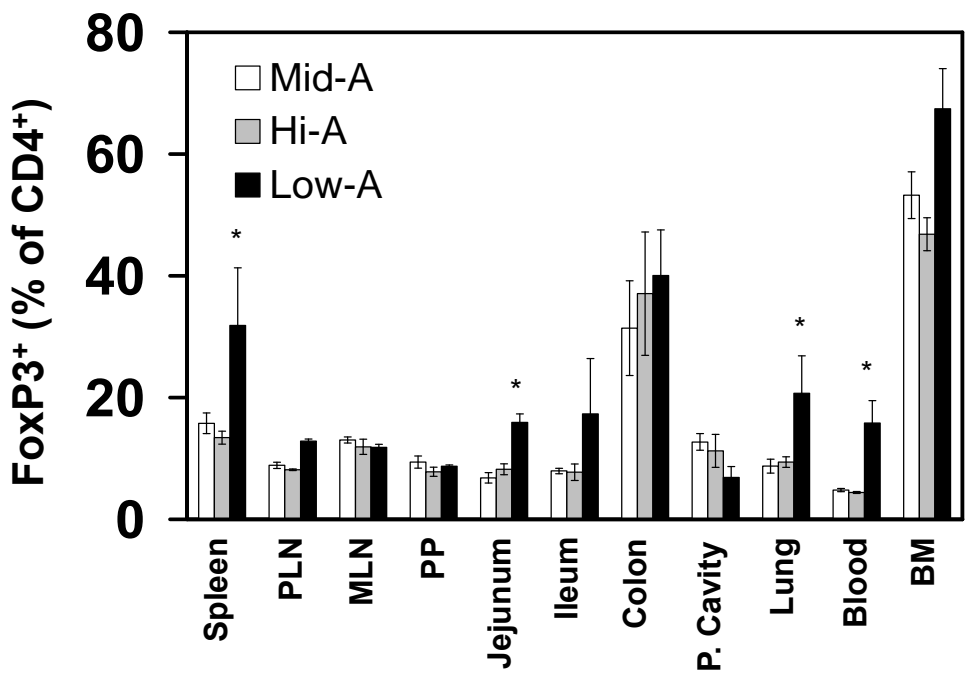
A



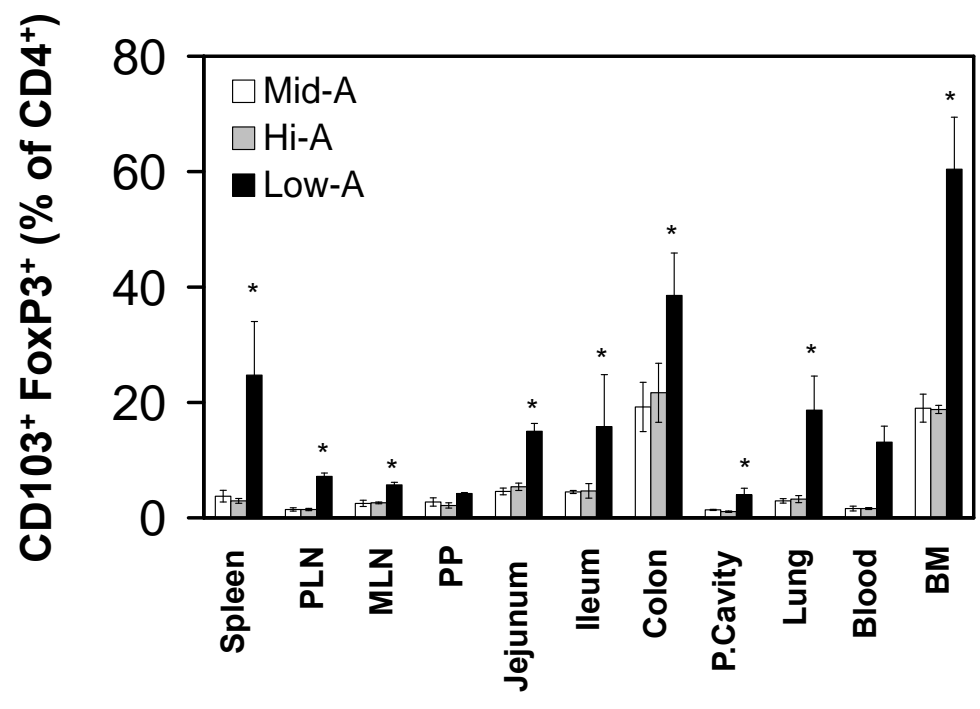
B



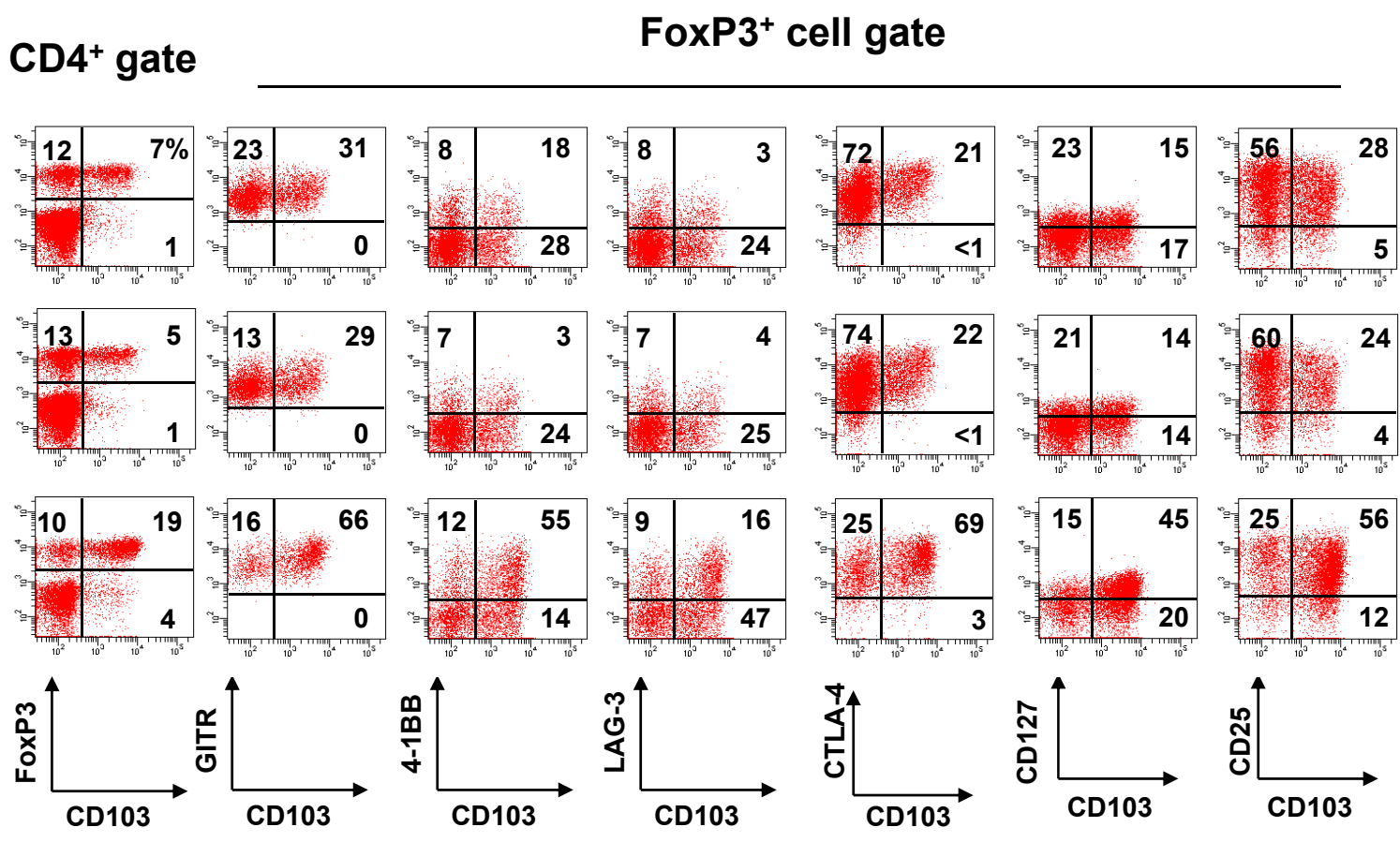
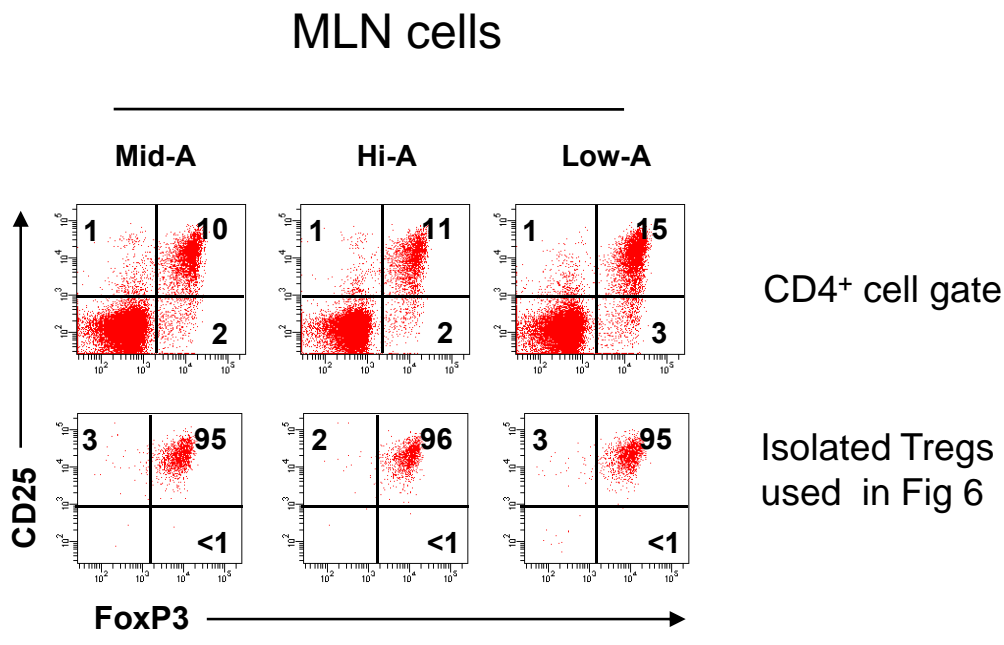
A



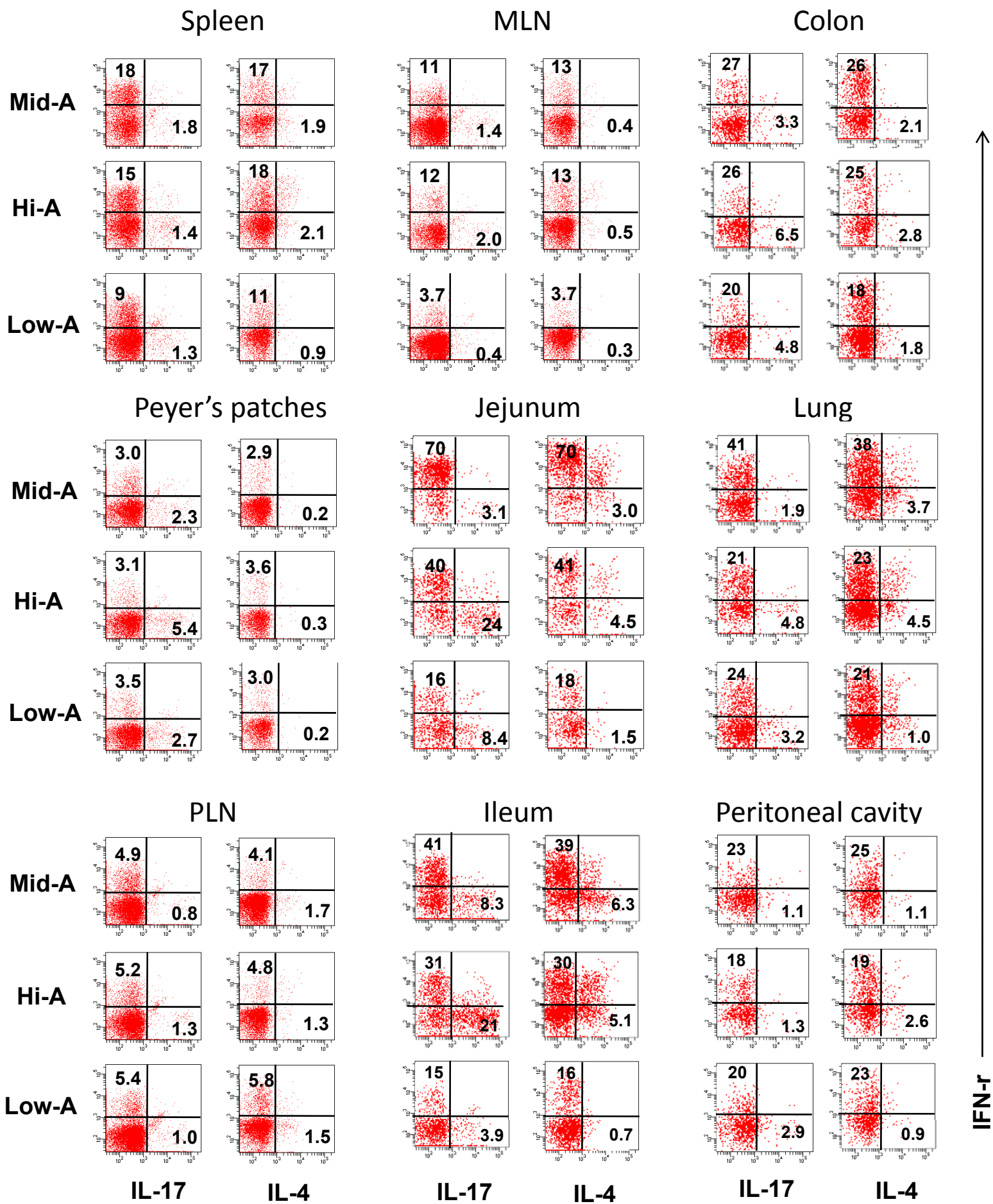
B



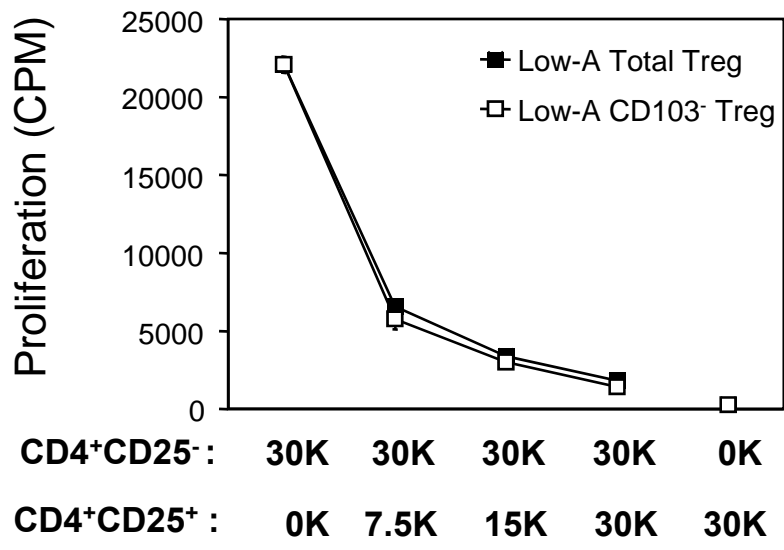
Supp-Fig. 2

A**B**

Supp-Fig. 3

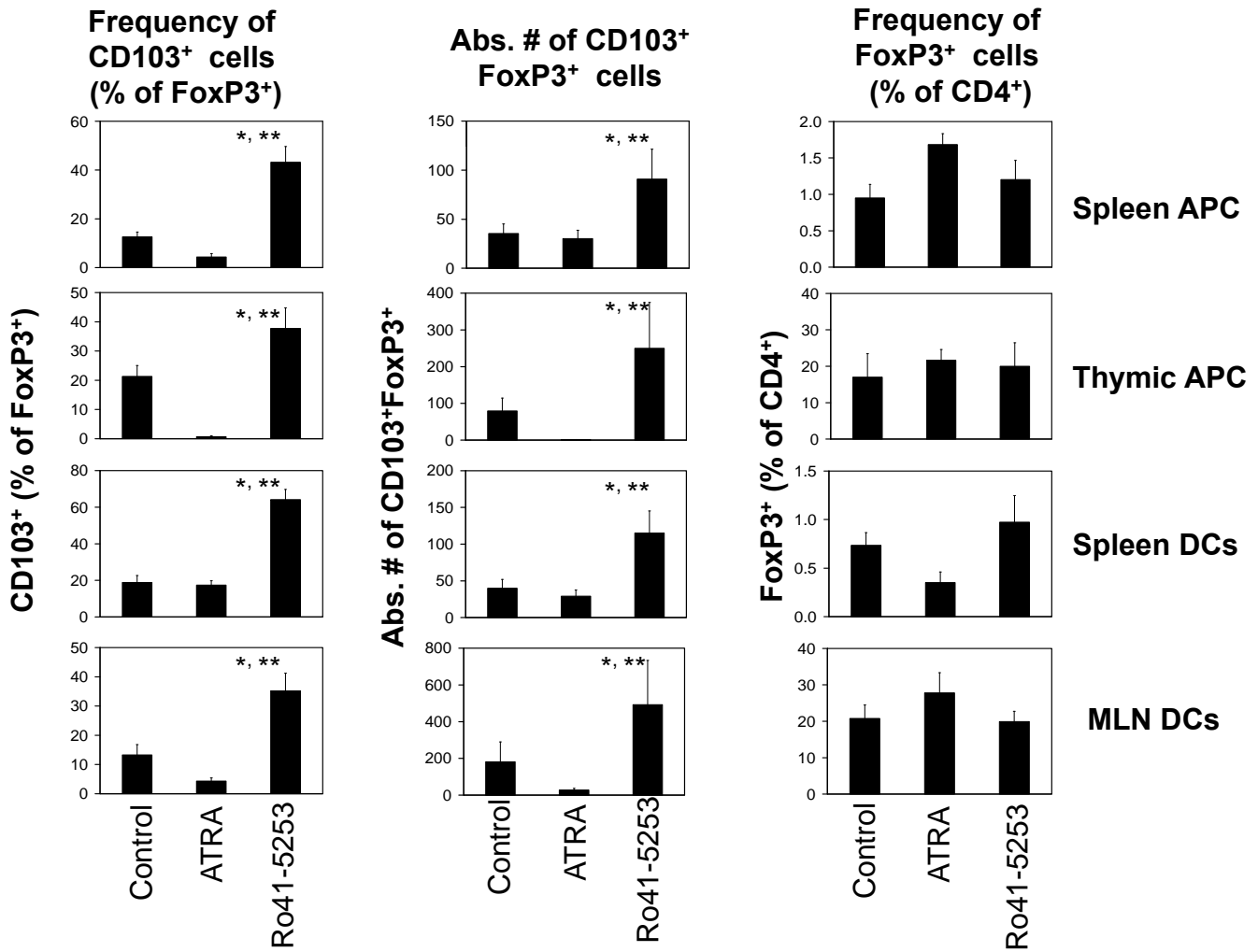


Supp-Fig. 4

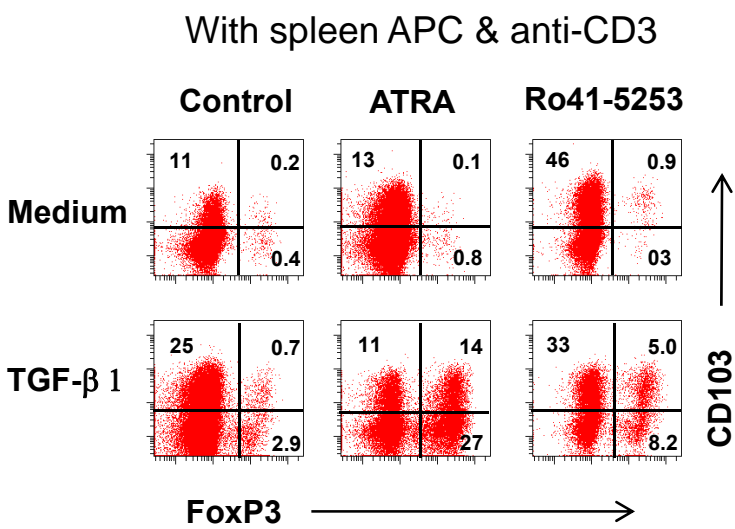


Supp-Fig. 5

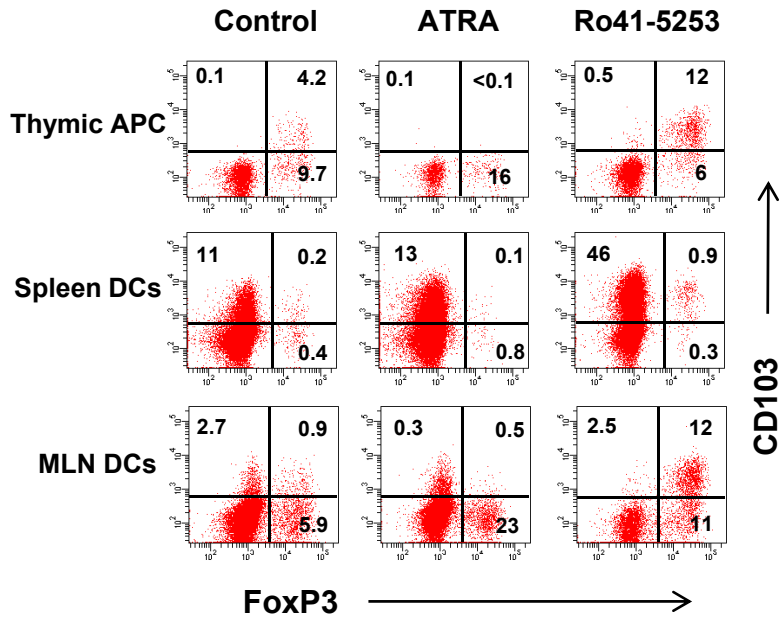
A

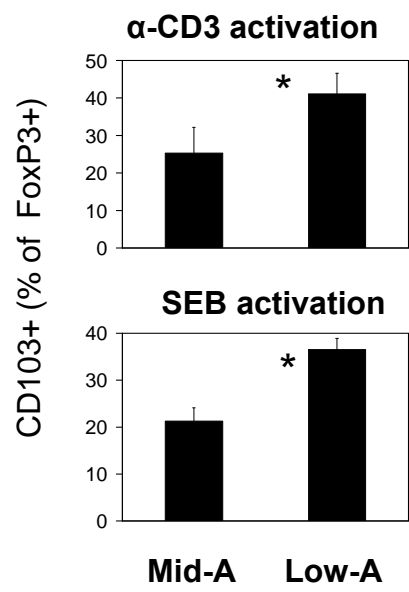
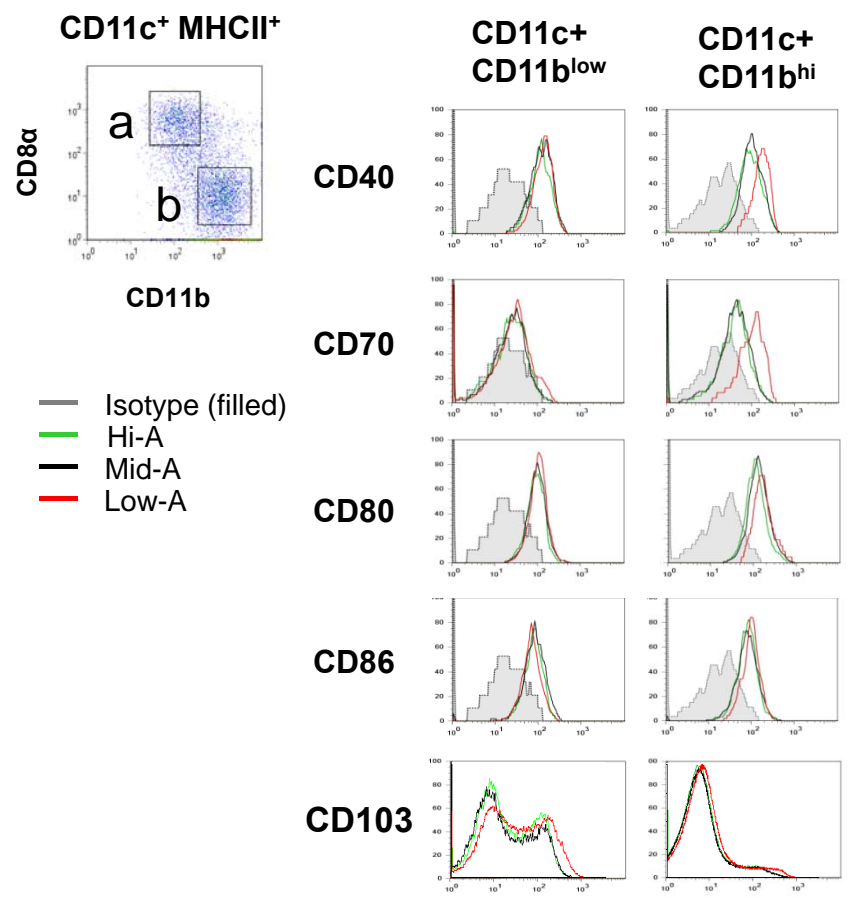


B



C



A**B****C**