

Supplemental Material

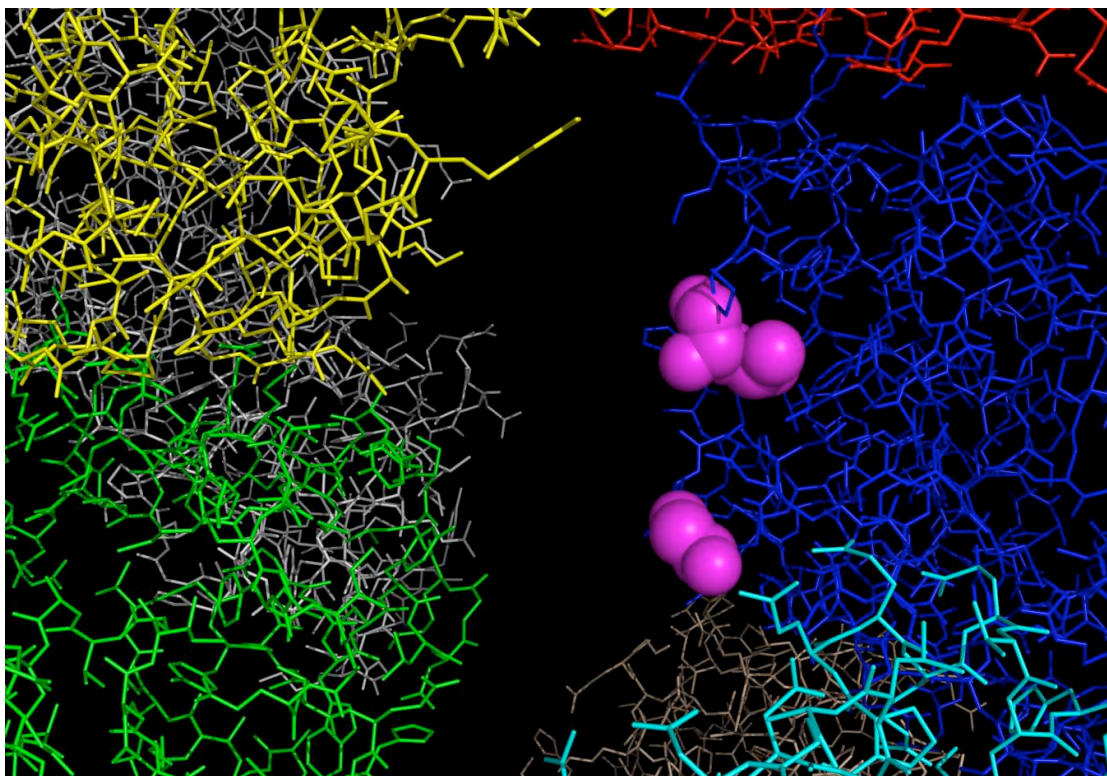


Figure S1. Packing of DMATase within crystal. The DMATase molecules packed in crystal are depicted with different colors and the one for packing analysis is in blue. The two structured residues (G113 and L199) that lead to the missing domain (residues 114-188) are depicted in spheres and colored magenta to highlight the possible physical location of the missing domain in the crystal.

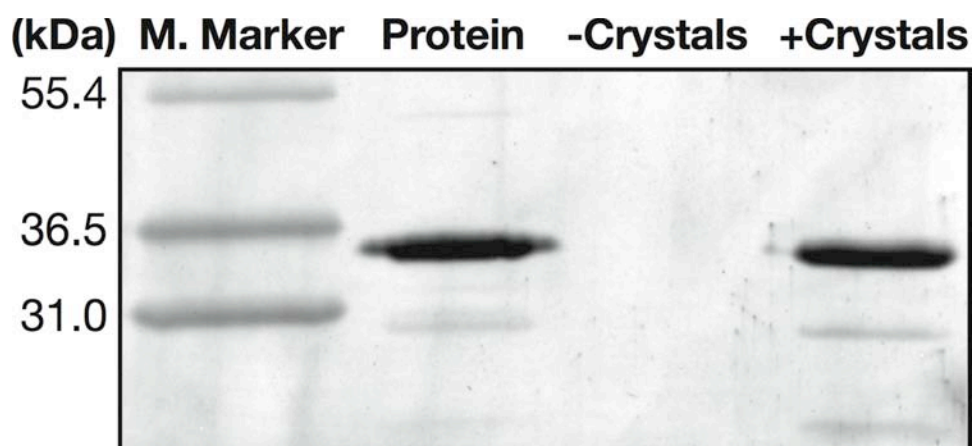


Figure S2. SDS gel analysis (silver staining) comparing the DMATase from the dissolved crystals to the purified protein. The calculated molecular weight of *P. aeruginosa* DMATase is 35.8 kDa.