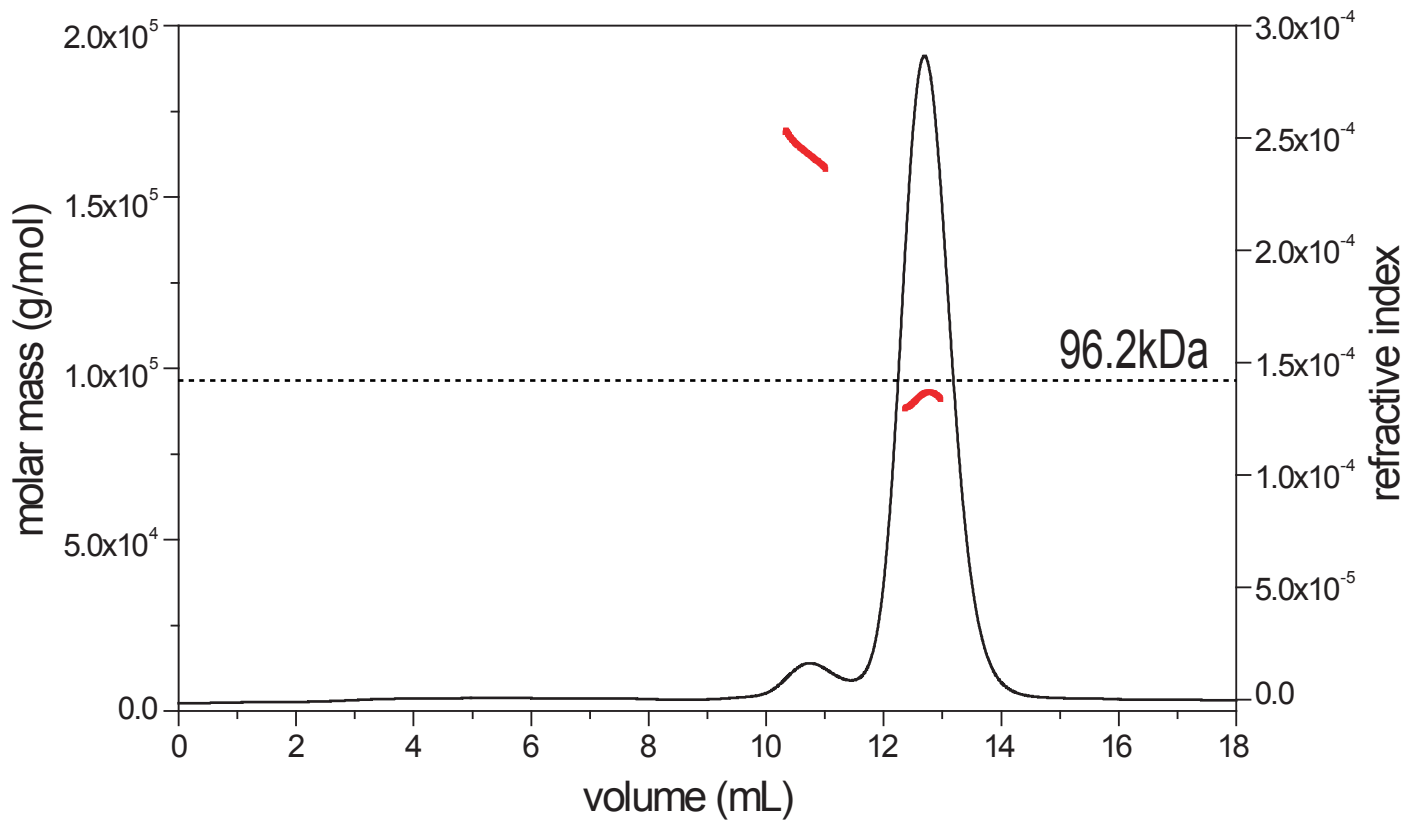


Supplementary Figure 1 SEC-MALS measurements of GIRK_{CP}

Average molecular mass (red) and the refractive index (black) are shown. The theoretical mass of a tetramer of GIRK_{CP} is indicated by a dashed horizontal line.

Supplementary Figure 1



Experimental Procedures for SEC-MALS

The oligomeric state of GIRK_{CP} in solution was determined via SEC-MALS measurements performed on an ÄKTA purifier system (GE Healthcare) connected to a multiple angle light-scattering detector, DAWN HELEOS (Wyatt Technology), and a refractive index detector, RID-10A (Shimadzu). A Superdex 200 HR 10/300 GL column (GE Healthcare) was used in 20 mM HEPES·NaOH (pH8.0), 150 mM KCl, 1 mM dithiothreitol at a flow rate of 0.5 ml/min. Sample volumes of 50 µl were injected at a concentration of 1.2 mM. A specific refractive index increment (dn/dc) of 0.185 ml/g was used. The data were recorded and processed using ASTRA software (Wyatt Technology), yielding the molecular mass of 92.4 K.