

## Supplementary figure legends

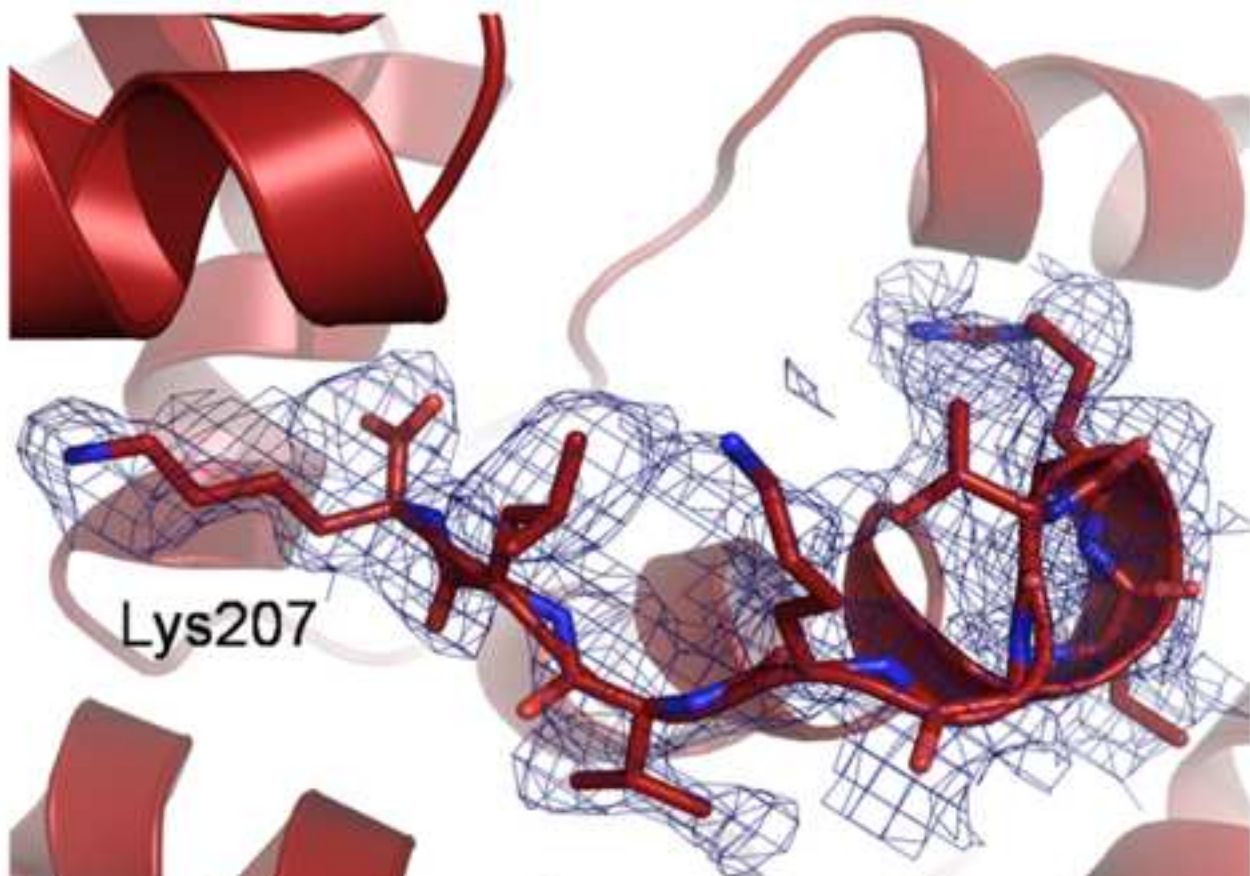
### **Supplementary Figure S1: Experimental MAD map after density modification and simulated annealing map of MjOgg**

A) Experimental MAD map after density modification contoured at  $1\sigma$  level. B) Simulated annealing omit map contoured a  $3\sigma$  level. Both maps are calculated around residues 200-207.

### **Supplementary Figure S2: Simulated annealing omit map of the C-terminal loop of SsOgg**

Residues 200-207 are overlaid onto a simulated annealing omit map contoured at  $3\sigma$ .

**A**



**B**

