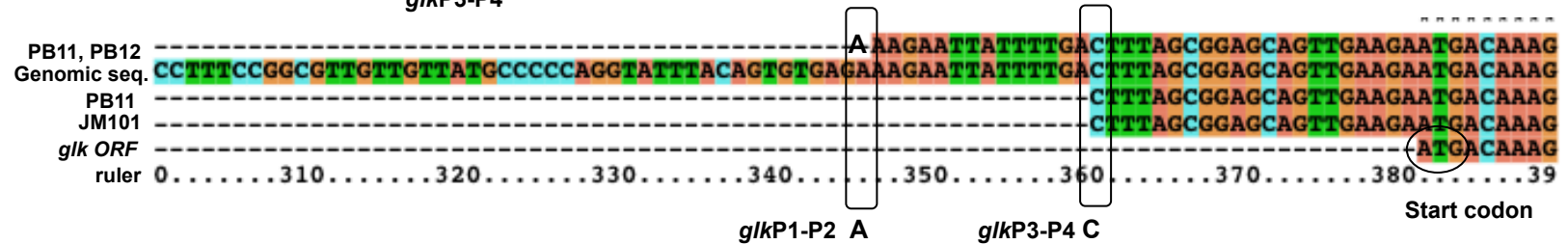
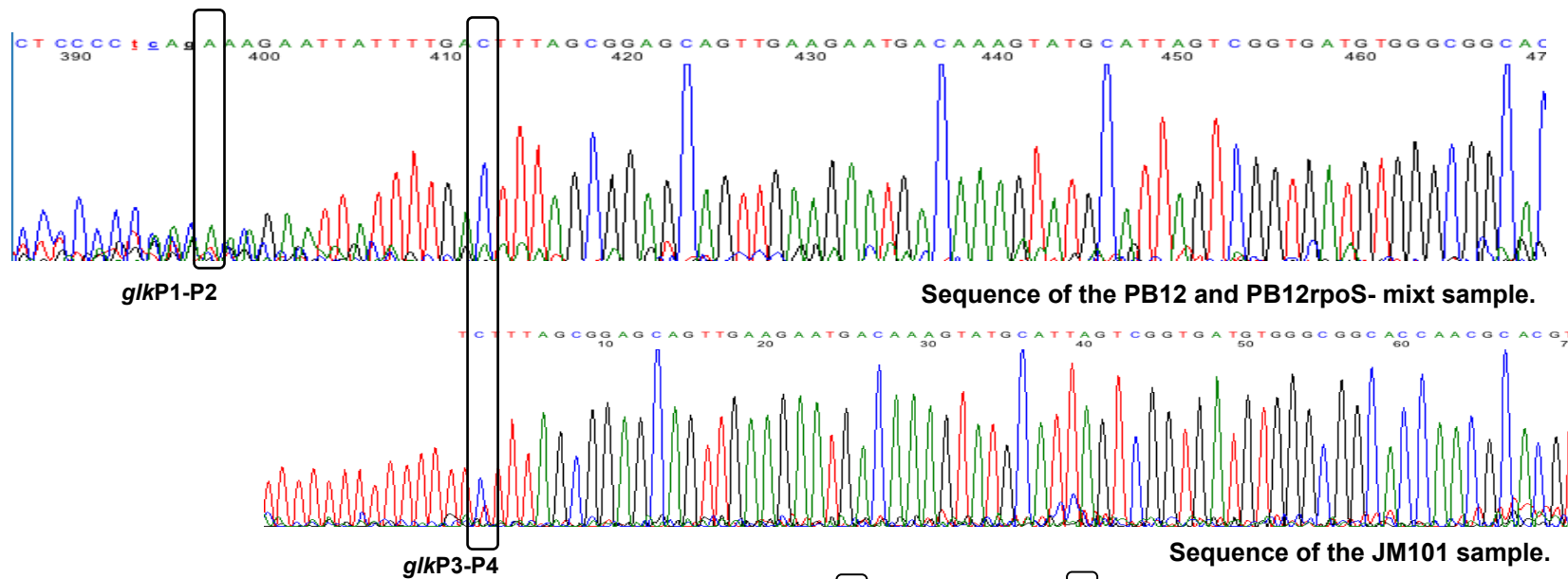
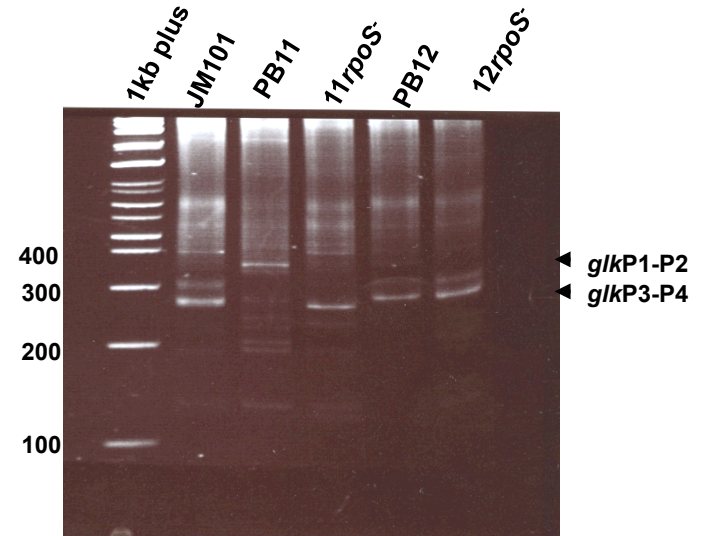


Figure S1

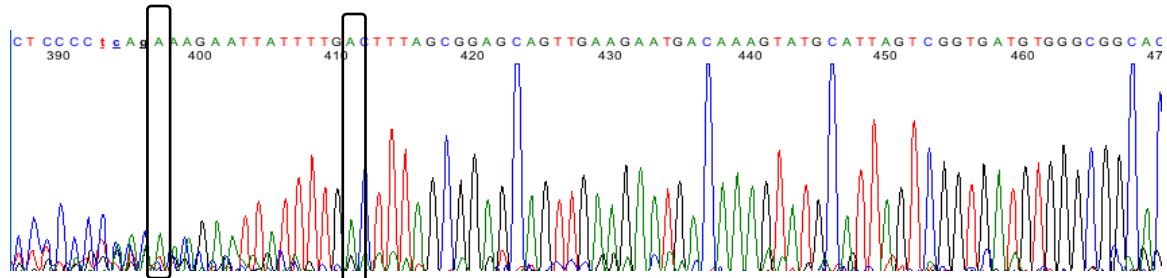
a. *glk* Glucokinase

One of the detected TSSs of the *glk* gene (*glkP1-P2*) is different from one previously reported by one nucleotide (36).

Name: *glkP*
 +1: 2507483
 Sequence: `tacaggagcctgccttccggcgtgtgtatgccccaggatttacagtgtagaAagaattttgactttagc`

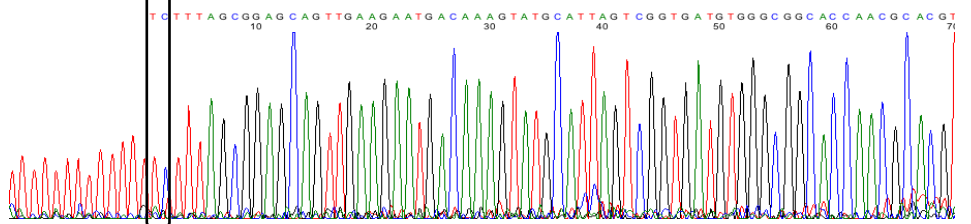


a. *glk* Glucokinase



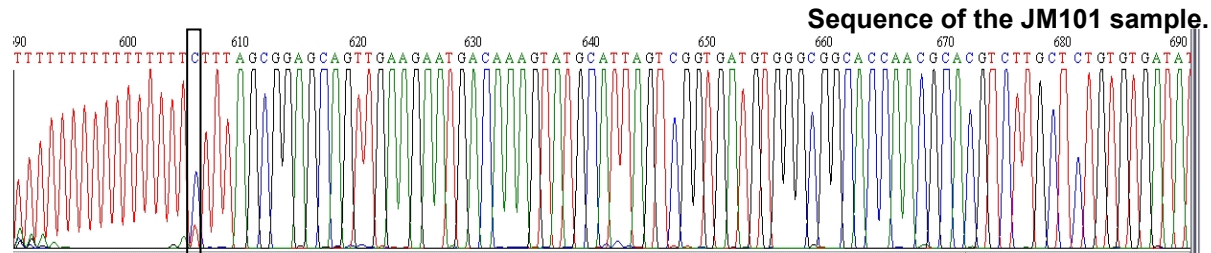
glkP1-P2 A

Sequence of the PB12 and PB12rpoS- mixt sample.

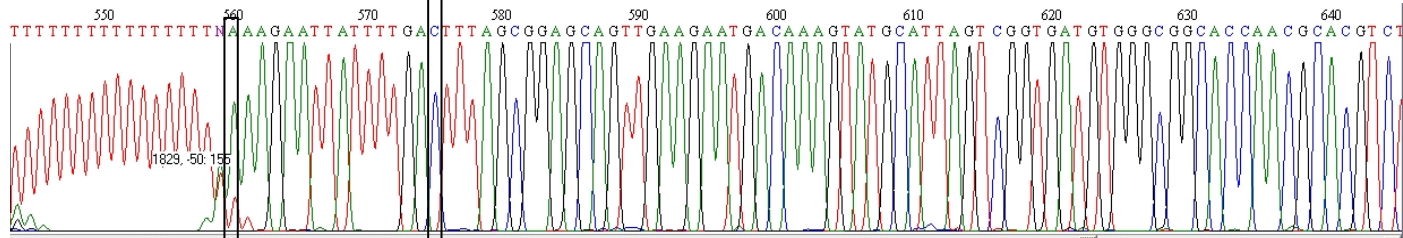


glkP3-P4 C

Sequence of the JM101 sample.



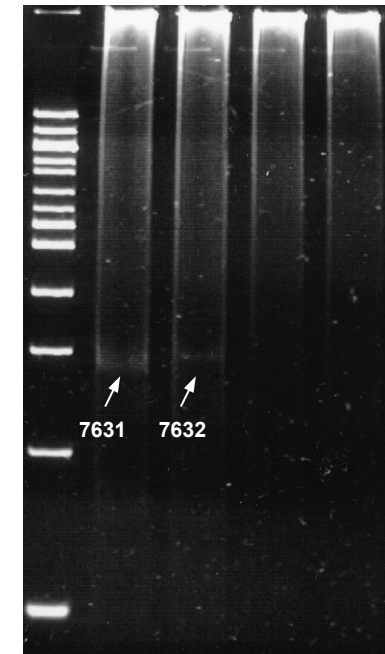
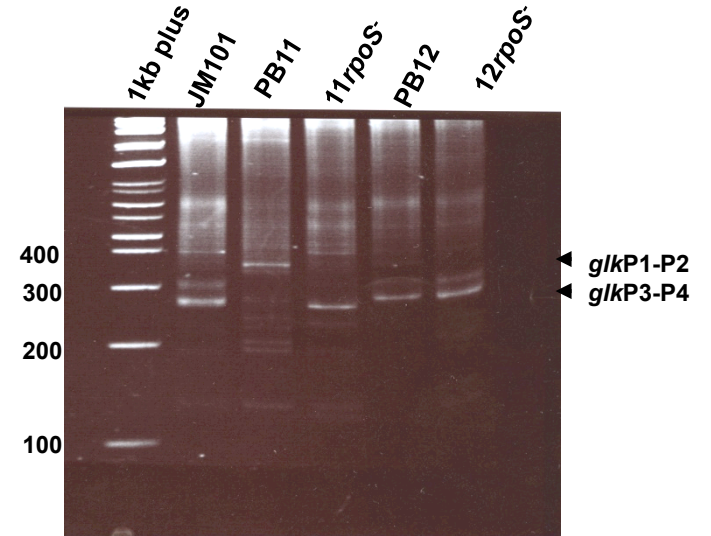
Sequence of the JM101 sample.



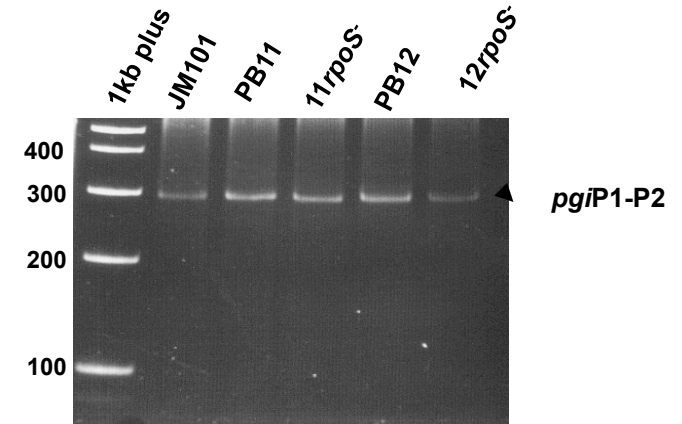
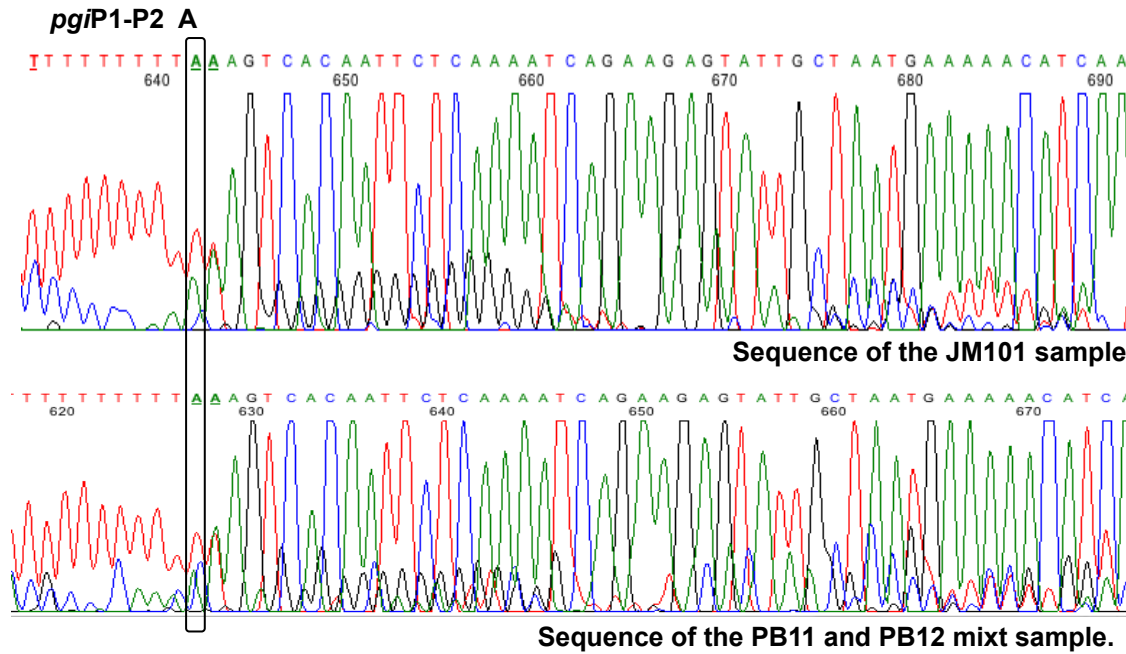
Sequence of the JM101 sample.

glkP1-P2 A

glkP3-P4 C

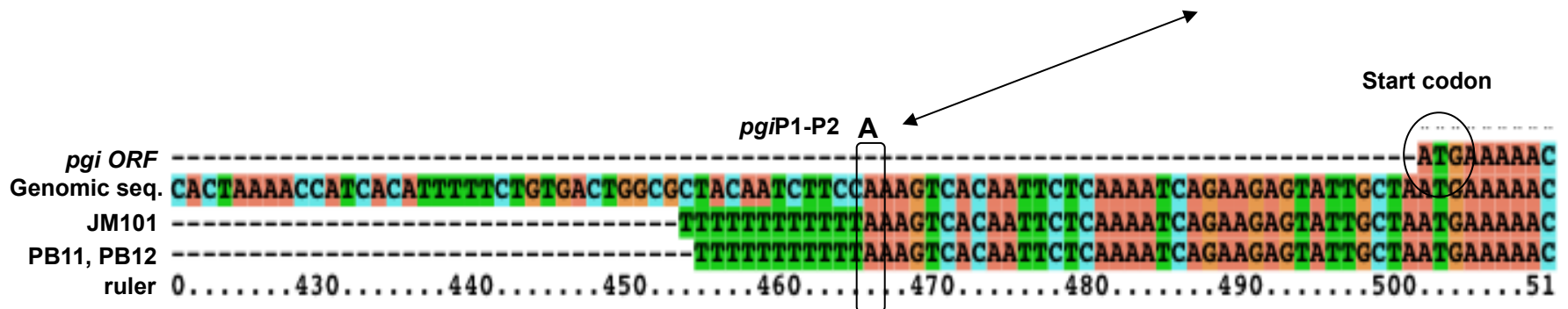


b. *pgi* Glucosephosphate isomerase



The detected TSS of the *pgi* gene is the same as the one previously reported (37).

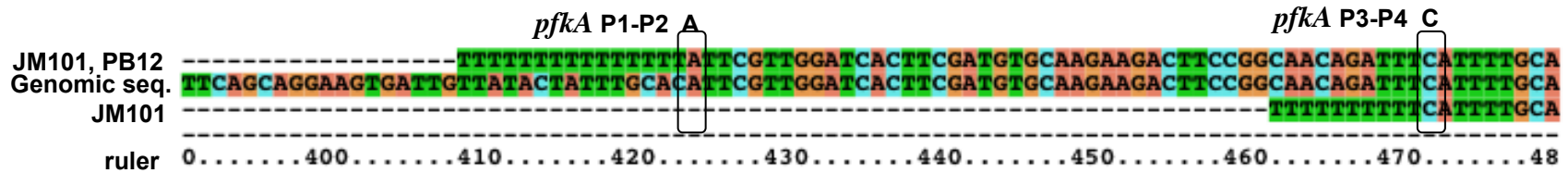
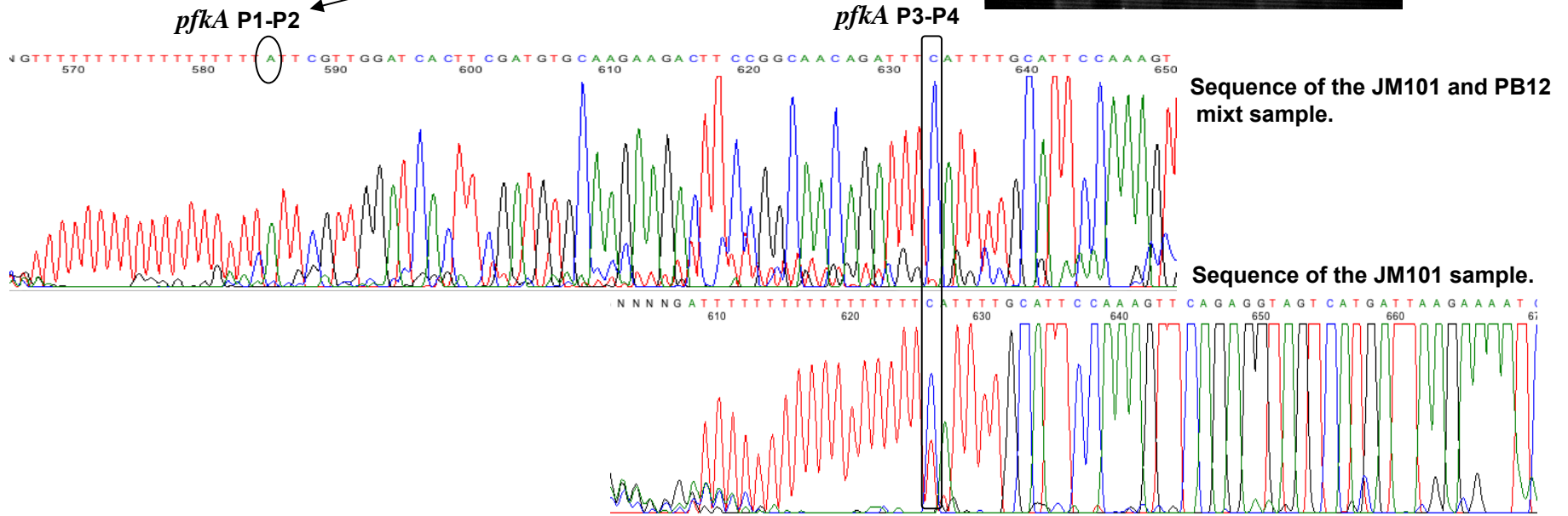
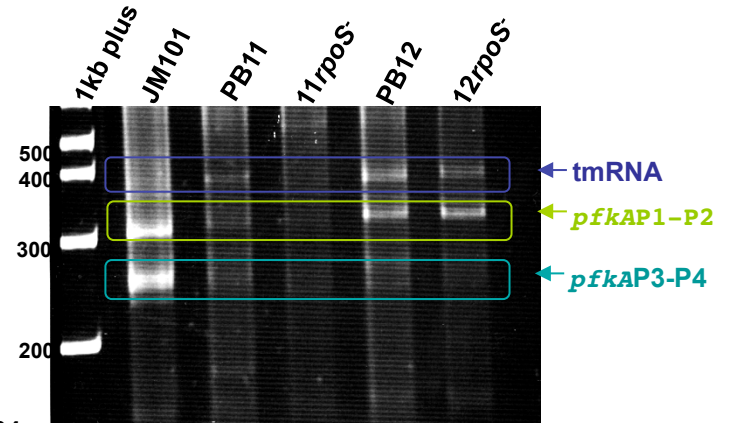
Name:	<i>pgip</i>
+1:	4231745
Sequence:	acattacgctaacggcactaaaaccatcacattttctgtgactggcgctacaatcttccAaagtcacaattctcaaatc



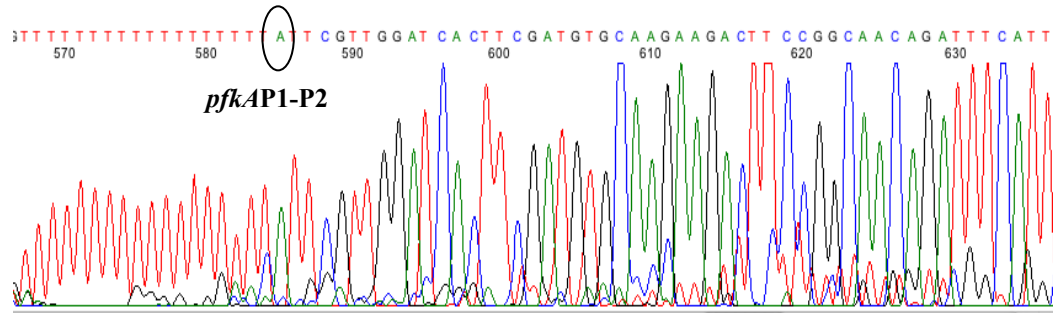
c. *pfkA* 6-Phosphofructokinase I

Name: *pfkAp2*
 +1: 4105497
 Sequence: accgccatttggcctgacctgaatcaattcagcaggaagtgattgttatactatttgcacAAttcgt

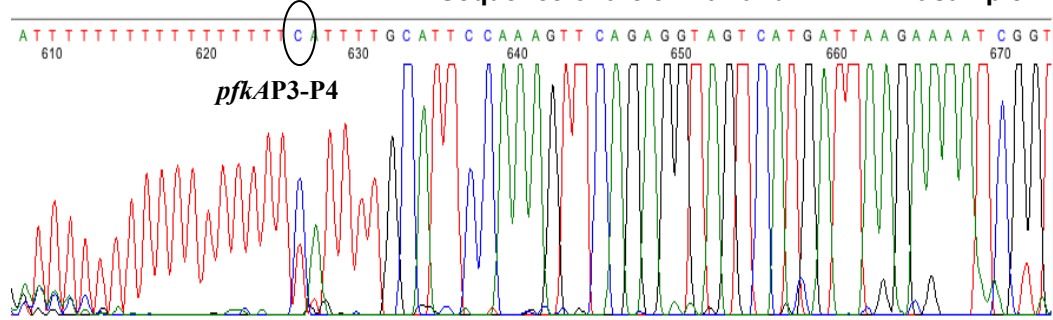
One of the detected TSSs of the *pfkA* gene (*pfkAP1-P2*) is the same as the one previously reported (39).



c. *pfkA* 6-phosphofructokinase I

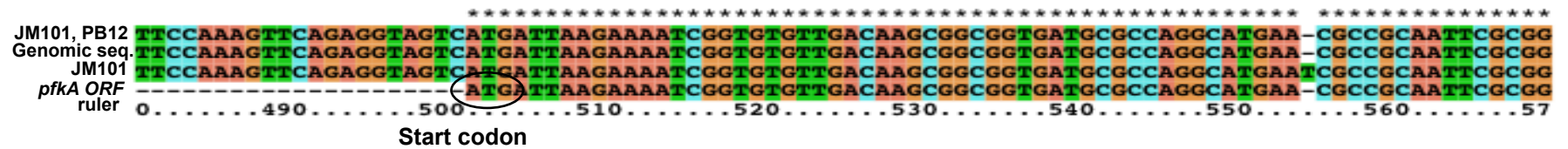
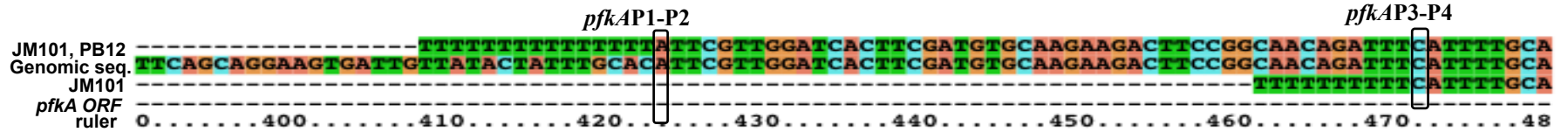
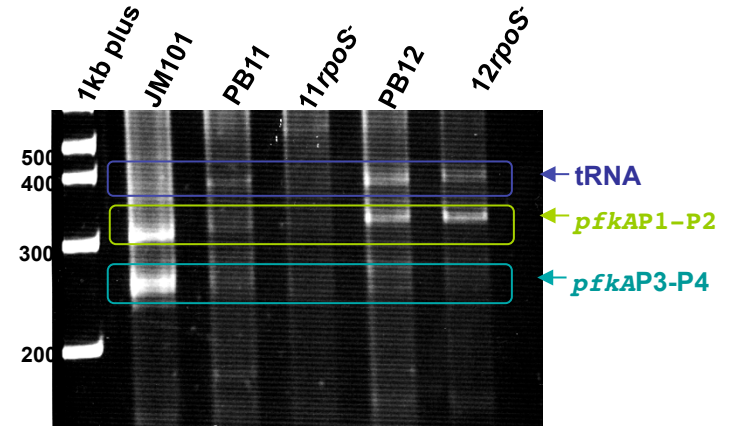
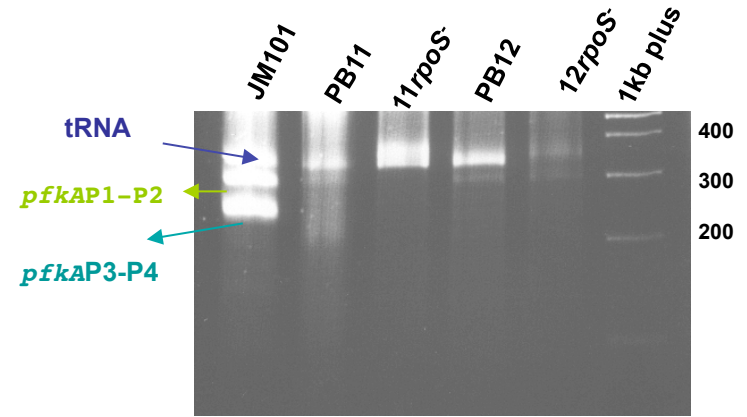


Sequence of the JM101 and PB12 mixt sample.

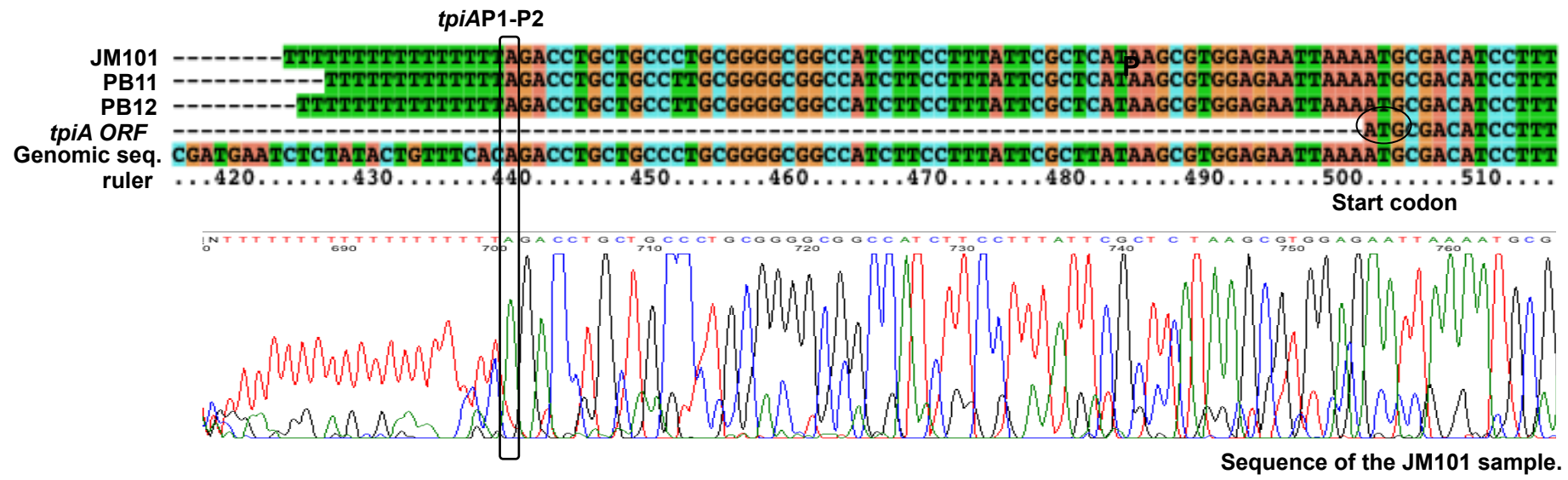
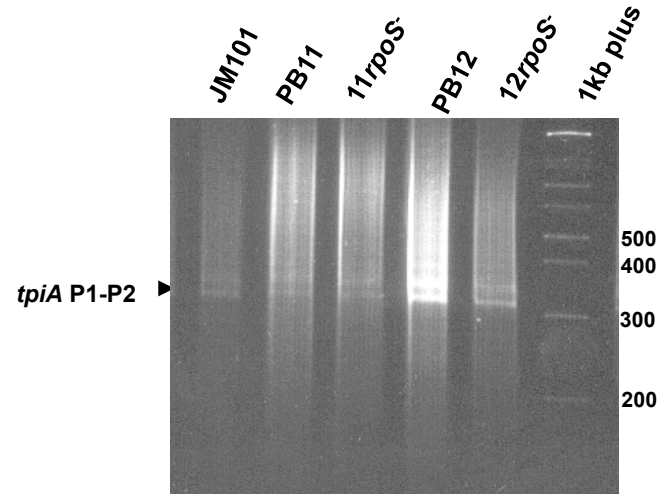


Sequence of the JM101 sample.

Two independent experiments were performed for this gene.



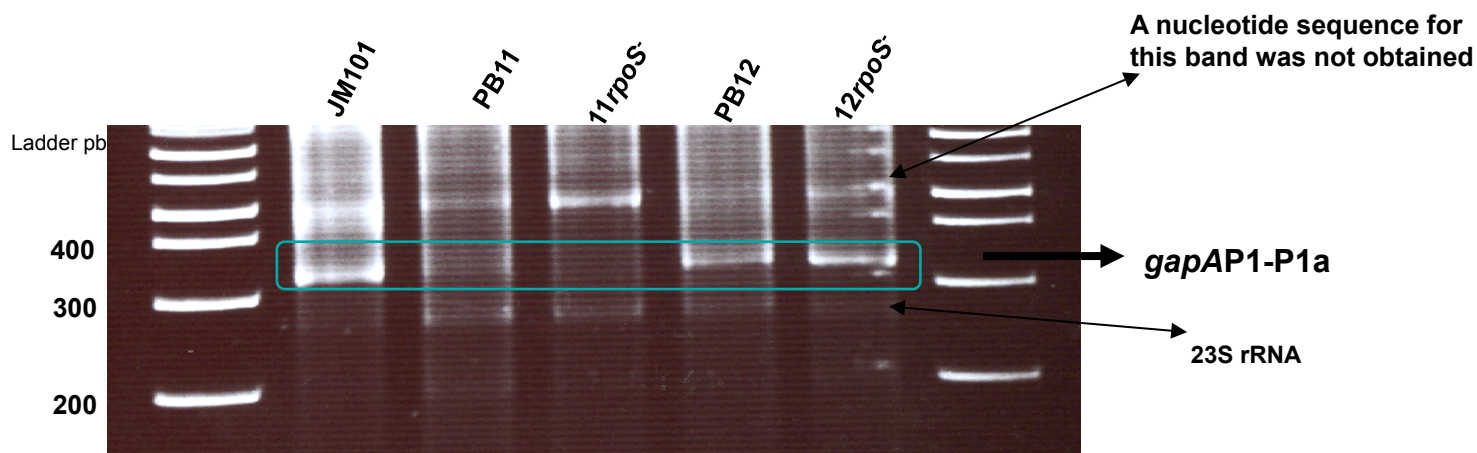
d. *tpiA* Triosephosphate isomerase



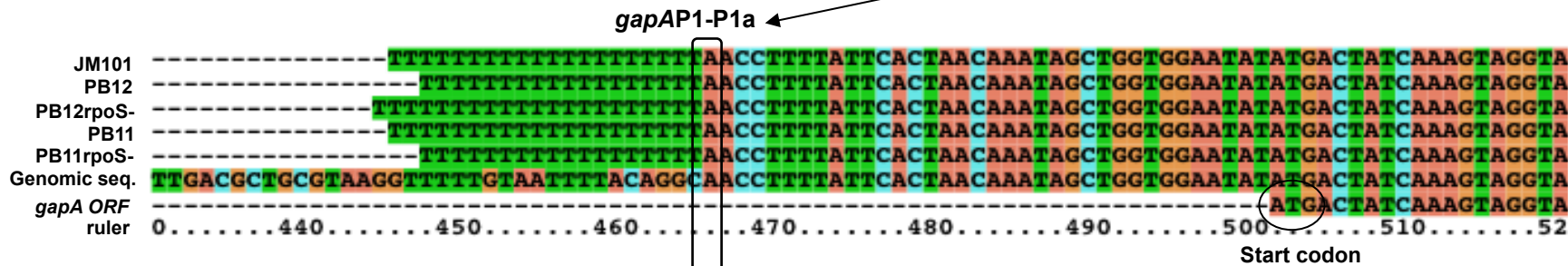
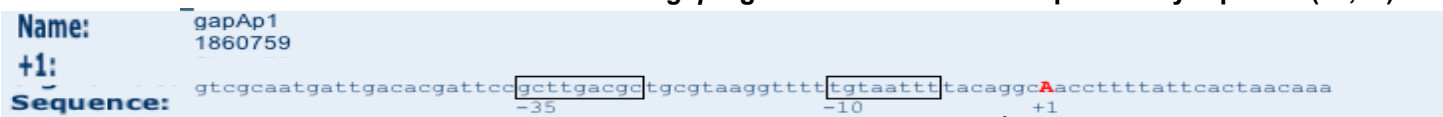
A previously reported TSS of the *tpiA* gene was not detected (40).

Name: *tpiAp*
 +1: 4109547
 Sequence: tctatactgtttcacagacctgctgccttgcggggcggccatcttcctttattcgcttataagcgtggagaattaaa

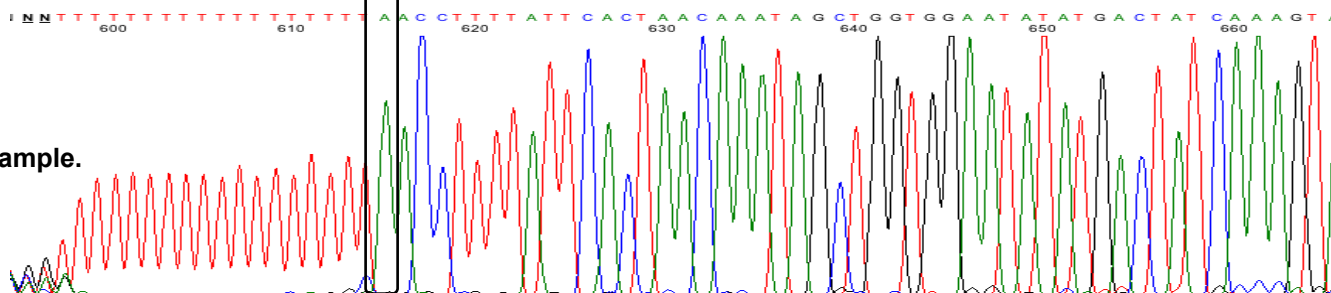
e. *gapA* Glyceraldehyde 3-phosphate dehydrogenase A



The detected TSS of the *gapA* gene is the same as one previously reported (41,43).

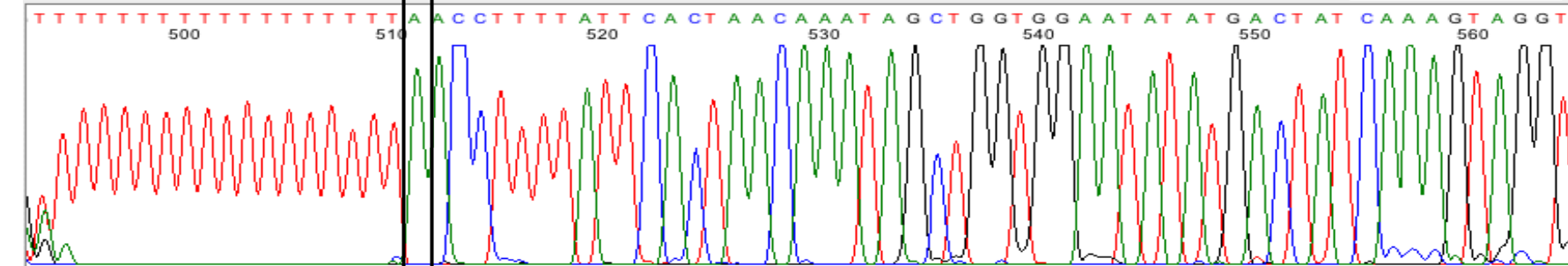


Sequence of the JM101 sample.

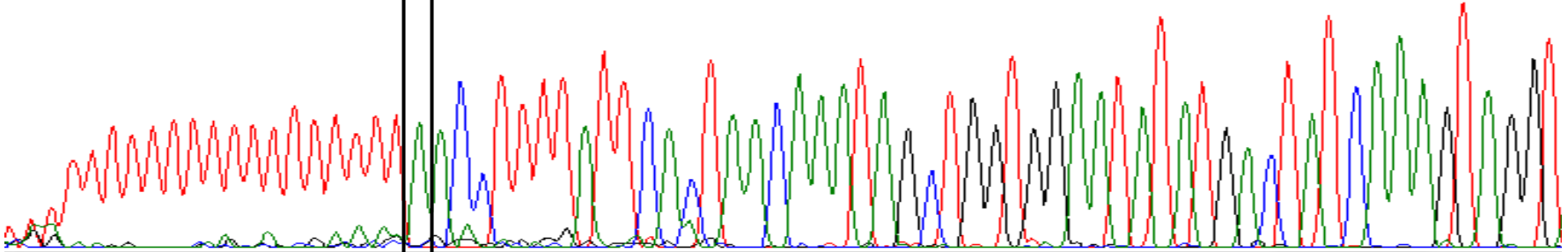


e. *gapA* Glyceraldehyde 3-phosphate dehydrogenase A

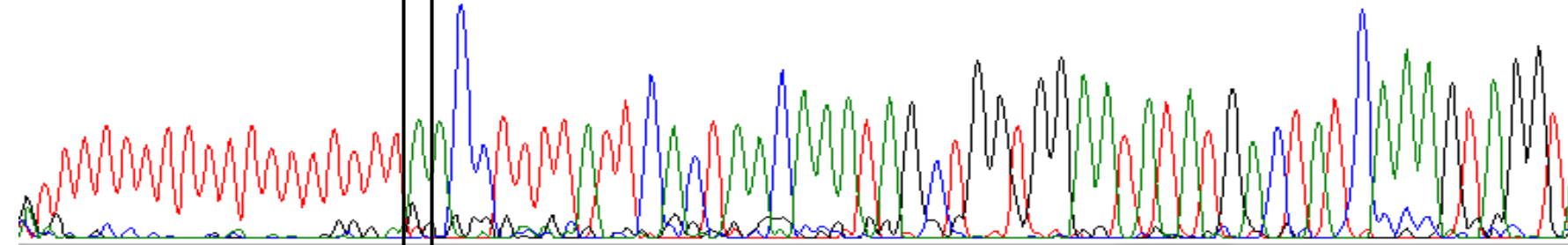
gapAP1-P1a



TTTTTTTTTTTTTTTTTTTTTTTAAACCTTTTATTCACTAACAAATAGCTGGTGGAAATATATGACTATCAAAGTAGGT



NTTTTTTTTTTTTTTTTTTTTTTAAACCTTTTATTCACTAACAAATAGCTGGTGGAAATATATGACTATCAAAGTAGGT

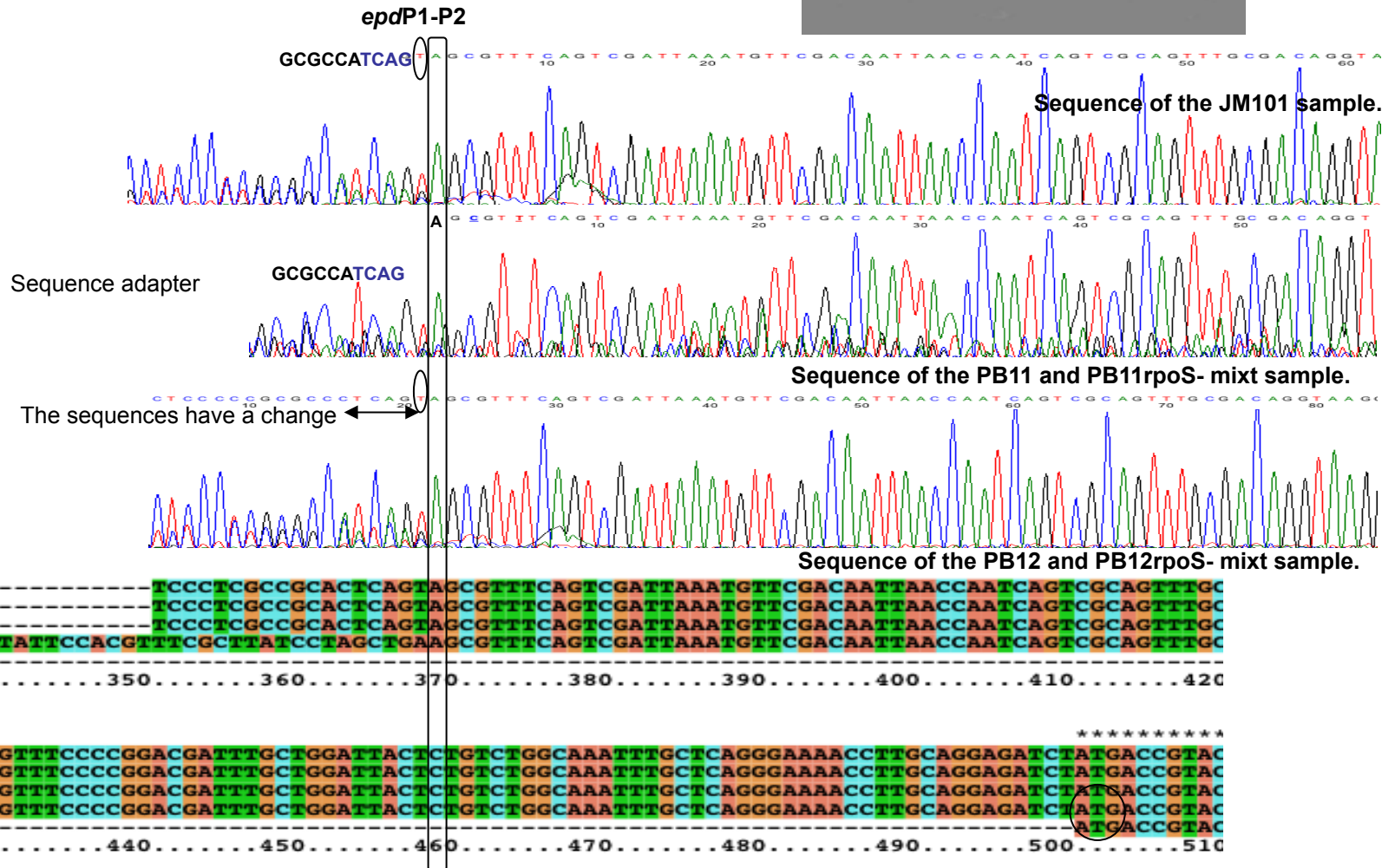
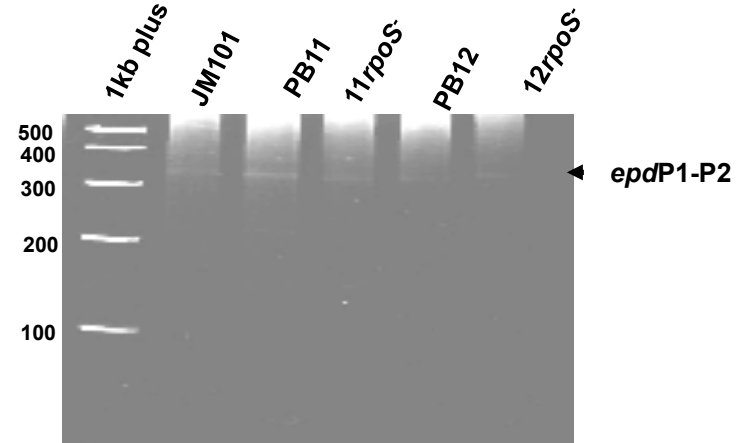


gapAP1-P1a

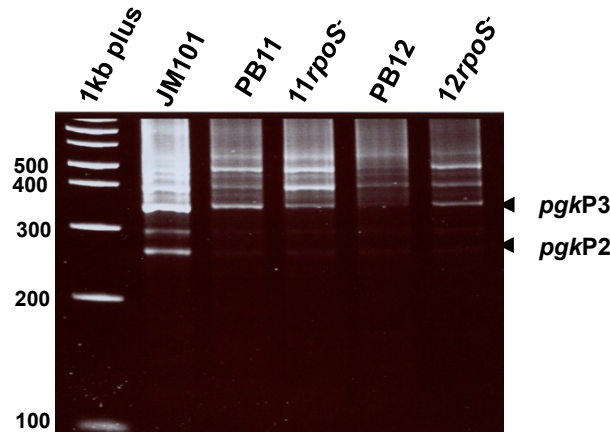
f-1. *epd* D-erythrose 4-phosphate dehydrogenase

The detected TSS of the *epd* gene is the same as the one previously reported (45).

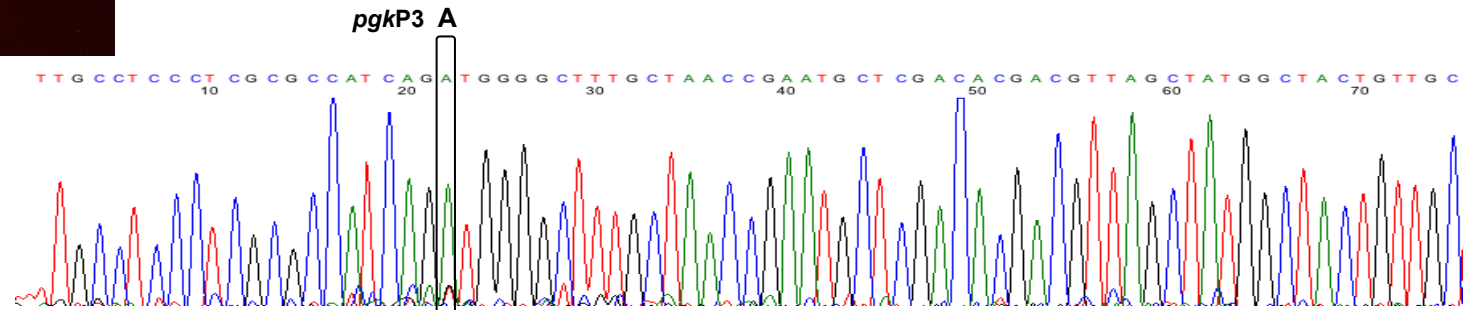
Name: *epd*
 3071845
 +1: aatgtcttcttcggtggacaaaacatttcctttttattccaacgttttcgcttatcccttagctgaAagcgtttcagtcgatta
 Sequence: -35 -10 +1



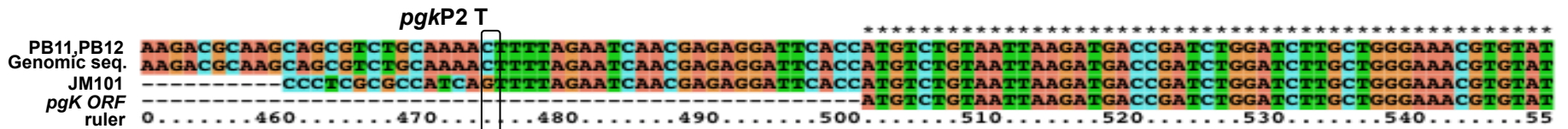
f-2. *pgk*, Phosphoglycerate kinase.



A previously reported TSS of the *pgk* gene was not detected (45).

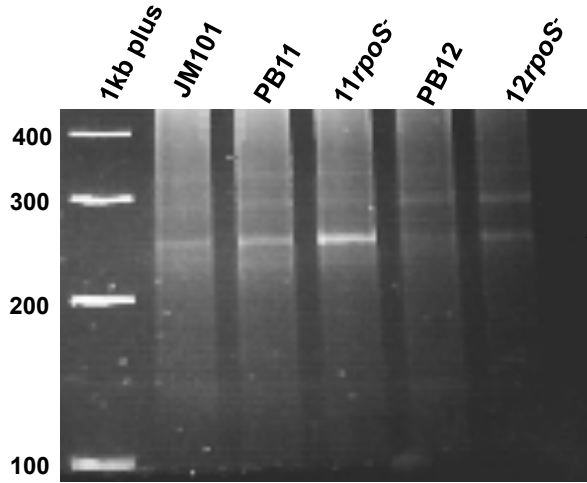


Sequence of the PB11 and PB12 mixt sample

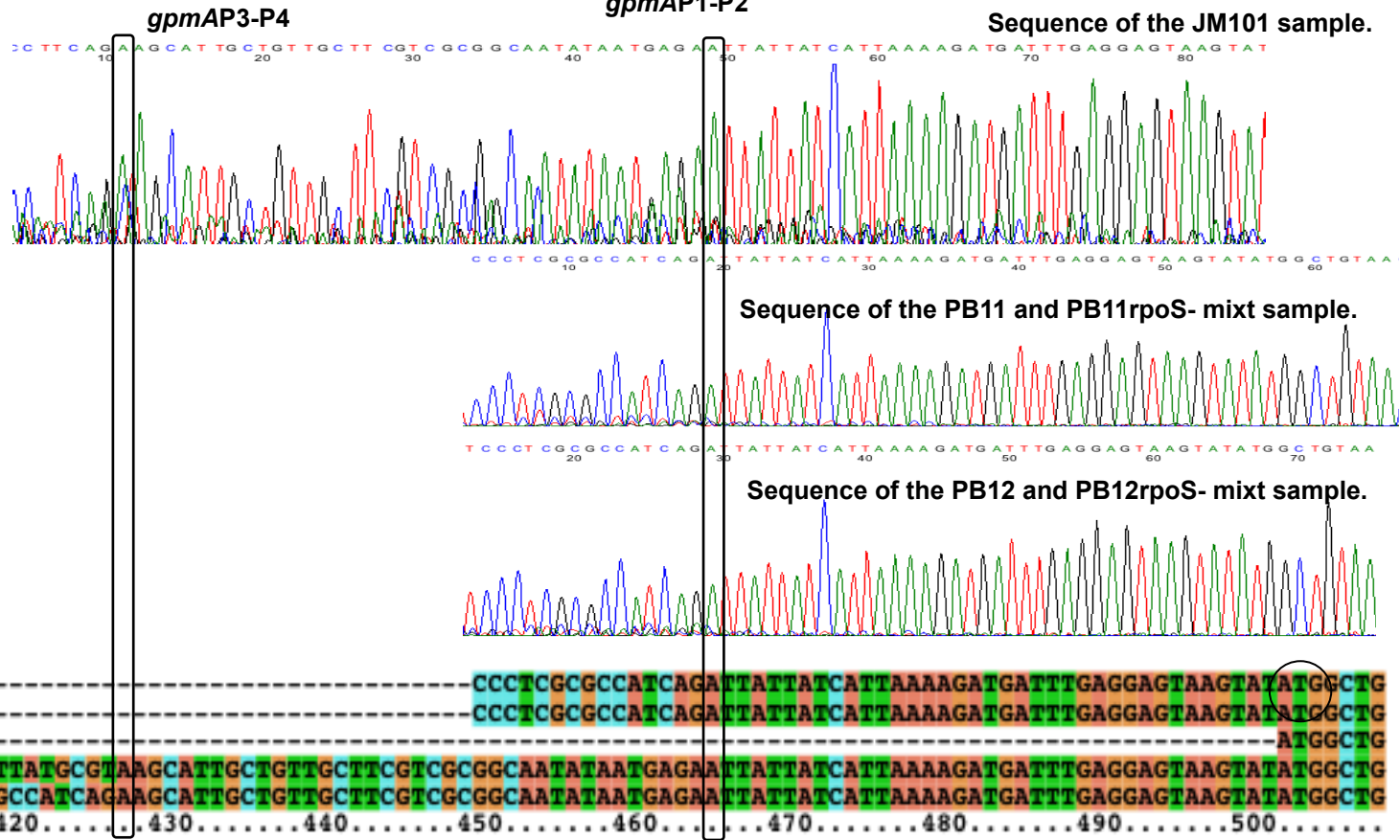
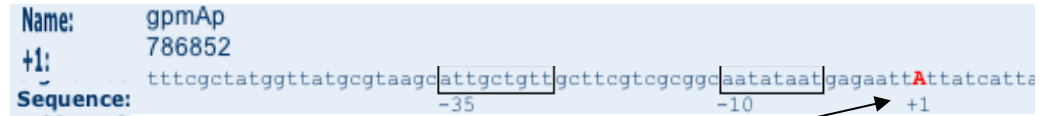


Sequence of the JM101 sample.

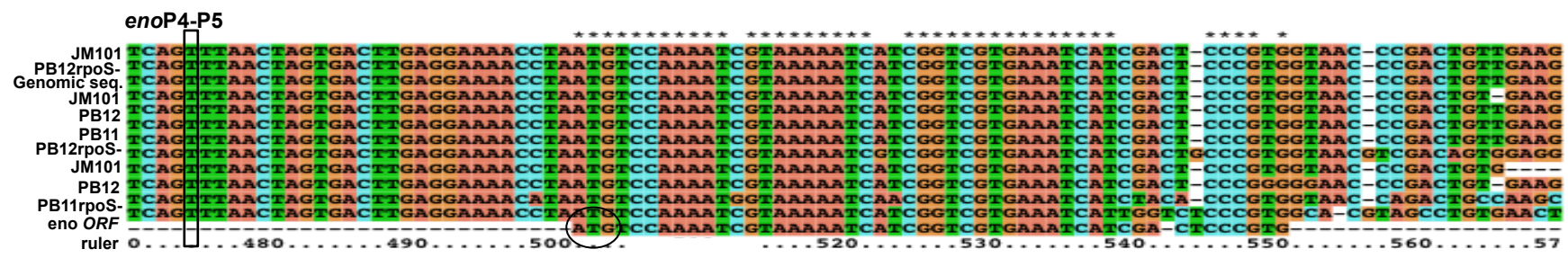
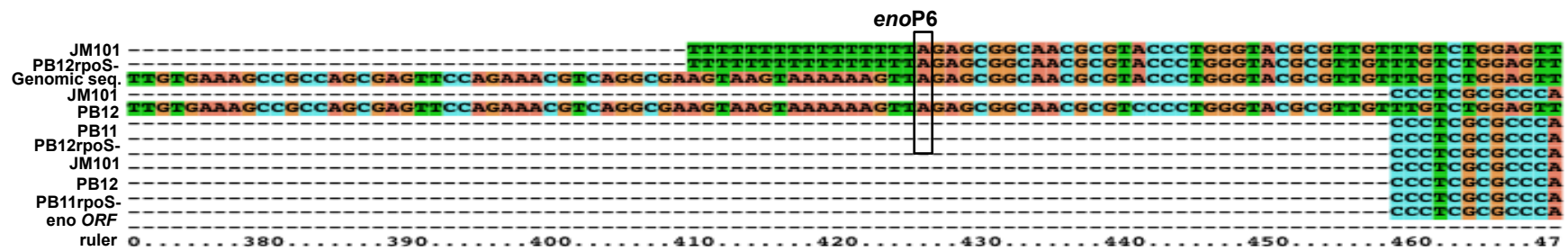
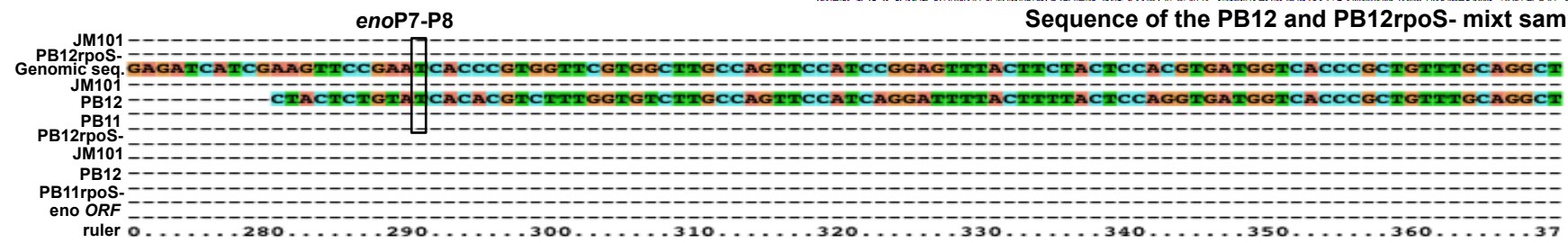
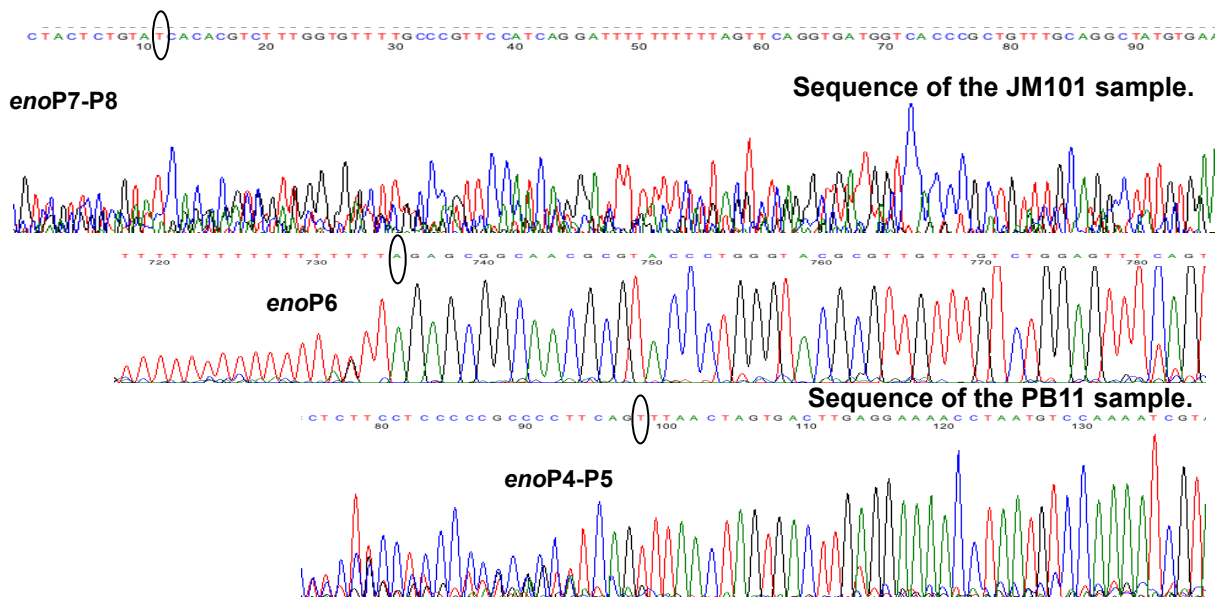
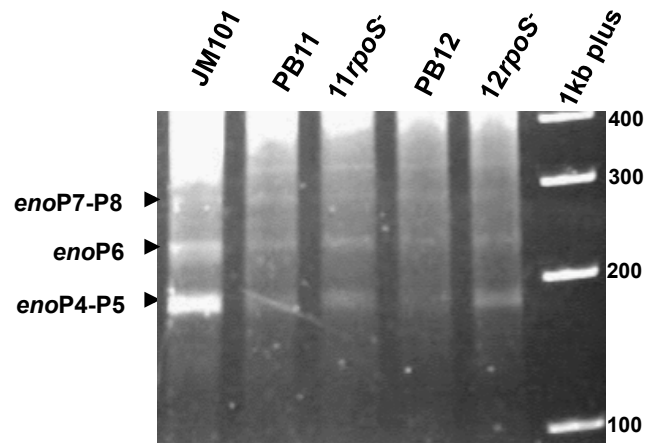
g. *gpmA* Phosphoglyceromutase A



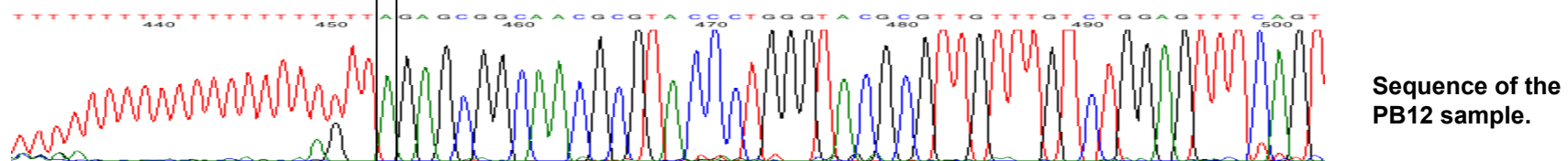
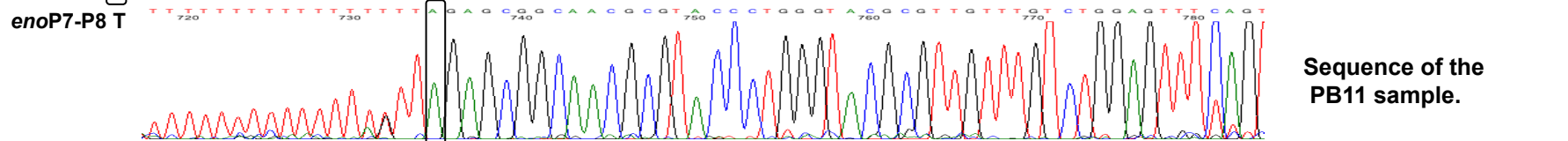
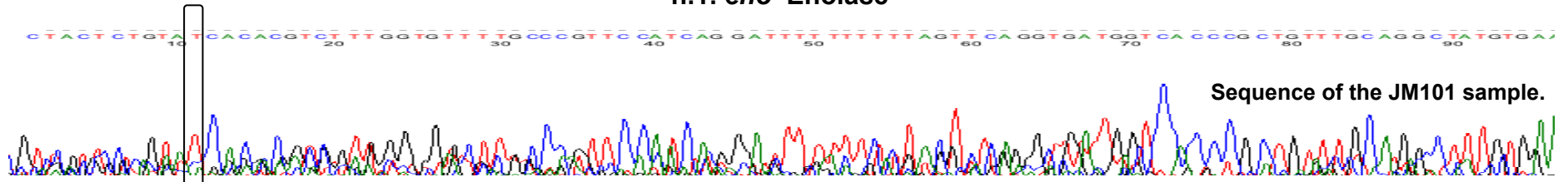
One of the detected TSSs of the *gpmA* gene is different from one previously inferred by two nucleotides (46).



h. eno Enolase



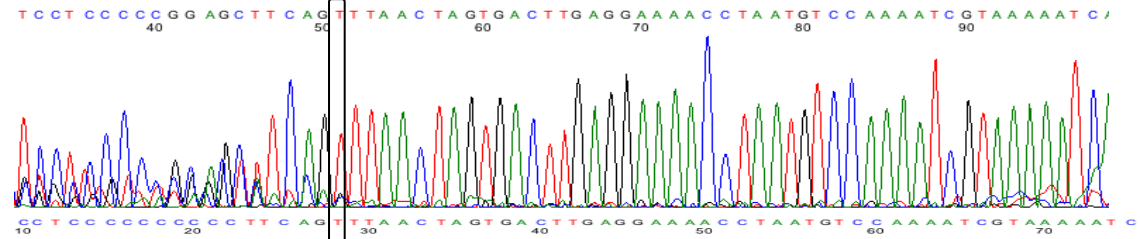
h.1. *eno* Enolase



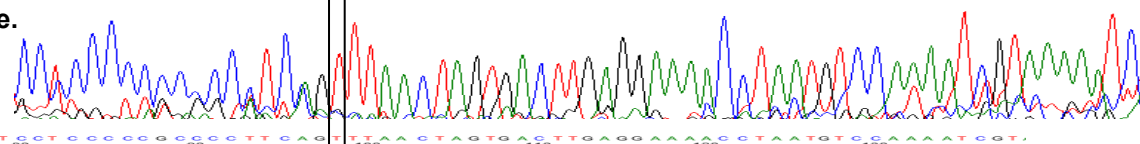
*eno*P6 A

*eno*P4-P5 T

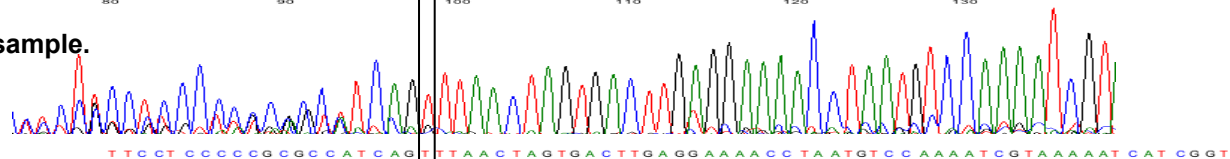
Sequence of the PB11 and PB11*rpoS*- mixt sample.



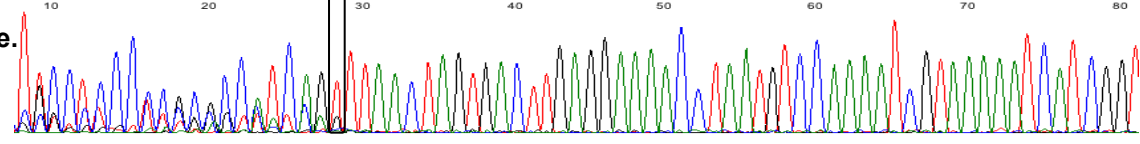
Sequence of the JM101 sample.



Sequence of the PB12 and PB12*rpoS*- mixt sample.

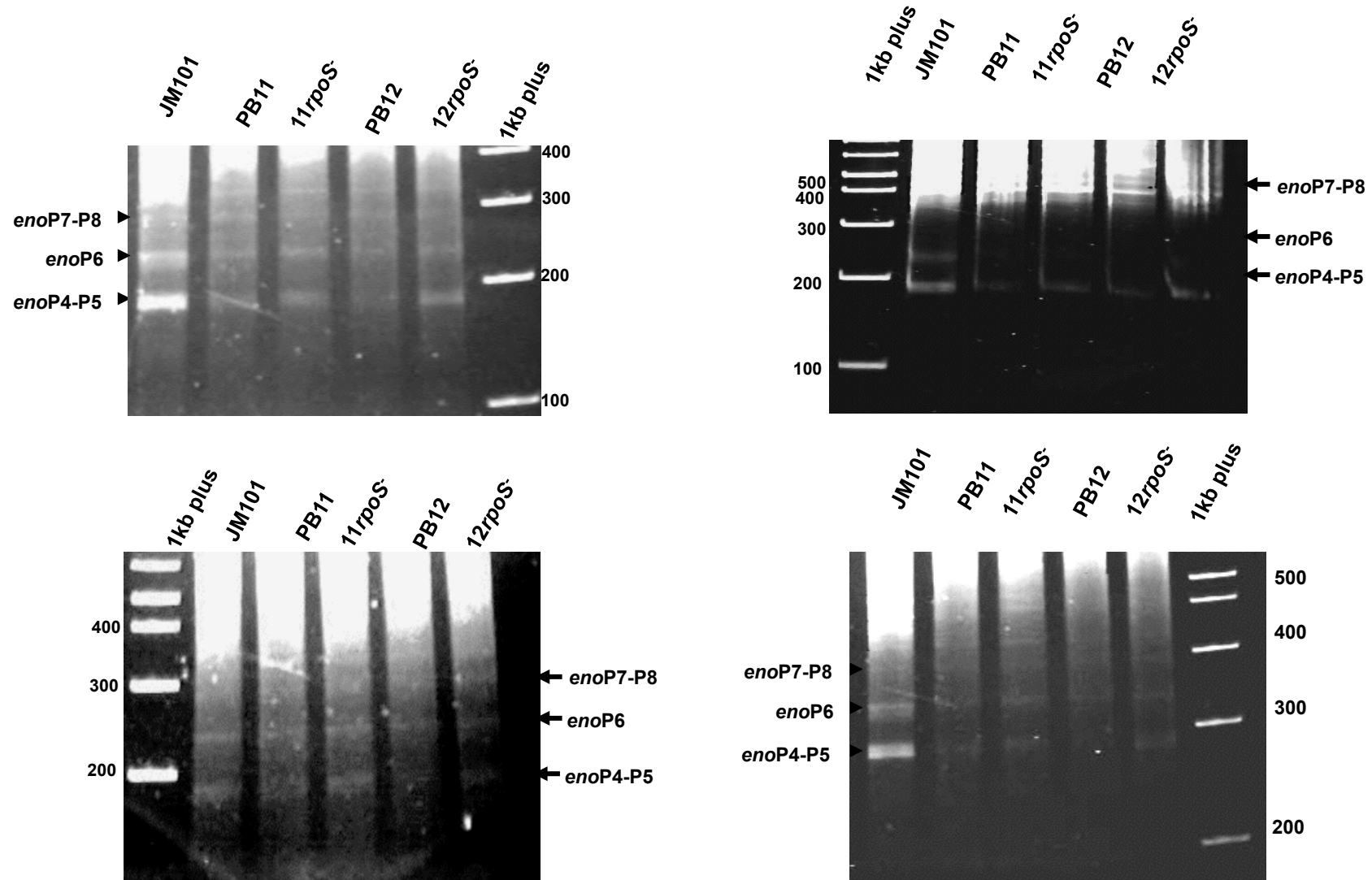


Sequence of the JM101 sample.



h.2 *eno* Enolase

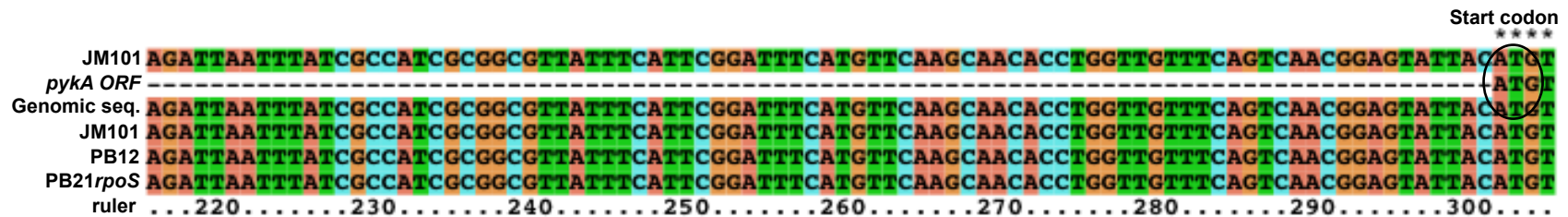
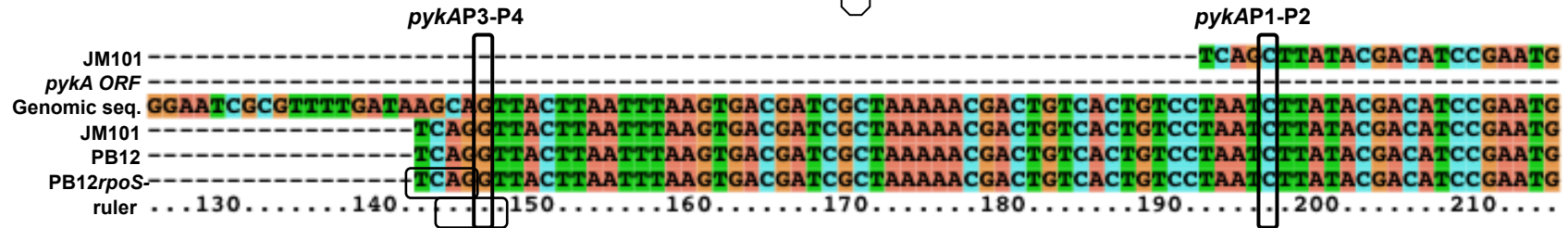
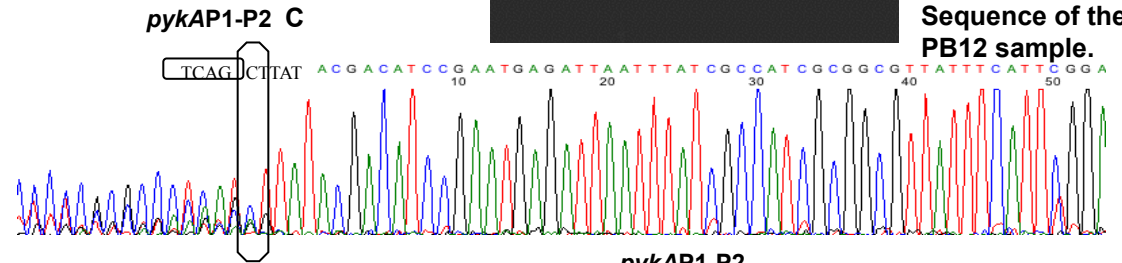
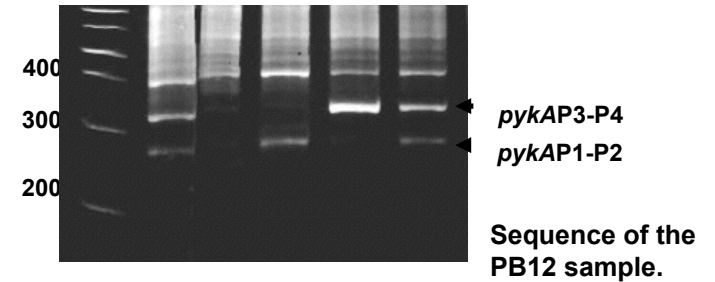
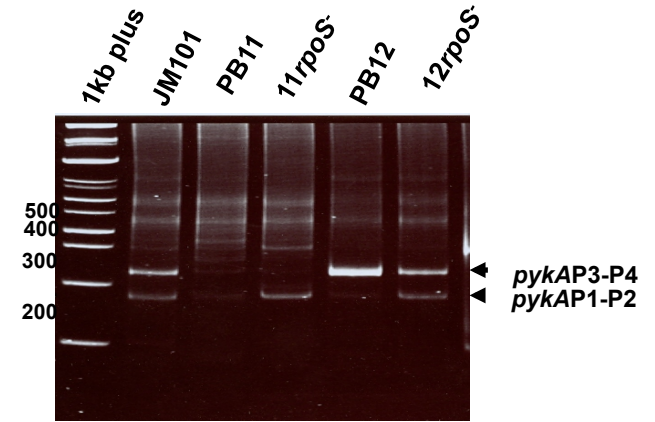
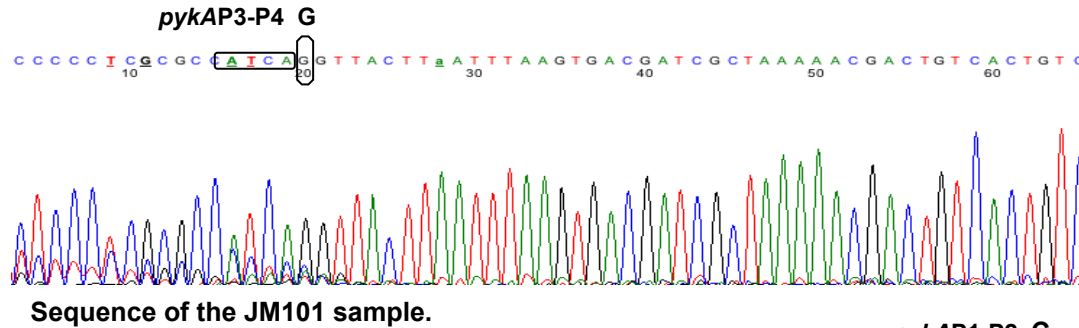
Four independent experiments for this gene produced the same results.



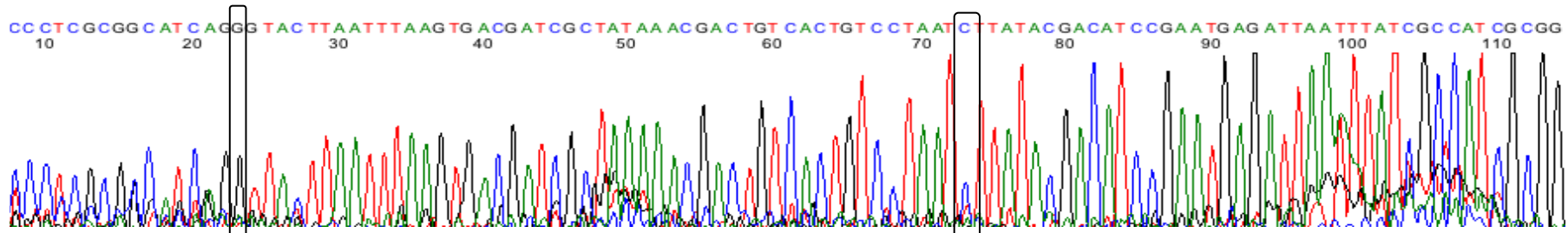
Three previously reported TSSs for this gene with long untranslated regions were not detected (47).

i-2 *pykA* Pyruvate kinase A

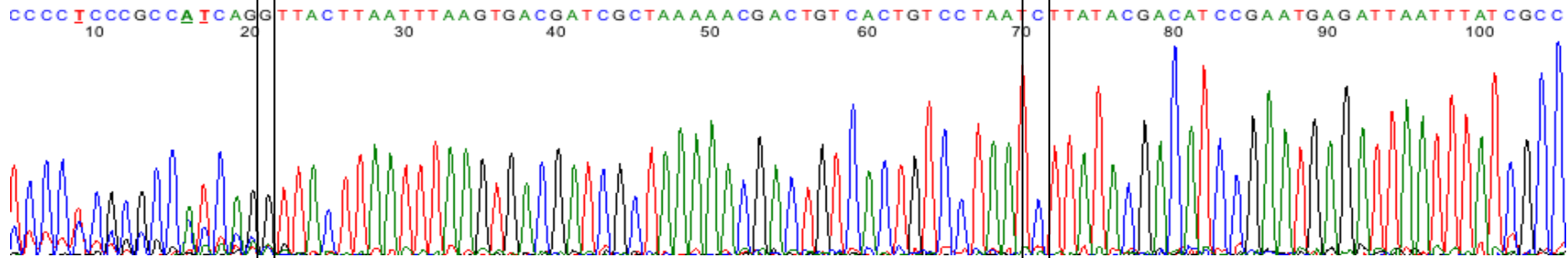
Two independent experiments produced the same results.



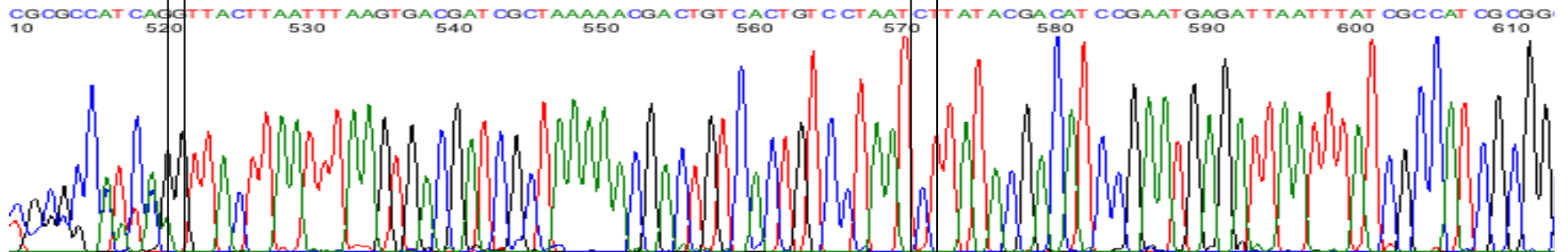
i-2 *pykA* Pyruvate kinase A



Sequence of the JM101 sample.

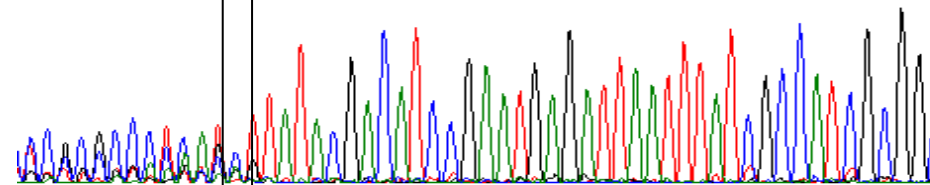


Sequence of the PB12 sample.



Sequence of the PB12 and PB12rpoS- mixt sample.

ACGACATCCGAATGAGATTAATTTATCGCCATCGCGG
10 20 30

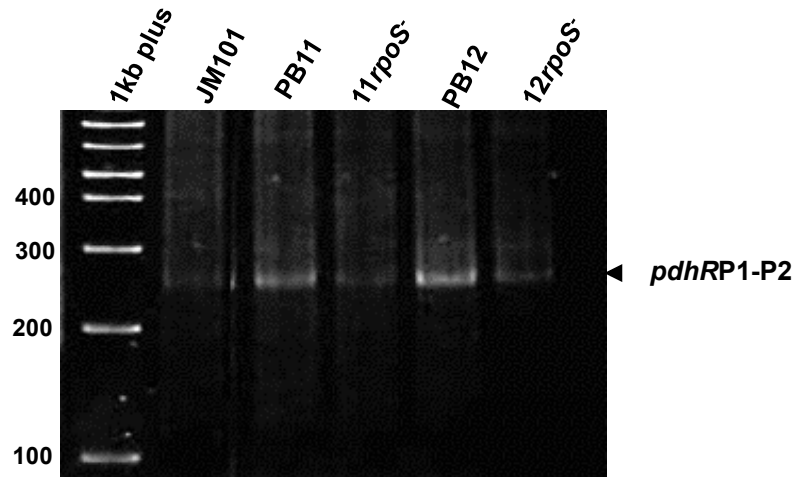


Sequence of the JM101 sample.

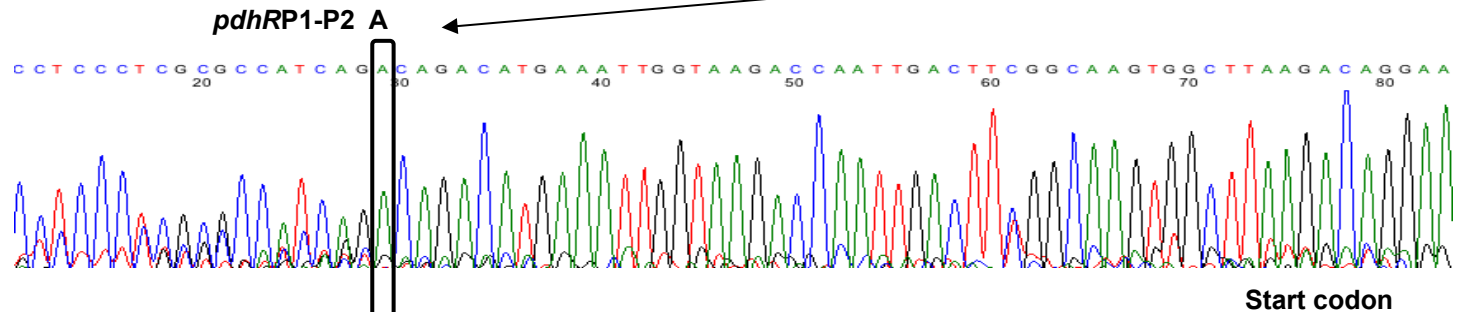
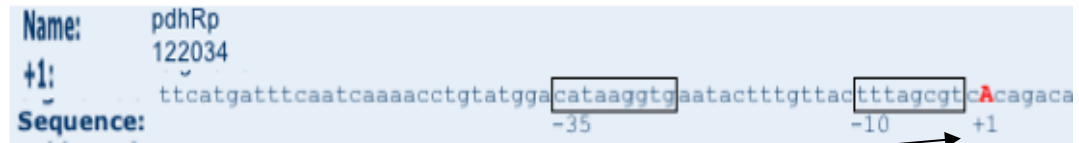
pykAP3-P4 G

pykAP1-P2 C

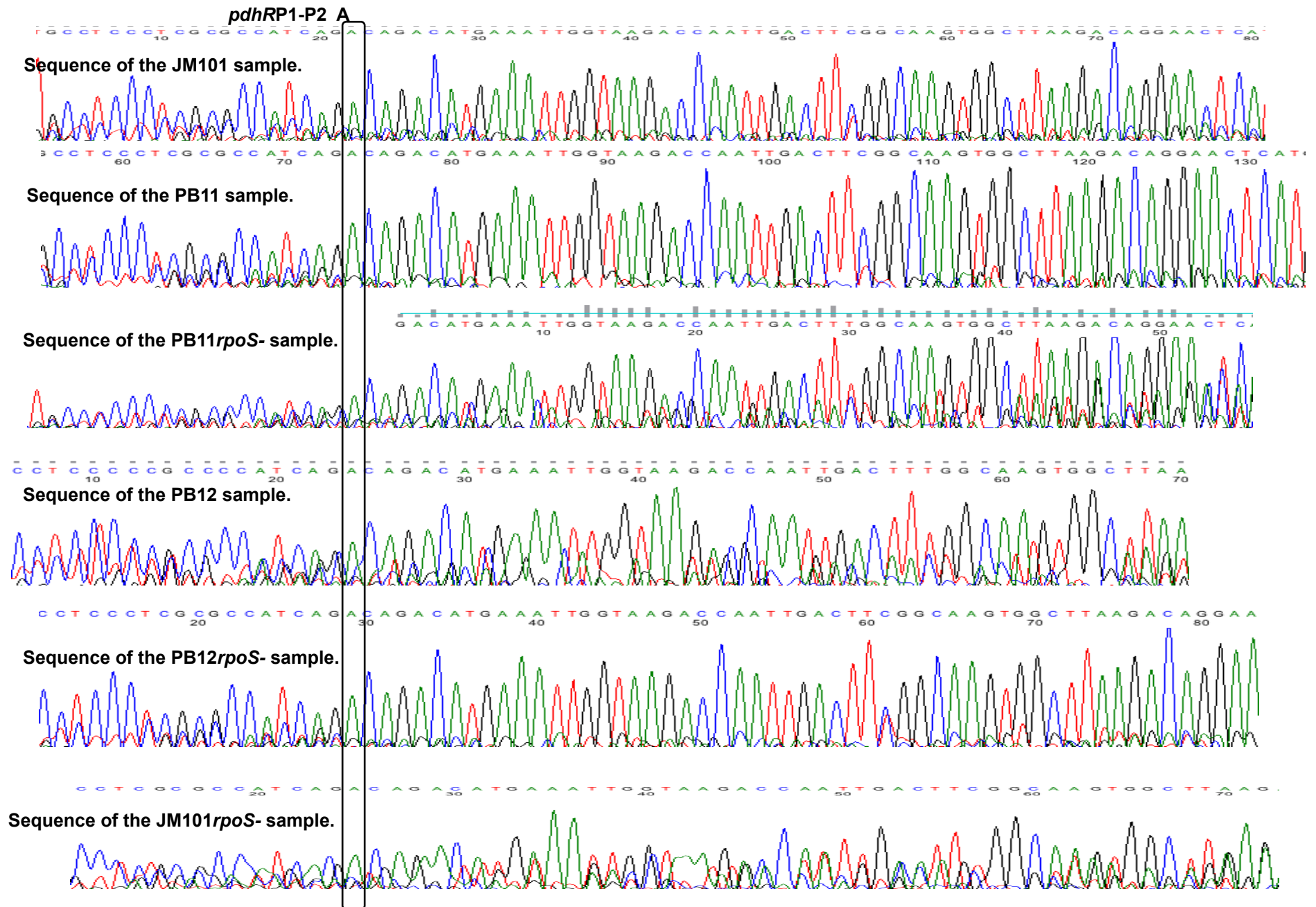
j-1 *pdhR* Transcriptional regulator of the Pyruvate dehydrogenase



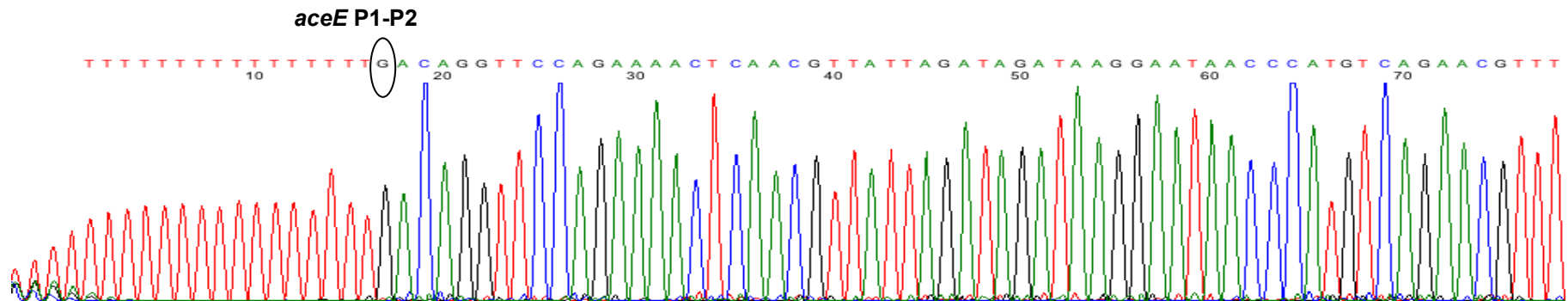
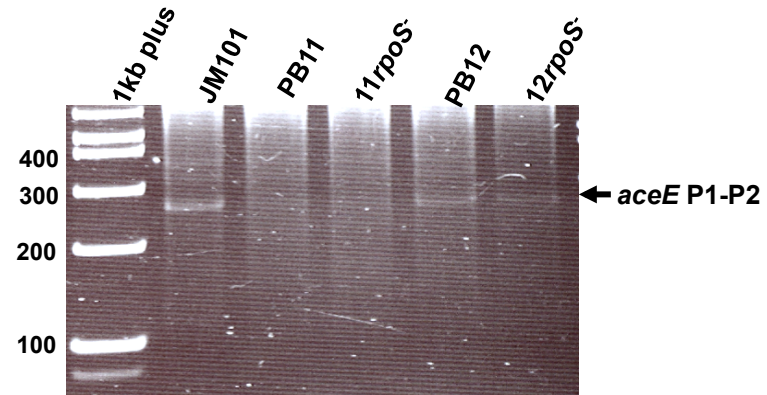
The detected TSS of the *pdhR* gene is the same as the one previously reported (51,52).



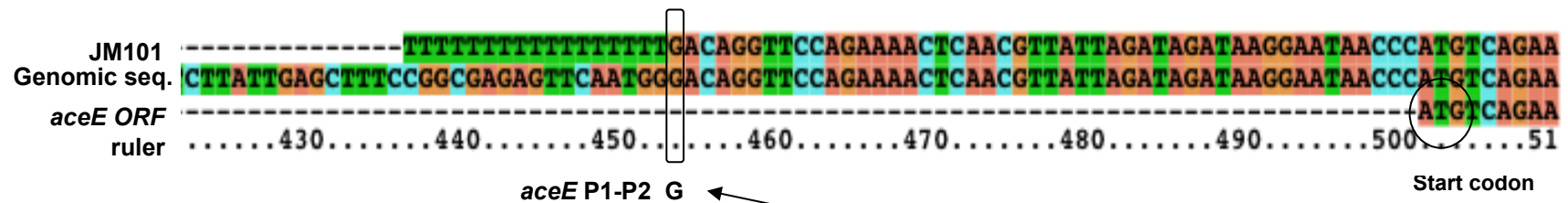
j-1 *pdhR* Transcriptional regulator of the Pyruvate dehydrogenase



j-2 *aceE* Pyruvate dehydrogenase E1p subunit



Sequence of the JM101 sample.



Name:	<i>aceE</i> p
+1:	122970
Sequence:	aagcgcggcaactaaacgtagaacctgtcttattgagcttccggcgagagttcaatgggAcaggttcagaaaactcaac

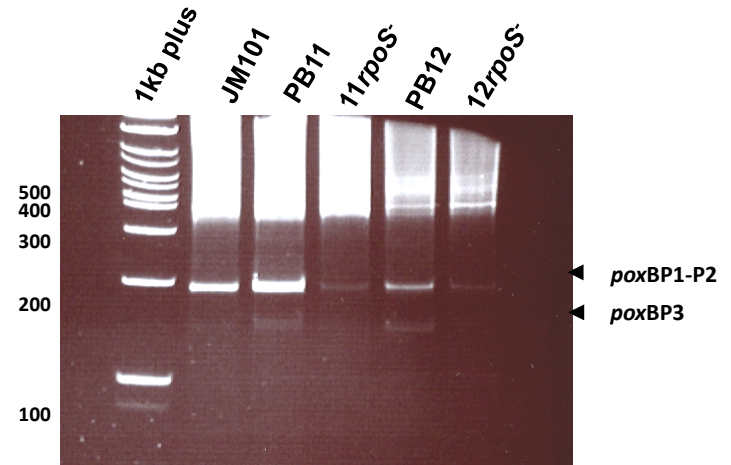
The detected TSS of the *aceE* gene is different from a previously reported by one nucleotide (50,51).

k. *poxB* Pyruvate oxidase

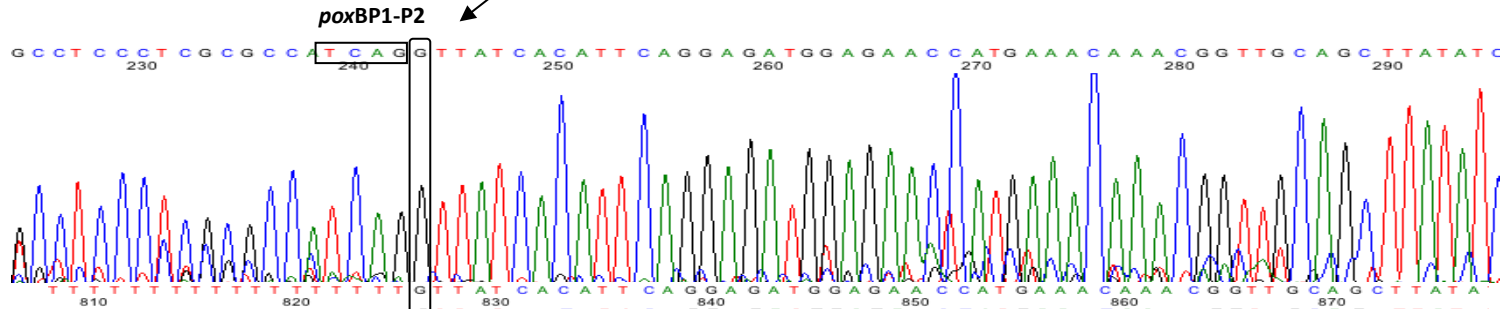
The detected TSS of the *poxB* gene is the same as the one previously reported (57,58).

Name: *poxBp*
 +1: 910299
 Sequence: ttagtgccctcctttctctcccatcccttccccctccgtcagatgaactaaacttgttaccGttatcac

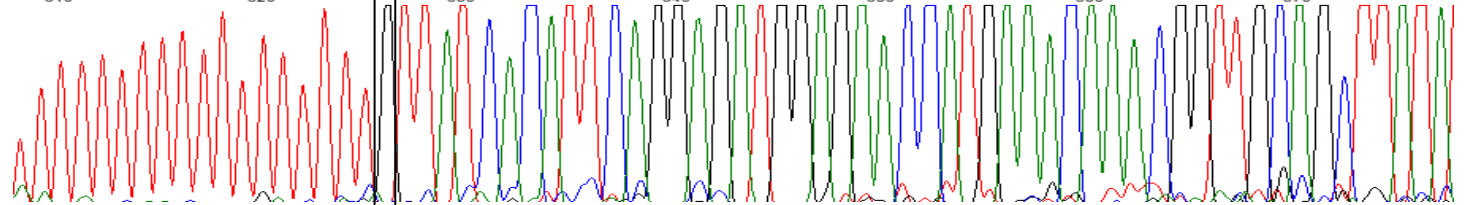
two methodologies



Sequence of the PB11 and PB12 mixt sample.

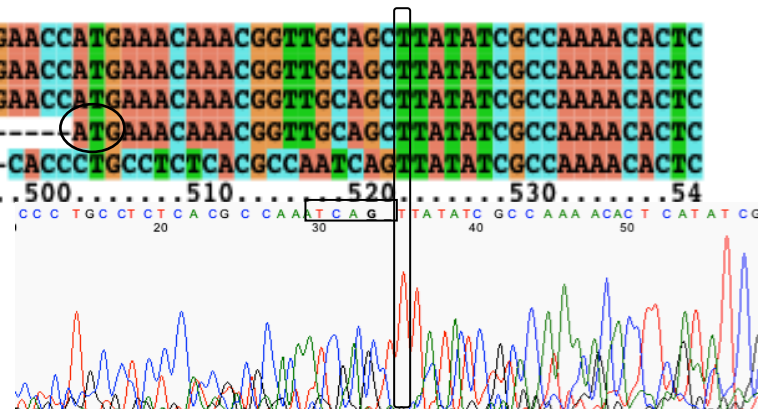


Sequence of the JM101 sample.



JM101 ---TTTTTTTTTTTTTTTTTTTGTATCACATTCAGGAGATGGAGAACCATGAAACAAACGGTTGCAGCTTATATCGCCAAAAACACTC
 PB11,PB12 ---GCCTCCCTCGCGCCATCAGGTATCACATTCAGGAGATGGAGAACCATGAAACAAACGGTTGCAGCTTATATCGCCAAAAACACTC
 Genomic seq. CAGATGAACATAAATTGTTACCGTATCACATTCAGGAGATGGAGAACCATGAAACAAACGGTTGCAGCTTATATCGCCAAAAACACTC
poxB ORF -----ATGAAACAAACGGTTGCAGCTTATATCGCCAAAAACACTC
 PB11,PB12 CACCCGCGCTCAGCCCAATCAGTTATATCGCCAAAAACACTC
 ruler460.....470.....480.....490.....500.....510.....520.....530.....54

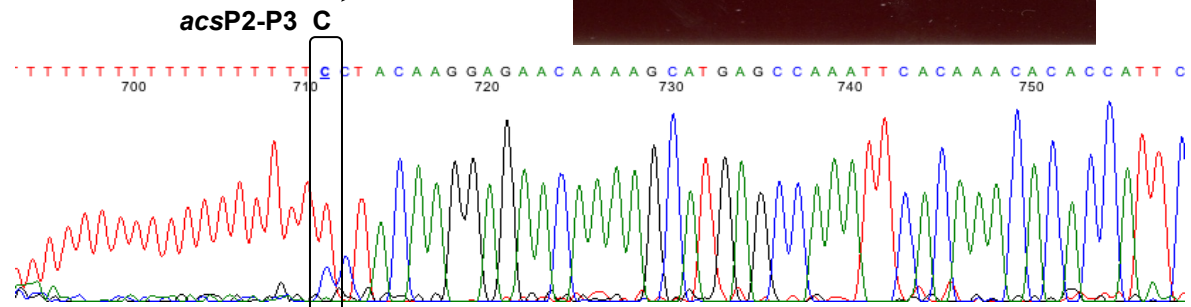
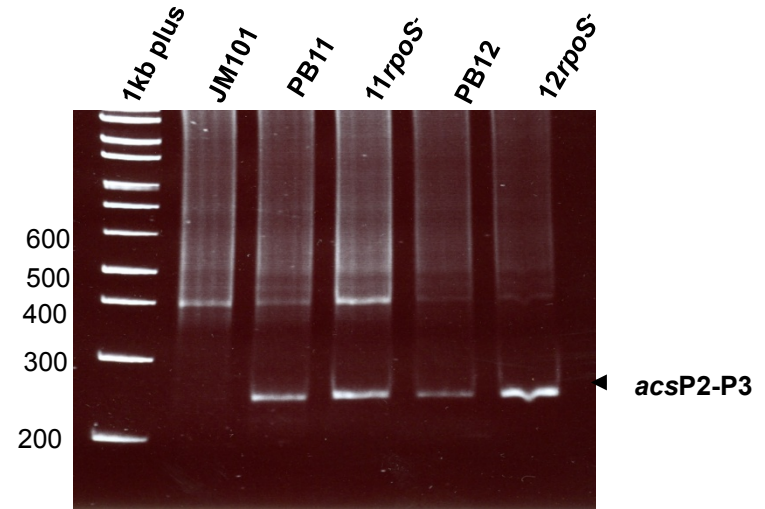
Sequence of the PB11 and PB12mixt sample.



I. *acs* Acetyl-CoA synthase

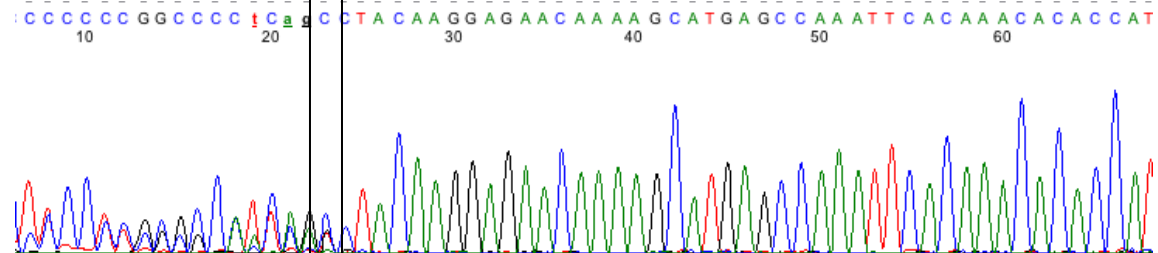
The detected TSS of the *acs* gene is the same as the one previously reported (60,61).

Name: *acsp2*
 +1: 4285414
 Sequence: atactaaacaaaactgccaataccctacattttaacgcttatgccacatattattaacatCctaca



Two different methodologies were utilized for the detection of the TSS.

Sequence of the PB11 sample.



Sequence of the PB12 sample.

<i>acs</i> ORF	-----	ATGAGCCAAATTCACAAACACACCATTCTTGCCA
Genomic seq.	CCTACATTTAACGCTTATGCCACATATTATTAACA	TCTACAAGGAGAAACAAAAGCATGAGCCAAATTCACAAACACACCATTCTTGCCA
PB12	-----	TCCCTCGCCGCAFCAGCCTACAAGGAGAAACAAAAGCATGAGCCAAATTCACAAACACACCATTCTTGCCA
PB11	-----	TTTTTTTTTTTTTTTTTTTTTCTACAAGGAGAAACAAAAGCATGAGCCAAATTCACAAACACACCATTCTTGCCA
ruler	... 450 460 470 480 490 500 510 520 530	

Start codon