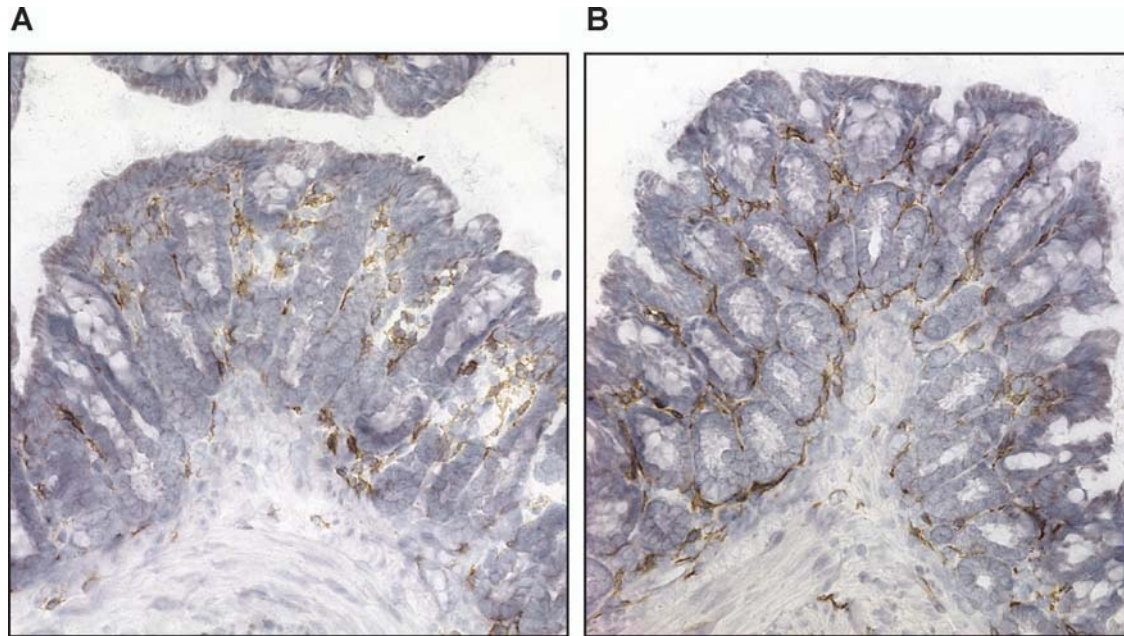


Online Supporting Material



Time points	F4/80	
	Staining pixel/area Fold	Cell number/area Fold
3 months	1.19	1.29***
6 months	1.35*	1.76***

**Supplemental Figure 2.** Representative digital images (200x magnifications) showing the overall distribution of F4/80 immunostained cells in the distal colon of C57Bl/6 mice after 6 months feeding of AIN-76A diet (A) or WD fed (B). (C) Semi-quantitative measurements of colonic lamina propria macrophages by computerized histomorphometry analysis after 6 month feeding of the WD. Data are mean values expressed as fold change compared to controls, n=7. \* Different from control (AIN-76A),  $P < 0.05$ ; \*\*\*  $P < 0.001$