

**Supplemental figure 1:**

**Color Fluorescence Ratio (R/G ratio) of Carcinoma In-Situ**

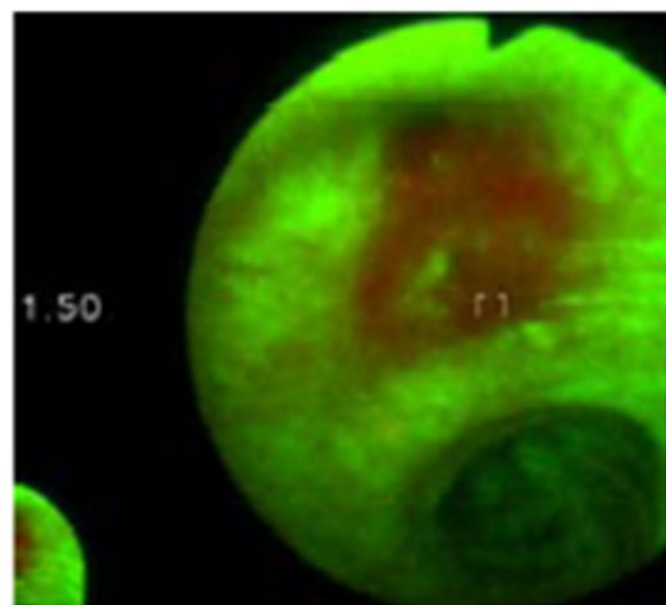
WLB image showed suspicious focal mucosal thickening of LB6.

AF image showed abnormal fluorescence with distinct margin of LB6.

RG ratio of target within the brackets was 1.5, derived by dividing the average red reflectance with green fluorescence signals.



WLB



AF

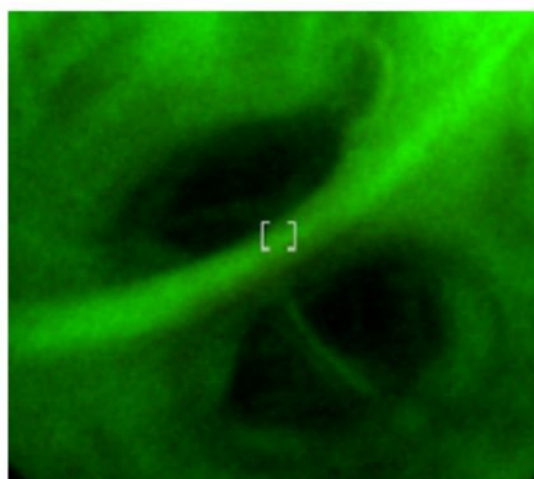
WLB: White light bronchoscopy

AF: Autofluorescence Bronchoscopy

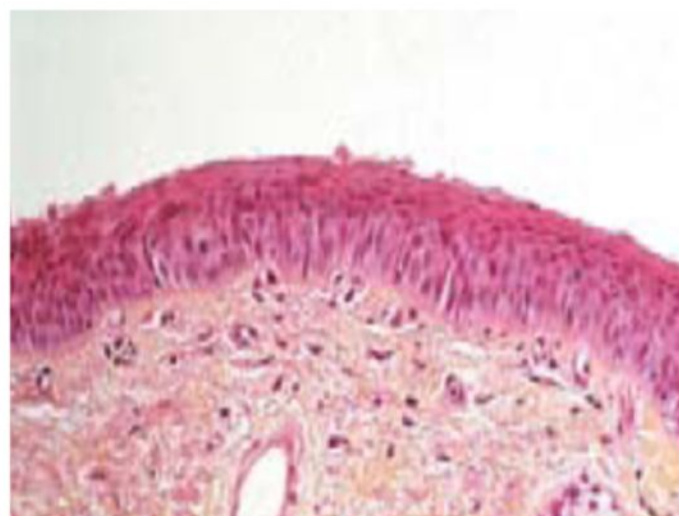
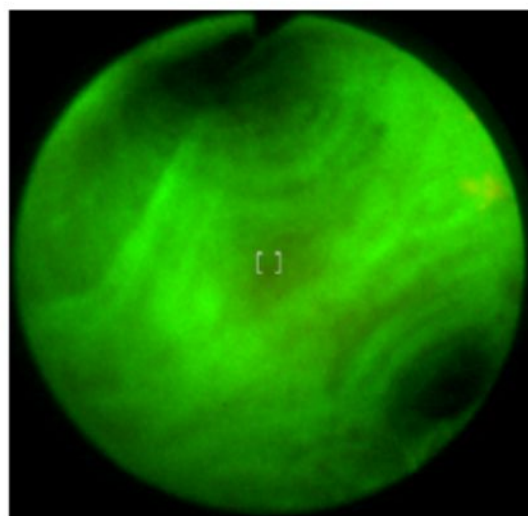
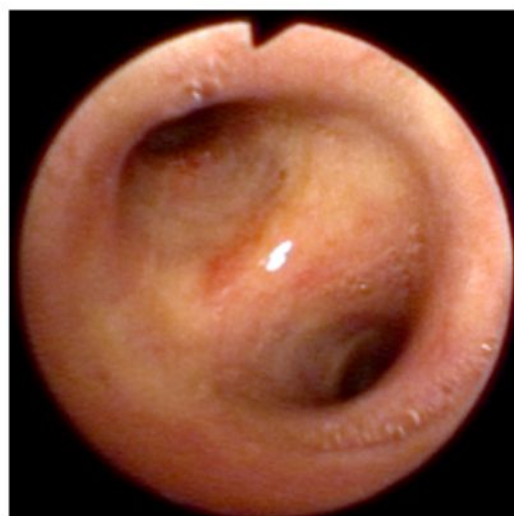
## Supplemental figure 2:

### Visual classification by WL/ AF, R/G ratio correlated with Histology

Class I (normal): Normal histology of middle lobe carina (R/G 0.14)



Class II (abnormal): Mild dysplasia of left upper division bronchus (R/G ratio 0.28)

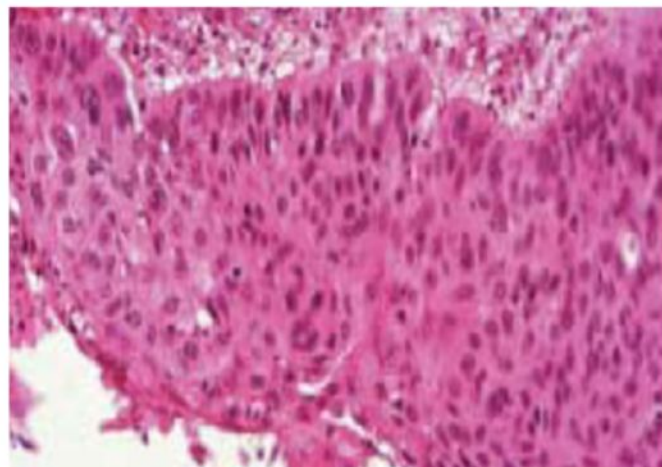
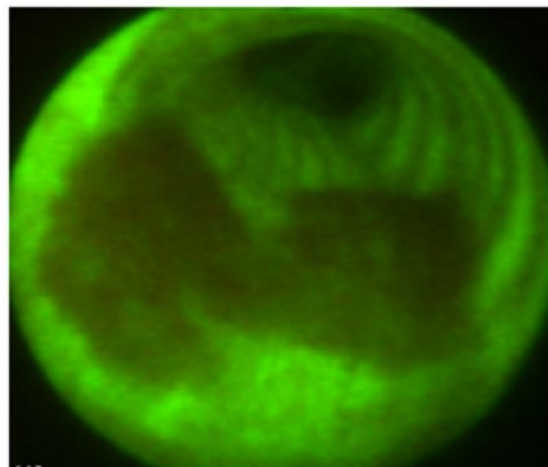




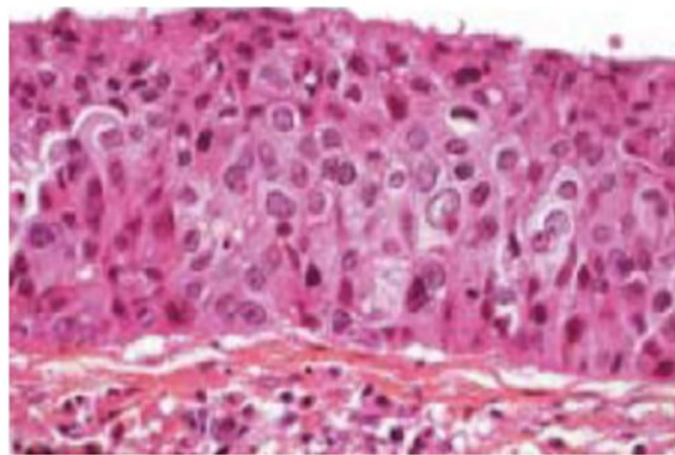
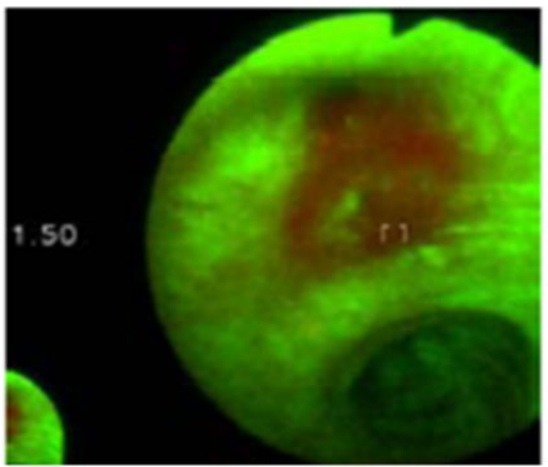
## Supplemental figure 2:

### Visual classification by WL/ AF, R/G ratio correlated with Histology

Class III (suspicious): Severe dysplasia of tracheal wall (R/G ratio 1.16)



Class III (suspicious): Carcinoma in-situ of LB6 (R/G ratio 1.50)



Supplemental figure 3:  
R/G Ratio of Histological Category According to Centre

