

Supplemental Figures

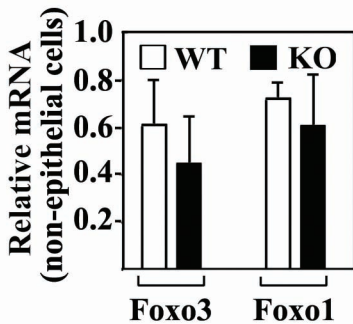
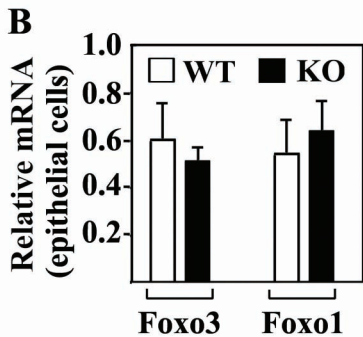
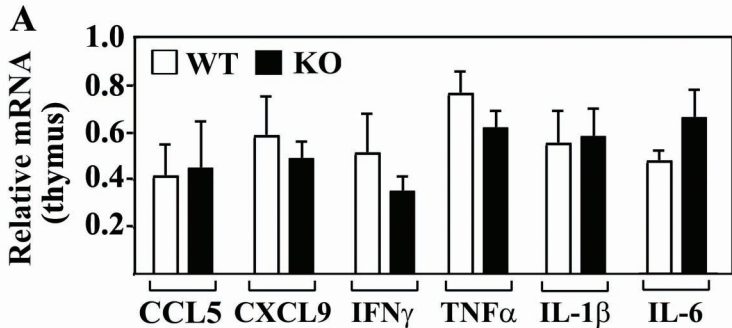
Figure S1. (A) qRT-PCR analysis of RNA transcripts from thymus of WT and *Foxo4* KO mice. (B) Relative mRNA levels of FoxO family members in epithelial cell (left panel) and non-epithelial cell fractions (right panel) of colonic mucosa from WT and *Foxo4*-null mice.

Figure S2. IHC staining of colonic CD4⁺ cells (dark brown) along the surface-crypt axis of WT and *Foxo4*-KO mice.

Figure S3. Foxo4 transcripts were detected by in situ hybridization in mouse colonic tissue sections using sense (left panel) and anti-sense (right panel) Dig-labeled oligonucleotide probes. Foxo4 is expressed in the epithelial cells (upper panel) and colonic lymphoid follicles containing T and B cells (lower panel).

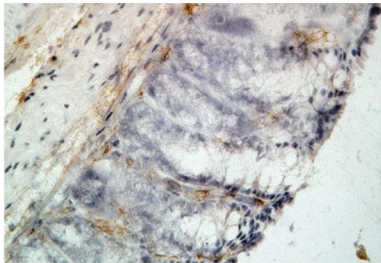
Figure S4. TUNEL staining of apoptotic cells (red, arrows) in colonic epithelium of WT and *Foxo4*-KO mice. Nuclei were stained with DAPI (blue).

Figure S5. (A) Relative mRNA of Foxo4, ZO-1, and claudin-1 in intestinal epithelial cell line HT-29 transfected with either non-specific control siRNA (NSC) or Foxo4 specific siRNAs (Foxo4-1 or Foxo4-2) ($n = 3 \pm \text{SEM}$, *, $p < 0.05$). (B) Transmission electron micrographs of colons of WT and *Foxo4*-KO mice.

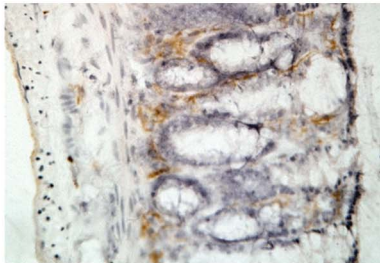


Supplemental Figure S1

anti-CD4



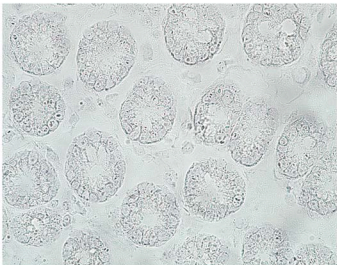
WT



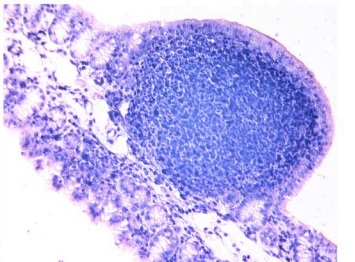
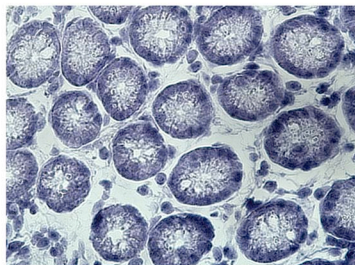
KO

supplement Figure S2

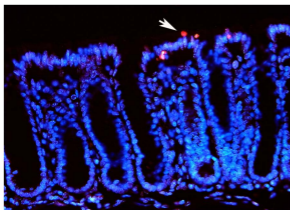
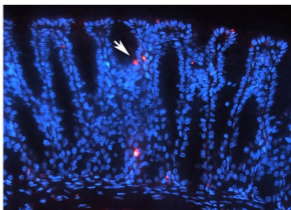
Sense



Anti-sense

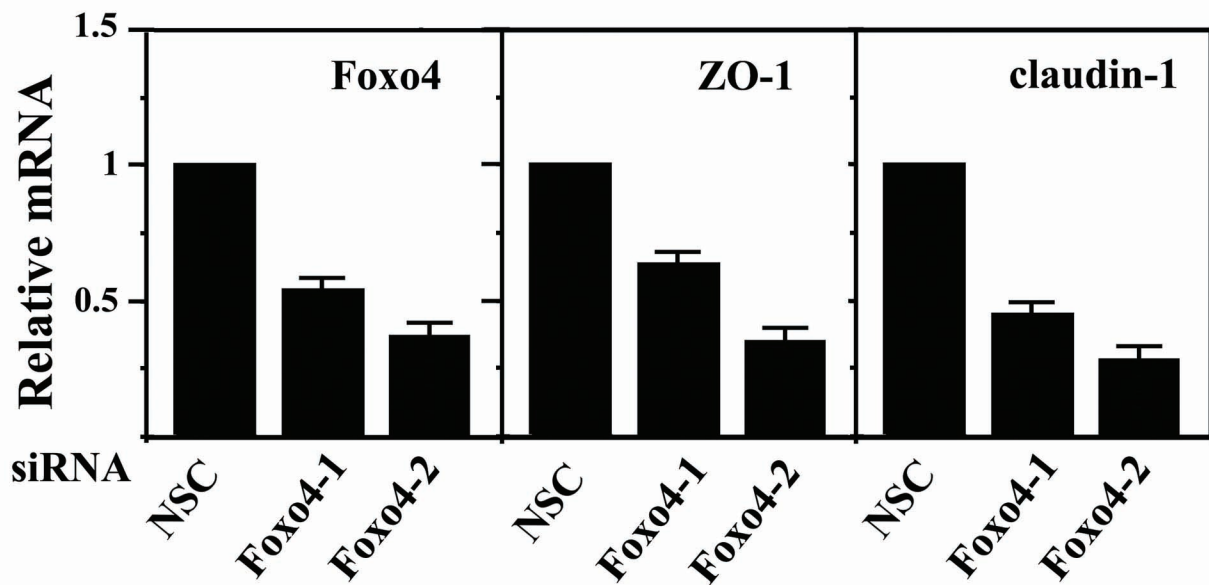
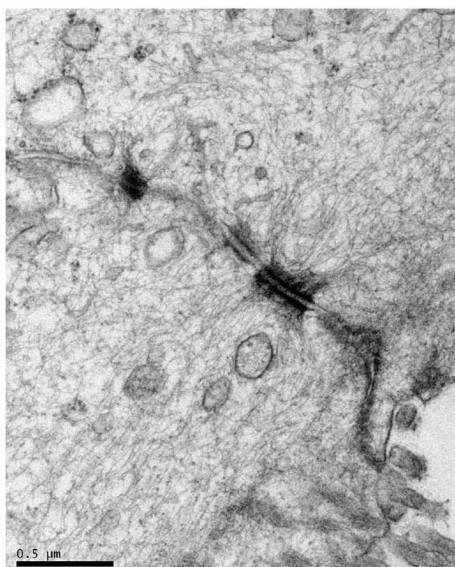
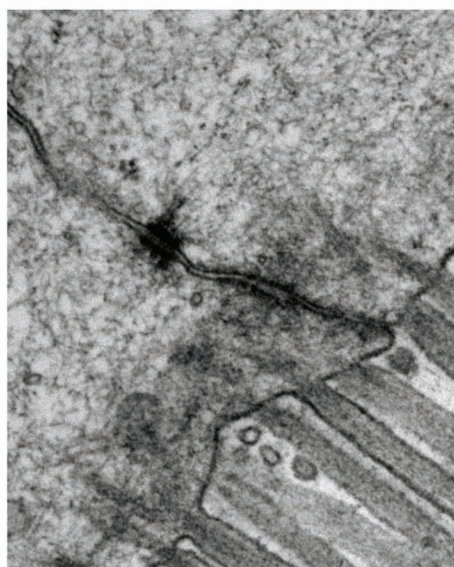


Supplemental Figure S3

WT**KO**

Genotype	WT (n=5)	KO (n=5)
(mean\pmSD)%	0.80 \pm 0.16	1.09 \pm 0.18

Supplemental Figure S4

A**B****WT****KO****Supplemental Figure S5**