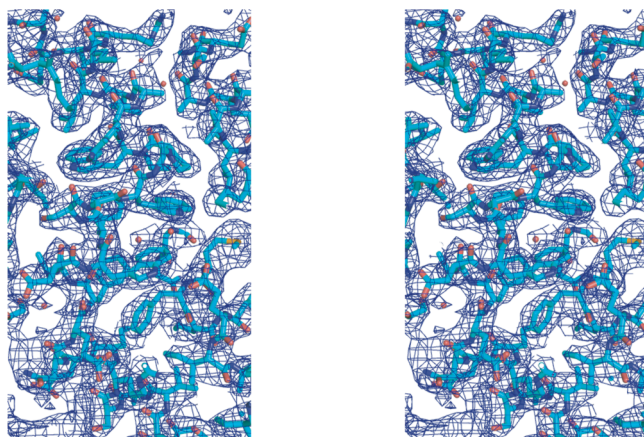
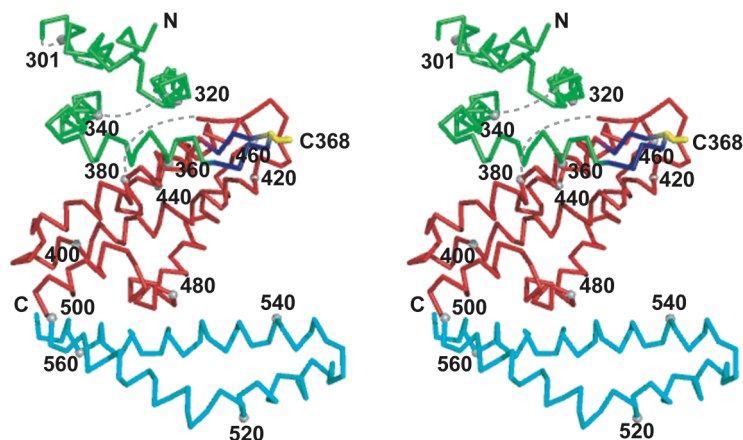


a.



b.



Supplementary Figure 1: IpaH-CTD structure determination. **(a)** Stereo view of the experimental electron density map generated using density-modified SAD phases from autoSHARP³⁸, contoured at 1σ . A portion of the final model displayed as a stick representation in a region centred around helix α 10 of molecule C is also shown, demonstrating the fit of the electron density. **(b)** Stereo ribbon view of the tertiary structure of the IpaH C-terminal domain (molecule A). The N-, middle and C-terminal lobes are colored green, red and blue respectively and disordered regions are represented by a grey dash (**Fig. 4c**). The position of the $C\alpha$ of residue 301, followed by every 20th residue beginning with residue 320 is denoted with a grey ball and labeled.