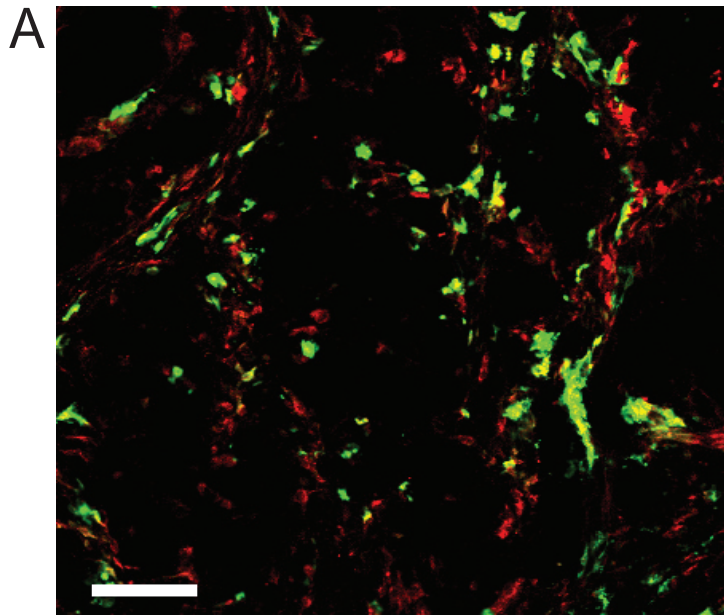
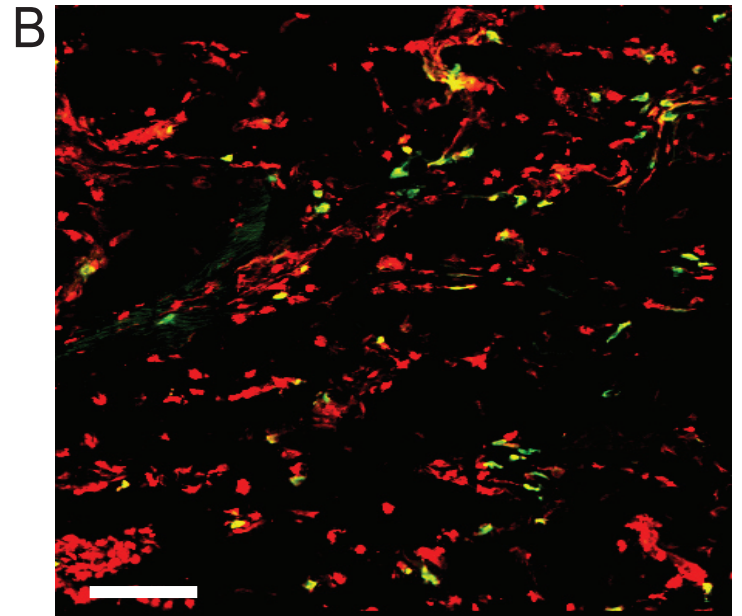


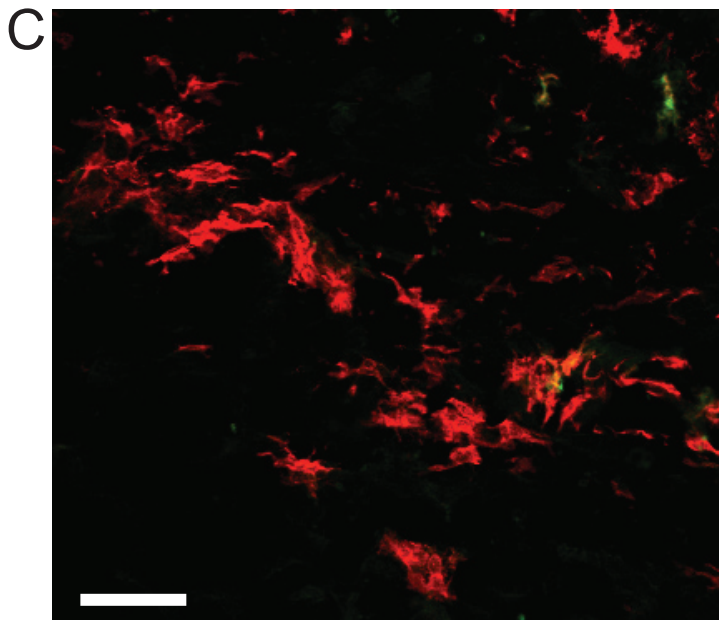
[F] Supplemental Text and Figures
Supplemental Figure 1



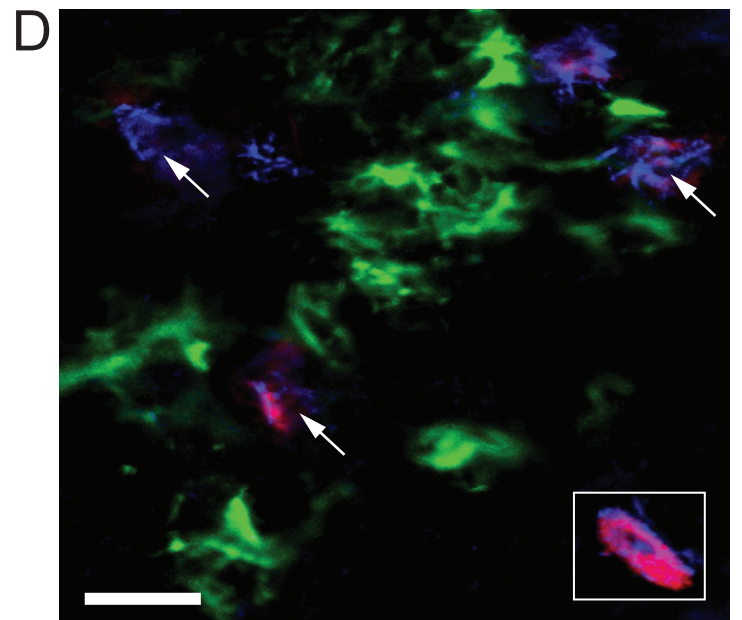
MHC Class II CD11c



MHC Class II CD11b



MHC Class II F4/80



MHC Class II Kit Avidin

Supplemental Figure 2

FP-R1 = Monocyte derived DCs

FP-R2 = CD11b^{low} DCsFP-R3 = CD11c^{hi} DCsFP-R4 = CD11c^{mid} DCs

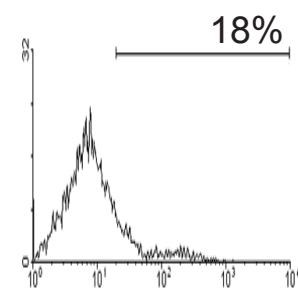
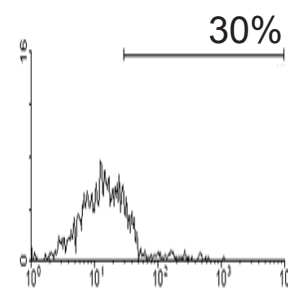
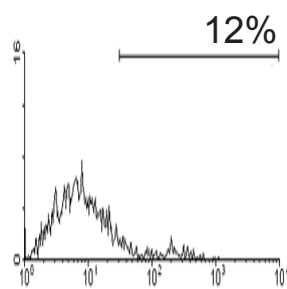
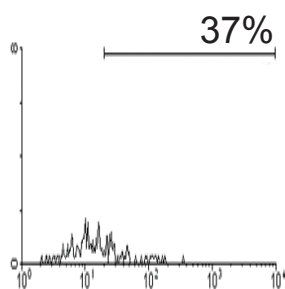
FP-R1

FP-R2

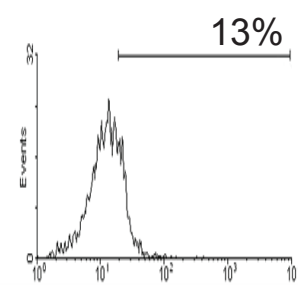
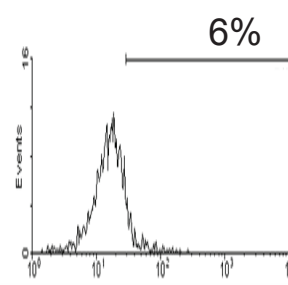
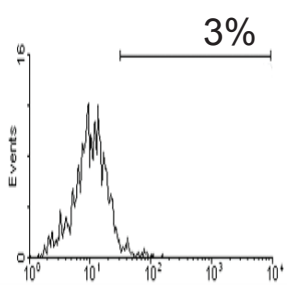
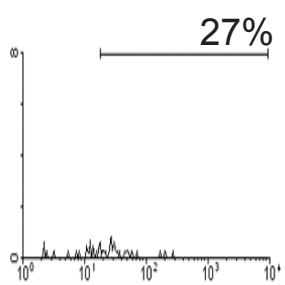
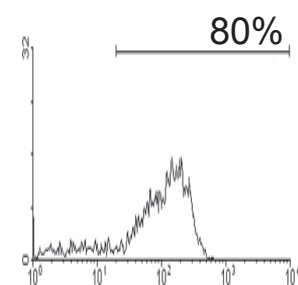
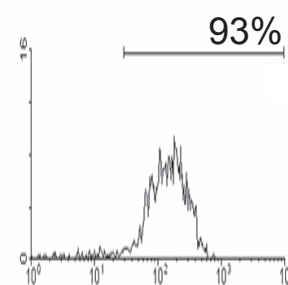
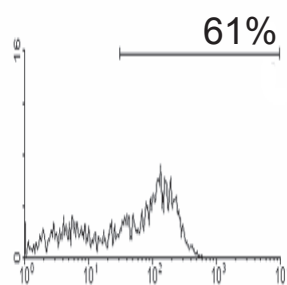
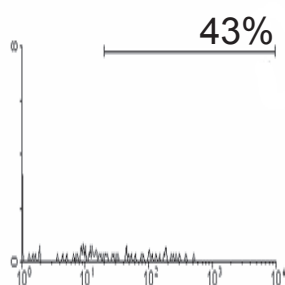
FP-R3

FP-R4

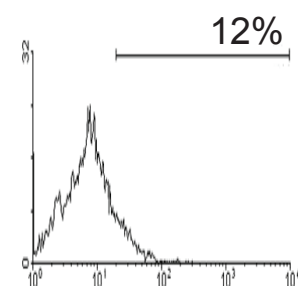
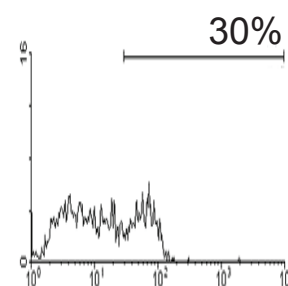
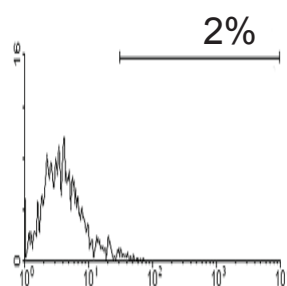
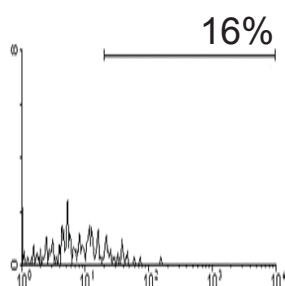
CD40



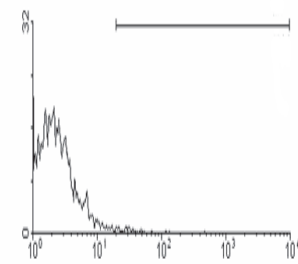
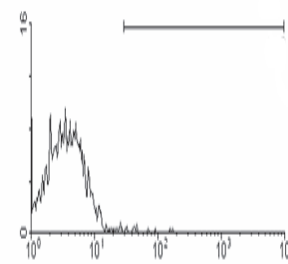
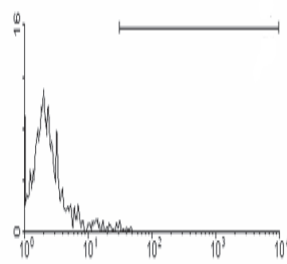
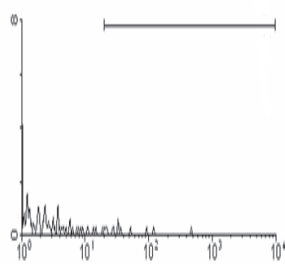
CD86

MHC
Class II

F4/80



IMC

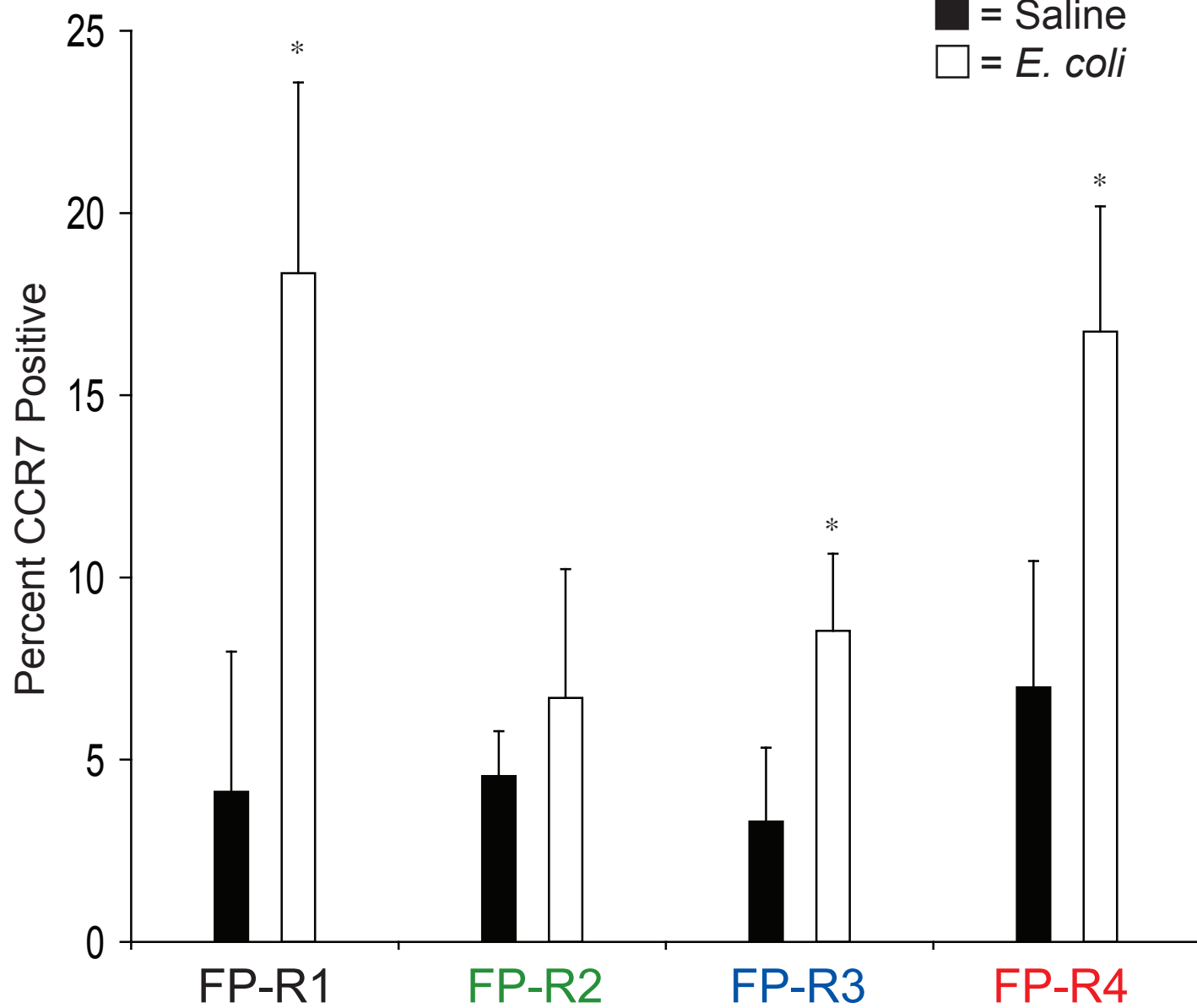


Supplemental Figure 3

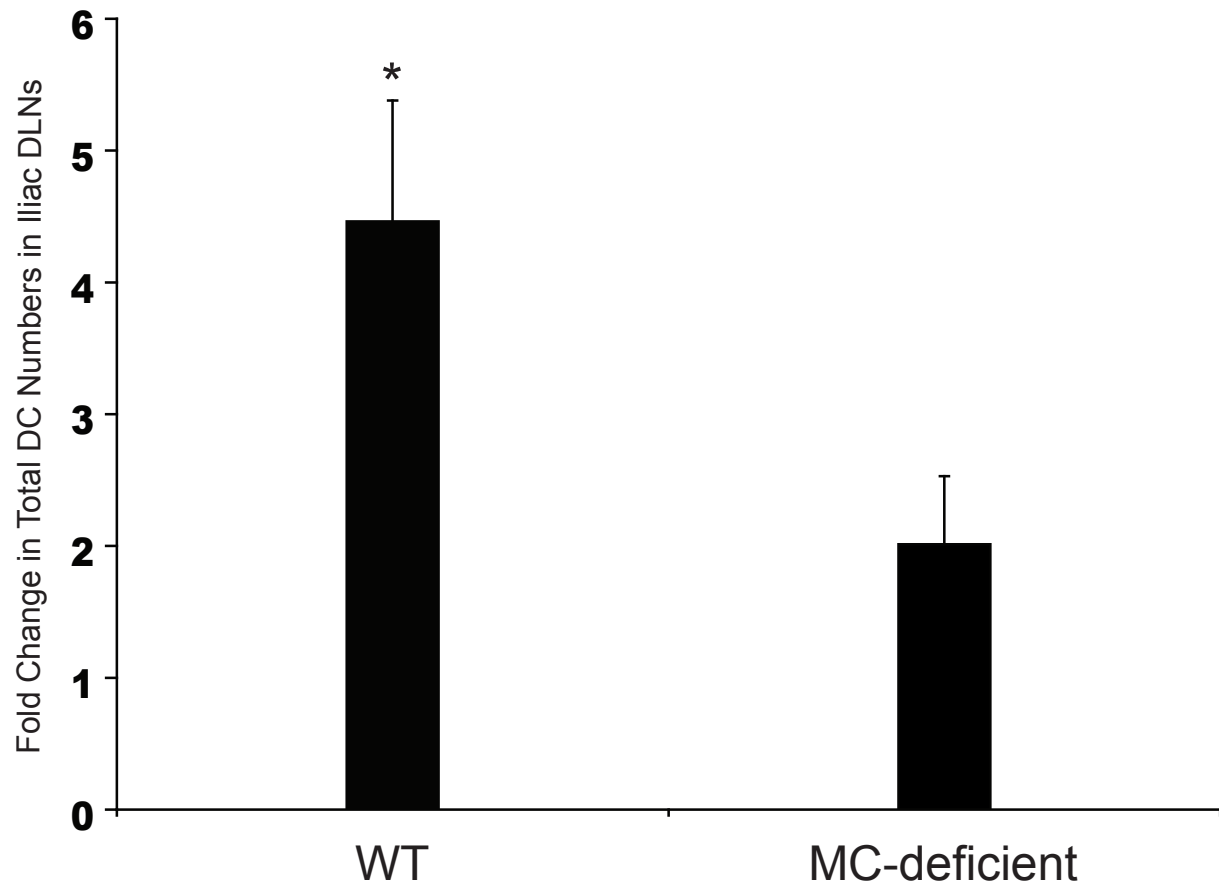
FP-R1 = Monocyte derived DCs

FP-R2 = CD11b^{low} DCsFP-R3 = CD11c^{hi} DCsFP-R4 = CD11c^{mid} DCs

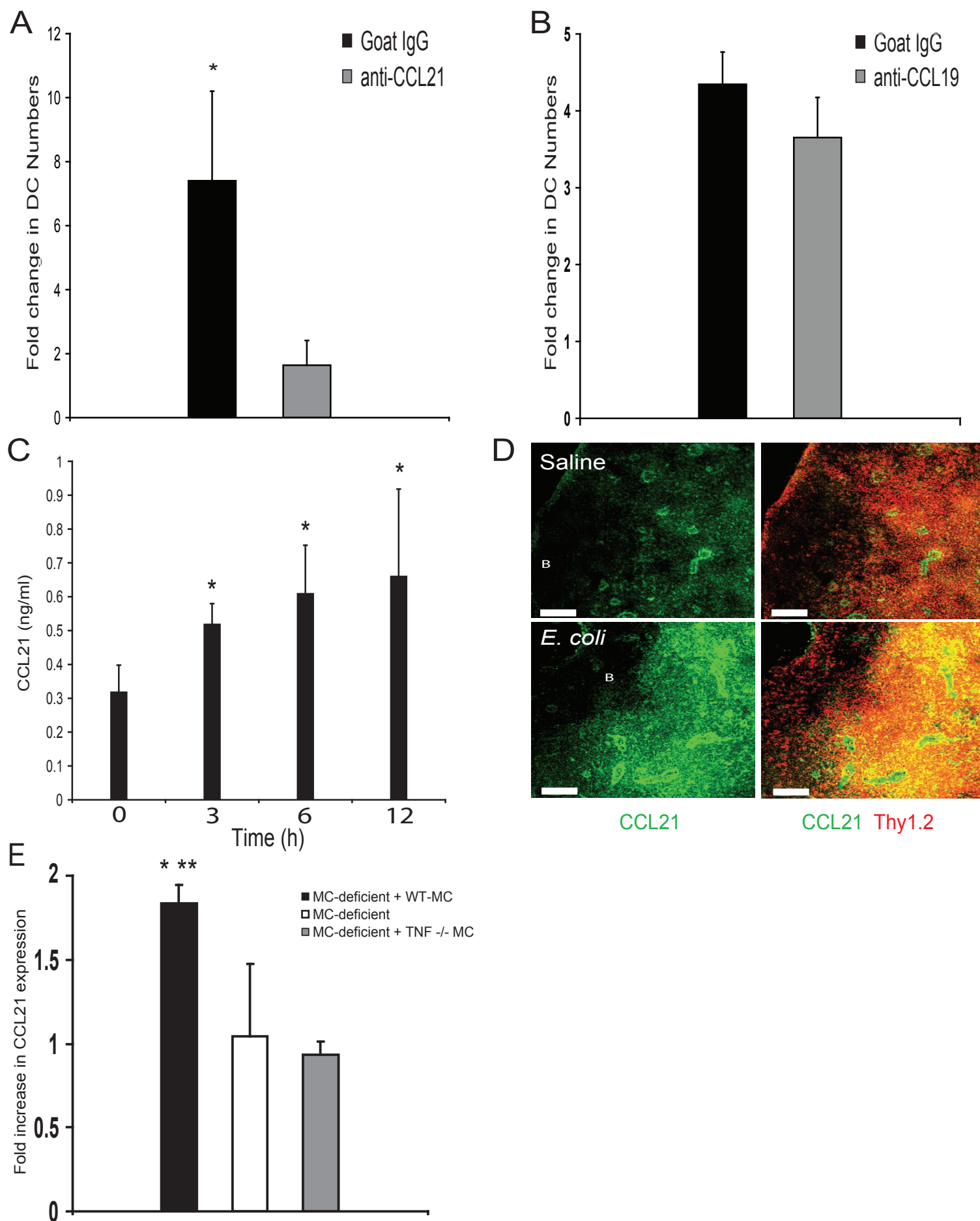
■ = Saline

□ = *E. coli*

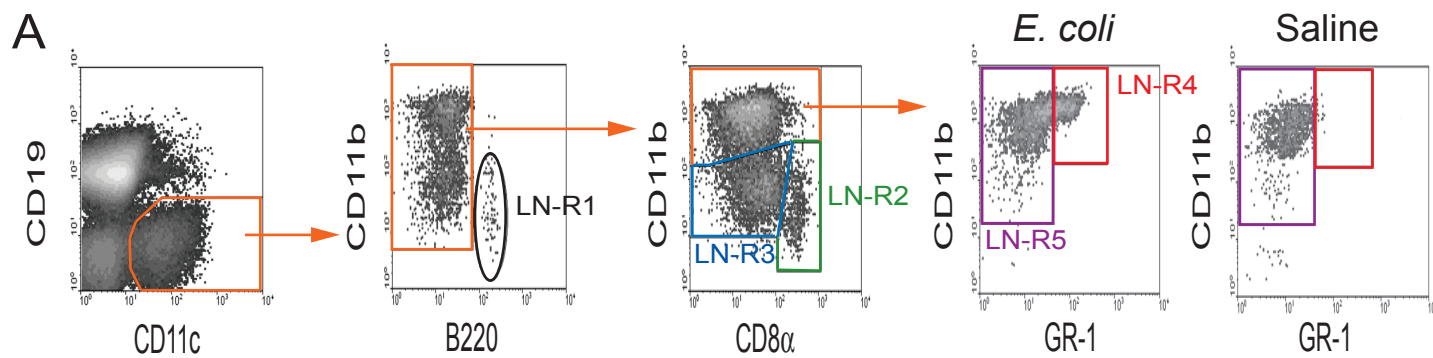
Supplemental Figure 4



Supplemental Figure 5

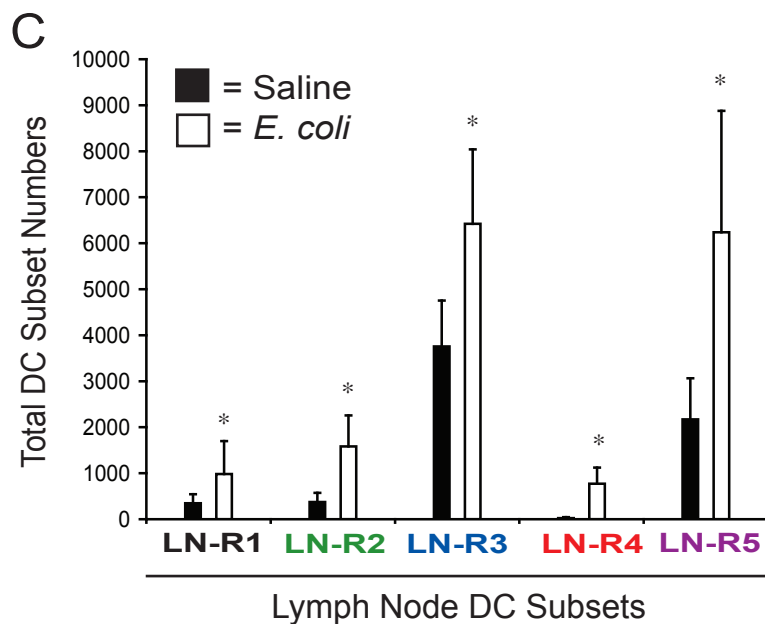


Supplemental Figure 6

**B**

DC Subsets	Markers	Subset	Total Numbers: Saline	Percent Total DC: Saline	Total Numbers: <i>E. coli</i>	Percent Total DC: <i>E. coli</i>	p Value*
Plasmacytoid DCs	CD11c ⁺ CD11b ⁻ B220 ⁺ (Asselin-Paturel et al., 2001; Nakano et al., 2001)	LN-R1	347±197	5.5%	982±716	5.8%	0.04
CD8 α ⁺ DCs	CD11c ⁺ CD11b ⁻ B220 ⁻ CD8 α ⁺ (Vremec and Shortman, 1997)	LN-R2	374±198	5.4%	1582±674	9.8%	0.0004
Langerhans cells/dermal DCs	CD11c ⁺ CD11b ^{mid} B220 ⁰ CD8 α ⁻ (Henri et al., 2001; Iezzi et al., 2006; Kamath et al., 2002; Leon et al., 2007)	LN-R3	3756±996	56.9%	6424±1616	41.6%	0.0019
Monocyte-derived DCs	CD11c ⁺ CD11b ^{hi} B220 ⁻ CD8 α ⁻ GR1 ⁺ (Leon et al., 2007)	LN-R4	23±21	.3%	771±350	4.8%	0.00007
CD11b ^{hi}	CD11c ⁺ CD11b ^{hi} B220 ⁻ CD8 α ⁻ GR1 ⁺	LN-R5	2170±893	31.9%	6238±2640	38.1%	0.0017

* p values comparing total numbers within each DC subset from saline and *E. coli* challenged samples using Student's T-test.



Supplemental Figure 7

